

Kalihi Office with Flex/Warehouse Space

Promotional Rate! Expires July 31, 2023

2222 Kamehameha Hwy
Honolulu, HI 96819



Property Details

CBRE, Inc. is pleased to offer the opportunity to Lease an Office with access to flex/warehouse space. The property is located on Kamehameha Hwy (right past Dillingham Blvd) adjacent to Nimitz and Freeway access. 2.9 miles from Downtown Honolulu (CBD) and 2.7 miles from Daniel K. Inouye International Airport.

- + Address: 2222 Kamehameha Hwy, Honolulu, HI 96819
- + Gross Rent: **Promotional Rate: \$4,000.00/month**
- + Size: Office - 2,041 SF

Office Features

- + Central A/C
- + Reception desk
- + Conference room
- + 5 private offices
- + Bullpen area
- + Restroom and shower facility
- + Combined with warehouse

Warehouse/Yard/Storage/ Workshop Capability*

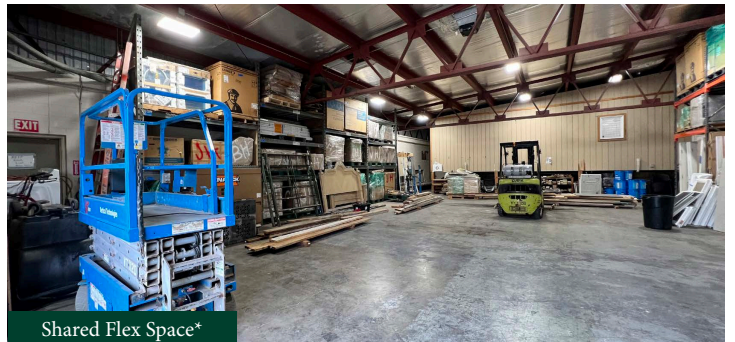
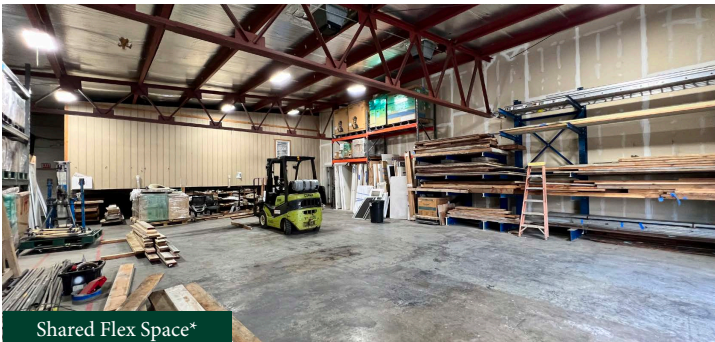
- + Shared secure storage*
- + Access to power*
- + Flexible workshop/fabrication area*
- + Fenced yard area available*

*Can be included for additional fee

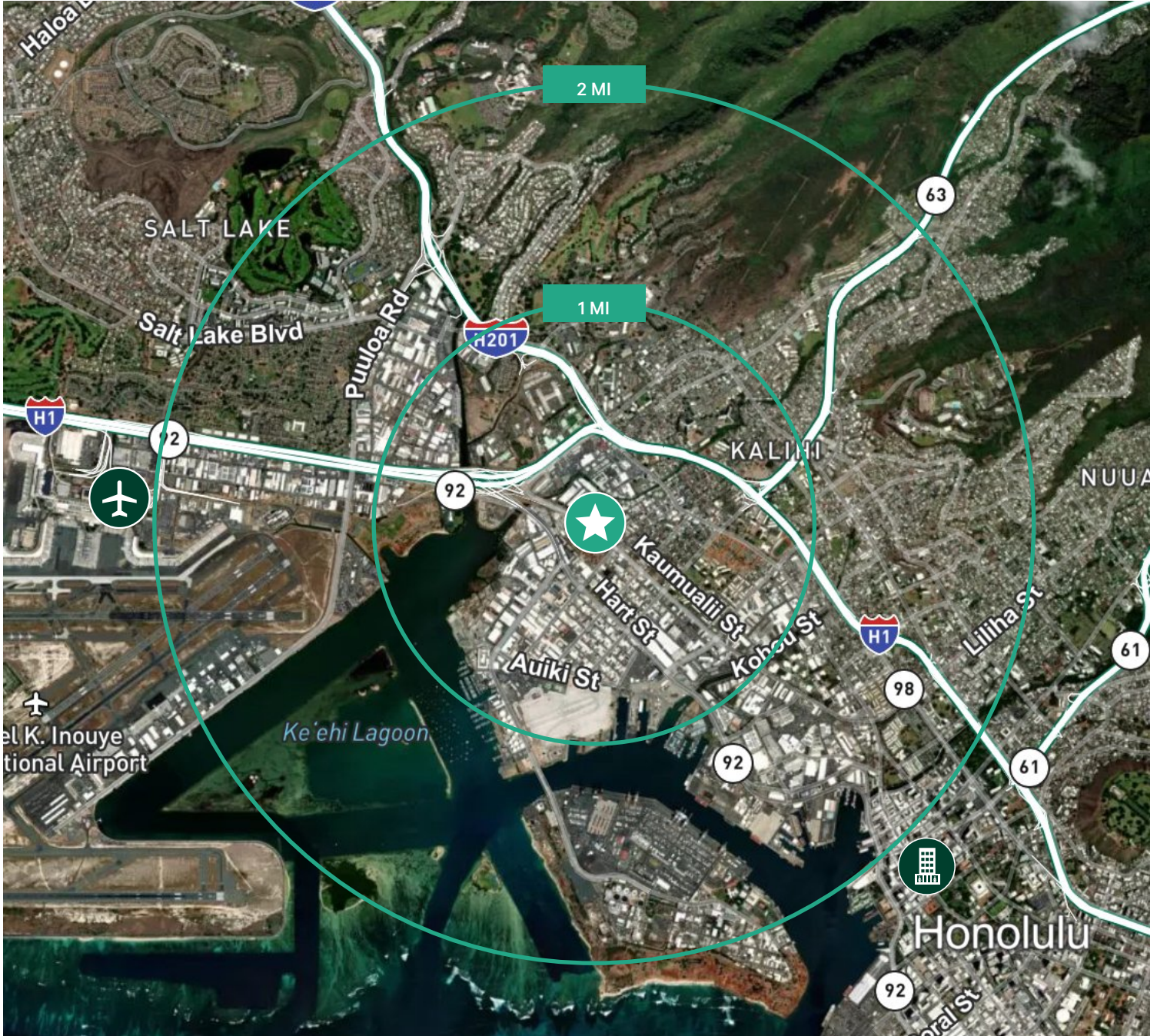
Office



Warehouse/Flex/Yard*



*Can be included for additional fee



Contact Us

Keane Omaye-Backman

Lic. RS-76415

Senior Associate

+1 808 292 6861

keane.backman@cbre.com

Andrew D. Reenders

Lic. RB-21784

Vice President

+1 808 541 5146

andrew.reenders@cbre.com

Huaiyu "Eric" Zheng

Lic. RS-85703

Associate

+1 808 541 5113

eric.zheng2@cbre.com

© 2022 CBRE, Inc. All rights reserved. This information has been obtained from sources believed reliable, but has not been verified for accuracy or completeness. You should conduct a careful, independent investigation of the property and verify all information. Any reliance on this information is solely at your own risk. CBRE and the CBRE logo are service marks of CBRE, Inc. All other marks displayed on this document are the property of their respective owners, and the use of such logos does not imply any affiliation with or endorsement of CBRE. Photos herein are the property of their respective owners. Use of these images without the express written consent of the owner is prohibited.