

FOR LEASE

**STRATEGIC INDUSTRIAL
YARD OPPORTUNITY IN A
HIGH-DEMAND CORRIDOR**

MIAMI, FL 33147
3600 NW 95 ST
LOGISTICS HUB

\$45K MONTH

LEASE PRICE

63,811 SF

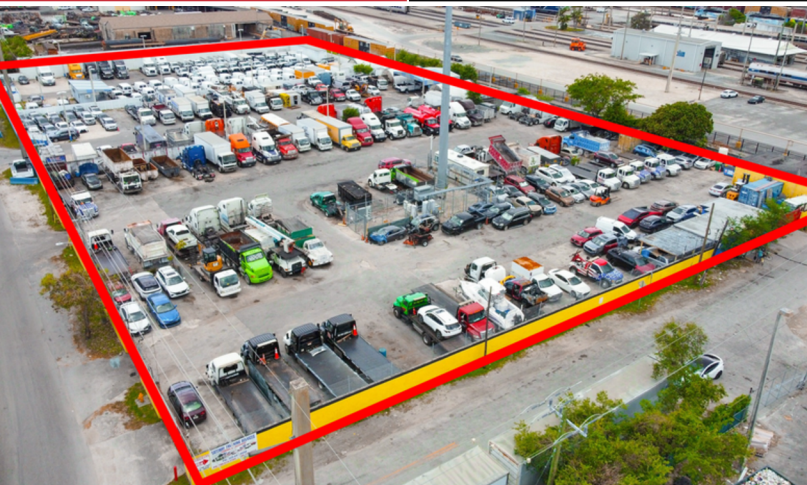
AVAILABLE SIZE

STORAGE

LOADING

7600 INT

ZONING



LOCATION ADVANTAGES

- Near Palmetto Expressway (SR 826)
- Easy access to Interstate 95
- Central Miami-Dade location
- Strong industrial user base nearby
- Efficient regional connectivity

FAUSTO COMMERCIAL PRESENTS

Prime industrial outdoor storage opportunity in a high-demand Miami-Dade corridor, ideal for truck parking, towing operations, fleet management, equipment storage, and other industrial or auto-related uses. The property offers a functional layout with strong usability for large vehicles, secure operations, and everyday business efficiency. Surrounded by active industrial users and ongoing growth, this is a strategic opportunity with immediate utility and long-term upside.

PROPERTY HIGHLIGHTS

- Functional IOS configuration
- Ideal for truck and fleet users
- Strong vehicle maneuverability
- Suitable for towing operations
- Equipment and outdoor storage potential
- Secure operational setup

EXCLUSIVELY LISTED BY



ERNESTO DIAZ

Commercial Real Estate Advisor

+1 786.499.4912

ediaz@faustocommercial.com



MARKOS BERTOLOTTI

Commercial Real Estate Advisor

+1 305.632.2057

mb@faustocommercial.com

