



SPERRY

COMMERCIAL REALTY
ASSOCIATES

THE RIGHT IMAGE
FAMILY
HAIR STYLES

FOR SALE

911 CENTRAL AVE
DOVER, NH 03820



Dave Tanguay

SENIOR ASSOCIATE

603.674.1617

dave.tanguay@sperrycga.com

NH #077077

Property Summary



PROPERTY DESCRIPTION

This 1,470 square foot building is now available for purchase in a prime location on Central Avenue in Dover, NH. The property is listed for \$749,000 and offers excellent visibility in a high-traffic area. Currently built out as a full-service hair salon, the space includes existing salon chairs, sinks, and plumbing already in place, allowing a salon operator to move in and begin operating with minimal setup. The space was also previously used for tanning services, offering additional flexibility for similar personal care or wellness uses.

The property may also be suitable for a variety of other retail or commercial uses. Located only 0.5 miles from NH Route 16, the building offers convenient accessibility along with ample on-site parking. Additional features include pylon signage, two curb cuts, and approximately 20± parking spaces.

For more information or to schedule a showing, please contact us today.

OFFERING SUMMARY

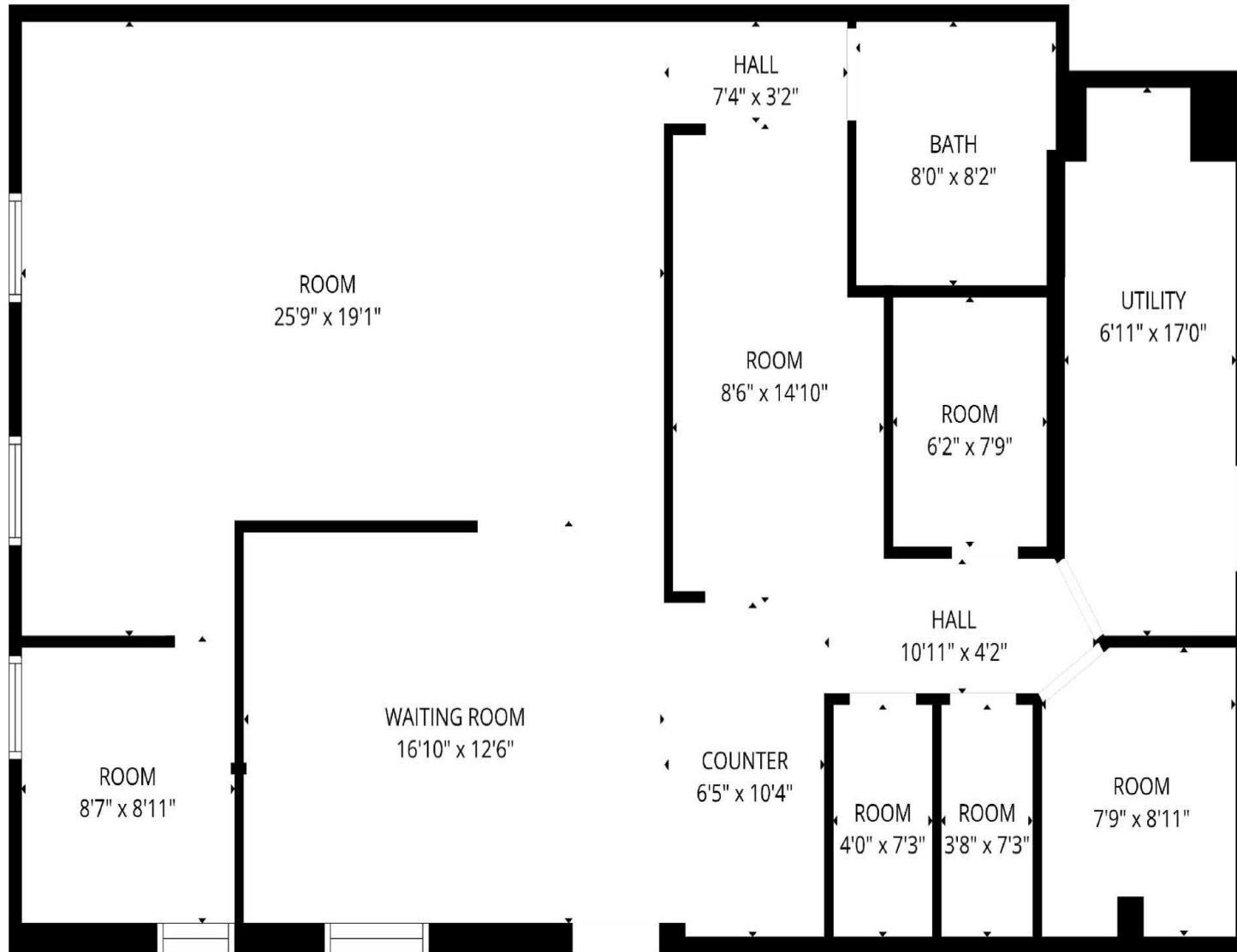
Sale Price:	\$749,000
Number of Units:	1
Building Size:	1,470 SF

DEMOGRAPHICS	1 MILE	3 MILES	5 MILES
Total Households	1,738	14,919	25,574
Total Population	4,040	32,826	57,579
Average HH Income	\$109,925	\$103,048	\$106,740

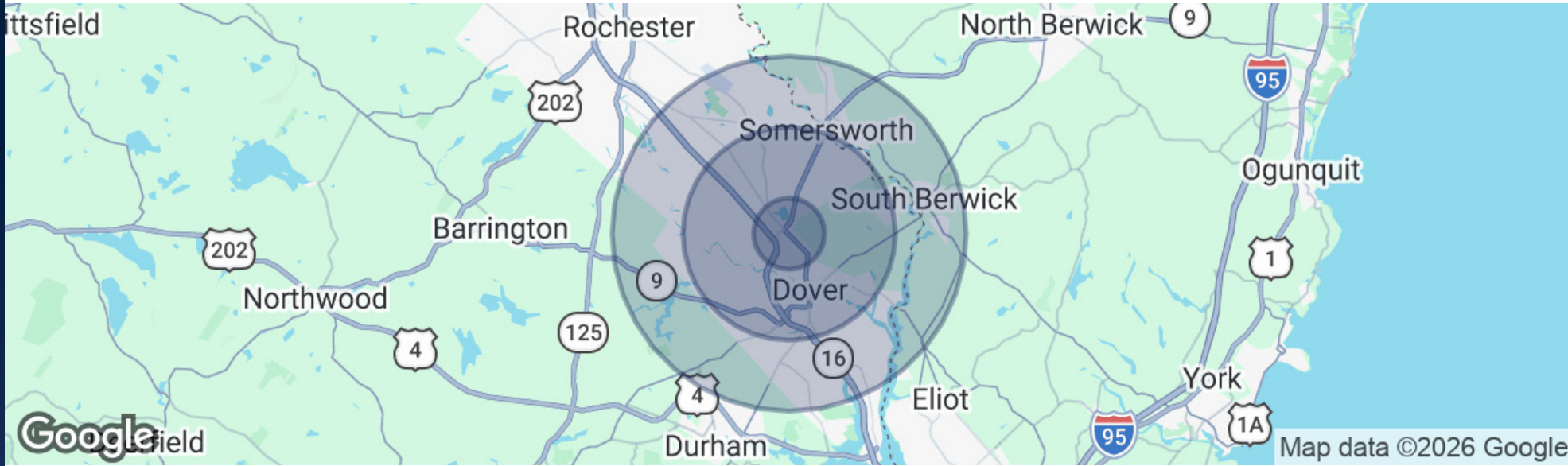
Interior Photos



Floor Plan



Demographics Map & Report



POPULATION

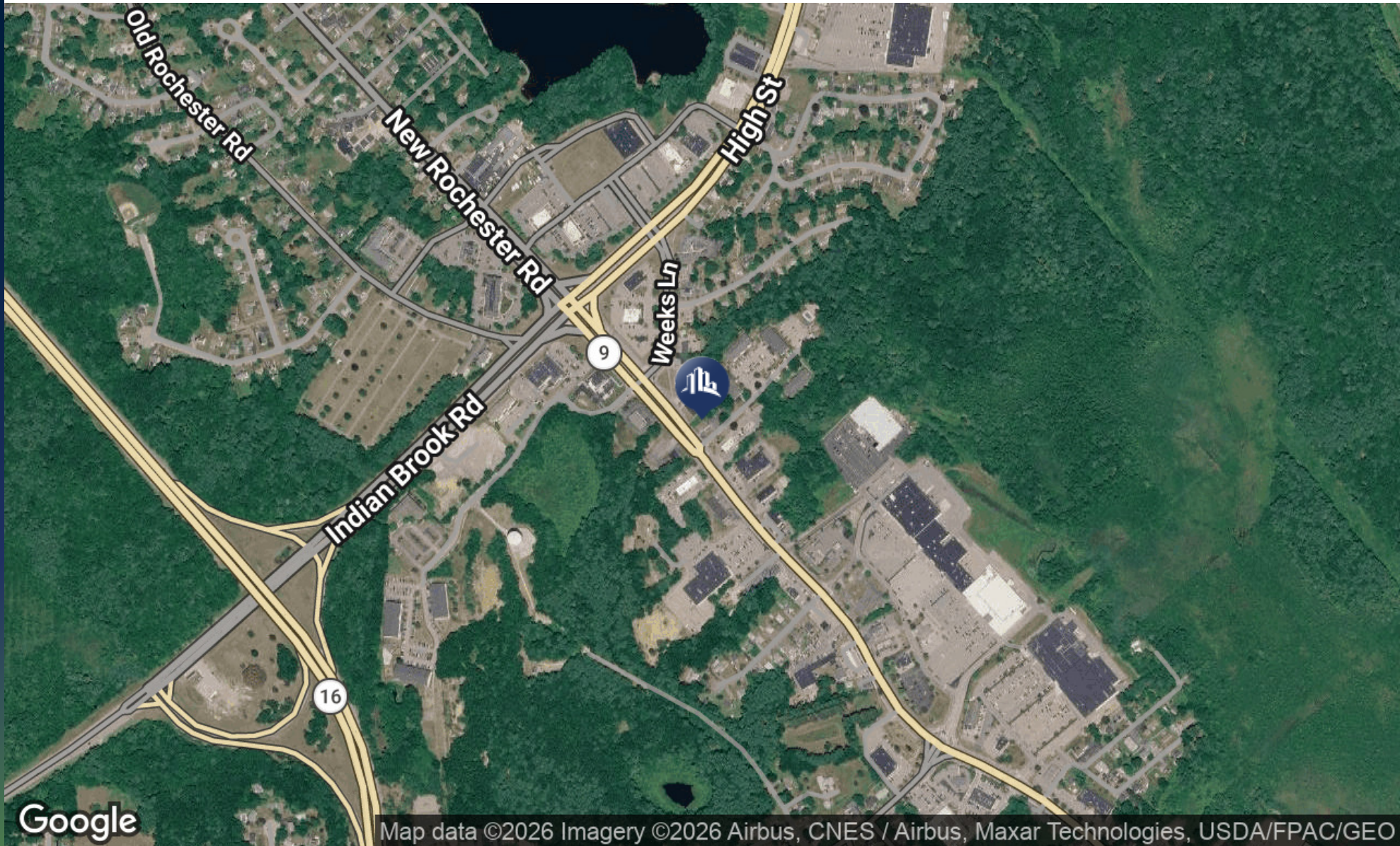
	1 MILE	3 MILES	5 MILES
Total Population	4,040	32,826	57,579
Average Age	36.7	37.5	40.0
Average Age (Male)	34.7	37.3	39.8
Average Age (Female)	38.2	37.8	41.0

HOUSEHOLDS & INCOME

	1 MILE	3 MILES	5 MILES
Total Households	1,738	14,919	25,574
# of Persons per HH	2.3	2.2	2.3
Average HH Income	\$109,925	\$103,048	\$106,740
Average House Value	\$355,122	\$376,710	\$370,136

2023 American Community Survey (ACS)

Location Map



Map data ©2026 Imagery ©2026 Airbus, CNES / Airbus, Maxar Technologies, USDA/FPAC/GEO

SPERRY - COMMERCIAL REALTY ASSOCIATES | 169 SOUTH RIVER RD | UNIT 1 | BEDFORD, NH 03110

We obtained the information above from sources we believe to be reliable. However, we have not verified its accuracy and make no guarantee, warranty or representation about it. It is submitted subject to the possibility of errors, omissions, change of price, rental or other conditions, prior sale, lease or financing, or withdrawal without notice. We include projections, opinions, assumptions or estimates for example only, and they may not represent current or future performance of the property. You and your tax and legal advisors should conduct your own investigation of the property and transaction.

Retailer Map



Advisor Bio



DAVE TANGUAY

Senior Associate

dave.tanguay@thecreassociates.com

Direct: 603.674.1617

NH #077077

PROFESSIONAL BACKGROUND

Dave Tanguay is a Senior Associate at SPERRY - Commercial Realty Associates, licensed in 2021 and focused on delivering full-service commercial real estate solutions. He supports clients across all aspects of the industry—including sales, leasing, investment analysis, and asset management—for a variety of property types such as industrial, office, retail, land development, and Net Leased Investments.

With a prior decade of experience in business and office supply sales, Dave brings a strong foundation in strategic communication, negotiation, and client service. He's recognized for his ability to manage complex transactions, provide data-driven insights, and build lasting relationships through responsive, results-oriented service.

Dave is actively involved in New Hampshire's commercial real estate community, serving as Secretary and Board Member for NHCIBOR (New Hampshire Commercial Investment Board of Realtors), where he contributes to industry growth and professional standards.

Commercial Realty Associates
169 South River Rd Unit 1
Bedford, NH 03110