

NOW AVAILABLE FOR LEASE

SALE PRICE REDUCED
\$4,256,000 (\$97.70/SF)



±43,560 SF

LAND FOR SALE/LEASE

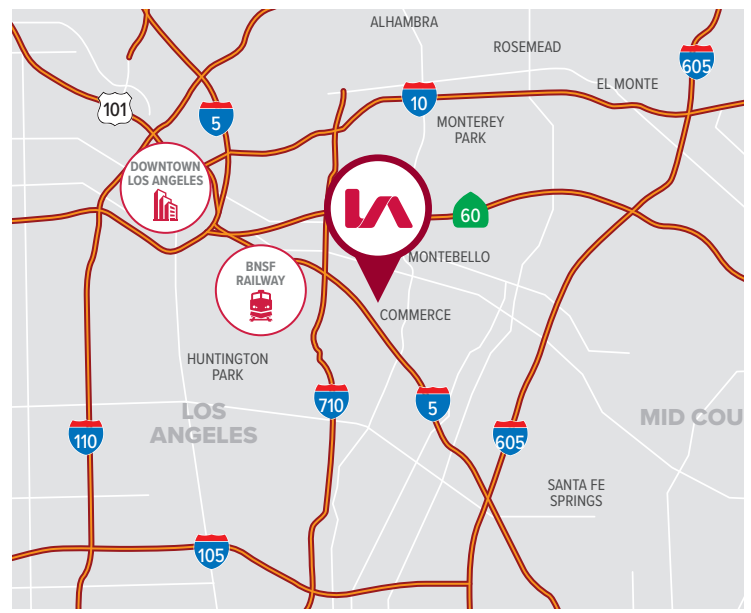
OF M2 ZONED INDUSTRIAL LAND

**Picture is Edited to Show Cleared Site Potential.*

2041 DAVIE AVE, COMMERCE, CA 90040

PROPERTY HIGHLIGHTS

- Build-To-Suit Opportunity
- Redevelopment Land Opportunity in Commerce
- Zoned Commerce M2 (Heavy Industrial)
- Rare Infill Location - Square Parcel Shape
- Corner Lot with Excellent Access & Visibility
- Ideal for Redevelopment - Utilities to Site
- Bldg. Damaged in Fire - Demo Required
- Contact Broker - Sold "As-Is" Where-Is"



SALE PRICE	\$4,256,000 (\$97.70/SF)
LEASE RATE	\$32,670/Mo GRS (\$0.75/SF GRS)

FOR MORE INFORMATION, PLEASE CONTACT

LOCAL EXPERTISE. INTERNATIONAL REACH. WORLD CLASS.



TONY NAPLES
Senior Vice President | LIC NO 01811344
tnaples@lee-associates.com
818.395.4373



MATTISON BEHR
Senior Associate | LIC NO 02091054
mbehr@lee-associates.com
818.434.9116

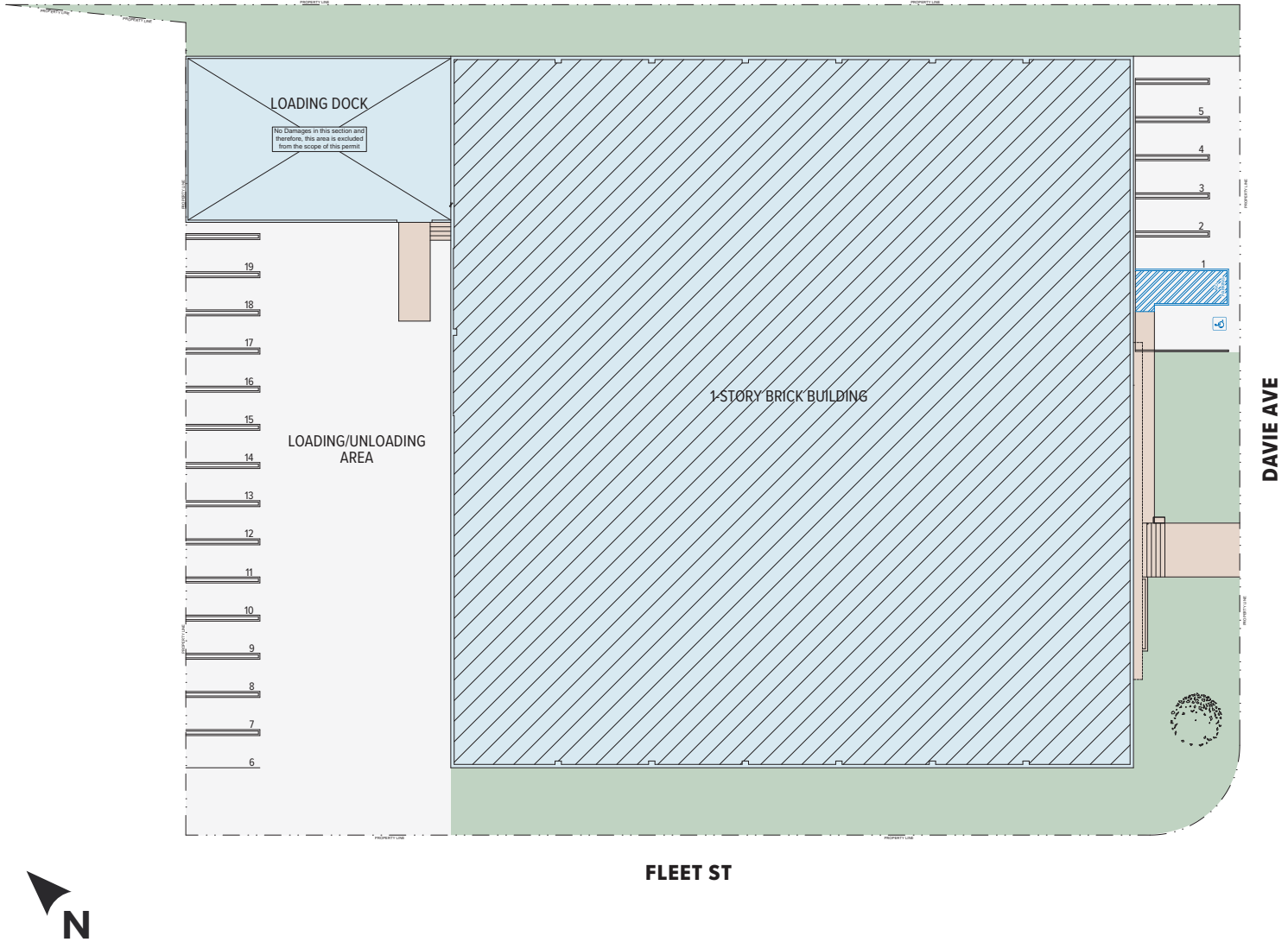
The information has been furnished from sources which we deem reliable, but for which we assume no liability. Any projections, opinions, assumptions or estimates used are for example only and do not represent the current or future performance of the property. Buyers should consult with their independent advisors to determine if the property is suitable for their needs.

LAND FOR
SALE/LEASE

±43,560 SF OF CM-M2 INDUSTRIAL LAND

2041 DAVIE AVE, COMMERCE, CA 90040

PROPERTY SITE PLAN



*Current Redevelopment Plan - Reconstructing Prior Structure. Buyer to Verify

FOR MORE INFORMATION, PLEASE CONTACT

LOCAL EXPERTISE. INTERNATIONAL REACH. WORLD CLASS.



TONY NAPLES

Senior Vice President | LIC NO 01811344

tnaples@lee-associates.com

818.395.4373



MATTISON BEHR

Senior Associate | LIC NO 02091054

mbehr@lee-associates.com

818.434.9116



Lee & Associates | Downtown Los Angeles
CORP ID 02174865

1201 N Main St
Los Angeles, CA 90012

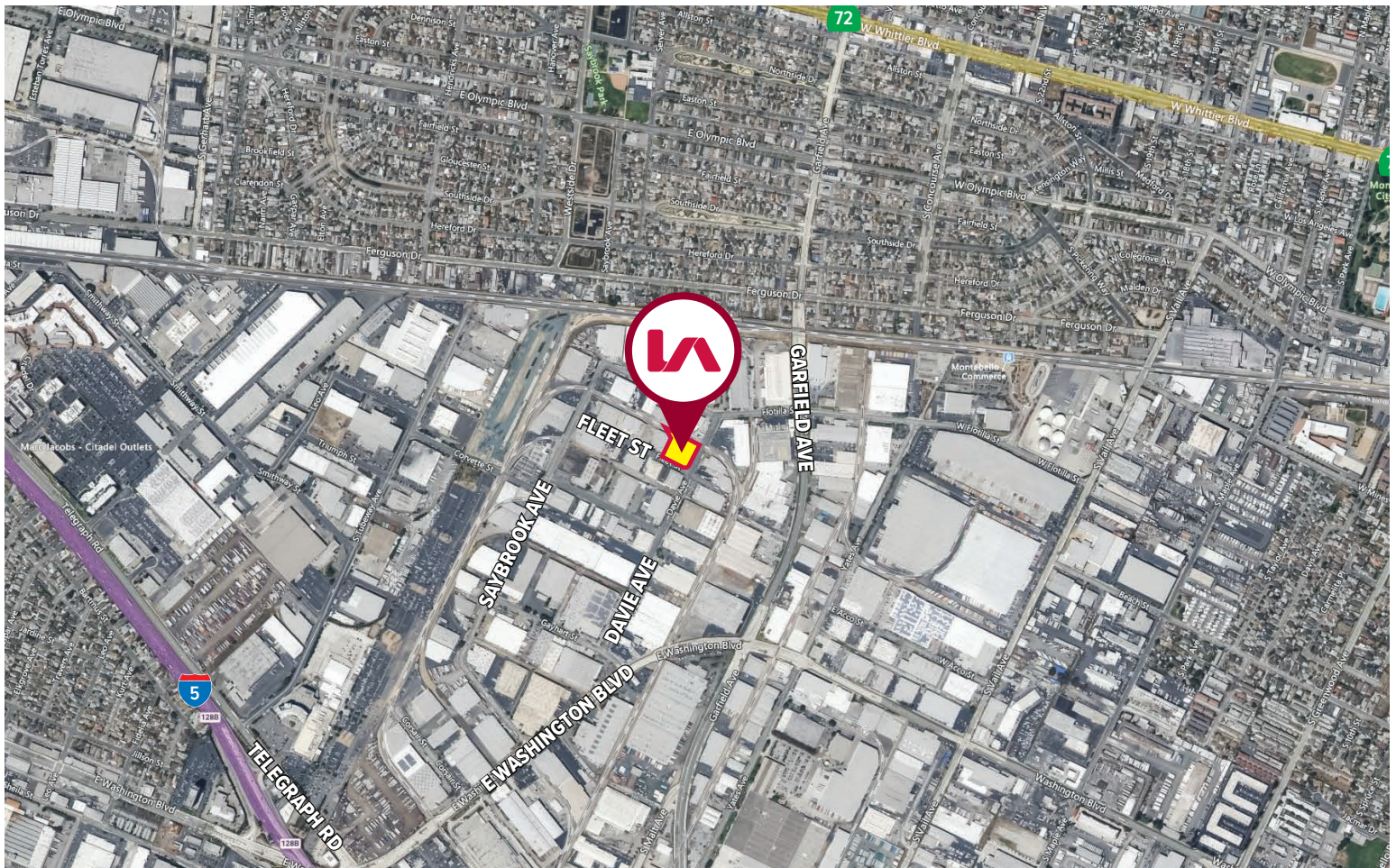
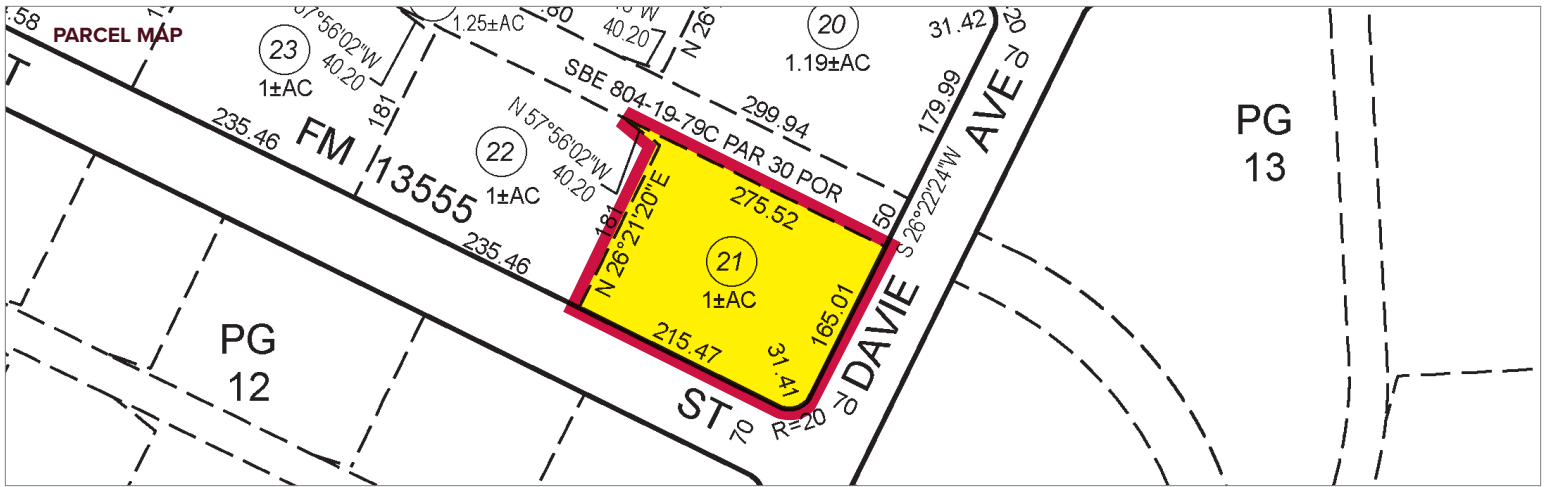
LEE-ASSOCIATES.COM/DOWNTOWNLA

The information has been furnished from sources which we deem reliable, but for which we assume no liability. Any projections, opinions, assumptions or estimates used are for example only and do not represent the current or future performance of the property. Buyers should consult with their independent advisors to determine if the property is suitable for their needs.

**LAND FOR
SALE/LEASE**

±43,560 SF OF CM-M2 INDUSTRIAL LAND

2041 DAVIE AVE, COMMERCE, CA 90040



FOR MORE INFORMATION, PLEASE CONTACT

LOCAL EXPERTISE. INTERNATIONAL REACH. WORLD CLASS.



TONY NAPLES

Senior Vice President | LIC NO 01811344

tnaples@lee-associates.com

818.395.4373



MATTISON BEHR

Senior Associate | LIC NO 02091054

mbehr@lee-associates.com

818.434.9116



Lee & Associates | Downtown Los Angeles
CORP ID 02174865

1201 N Main St
Los Angeles, CA 90012

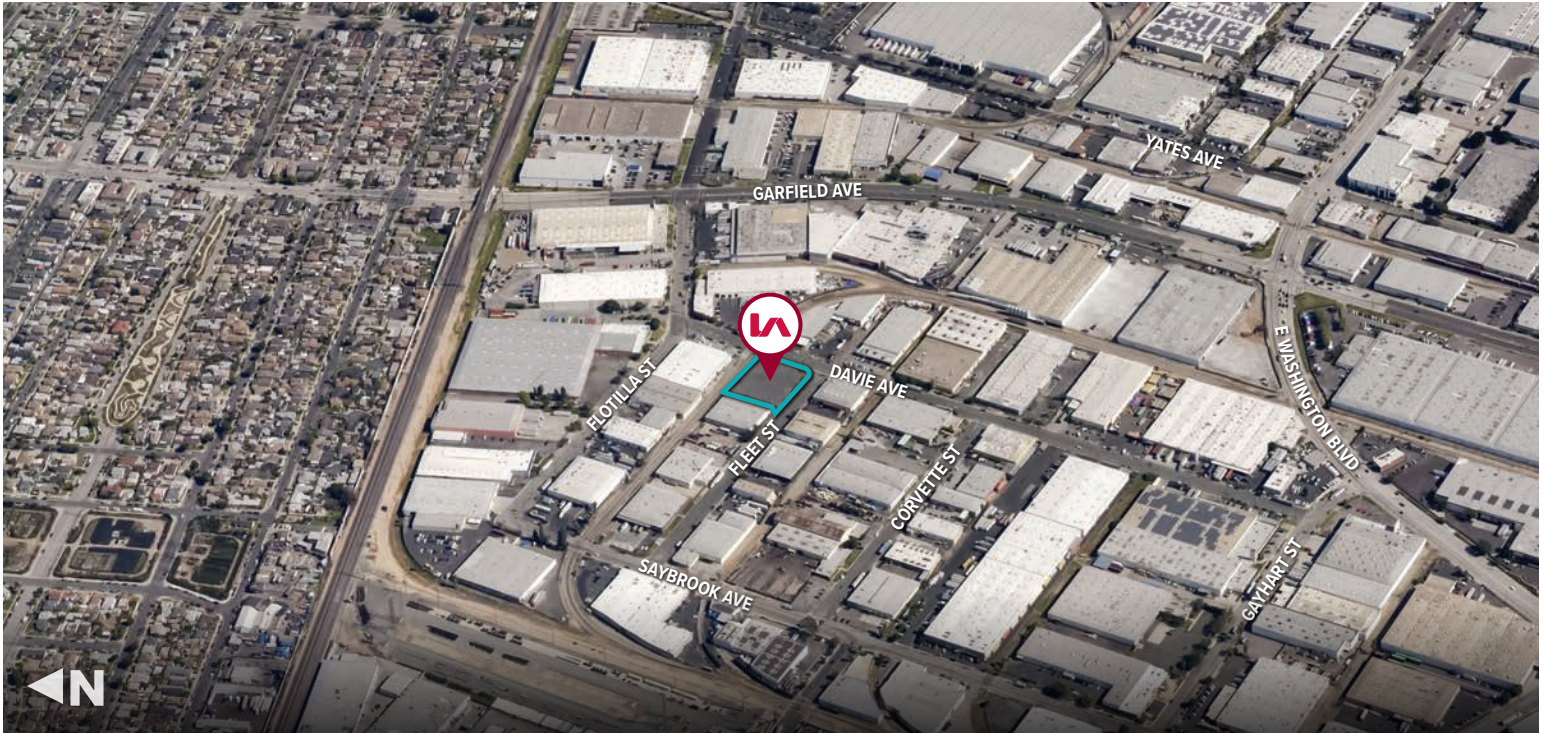
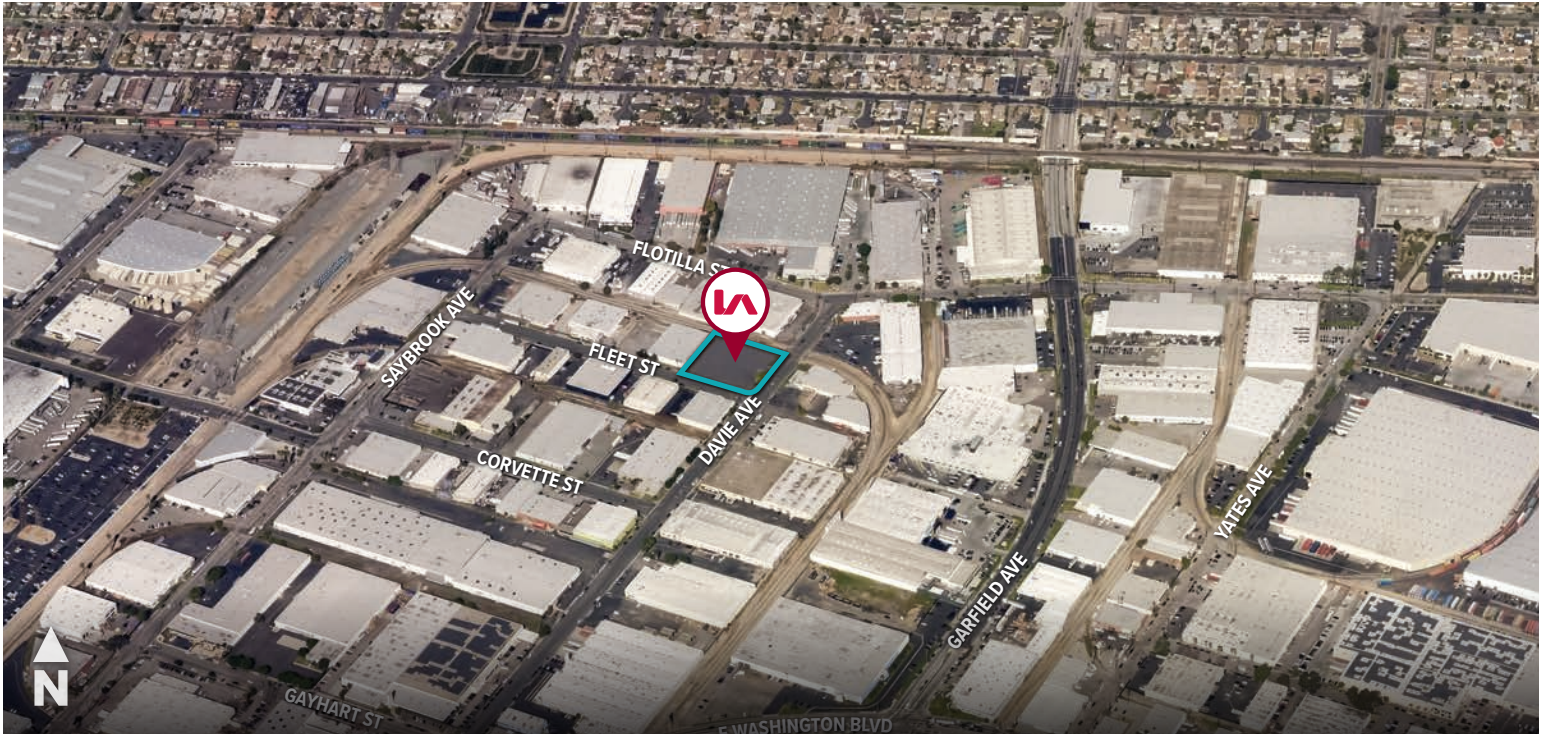
LEE-ASSOCIATES.COM/DOWNTOWNLA

The information has been furnished from sources which we deem reliable, but for which we assume no liability. Any projections, opinions, assumptions or estimates used are for example only and do not represent the current or future performance of the property. Buyers should consult with their independent advisors to determine if the property is suitable for their needs.

LAND FOR
SALE/LEASE

±43,560 SF OF CM-M2 INDUSTRIAL LAND

2041 DAVIE AVE, COMMERCE, CA 90040



FOR MORE INFORMATION, PLEASE CONTACT

LOCAL EXPERTISE. INTERNATIONAL REACH. WORLD CLASS.



TONY NAPLES

Senior Vice President | LIC NO 01811344

tnaples@lee-associates.com

818.395.4373



MATTISON BEHR

Senior Associate | LIC NO 02091054

mbehr@lee-associates.com

818.434.9116



Lee & Associates | Downtown Los Angeles
CORP ID 02174865

1201 N Main St
Los Angeles, CA 90012

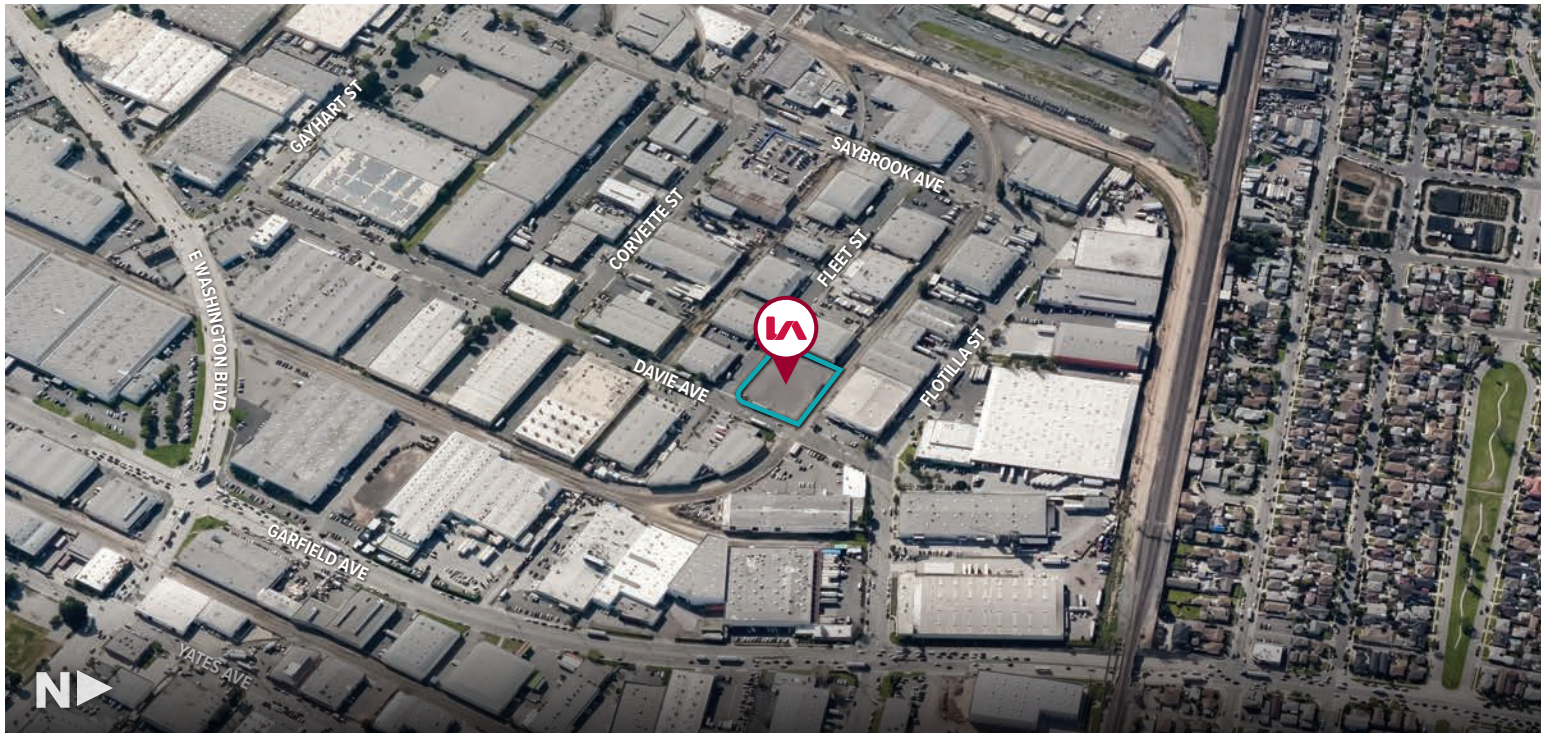
LEE-ASSOCIATES.COM/DOWNTOWNLA

The information has been furnished from sources which we deem reliable, but for which we assume no liability. Any projections, opinions, assumptions or estimates used are for example only and do not represent the current or future performance of the property. Buyers should consult with their independent advisors to determine if the property is suitable for their needs.

LAND FOR
SALE/LEASE

±43,560 SF OF CM-M2 INDUSTRIAL LAND

2041 DAVIE AVE, COMMERCE, CA 90040



FOR MORE INFORMATION, PLEASE CONTACT

LOCAL EXPERTISE. INTERNATIONAL REACH. WORLD CLASS.



TONY NAPLES

Senior Vice President | LIC NO 01811344

tnaples@lee-associates.com

818.395.4373



MATTISON BEHR

Senior Associate | LIC NO 02091054

mbehr@lee-associates.com

818.434.9116



Lee & Associates | Downtown Los Angeles
CORP ID 02174865

1201 N Main St
Los Angeles, CA 90012

LEE-ASSOCIATES.COM/DOWNTOWNLA

The information has been furnished from sources which we deem reliable, but for which we assume no liability. Any projections, opinions, assumptions or estimates used are for example only and do not represent the current or future performance of the property. Buyers should consult with their independent advisors to determine if the property is suitable for their needs.