

For Lease

3,938 SF | \$18.50 SF/yr
Office Space



4101 Route 42 S

Blackwood, New Jersey 08012

Property Highlights

- Unit B-C totaling 3,938 +/- SF available within a professional office building
- 1st floor - 1,956 +/- SF
- Lower level 1,982 +/- SF (staff lounge / support area)
- Off-street parking for 15 cars
- Easy Access to Route 42 & Atlantic City Expressway
- Available for immediate occupancy

Offering Summary

Lease Rate:	\$18.50 SF/yr (NNN)
Building Size:	7,140 SF
Available SF:	3,938 SF
Lot Size:	0.69 Acres

Demographics

	0.5 Miles	1 Mile	1.5 Miles
Total Households	358	2,478	5,286
Total Population	1,022	6,998	14,819

For More Information

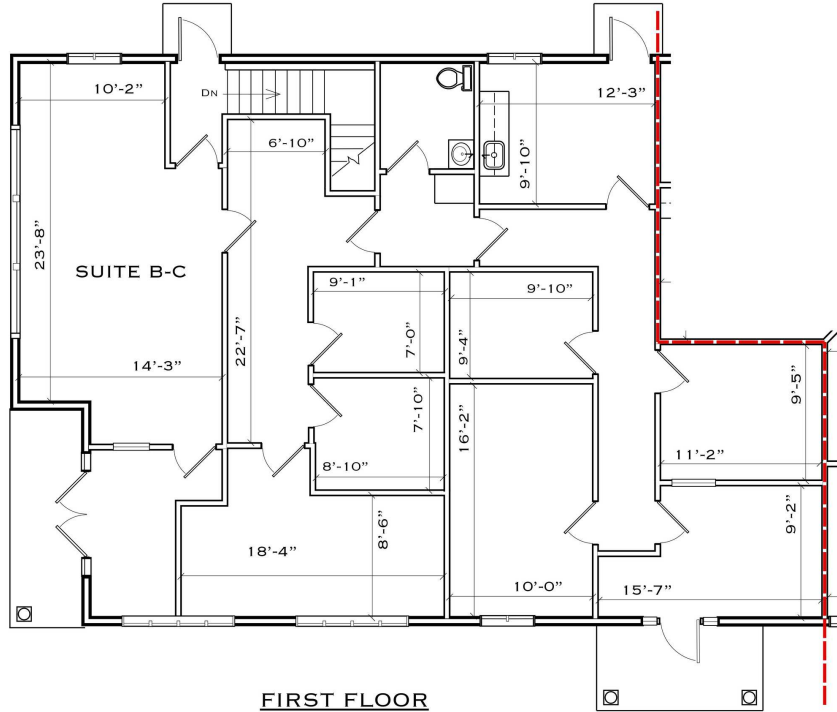
Joe Riggs

O: 609 352 1162
joe.riggs@naimertz.com

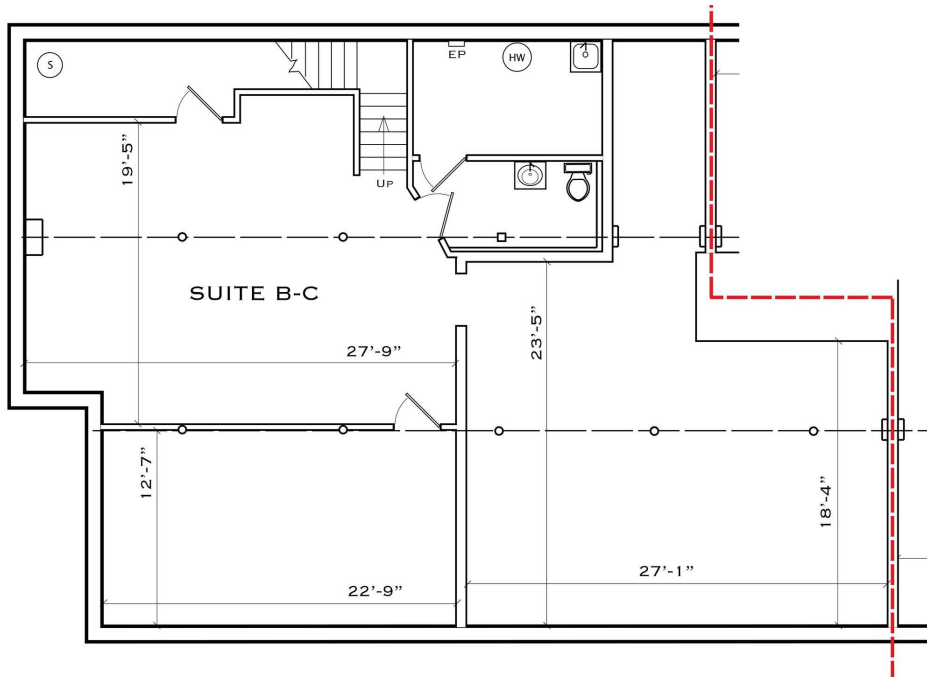
Will Frank

O: 856 724 4248
will.frank@naimertz.com

For Lease
 3,938 SF | \$18.50 SF/yr
 Office Space



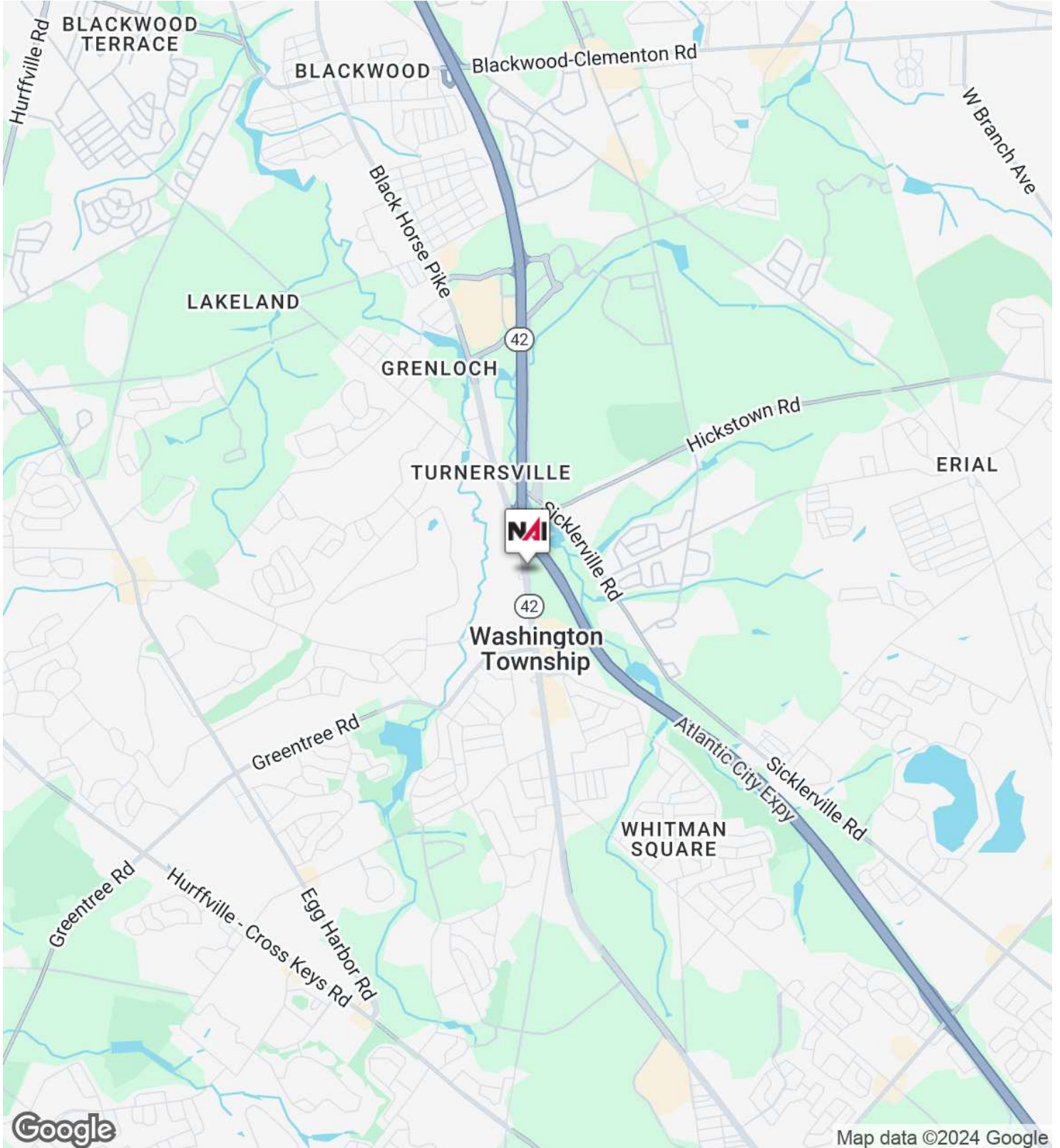
FIRST FLOOR
SUITE B-C
 1,956 SQ. FT.

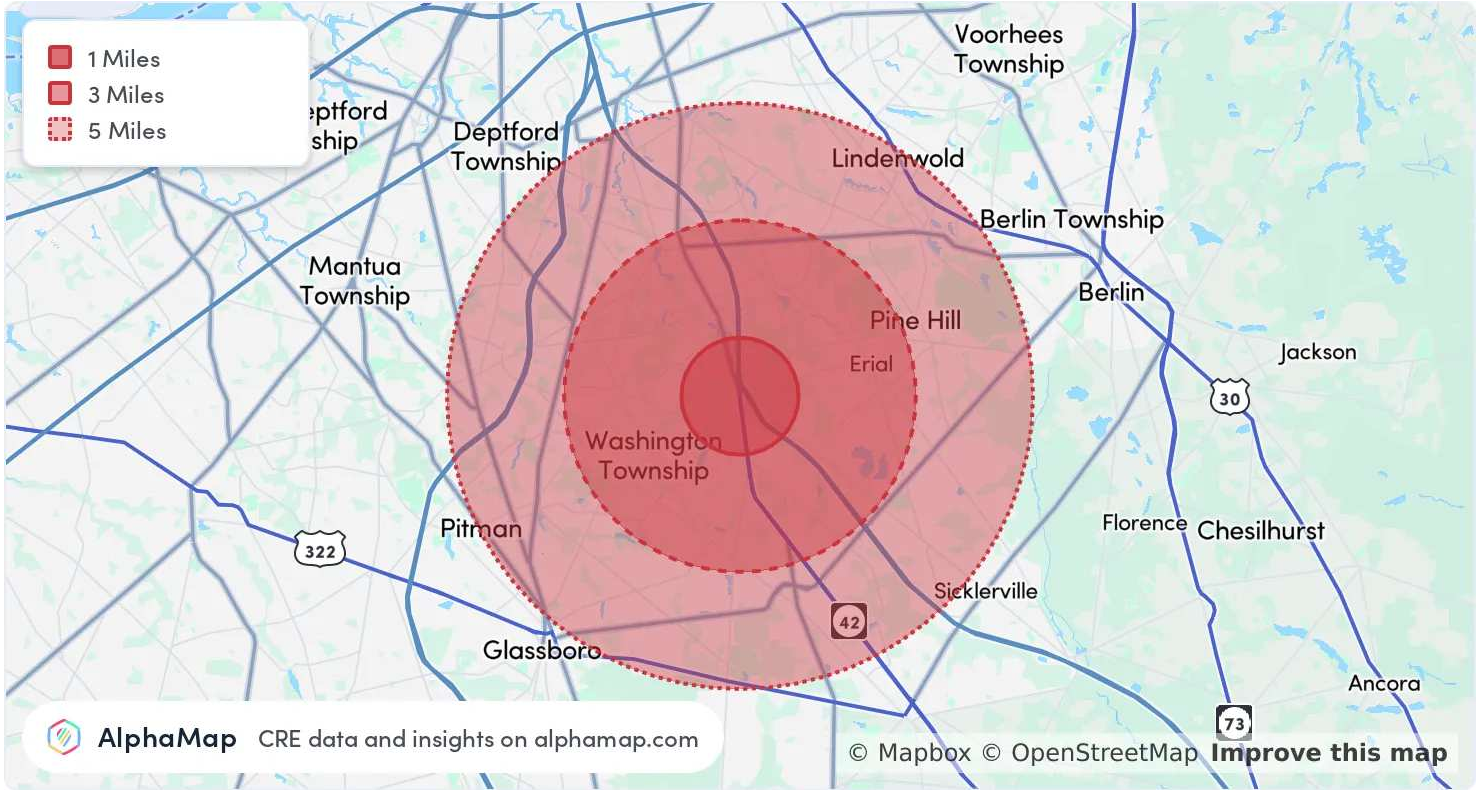


BASEMENT
SUITE B-C
 1,982 SQ. FT.

For Lease

3,938 SF | \$18.50 SF/yr
Office Space





Population	1 Mile	3 Miles	5 Miles
Total Population	6,998	72,308	179,743
Average Age	41	41	41
Average Age (Male)	41	40	40
Average Age (Female)	42	42	42

Household & Income	1 Mile	3 Miles	5 Miles
Total Households	2,478	26,607	68,412
Persons per HH	2.8	2.7	2.6
Average HH Income	\$135,196	\$136,055	\$126,495
Average House Value	\$303,282	\$322,876	\$307,011
Per Capita Income	\$48,284	\$50,390	\$48,651

Map and demographics data derived from AlphaMap