

BASE OF BEARING
 N8 STATE GRID
 SOUTH ZONE

 BASE OF ELEVATION
 CITY OF PASCO #79
 NAVD 88 DATUM
 ELEV=422.84'

 S.W. 1/4 OF SEC. 17, T.09N., R.30E., W.M.
 CITY OF PASCO,
 FRANKLIN COUNTY, WASHINGTON

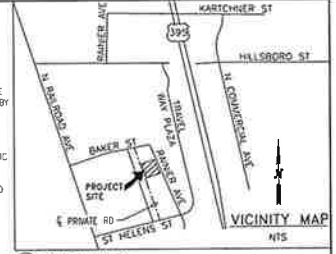
 BASED ON A SURVEY BY
 STRATTON SURVEYING & MAPPING, PC

 ESTIMATED IN-PLACE
 EARTHWORK QUANTITIES
 CUT: 1,680 CY
 FILL: 10 CY

SYMBOL LEGEND	
EXISTING	PROPOSED
---	ACP
---	SIDEWALK
---	LANDSCAPING
---	SHRUB
---	TREE
---	RETAINING WALL
---	CMU WALL
---	EDGE OF PAVEMENT
---	CURB
---	ROW / PROP LINE
---	SWALE INVERT
---	EASEMENT
---	ORIGINAL GROUND CONTOUR
---	6" CHAIN LINK FENCE
---	ROD IRON FENCE
---	PAYING PEAK
---	PAYING VALLEY
---	DRAINAGE DIRECTION
---	STORM DRAIN
---	SANITARY SEWER LINE
---	WATER LINE
---	IRRIGATION LINE
---	UNDERGROUND UTILITY LINE
---	UNDERGROUND TELEPHONE LINE
---	STREET LIGHT
---	STREET SIGN
---	SANITARY SEWER MANHOLE
---	CLEAN OUT
---	DOWNSPOUT
---	24" CATCH BASIN
---	48" CATCH BASIN
---	FILTRATION TRENCH
---	FLOW DIRECTION
---	VALVE
---	BACKFLOW PREVENTION DEVICE
---	REDUCER
---	FIRE HYDRANT
---	PIPE STUB-OUT
---	BLOW OFF
---	WATER METER
---	TELEPHONE PEDESTAL
---	TRANSFORMER
---	JUNCTION BOX
---	DISCONNECT
---	EXTD GRADE ELEV
---	DESIGN FINISH GRADE
---	DESIGN TOP OF CURB
---	UNDEA (3)
---	JUNIPER (4)
---	BUNCH GRASS (5)
---	DAYLILIE (4)

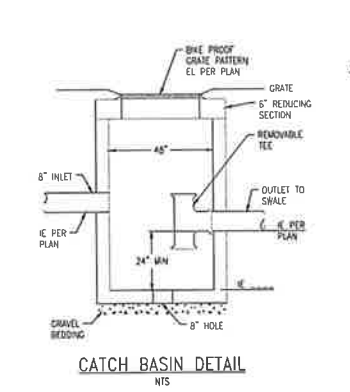
- ### CONSTRUCTION NOTES
- ALL CONSTRUCTION WORK AND MATERIALS ARE TO BE IN CONFORMANCE WITH CURRENT CITY OF PASCO STANDARD SPECIFICATIONS AND DETAILS AND CURRENT EDITION OF WASHINGTON STATE DEPARTMENT OF TRANSPORTATION (WSDOT) STANDARD SPECIFICATIONS FOR ROAD, BRIDGE AND MUNICIPAL CONSTRUCTION.
 - STORM INLET PROTECTION SHALL BE INSTALLED IN ALL CATCH BASINS WITHIN THE RIGHT OF WAY. INLET PROTECTION SHALL NOT BE REMOVED UNTIL INSTRUCTED BY CITY OF PASCO TO DO SO. INSERT SHALL BE KEPT IN GOOD WORKING ORDER WITH NOT RIPS, TEARS OR ACCUMULATION OF SEDIMENT ON TOP OF FACING.
 - ALL CONTRACTORS WORKING WITHIN THE RIGHT OF WAY OR INVOLVING CITY UTILITIES ARE REQUIRED TO BE LICENSED & BONDED TO DO WORK IN THE PUBLIC RIGHT-OF-WAY IN THE CITY OF PASCO.
 - CONTRACTOR TO SCHEDULE PRECONSTRUCTION MEETING WITH THE CITY OF PASCO ENGINEER, (509) 545-3444, 1 WEEK PRIOR TO START OF ANY CONSTRUCTION ACTIVITY. CONTRACTOR MUST GIVE 48 HOURS NOTICE PRIOR TO ANY CONSTRUCTION ACTIVITY WITHIN CITY RIGHT-OF-WAY OR ANY ACTIVITY INVOLVING CITY WATER, STORM, SEWER, OR IRRIGATION.
 - 48-HOUR NOTICE TO THE CITY OF PASCO, 509-545-3444, IS REQUIRED PRIOR TO ANY ACTIVITY WITHIN THE CITY RIGHT OF WAY OR ANY ACTIVITY INVOLVING CITY IRRIGATION, SEWER, STORM OR WATER.
 - EXISTING UTILITIES ARE SHOWN IN APPROXIMATE LOCATIONS ONLY. CONTRACTOR SHALL NOTIFY THE UNDERGROUND UTILITY LOCATION CENTER 2 WORKING DAYS IN ADVANCE OF ANY CONSTRUCTION. PHONE NO. 811. CONTRACTOR SHALL VERIFY ALL UTILITY LOCATIONS PRIOR TO CONSTRUCTION.
 - IN THE EVENT OF DISCREPANCY IN ELEVATION OR HORIZONTAL DIMENSION IN THE FIELD WITH THESE PLANS, THE CONTRACTOR SHALL CONTACT THE ENGINEER IMMEDIATELY TO RESOLVE THE DISCREPANCY BEFORE PROCEEDING WITH ASSOCIATED CONSTRUCTION.
 - CONTRACTOR IS SOLELY RESPONSIBLE FOR THE MEANS, METHODS & TECHNIQUES OF CONSTRUCTION AS WELL AS MAINTAINING A SAFE WORK PLACE FOR ALL CONSTRUCTION ACTIVITIES.
 - CONTRACTOR SHALL PROVIDE OWNER WITH ONE SET OF PLANS SHOWING ALL CHANGES FROM THE APPROVED DESIGN DIMENSIONS AND ELEVATIONS FOR USE IN PREPARING CONSTRUCTION RECORD DRAWINGS. A RECORD DRAWING OF CONSTRUCTION WILL BE REQUIRED BEFORE THE CITY GRANTS FINAL ACCEPTANCE.

- ### WATER NOTES
- CITY TO INSTALL ONE 1" METER FOR IRI AND ONE 1" METER FOR DOMESTIC. CONTRACTOR TO INSTALL 1" APPROVED REDUCED PRESSURE BACKFLOW ASSEMBLY (RPA) ON THE DOMESTIC LINE PER COP STD DWG W-17, AND ONE APPROVED 1" DOUBLE CHECK VALVE ASSEMBLY (DCVA) ON THE IRRIGATION LINE PER COP STD DWG W-14, AND EXTEND 1" PE PIPE TO PROPOSED BUILDING FOR DOMESTIC SERVICE.
 - INSTALL 6" RSDV AT STUB-OUT AND AT 6" DOUBLE CHECK DETECTOR ASSEMBLY (DCDA) IN A VAULT IMMEDIATELY OUTSIDE R-O-W LINE, AND PVE DOWNSTREAM OF RSDV PER COP STD DWG W-11. EXTEND 6" TO BUILDING FIRE PROTECTION SYSTEM. SUBMIT DCDA & VAULT MANUFACTURER CATALOG CUTS TO CITY PRIOR TO ORDERING. EXTEND 4" FDC LINE BACK FROM BUILDING TO 5' FROM PVE.
 - THRUST BLOCKING PER COP STD DWG W-8.

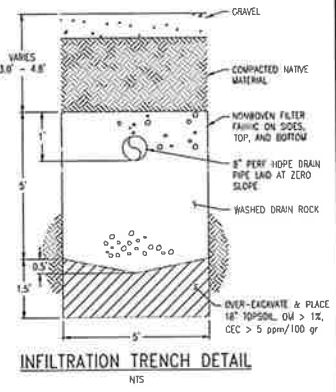


- ### SEWER NOTES
- CONNECT TO EXISTING STUB-OUT AND EXTEND SERVICE PIPE TO BUILDING WITH CLEANOUTS AS SHOWN.
- ### STORM DRAINAGE NOTES
- USE 48" CATCH BASINS WITH 2" SWUP BELOW STORM DRAIN PIPE. STORM DRAIN PIPE TO BE 6" PVC SDR 35.
 - INSTALL 8" SD TO THE DOWNSPOUTS TO CATCH BASINS.
 - INSTALL 30 LF 8" PERFORATED PIPE WRAPPED IN NON-WOVEN FABRIC TO DRAIN SOLID PUP (2 PLACES).

- ### SURFACING NOTES
- REMOVE EXISTING CURB & GUTTER AND INSTALL DRIVEWAY PER COP STD DWG ST-5, TYPE 1.
 - CONSTRUCT 116± LF SIDEWALK, 7' WIDE PER COP STD DWG ST-4.
 - PAVEMENT SECTION IS 6" CONCRETE, 4X6 ON 4" CSTC AND COMPACTED SUBGRADE. COMPACT CSTC & SUBGRADE TO 95% ASTM D-1557.
 - VERIFY MAX SLOPE FOR ADA-COMPLIANT PARKING IS LESS THAN 2% AT TOP OF BASE ROCK PRIOR TO PAVING.
 - PROVIDE 6" LONG ASPHALT RAMP WITH SLOPE LESS THAN 8%.
 - CONSTRUCT MONUMENT-FOUR CURB ON THE EDGE OF CONCRETE PARKING AREA FRONTAGE.



CATCH BASIN DETAIL
NTS



INFILTRATION TRENCH DETAIL
NTS

OWNER/DEVELOPER
 CRF METAL WORKS
 3120 TRAVEL PLAZA WAY
 PASCO, WA 99301
 PHONE: 509-430-7609

I AM CERTIFYING THAT I HAVE CONTACTED ALL OF THE IMPACTED OUTSIDE UTILITY PROVIDERS ASSOCIATED WITH THIS PROJECT. FURTHERMORE, I WILL WORK WITH THOSE UTILITIES TO ENSURE THAT THEIR INFRASTRUCTURE WILL BE ADDRESSED PRIOR TO THE START OF CONSTRUCTION WITHOUT CHANGE TO CITY APPROVED PLANS.



DATE:	11-03-23
DRAWN BY:	DJK
DWG. NO.:	257-0078

CRF METAL WORKS
 BRANTINGHAM INDUSTRIAL PARK
 PHASE 15

CALL 811 BEFORE YOU DIG

