

# Commercial Space For Lease

Nordby Building



1715 W Nickerson St  
Seattle, Wa 98118

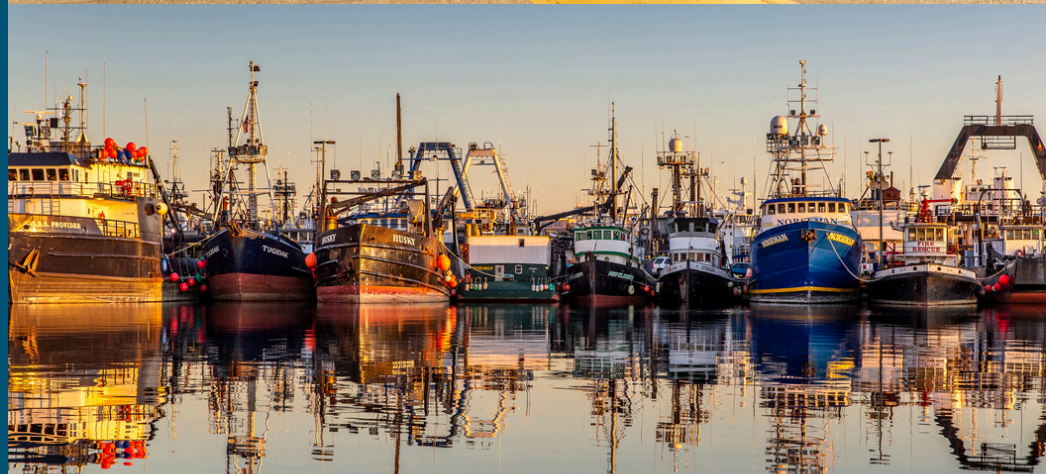
# About the Property

The Nordby Building is a unique commercial property located within the historic Fishermen's Terminal – home of the North Pacific fishing fleet since 1914.

Whether you're looking to expand your business or establish a new presence, Nordby Building provides a distinctive waterfront location with an active, community-oriented environment and rich history.

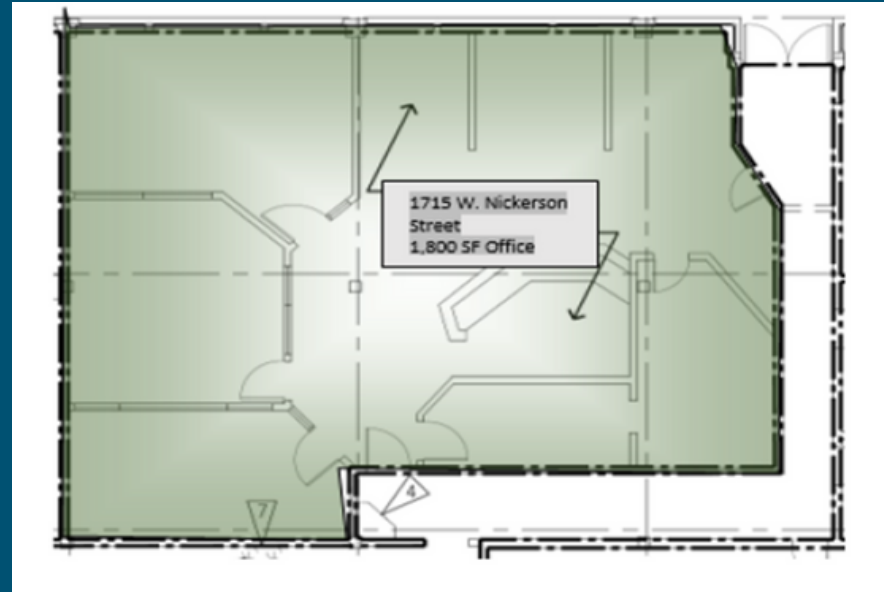
Features and amenities include:

- 24 Hour Access
- Access to Bus Line
- Conferencing Facility
- Property Manager on Site
- Signage
- On Site Restaurant & Cafe
- Electric Vehicle Charging



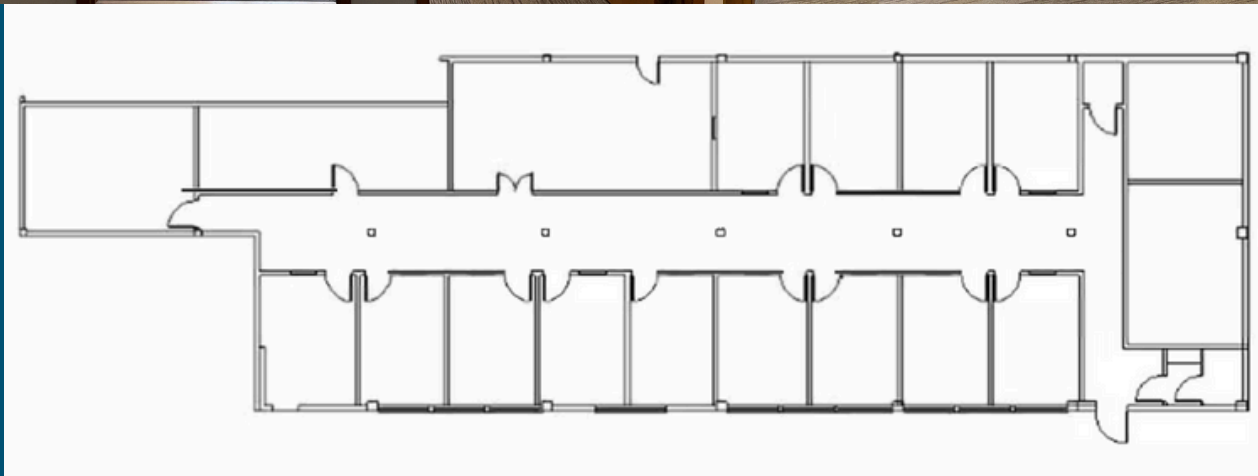
# STE 1715 W Nickerson

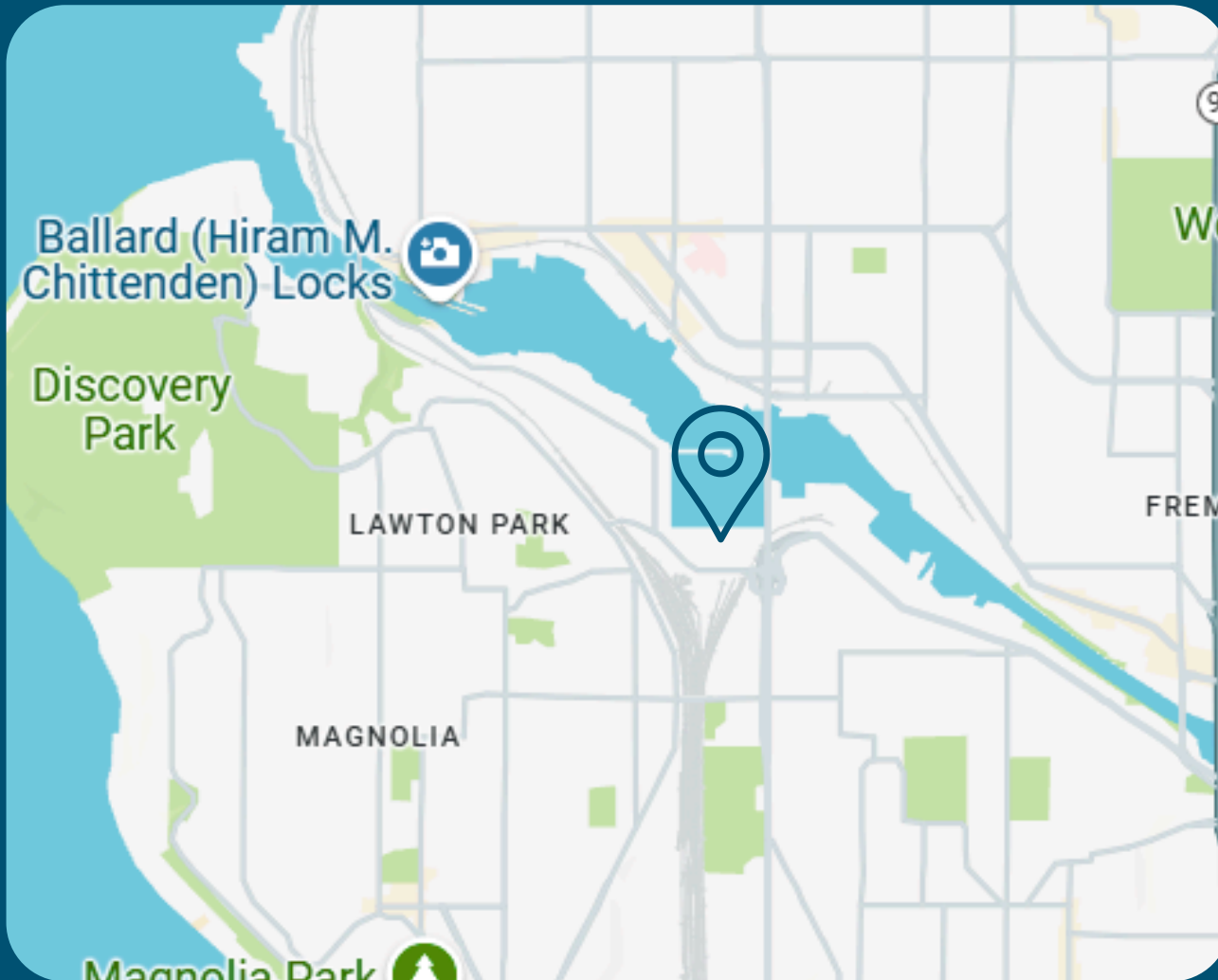
1,800 SF | AVAILABLE NOW



# Suite D

4,967 SF | AVAILABLE NOW





FOR MORE INFORMATION CONTACT

**Jessica  
Carlson**

(206) 787-7055

[Carlson.J@portseattle.org](mailto:Carlson.J@portseattle.org)



1715 W Nickerson St, Seattle, WA 98119