

FOR LEASE

426 SALEM TURNPIKE, BOZRAH

DEMOGRAPHICS

POPULATION

1 mile: 938
3 miles: 12,251
5 miles: 46,708

HOUSEHOLDS

1 mile: 382
3 miles: 4,901
5 miles: 18,144

AVG. HOUSEHOLD \$

1 mile: 119,078
3 miles: 103,841
5 miles: 92,012

1st Floor - \$1,800/Month
2nd Floor - \$1,200/Month
GROSS + UTILITIES

Contact for Details:

SAM LYMAN

Phone
(860) 876-0359

Email
SL@retradeCRE.com

- Retail/Office Space
- **First Floor: 1,500 SF** with reception window & lobby area, open floor concept
- 3 offices/rooms
- **Second Floor: 840 SF** with two offices and file room • Located just over Norwich town line
- Easy access to I-395 • Traffic Count: 6,300 ADT • Other Tenants: Bozrah Pizza, Currie's Plumbing & HVAC, Small Jay CPA • City Gas, Well Water, and Septic

retrade

 (860) 600-4400 | (617) 600-4400  retradeCRE.com

FOR LEASE: 426 Salem Turnpike, Bozrah

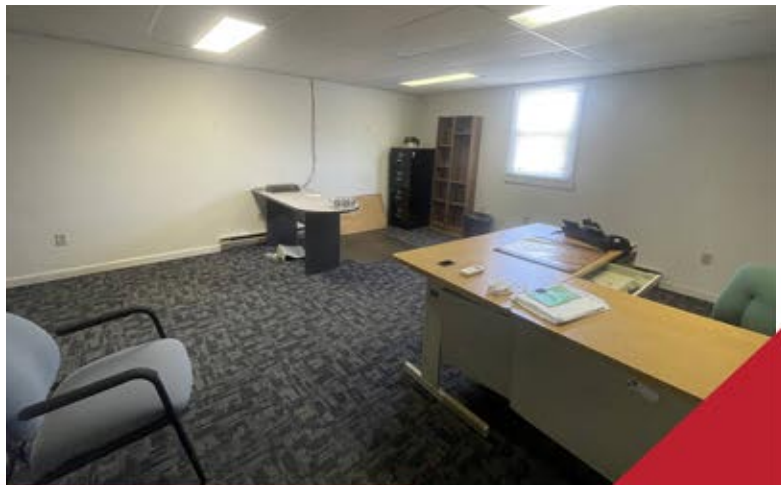
PROPERTY PHOTOGRAPHS

GREAT VISIBILITY FOR RETAIL | OFFICE USE!

1ST FLOOR PICTURES



2ND FLOOR PICTURES



(860) 600-4400 | (617) 600-4400



retradeCRE.com

FOR LEASE: 426 Salem Turnpike, Bozrah