

STAND-ALONE MEDICAL OFFICE FOR LEASE OR SALE

9831 EAST BELL ROAD - SCOTTSDALE, ARIZONA 85260



VIRTUAL TOUR

J.T. TAYLOR

D: (480) 868-2671 - M: (480) 225-6484 - jt.taylor@orionprop.com

ORION 
INVESTMENT REAL ESTATE

PROPERTY SUMMARY



6,512 SF demisable to **3,256 SF**



Move in ready & renovated in 2018 with high-quality finishes



Located just off the 101 freeway near multiple medical campuses and retail amenities



5 plumbed exams, 1 lab, 13 offices, 5 restrooms, 2 conference rooms, breakroom and reception



Surrounded by a high demographic area

SALE PRICE:

\$2,399,000 (\$368 PSF)

LEASE RATE:

\$25-\$28 NNN
Suite 100: 3,512 SF
Suite 101: 3,512 SF

PARKING:

5/1,000
+ 7 covered and reserved spaces

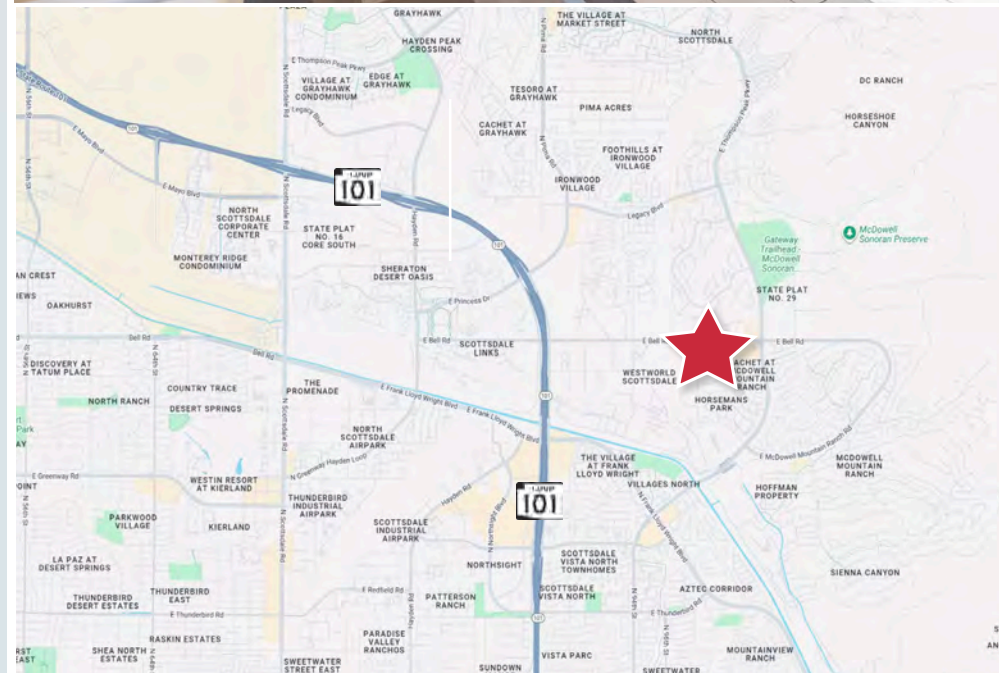
YEAR BUILT/RENOVATED:

2005/2018

HOA FEE:

± 2.80 PSF

STAND-ALONE NORTH SCOTTSDALE
MEDICAL OFFICE FOR LEASE OR SALE



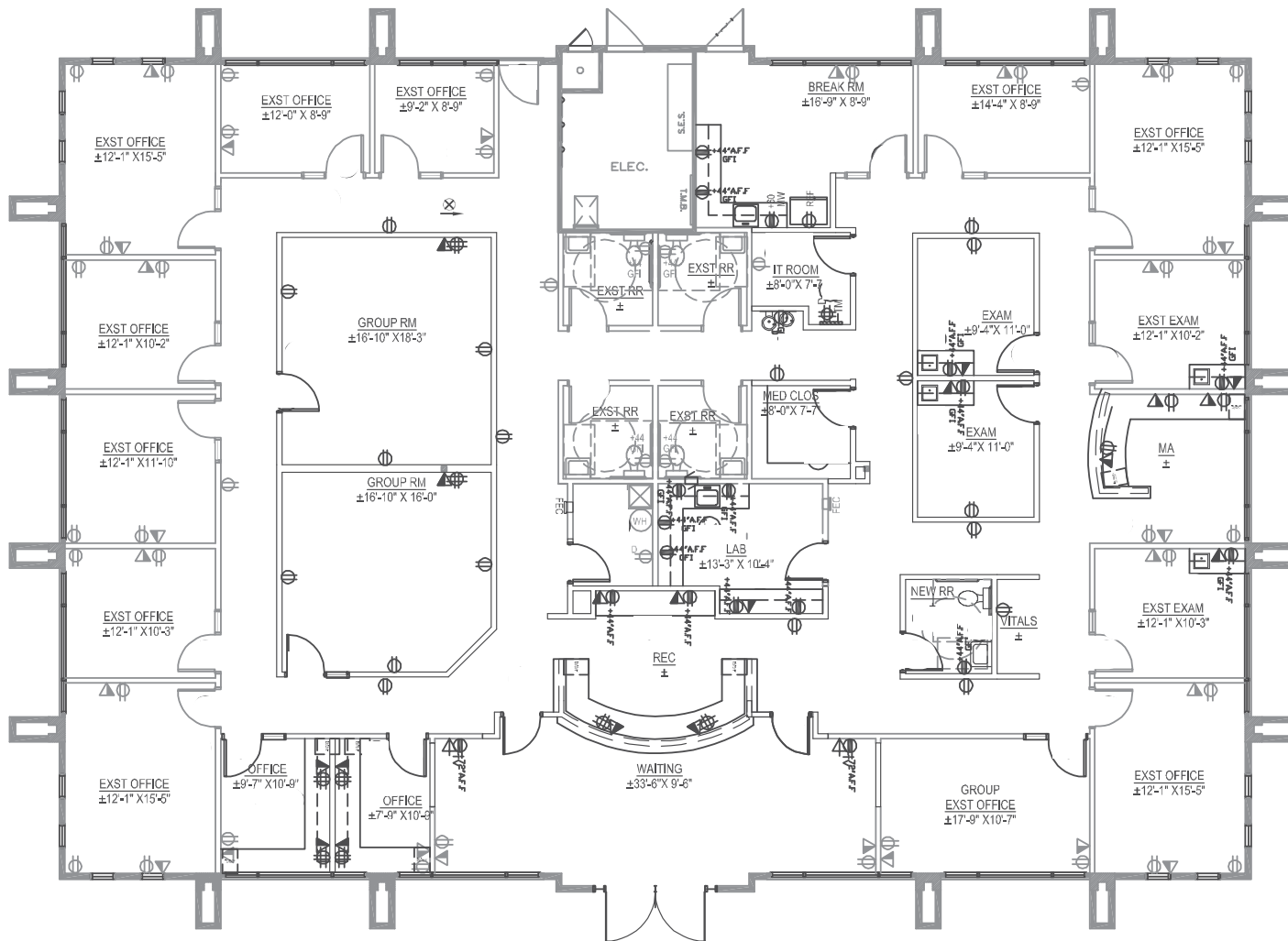
FLOOR PLAN & VIRTUAL TOUR

STAND-ALONE NORTH SCOTTSDALE
MEDICAL OFFICE FOR LEASE OR SALE

6,512 SF DEMISABLE TO 3,256 SF

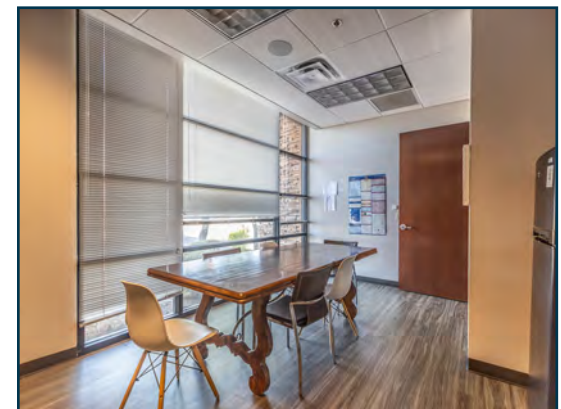


CLICK TO VIEW VIRTUAL TOUR



SUITE 100

SUITE 101



AERIAL VIEW

STAND-ALONE NORTH SCOTTSDALE
MEDICAL OFFICE FOR LEASE OR SALE

APN: 217-73-402/3/4/5
PROPERTY TAXES: \$12,187

LOOP
101

BELL ROAD (30,438 vpd)

98TH STREET

 SUBJECT PROPERTY



AERIAL MAP

STAND-ALONE NORTH SCOTTSDALE
MEDICAL OFFICE FOR LEASE OR SALE



DEMOGRAPHICS

STAND-ALONE NORTH SCOTTSDALE
MEDICAL OFFICE FOR LEASE OR SALE

5 Mile

Daytime
Population

278,247



1 Mile

Average
Household Income

\$227,446



3 Mile

Median
Age

45.1



3 Mile

Average
Household Size

3.0



2025 SUMMARY (SitesUSA)	1 Mile	3 Mile	5 Mile
Daytime Population:	14,091	122,005	278,247
Estimated Population:	8,422	52,893	134,956
Total Households:	3,688	24,220	63,490
Average Household Income:	\$227,446	\$200,662	\$190,192
Median Age:	42.3	45.1	46.4
Average Household Size:	3.0	3.0	2.9
Housing Units:	4,053	26,706	70,181
Total Businesses:	825	7,011	16,881
Total Employees:	5,669	69,112	143,291

