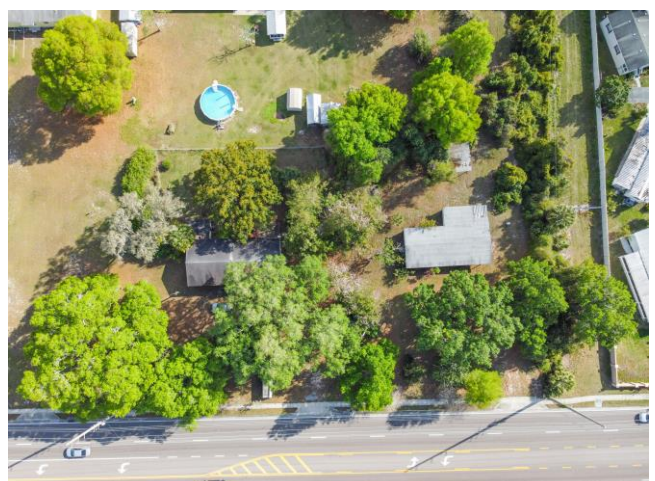


Bloomingtondale 1.9 Acres for Sale

11615 & 11629 Bloomingtondale Ave., Riverview, FL 33578



AERIAL PHOTOS



Bill Besselieu, CCIM
Mobile/Direct: 813-263-5854
besselieu@gmail.com

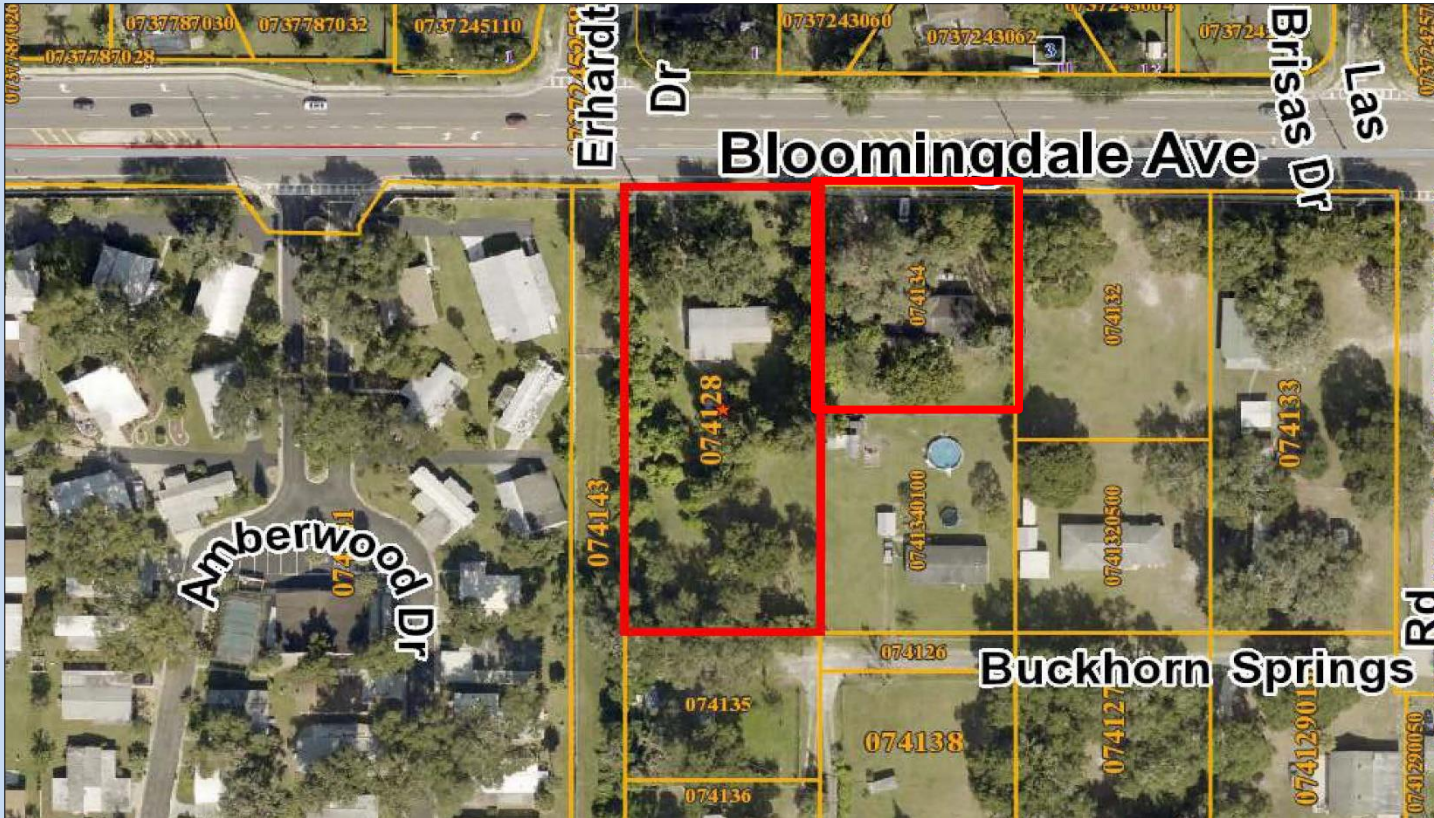
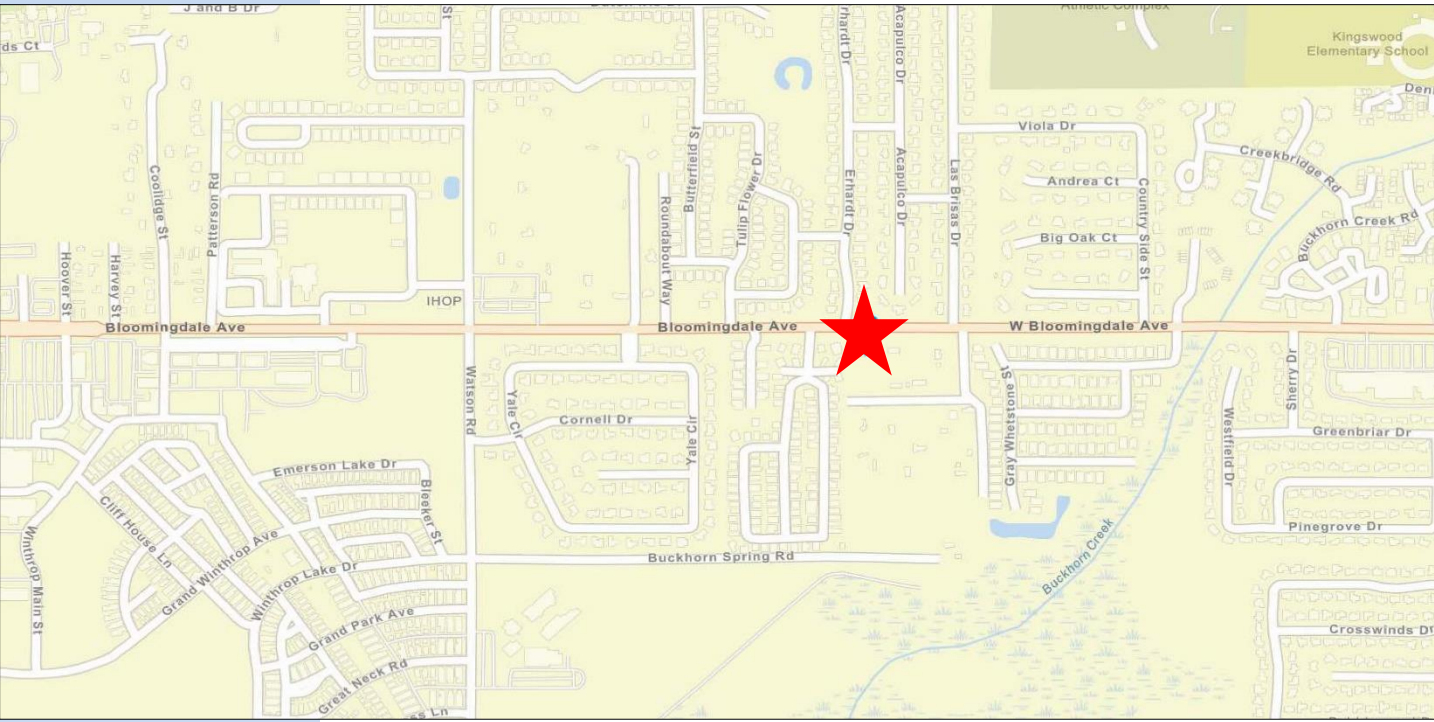
Greg Andretta, SIOR
813-263-4833
greg@andrettaproperties.com

Andretta Properties
Licensed Real Estate Broker
550 N. Reo St. #300 Tampa, FL 33609
Office: 813-889-0889
www.andrettaproperties.com

Bloomington 1.9 Acres for Sale

11615 & 11629 Bloomington Ave., Riverview, FL 33578

LOCATION AND AERIAL MAPS



Bill Besseliu, CCIM
Mobile/Direct: 813-263-5854
besseliu@gmail.com

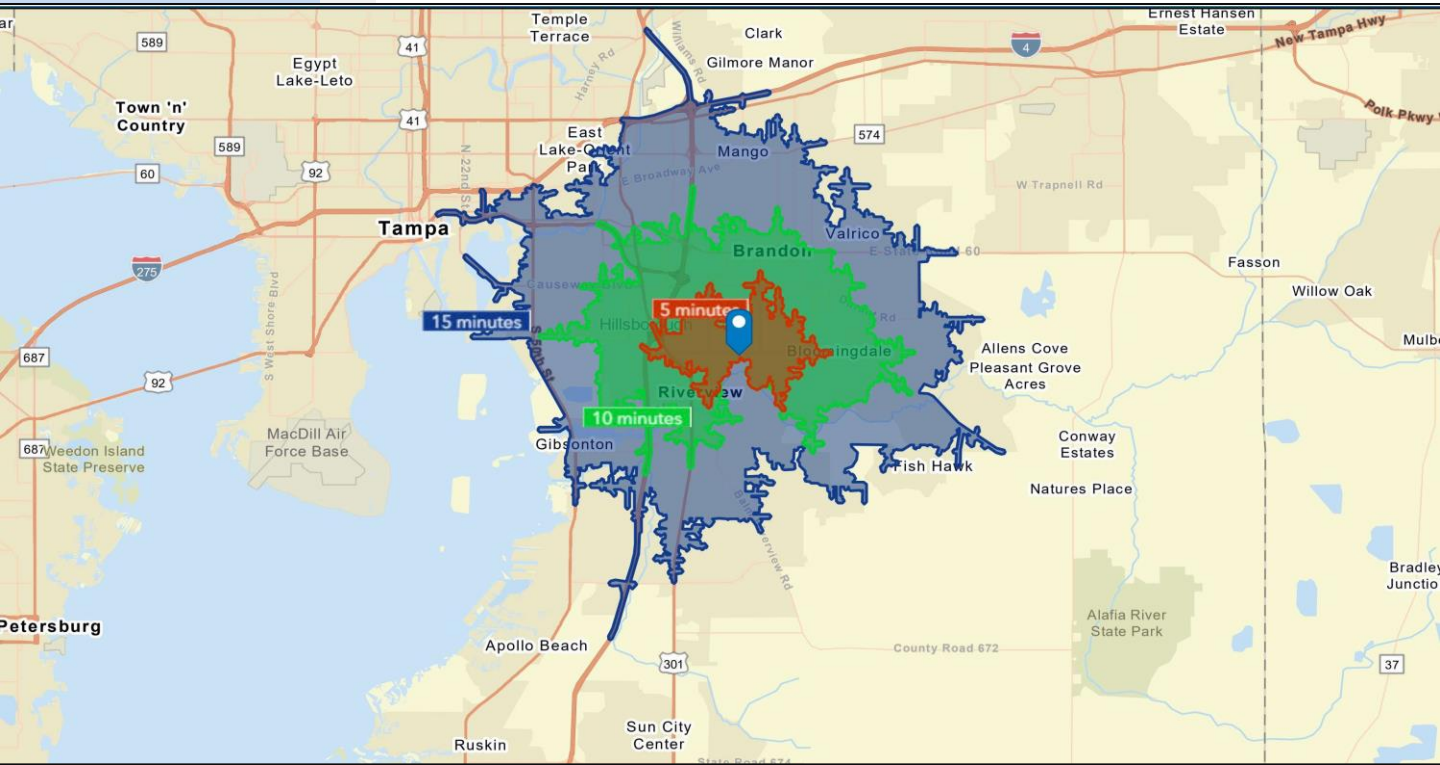
Greg Andretta, SIOR
813-263-4833
greg@andrettaproperties.com

Andretta Properties
Licensed Real Estate Broker
550 N. Reo St. #300 Tampa, FL 33609
Office: 813-889-0889
www.andrettaproperties.com

Bloomington 1.9 Acres for Sale

11615 & 11629 Bloomington Ave., Riverview, FL 33578

DRIVE TIME AND DEMOGRAPHICS



2020 Census Redistricting Data (Public Law 94-171)

11615 Bloomington Ave, Riverview, Florida, 33578
Drive time of 5 minutes

KEY FACTS

33,518
Total Population

14,272
Housing Units

3,675.7
Population Density

2.47
Average Household Size

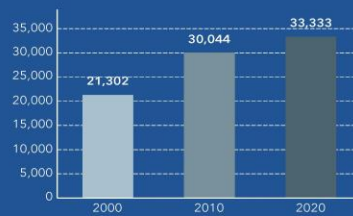
79.6
Diversity Index

The U.S. Census Bureau provides the 50 states, the District of Columbia, and Puerto Rico with population counts to use in their redrawing of congressional and state legislative district boundaries – a process known as “redistricting.”

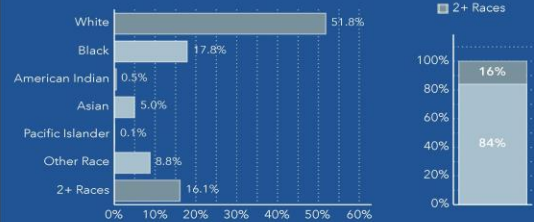
2010-2020 ANNUAL GROWTH RATE



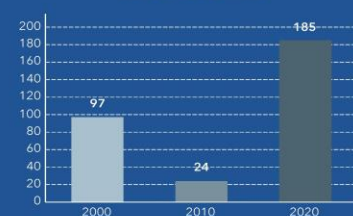
HOUSEHOLD POPULATION



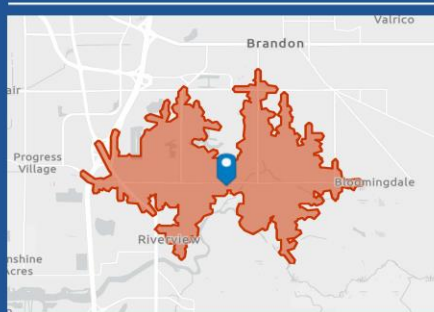
TOTAL POPULATION BY RACE



GROUP QUARTERS



POPULATION BY AGE AND RACE	Less Than 18 Years	18 Years and Older
Total	7,151	26,367
1 Race	5,615	22,511
White	2,916	14,448
Black	1,578	4,401
American Indian/Alaska Native	31	126
Asian	374	1,298
Pacific Islander	3	17
Some Other Race	713	2,220
2 or More Races	1,536	3,856



Source: U.S. Census Bureau, 2020 Redistricting Data (PL 94-171). U.S. Census Bureau 2010 decennial Census data converted by Esri into 2020 geography.



Bill Besselieu, CCIM
Mobile/Direct: 813-263-5854
besselieu@gmail.com

Greg Andretta, SIOR
813-263-4833
greg@andrettaproperties.com

Andretta Properties
Licensed Real Estate Broker
550 N. Reo St. #300 Tampa, FL 33609
Office: 813-889-0889
www.andrettaproperties.com