



## **MEDICAL SUITE AT SENTARA CAREPLEX**

3000 COLISEUM DRIVE | HAMPTON, VA 23666 | [SENTARALEASING.COM](http://SENTARALEASING.COM)

**FOR MORE INFORMATION,  
PLEASE CONTACT:**

**John M. Profilet, SIOR**

757.640.2278 (direct) | 757.679.3278 (mobile) | [jprofilet@slnusbaum.com](mailto:jprofilet@slnusbaum.com)





## PROPERTY HIGHLIGHTS

**\$18.50/LSF, NNN**

**\$8.75 estimated OPEX as of 01-01-20**

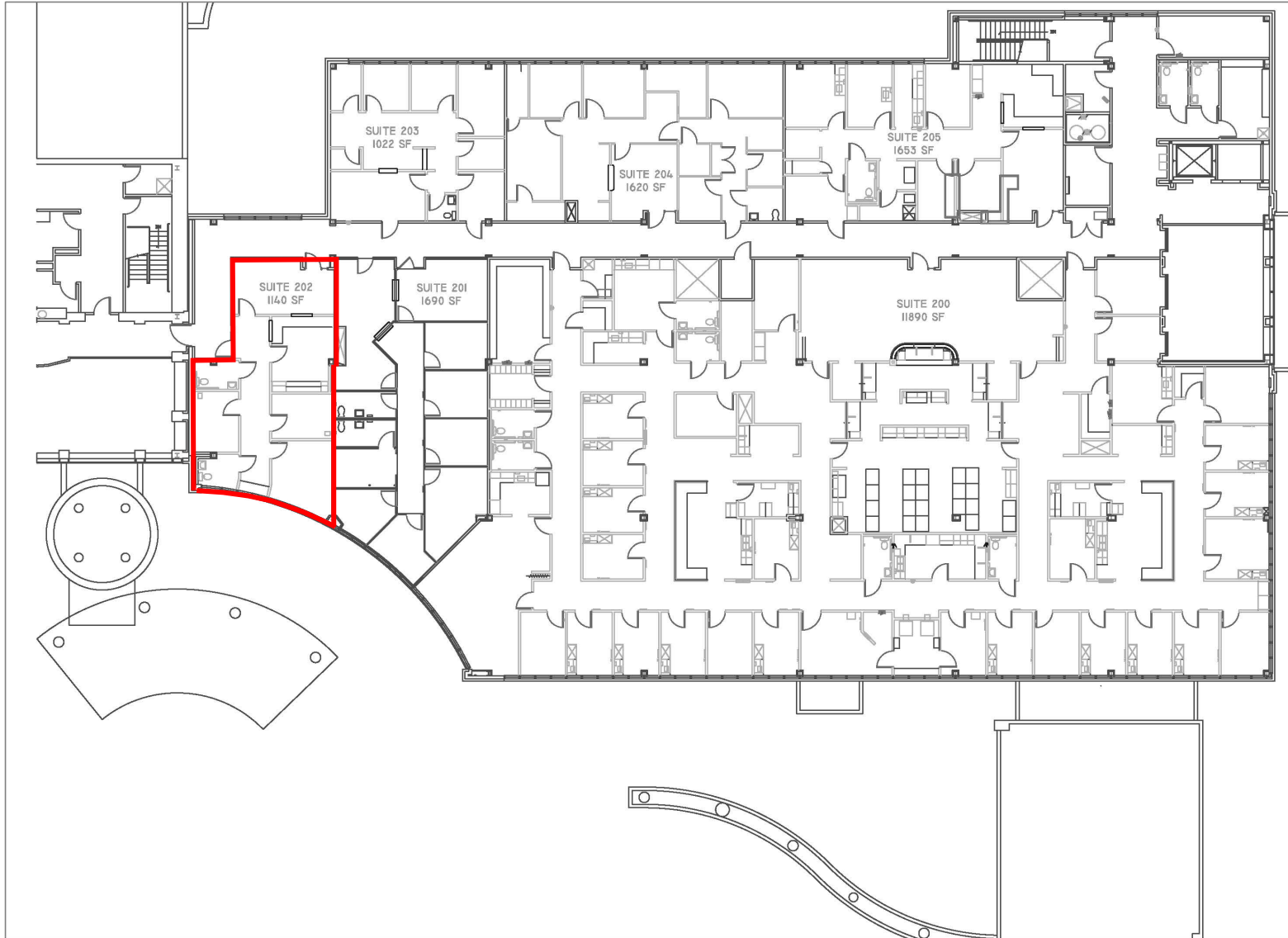
- 1,140 LSF (Suite 202) of second generation medical office space available
- Rare opportunity to lease medical office space located within the Sentara CarePlex Hospital
- Join top tier practices including Sentara Family & Internal Medicine, Sentara Cancer Institute, Hampton Oral & Facial Surgery, and many more
- Suite 202 features two exam rooms, laboratory, physician's office, business office, two private restrooms, and reception area
- Less than two miles from I-64
- Ample surface parking available
- Generous Landlord contribution to tenant's construction costs
- Full service lease includes janitorial service, excluding infectious/regulated medical waste.

FOR LEASE

**FOR MORE INFORMATION,  
PLEASE CONTACT:**

**John M. Profilet, SIOR**

757.640.2278 (direct) | 757.679.3278 (mobile) | [jprofilet@slnusbaum.com](mailto:jprofilet@slnusbaum.com)



**SENTARA**  
FACILITIES INTERIOR DESIGN SERVICES  
5555 GREENWICH ROAD, SUITE 600  
VIRGINIA BEACH, VIRGINIA 23462  
757-697-1087

CAREPLEX MEDICAL OFFICE BUILDING  
SENTARA ENTERPRISES  
HAMPTON, VIRGINIA

Designed: JAT  
Drawn:  
Checked:  
Scale: 1/8" = 1'-0"  
Date: 02/16/05  
File No: 4384\_22ND  
Project No:  
FLOOR  
PLAN  
2ND FLOOR  
Sheet No:  
A-2

**FOR LEASE**

**FOR MORE INFORMATION,  
PLEASE CONTACT:**

**John M. Profilet, SIOR**  
757.640.2278 (direct) | 757.679.3278 (mobile) | jprofilet@slnusbaum.com

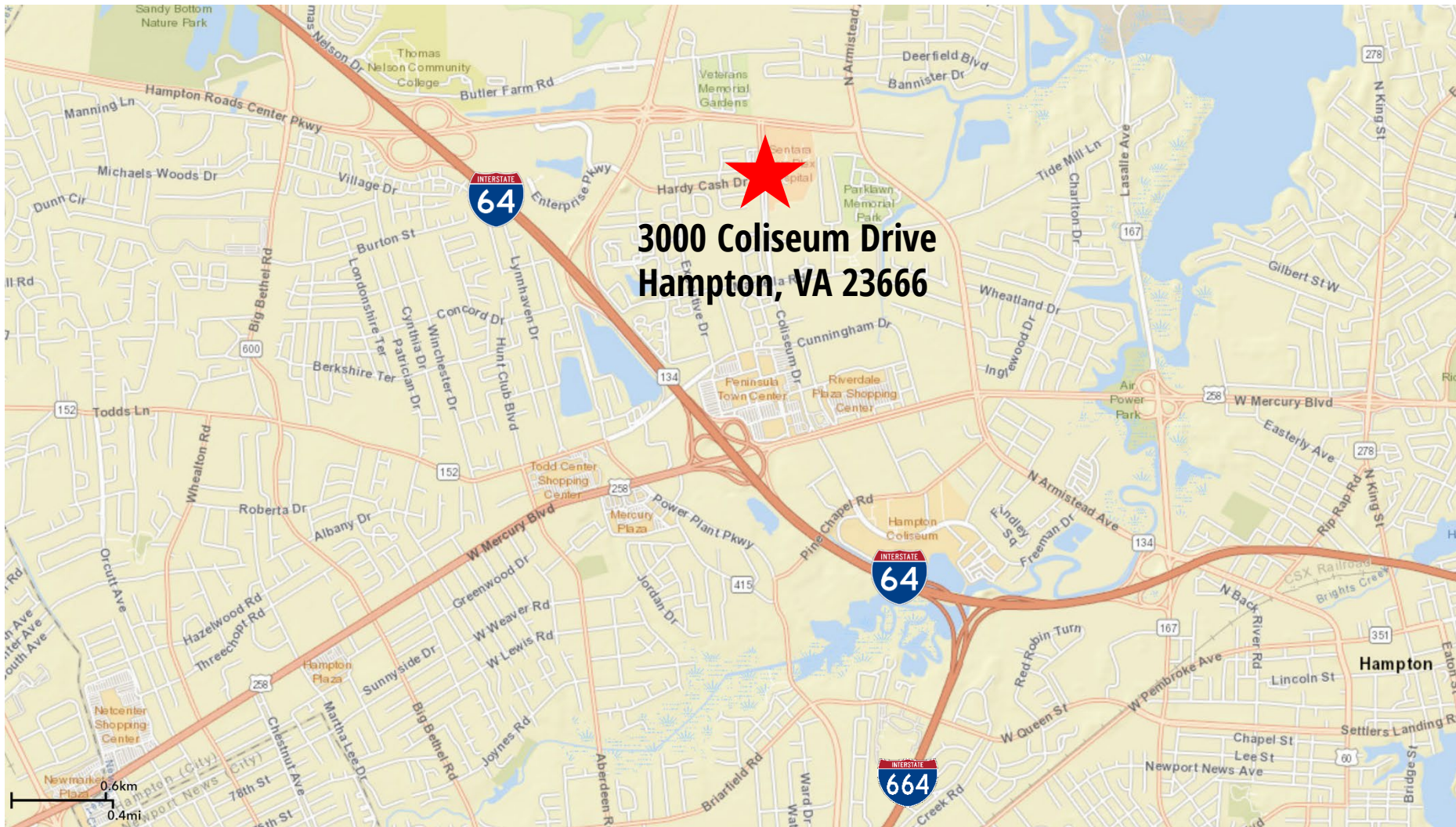




**FOR MORE INFORMATION,  
PLEASE CONTACT:**

**John M. Profilet, SIOR**  
757.640.2278 (direct) | 757.679.3278 (mobile) | [jprofilet@slnusbaum.com](mailto:jprofilet@slnusbaum.com)





**3000 Coliseum Drive  
Hampton, VA 23666**

**DISCLAIMER:**

No warranty or representation, expressed or implied, is made to the accuracy or completeness of the information contained herein, and same is submitted subject to errors, omissions, change of price, rental or other conditions, withdrawal without notice, and to any special listing conditions imposed by the property owner(s). As applicable, we make no representation as to the condition of the property (or properties) in question.

**FOR MORE INFORMATION,  
PLEASE CONTACT:**

**John M. Profilet, SIOR**  
757.640.2278 (direct) | 757.679.3278 (mobile) | [jprofilet@slnusbaum.com](mailto:jprofilet@slnusbaum.com)