



RETAIL SPACE FOR LEASE

5350 GREAT AMERICA PARKWAY

RESTAURANT OPPORTUNITY



For More Information:

KEVIN SAKIMOTO

(408)-390-1670 CELL

(669)-271-4225 OFFICE

kevin@pacgatewayproperties.com

Property Highlights:

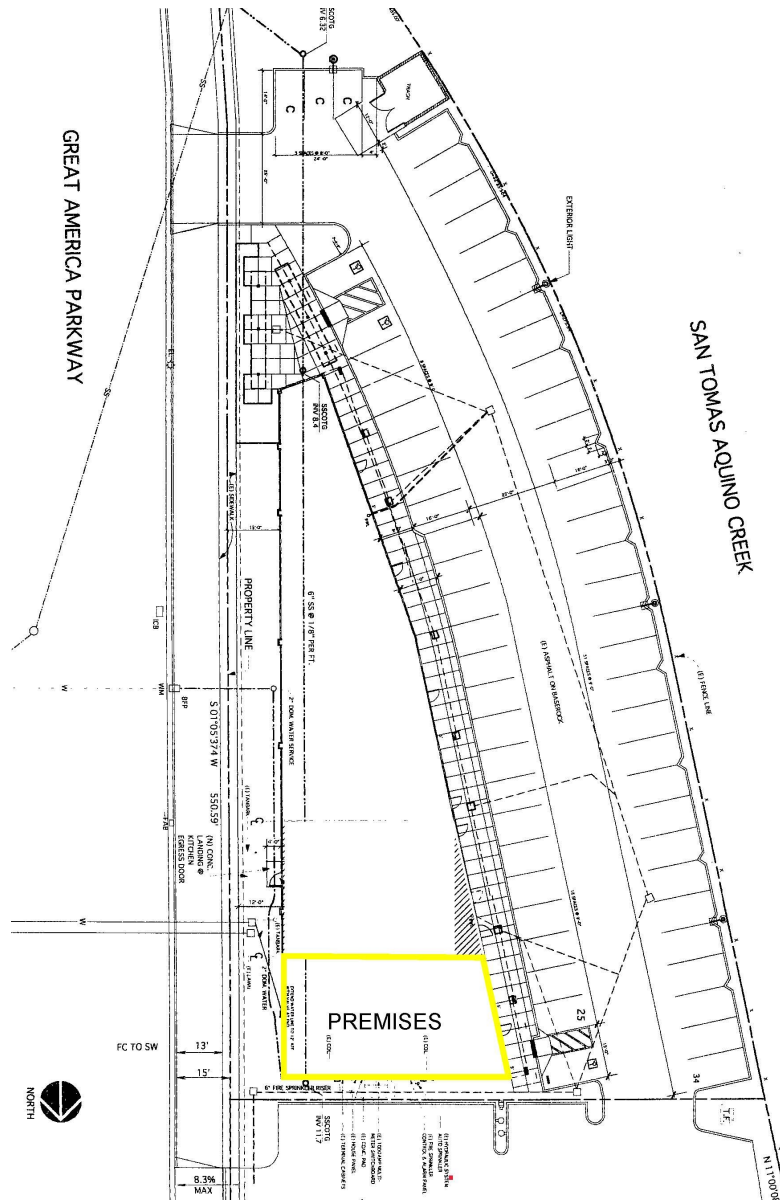
- **FORMER TACO BELL'S RESTAURANT SPACE**
- LOCATED NEAR LEVI'S STADIUM, GREAT AMERICA AMUSEMENT PARK AND SANTA CLARA CONVENTION CENTER
- NEIGHBORING MANY FIRST CLASS TECH COMPANIES ALONG THE GREAT AMERICA PKWY.
- CO-TENANTS WITH **TOGO'S, JOE'S CHINESE, GOMBEI TOFU, GOLDKONDA INDIAN RESTAURANT**
- SIZE OF PREMISES: APPROXIMATELY 2,028 SQ/FT
- PATIO INCLUDED!
- RENT: \$3.25PSF , NNN \$1.75PSF
- A.D.T. APPROXIMATELY **35,000 CARS** DAILY



PROPERTY LOCATION

5350 GREAT AMERICA PKWY, SANTA CLARA, CA

SITE PLAN



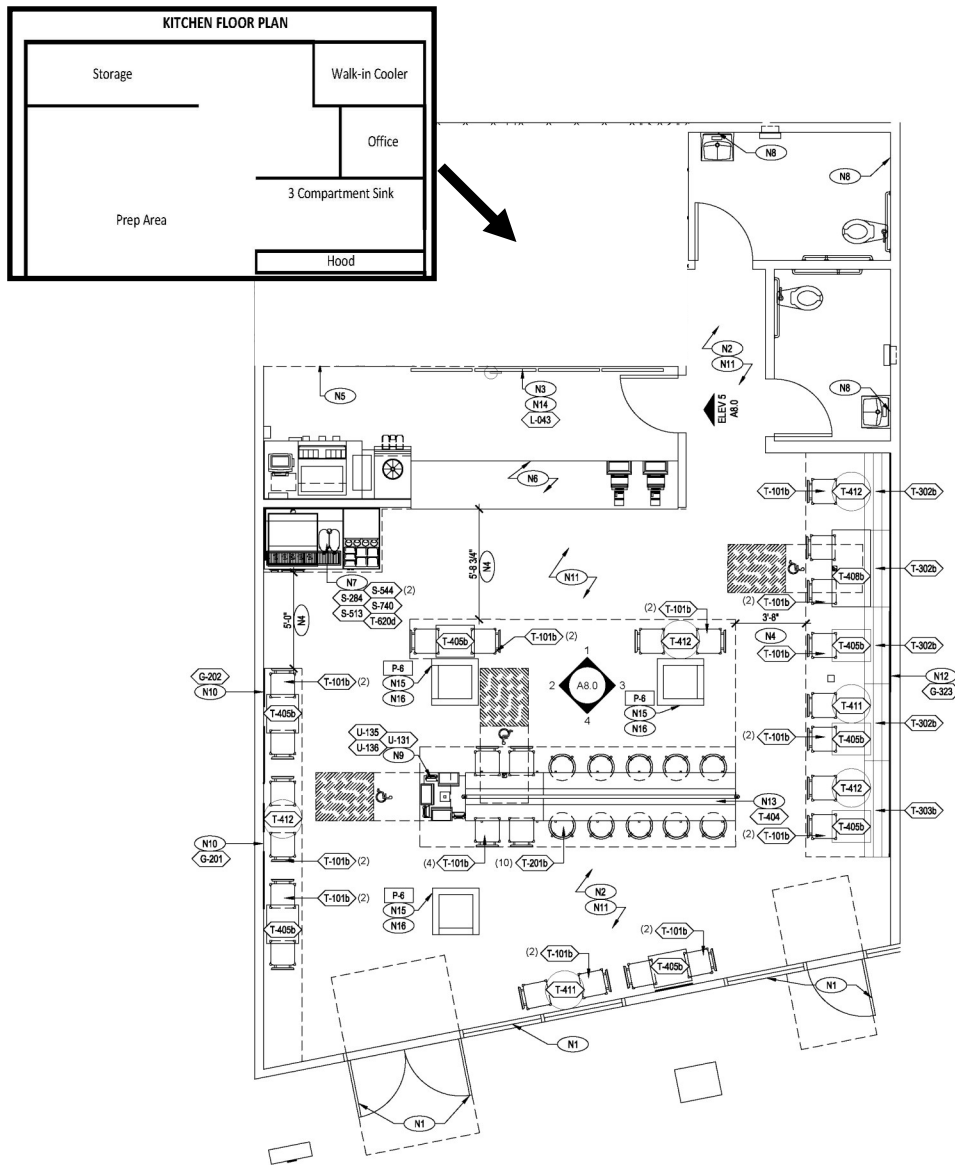
**PACIFIC GATEWAY
PROPERTIES**
158 JACKSON STREET
SAN JOSE, CA 95112
PHONE: (669)271-4225
FAX: (669)-271-4222



PROPERTY LOCATION

5350 GREAT AMERICA PKWY, SANTA CLARA, CA

FLOOR PLAN



**PACIFIC GATEWAY
PROPERTIES**
158 JACKSON STREET
SAN JOSE, CA 95112
PHONE: (669)271-4225
FAX: (669)-271-4222



PROPERTY LOCATION

5350 GREAT AMERICA PKWY, SANTA CLARA, CA

SURROUNDING AREA



**PACIFIC GATEWAY
PROPERTIES**
158 JACKSON STREET
SAN JOSE, CA 95112
PHONE: (669)271-4225
FAX: (669)-271-4222



PROPERTY PHOTOS

5350 GREAT AMERICA PKWY, SANTA CLARA, CA



PHOTO 1

PHOTO 2

PHOTO 3

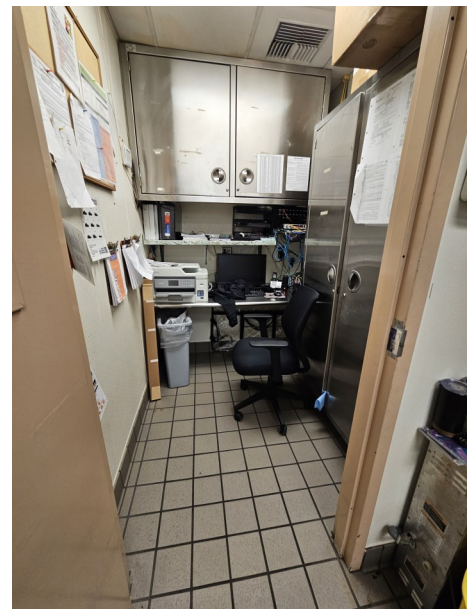


**PACIFIC GATEWAY
PROPERTIES**
158 JACKSON STREET
SAN JOSE, CA 95112
PHONE: (669)271-4225
FAX: (669)-271-4222



INTERIOR PHOTOS

5350 GREAT AMERICA PKWY, SANTA CLARA, CA



**PACIFIC GATEWAY
PROPERTIES**
158 JACKSON STREET
SAN JOSE, CA 95112
PHONE: (669)271-4225
FAX: (669)-271-4222

The information listed above is obtained from sources we believe to be reliable however we accept no responsibility for its correctness.