

129 HAVEMEYER ST
SAVOI LATIN BISTRO
WILLIAMSBURG

BUSINESS SALE



129 HAVEMEYER ST
WILLIAMSBURG

JUSTIN LOSH
(347) 388-4649
JUSTIN@COUNTRYNY.COM

OFFICE
250 MOORE ST, #302
BROOKLYN, NY 11206



PROPERTY DETAILS

 **\$9,850 PER MONTH**
KEY MONEY ASK UPON REQUEST

 **2500 SF RESTAURANT**

 **NEGOTIABLE TERM**

TURN KEY WINE BAR & RESTAURANT SALE

BEER & WINE LICENSE IN PLACE
(FULL LIQUOR LICENSE NOT AVAILABLE)

HEAVY WILLIAMSBURG NIGHTLIFE FOOT
TRAFFIC

1250 SF GROUND FLOOR AND 1250 SF
BASEMENT- BOTH FLOORS HAVE BARS
AND KITCHEN EQUIPMENT IN PLACE

NEWLY RENOVATED SPACE

FULLY VENTED KITCHEN WITH GAS,
WALK-IN COOLERS, WRAPAROUND BAR

RETAIL FRONT AND BACK OF HOUSE
STAIRCASE TO LOWER LEVEL BAR SPACE

KITCHEN / BAR EQUIPMENT AND
FURNITURE INCLUDED IN SALE

129 HAVEMEYER ST
WILLIAMSBURG

JUSTIN LOSH
(347) 388-4649
JUSTIN@COUNTRYNY.COM

OFFICE
250 MOORE ST, #302
BROOKLYN, NY 11206



GROUND FLOOR



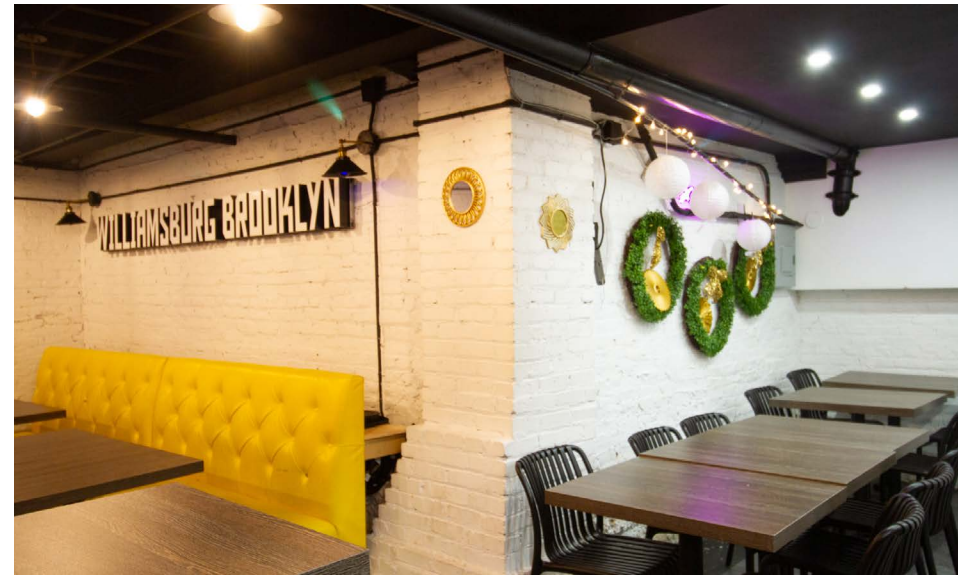
129 HAVEMEYER ST
WILLIAMSBURG

JUSTIN LOSH
(347) 388-4649
JUSTIN@COUNTRYNY.COM

OFFICE
250 MOORE ST, #302
BROOKLYN, NY 11206



LOWER LEVEL



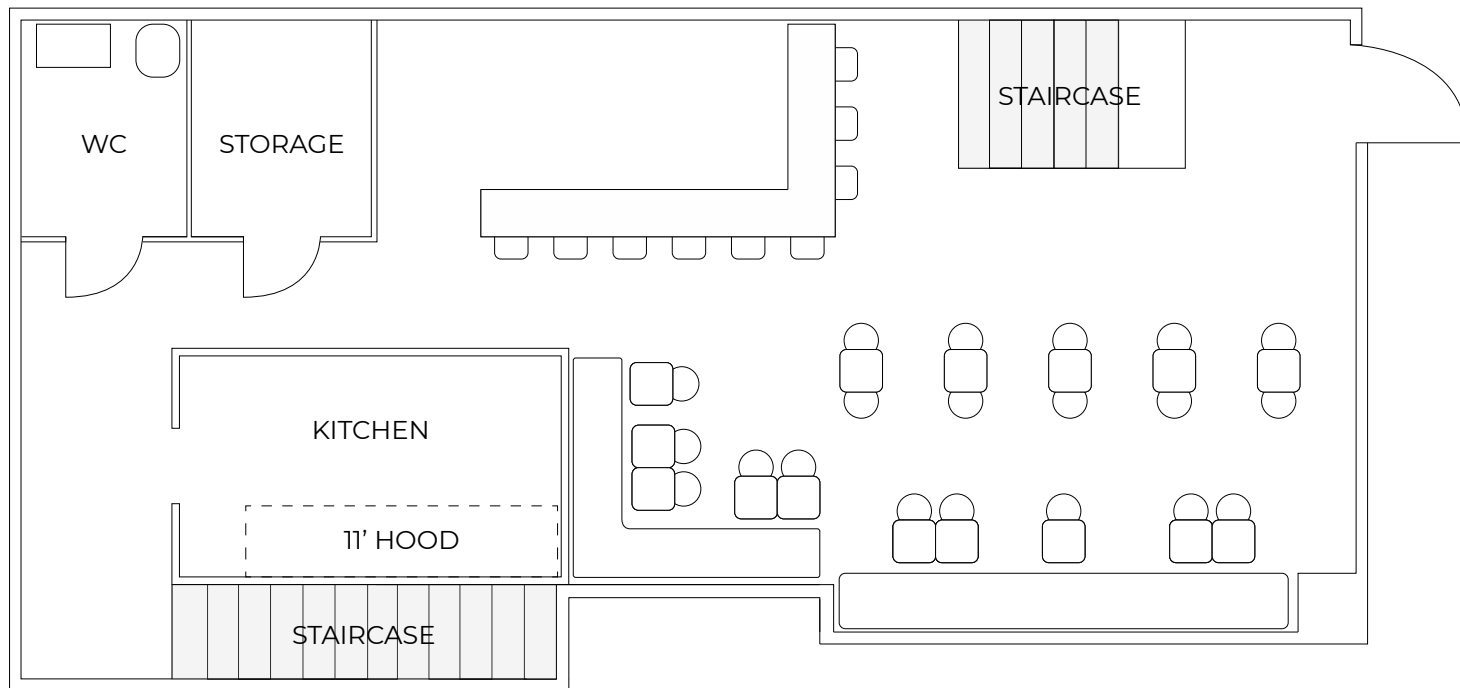
129 HAVEMEYER ST
WILLIAMSBURG

JUSTIN LOSH
(347) 388-4649
JUSTIN@COUNTRYNY.COM

OFFICE
250 MOORE ST, #302
BROOKLYN, NY 11206



GROUND FLOOR PLAN



11'10" CEILING HEIGHT
DIMENSIONS ARE ESTIMATED

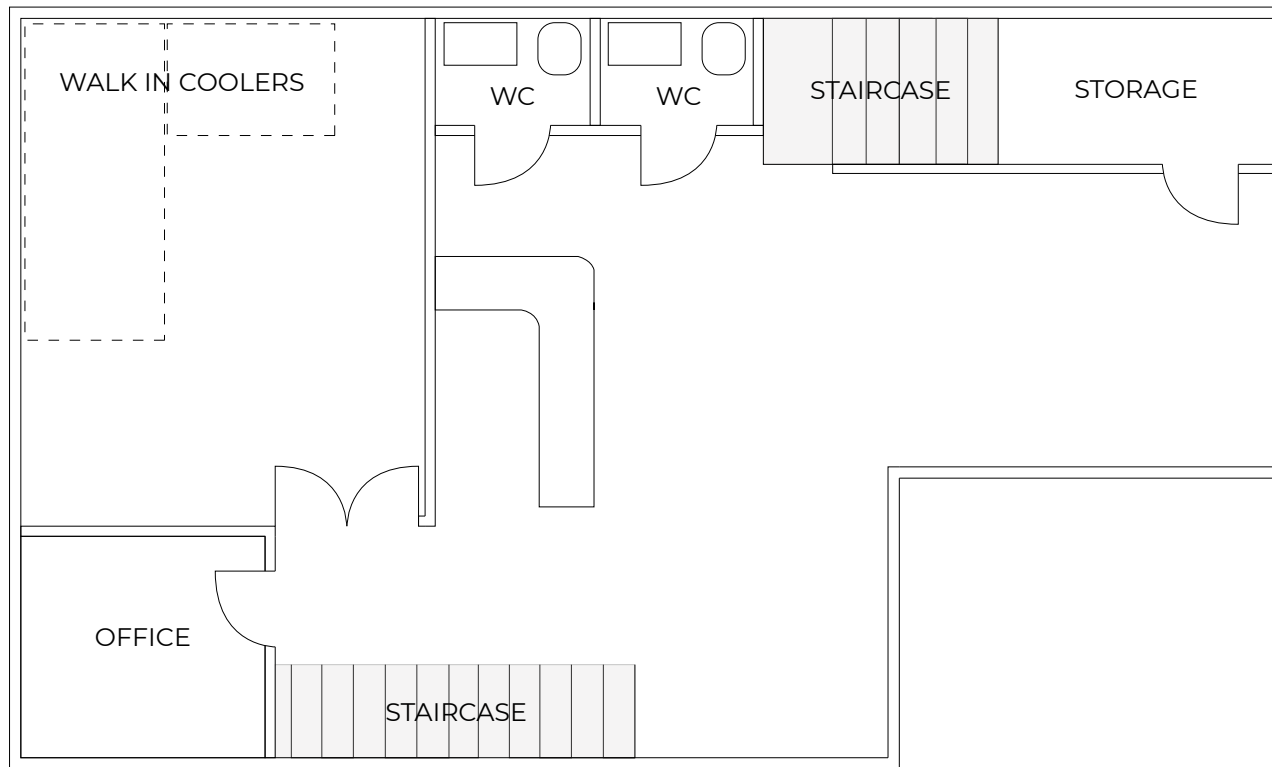
129 HAVEMEYER ST
WILLIAMSBURG

JUSTIN LOSH
(347) 388-4649
JUSTIN@COUNTRYNY.COM

OFFICE
250 MOORE ST, #302
BROOKLYN, NY 11206



BASEMENT FLOOR PLAN



9'6" CEILING HEIGHT
DIMENSIONS ARE ESTIMATED

129 HAVEMEYER ST
WILLIAMSBURG



JUSTIN LOSH

(347) 388-4649

JUSTIN@COUNTERNY.COM



OFFICE

250 MOORE ST, #302

BROOKLYN, NY 11206



SAVOI LATIN BISTRO EQUIPMENT LIST

Copper Beech Range with 6 Gas Burners

Norlake Walk In Cooler (x2)

Atosa Two Door Reach In Worktop Refrigerator

Leader Two Door Reach In Worktop Refrigerator

Spartan Undercounter Refrigerator (x2)

Undercounter 2-Door Refrigerator

Universal 2-Drawer Cooler

Blodgett Convection Oven

Ice Machine w/ Bin

Caldine Ice Machine

Industrial Dishwasher

Gas Countertop Grill

Cookline Gas Griddle

Vulcan Gas Fryer

Drop Ice Bin

VEVOR Margarita Machine 2 Tank (x2)

Two Compartment Bar Sink (x2)

L&JNY Wall Mounted Hand Sink (x2)

L&JNY 3 Compartment Sink

Toast POS (x3)

Various Chairs and Tables

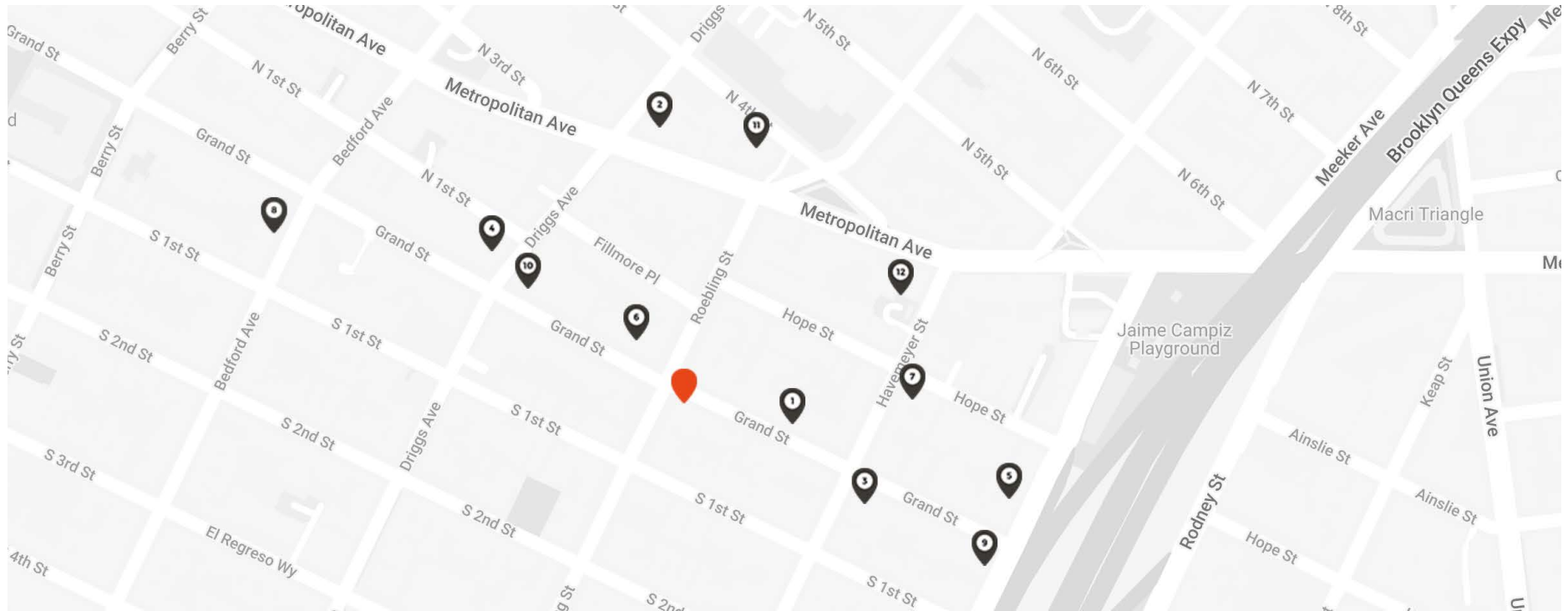
Various Storage, Dishware and Cooking Equipment

Speaker System

129 HAVEMEYER ST
WILLIAMSBURG

JUSTIN LOSH
(347) 388-4649
JUSTIN@COUNTERNY.COM

OFFICE
250 MOORE ST, #302
BROOKLYN, NY 11206



NEIGHBORS

- | | |
|----------------------------|-------------------------|
| 1 - THE FOUR HORSEMEN | 7 - RECETTE |
| 2 - THE BUTCHER'S DAUGHTER | 8 - MAISON PREMIERE |
| 3 - LEO PIZZA | 9 - EMMY SQUARED |
| 4 - WILLIAMSBURG CINEMA | 10 - BEATS KARAOKE CAFE |
| 5 - GERTIE | 11 - GHOST WILLIAMSBURG |
| 6 - CAFE BUREAU | 12 - FETTE SAU |

DEMOGRAPHICS

(1MI/3MI)
POPULATION - 156,600 / 1,354,265
AVERAGE AGE - 33.7 / 35.7
AVERAGE HH INCOME -
\$115,674 / \$122,917

TRANSPORT

L TRAIN: BEDFORD ST
AVERAGE DAILY RIDERS
WEEKDAY - 25,158
WEEKEND - 26,623