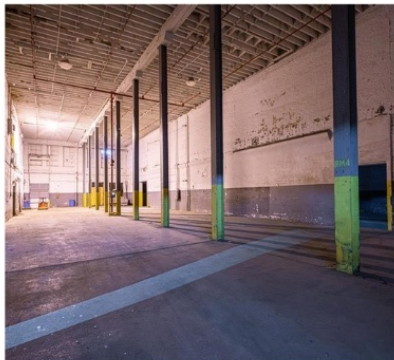


DOWNTOWN SPACE

**BERKSHIRE
HATHAWAY**
HOMESERVICES
STEIN & SUMMERS
REAL ESTATE

COMMERCIAL



202 Main Street,
St. Joseph, MO 64501

Industrial building with multiple stories consisting of six adjoining buildings with 5 docks. Building 6 contains 22,581 SF with 30' clear height and a rail door that is currently inactive. Building 5 is constructed of 21" brick blocks, has a concrete basement and all concrete floors. Each room is insulated with 4-6" interior panels. Buildings 1-4 have concrete floors on the 1st and 2nd floors while the 3rd floors are constructed out of factory maple. The second floor in building 4 has been removed to allow for taller clear heights.