

# 32 GANSEVOORT STREET

**FULL-FLOOR OFFICE  
LOFT IN THE HEART OF THE  
MEATPACKING DISTRICT.**



# 32 GANSEVOORT STREET 4TH FLOOR OFFICE

## Key Details

Size: +/- 2,150 SF  
Possession: Immediate  
Pricing: Contact for details

## Space Highlights

- Full-floor walk-up office featuring three glass-enclosed rooms, one restroom, a wet pantry, and two private entrances
- Bright and welcoming interiors with high ceilings, large windows on four exposures, premium finishes throughout, and expansive views of the Meatpacking District
- Directly across from Gansevoort Plaza, in the heart of Meatpacking Square and surrounded by top-tier dining, fashion, and lifestyle brands
- Ground-floor tenant: Sweetgreen

## Key Neighbors

HIGH LINE

sweetgreen

BANGKOK  
SUPPER  
CLUB

Theory

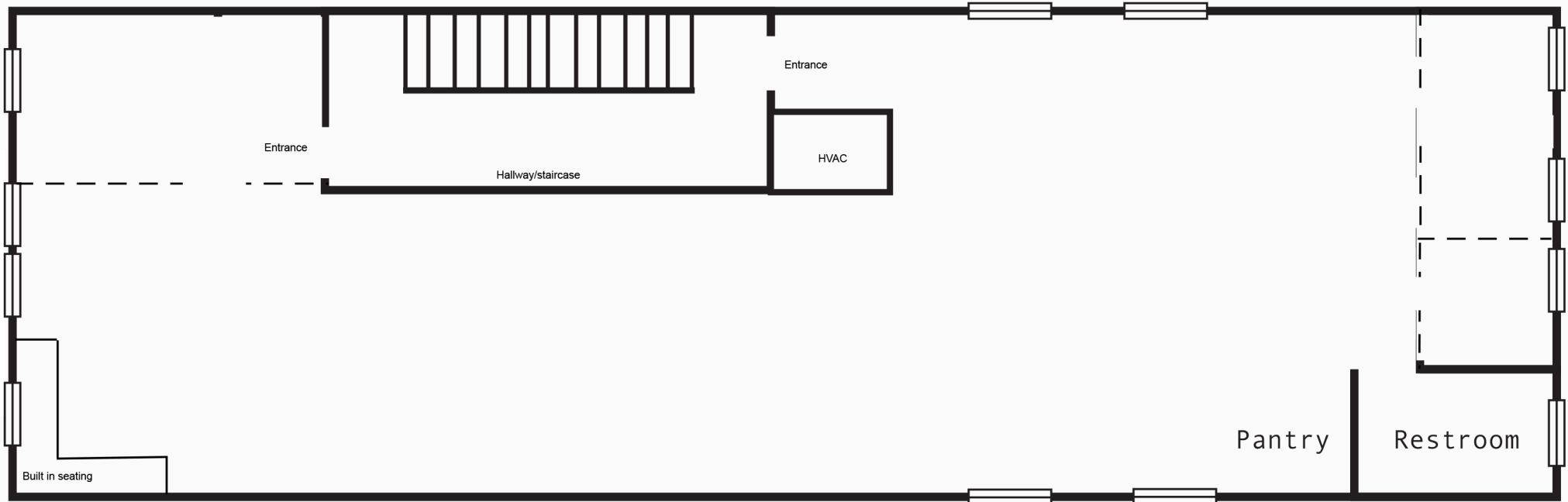
RH GUESTHOUSE







## 4th Floor: ±2,150 SF





## CONTACT US

For questions or for more information about this property, please contact a member of the Capricorn Retail Advisors team.

**Ryan Schimel**  
Senior Managing Director  
rschimel@capricornre.com

**Jason D. Richter**  
Managing Principal  
jrichter@capricornre.com

More from Capricorn Retail Advisors  
[www.capricornre.com](http://www.capricornre.com)