

COMMERCIAL SPACE FOR LEASE

WEST END PLAZA

1049-1073 WEST BROAD ST, FALLS CHURCH, VA 22046

AVAILABILITY:

UNIT	S.F.
1069B U211-213	1,505
1073 U208	675
1057 U214	990
1073 U203	361

DEMOGRAPHICS:

	1 MILE	3 MILES	5 MILES
TOTAL POPULATION	16,514	160,607	410,667
AVERAGE HH INCOME	\$132,534	\$117,893	\$114,052

OVERVIEW:

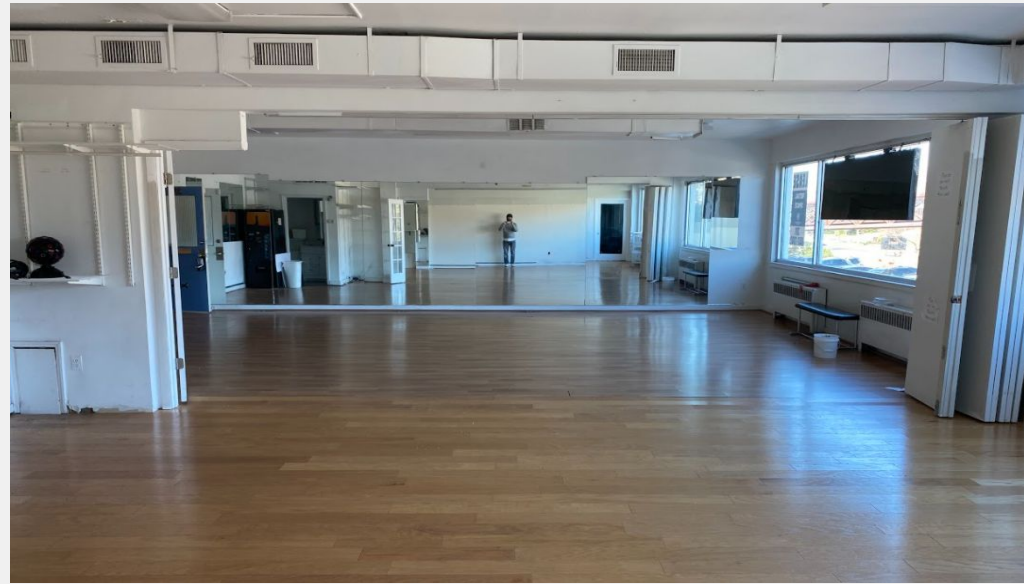
This mixed-use property has retail on the ground level and office space on the second floor, with lots of natural lighting (no elevator). This plaza has great exposure from Rt-7 (W Broad Street) and N West Street (33,952 vehicles per day) and is directly adjacent to the Old Dominion bike trail. A strong tenant mix consists of: Allstate Insurance, UPS, Robeks Smoothies, 10 Pizza, Ubreakifix, Value Vet, Lantern House Vietnamese, Local Thrift, among other great co-tenants. Act now, these beautiful office spaces in this great location will not last long. 24-hour access and ample parking for yourself and clients. Move your successful business to busy West End Plaza for great visibility, signage and location.

GREAT STREET VISIBILITY:



GREAT LOCATION





COMMERCIAL SPACE
FOR LEASE

WEST END PLAZA
1049-1073 WEST BROAD ST, FALLS CHURCH, VA 22046

WWW.WOODMONT.US

DAVID SMITH

CELL: (202) 258-3175 | OFFICE: (301) 652-2303
Dsmith@woodmont.us | 4919 Bethesda Ave Suite 200, Bethesda, MD





COMMERCIAL SPACE
FOR LEASE

WEST END PLAZA
1049-1073 WEST BROAD ST, FALLS CHURCH, VA 22046



CLOSE-IN AERIAL:



COMMERCIAL SPACE
FOR LEASE

WEST END PLAZA
1049-1073 WEST BROAD ST, FALLS CHURCH, VA 22046

WWW.WOODMONT.US

DAVID SMITH

CELL: (202) 258-3175 | OFFICE: (301) 652-2302
Dsmith@woodmont.us | 4919 Bethesda Ave Suite 200, Bethesda, MD

