



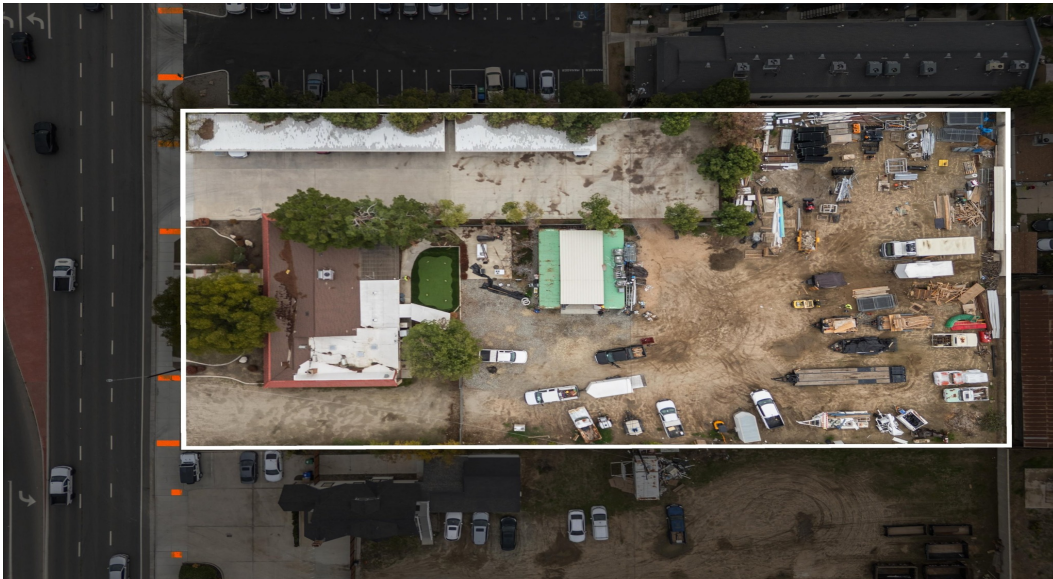
9831 Rosedale Hwy, Bakersfield CA

Full Commercial Brochure

Desirée Caywood | Commercial Real Estate

Property Highlights

- 2,782 SF Building
- 1.12 Acre Lot
- C-2 Zoning
- Fenced yard + dual gated access
- Covered parking
- Multiple private offices + meeting room
- Full kitchen + upgraded bathrooms
- Prime visibility on Rosedale Hwy

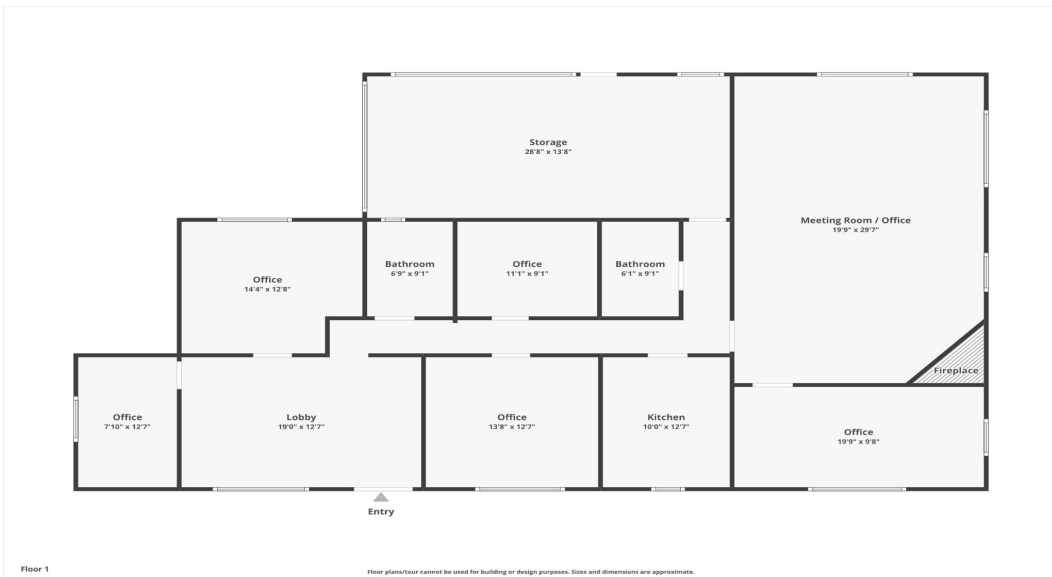


Interior Features





Aerial View & Floor Plan



Contact:
Desirée Caywood
Call/Text: 661-699-7273
Website: www.realtordes.com

Watson Realty