

FOR SALE

10701 Lanham Severn Rd.
Glenn Dale, MD 20769



PROJECT DESCRIPTION

- Ideal for Contractor
- Zoned CS
- 0.73 acres
- Includes Existing Buildings
- Plenty of Parking. Owner currently leases a small parcel in the back for add'l parking & storage, this is currently being leased for \$1350/mo and new owner will need to secure a new lease.



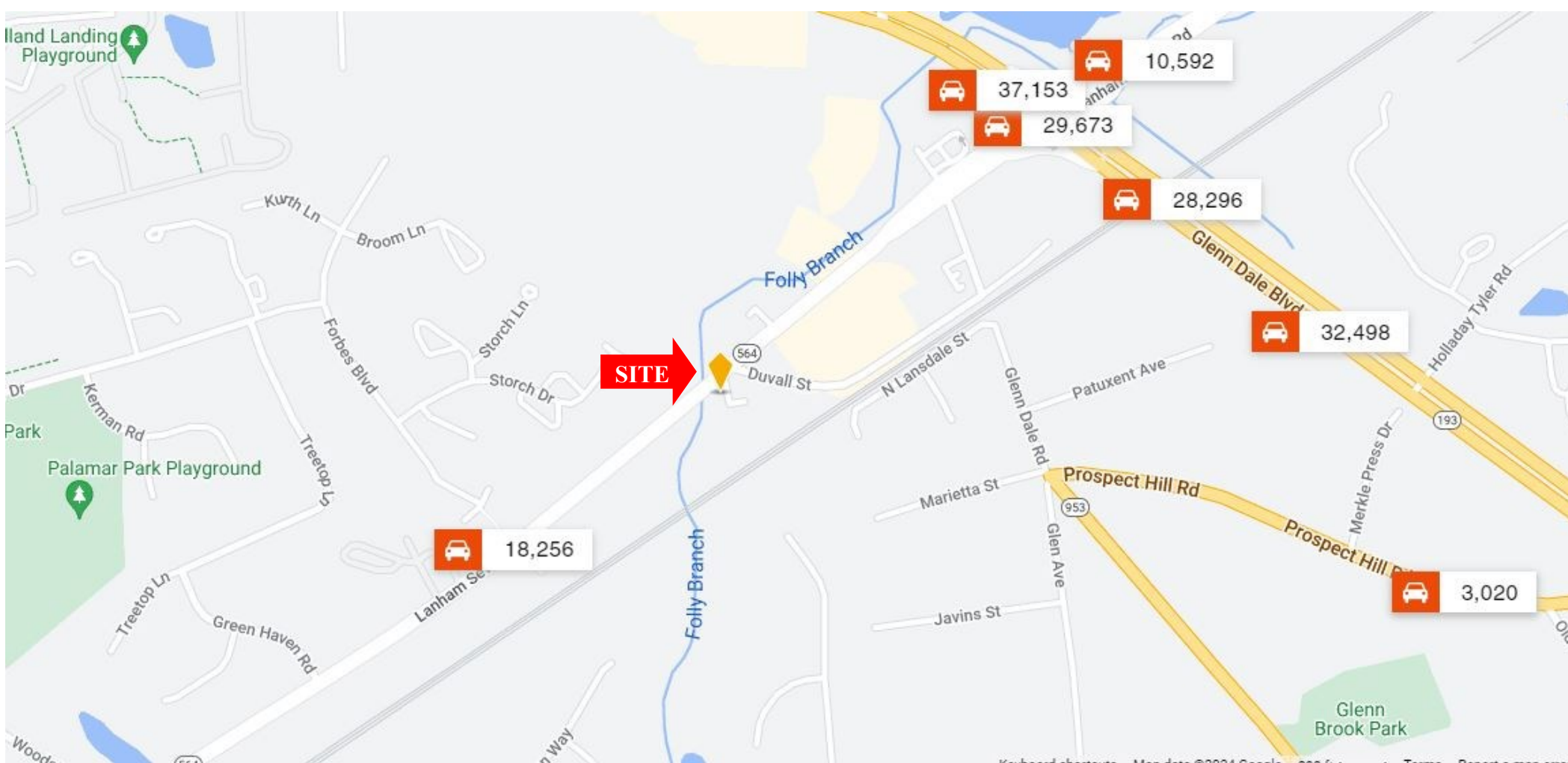
[For more information, please contact](#)

Andy MacPherson
301-509-5169 Cell
andy@wfchesley.com



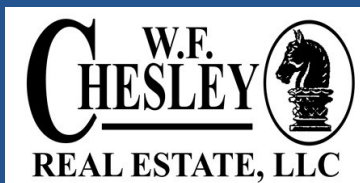
FOR SALE

10701 Lanham Severn Rd.
Glenn Dale, MD 20769



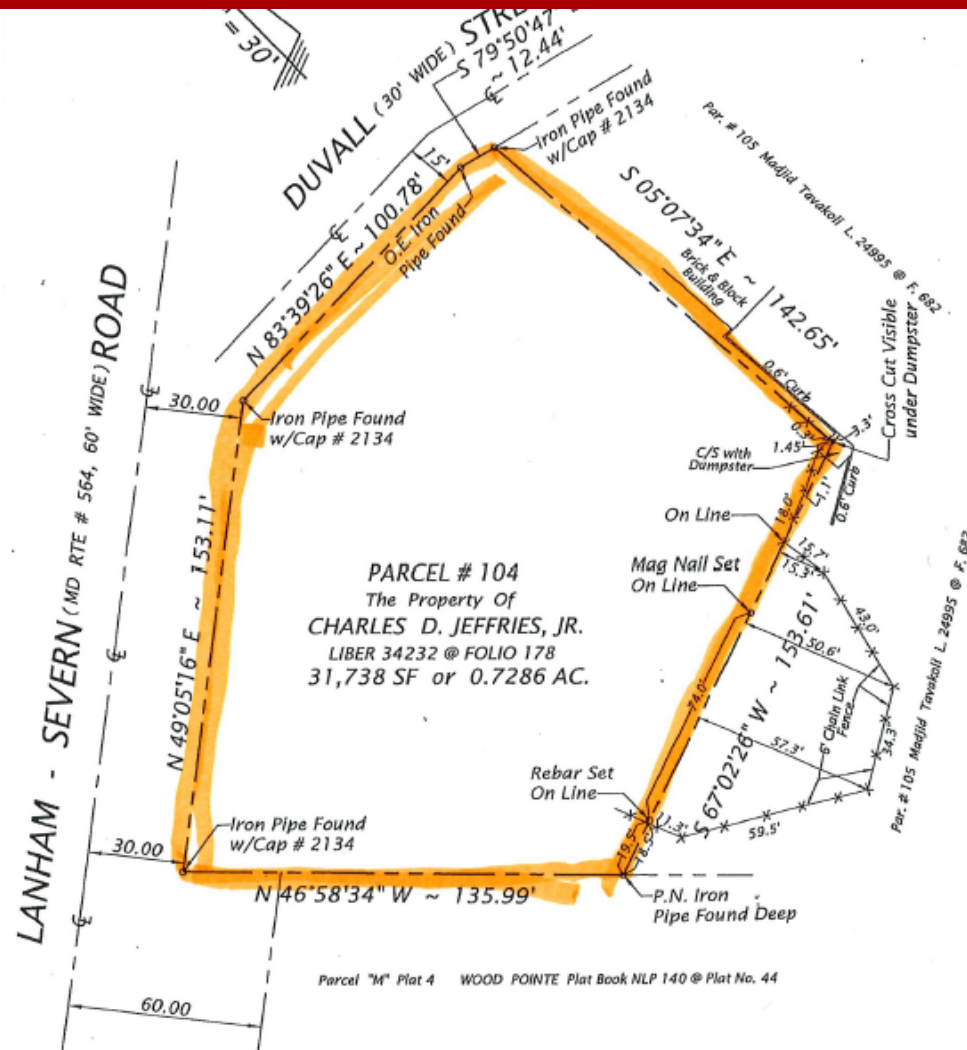
[For more information, please contact](#)

Andy MacPherson
301-509-5169 Cell
andy@wfchesley.com



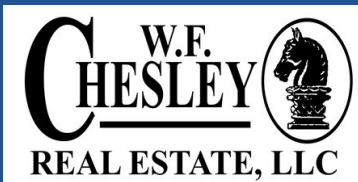
FOR SALE

10701 Lanham Severn Rd.
Glenn Dale, MD 20769



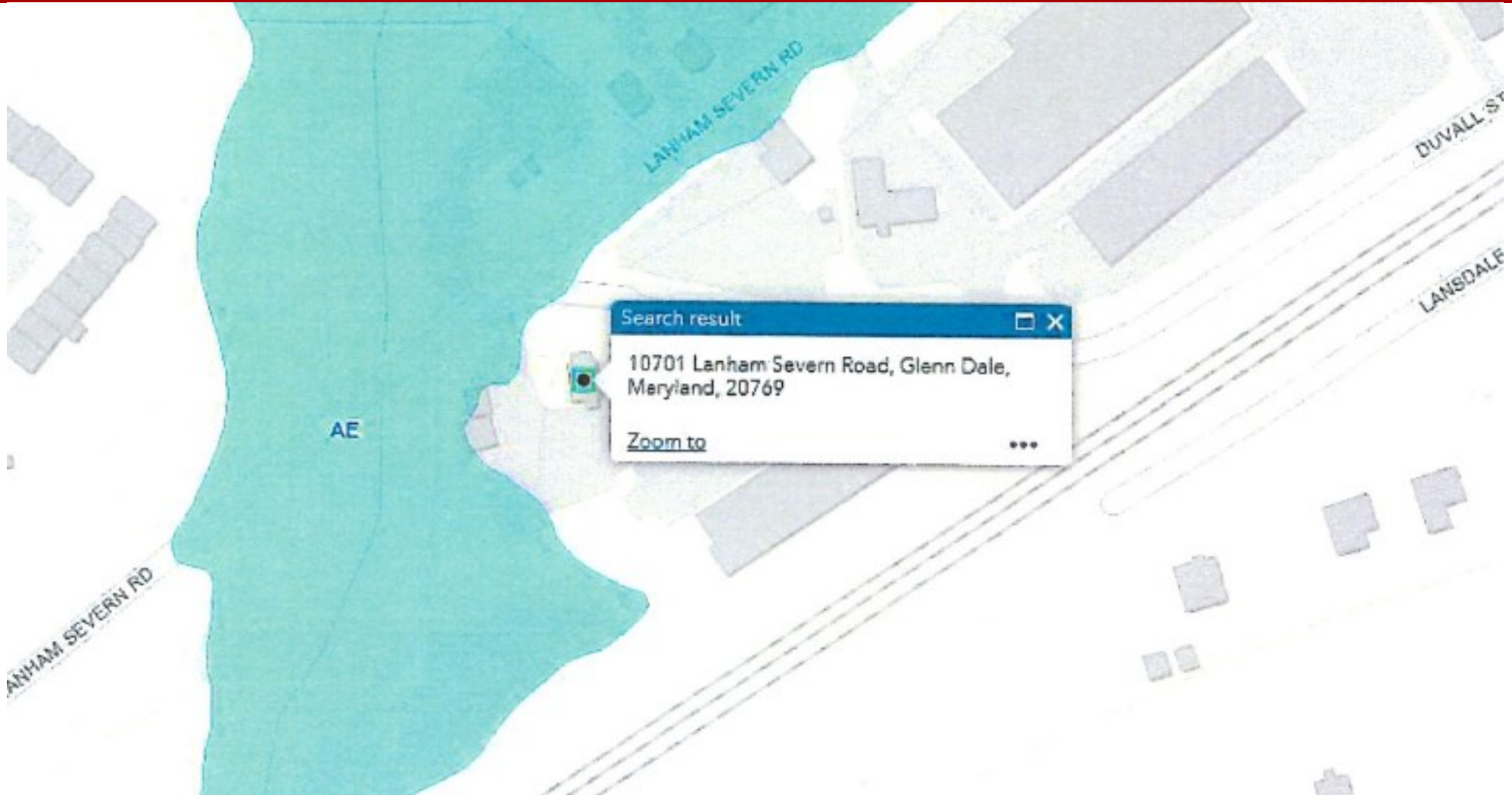
For more information, please contact

Andy MacPherson
301-509-5169 Cell
andy@wfchesley.com



FOR SALE

10701 Lanham Severn Rd.
Glenn Dale, MD 20769



[For more information, please contact](#)

Andy MacPherson
301-509-5169 Cell
andy@wfchesley.com

