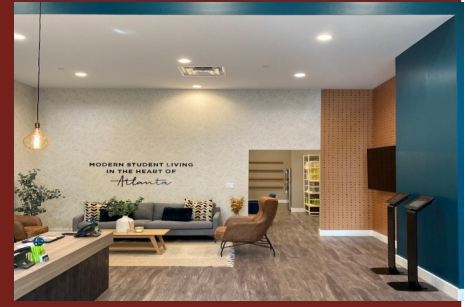


# AVAILABLE FOR LEASE

## Downtown Street Level Retail Space



### 6 Park Place, Atlanta, GA 30303

**RATE:** \$30.00/SF NNN

**OPEX:** \$4.75/SF

**SIZE:** 1,600 RSF

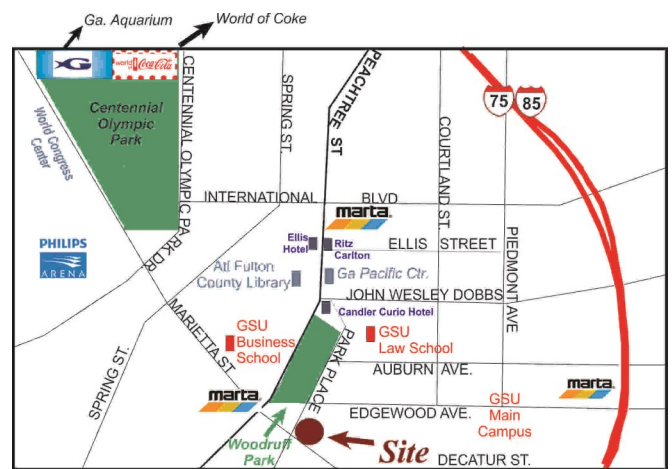
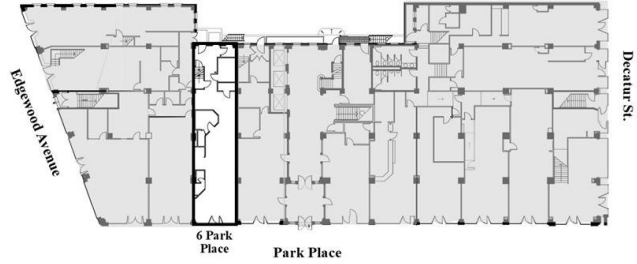
- Inline Retail Space Formerly a Student Housing Leasing Office
- Street Level Retail Access and Exposure
- Adjacent to GA State University / Woodruff Park / Five Points
- MARTA Rail & Street Car Access
- Located in the heart of the Opportunity Zone. For more information go to <https://www.investatlanta.com/business/bonds-incentives/opportunity-zones/>
- Building on the National Register of Historic Places
- Currently No Grease Trap or Vent Hood in Place

**Dave Smith**

404.869.2605

dave@joelandgranot.com

For complete details, please visit: [www.joelandgranot.com](http://www.joelandgranot.com)



633 Antone St NW, Atlanta, GA 30318  
(ph) 404.869.2600 | (fax) 404.869.2601



The information was obtained from sources we assume are reliable. We do not doubt its accuracy, however we do not guarantee it. No liability is assumed for errors and omissions. Information is subject to changes and withdrawal without notice.