



FOR SALE

13806 S Inglewood Ave, Hawthorne, CA 90250

5,671 SF Custom HQ Office Building **\$3,750,000**



[CLICK TO VIEW PHOTOS](#)

FEATURES

Available Square Footage	5,671
Land Square Footage	9,800
Office Square Footage	4,827
Parking	10-14
Dimensions	Verify
Loading	1 GL Door (17.5' x 8.5')
Minimum Ceiling Clearance	12'
Power	400A, 120/240 Volts, 3P, 4W
Sprinkler System	1.00:1,000 SF
Year Built	2008
Construction	Tilt-Up
Zoning	C-3

HIGHLIGHTS

- Custom HQ Office Built in 2008
- Free Standing Building with Private Parking Area
- 844 SF of Storage Space or Garage Parking (4 spaces)
- 4.9 Miles to SOFI Stadium, 4.2 Miles to Beach

The information above has been obtained from sources believed reliable. While we do not doubt its accuracy, we have not verified it and make no guarantee, warranty or representation about it. It is your responsibility to independently confirm its accuracy and completeness. Any projections, options, assumptions or estimates used are for example only and do not represent the current or future performance of the property. The value of this transaction to you depends on tax and other factors which should be evaluated by your tax, financial and legal advisors. You and your advisors should conduct a careful, independent investigation of the property to determine to your satisfaction the suitability of the property for your needs.

ACCESSIBILITY

MILES TO	
Los Angeles International Airport (LAX)	5.3
Long Beach Airport	18.2
Los Angeles & Long Beach Ports (both)	18.8
IMMEDIATE ACCESS TO	
405, 105, and 110 Freeways	



ED WHITTEMORE
 Cal DRE Lic# 00935219
 310.436.6482
 ewhittemore@lareminc.com



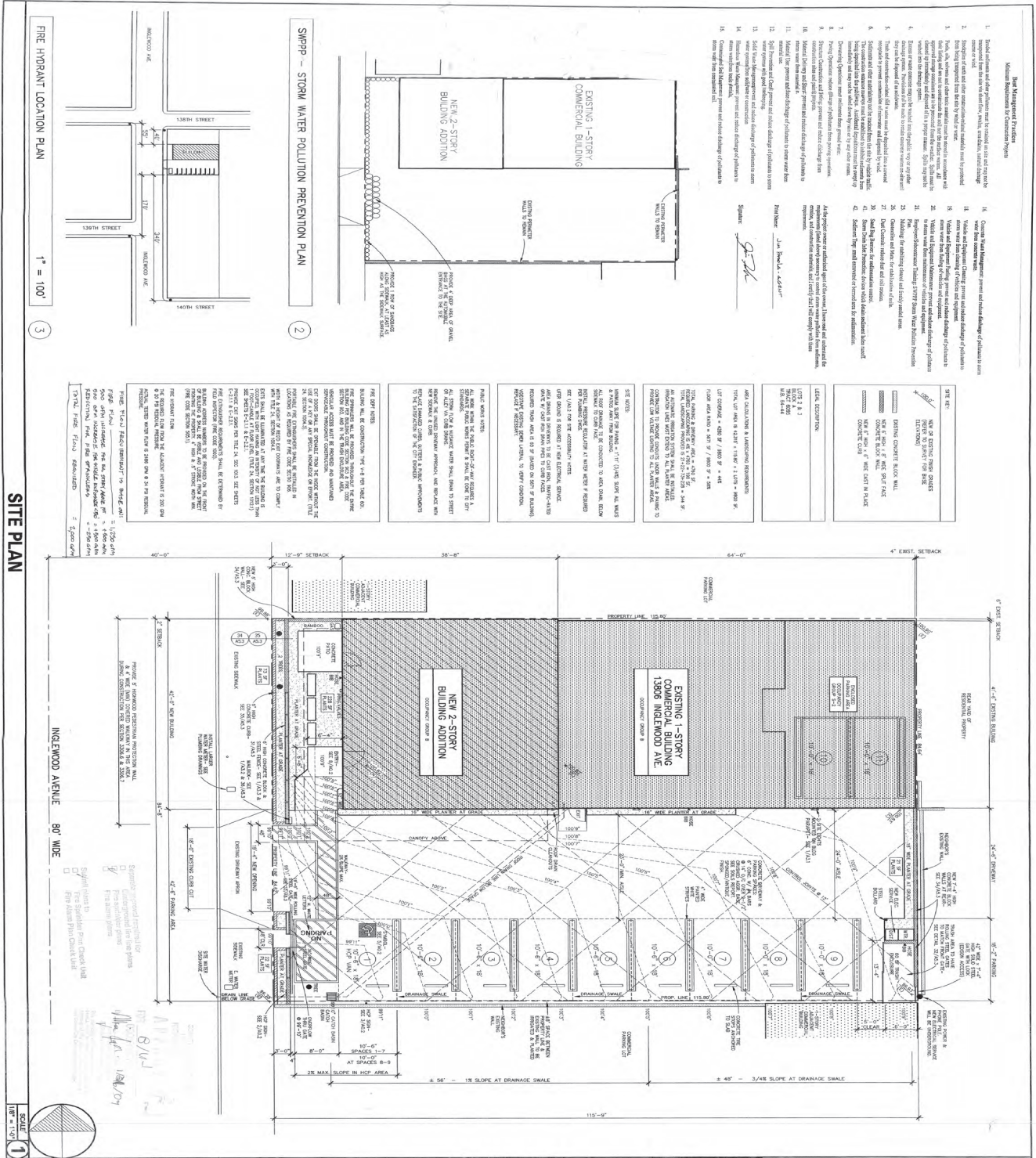
MATT GINOCCHIO
 Cal DRE Lic# 01777208
 310.436.6483
 mginocchio@lareminc.com



Dimitri Petrakis
 Cal DRE Lic# 02208946
 310.620.8770
 dpetrakis@lareminc.com

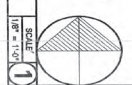
310.719.1585 // www.lareminc.com
 165 Savarona Way, Carson, California 90746
TRUSTED INDUSTRIAL REAL ESTATE SOLUTIONS SINCE 1993

Site Plan



- #### Itemized Description
1. Building footprint of the proposed 2-story addition to the existing 1-story commercial building.
 2. Existing 1-story commercial building footprint.
 3. New 2-story building addition footprint.
 4. Existing parking area.
 5. Proposed parking area.
 6. Proposed site improvements including landscaping and site grading.
 7. Proposed site improvements including landscaping and site grading.
 8. Proposed site improvements including landscaping and site grading.
 9. Proposed site improvements including landscaping and site grading.
 10. Proposed site improvements including landscaping and site grading.
 11. Proposed site improvements including landscaping and site grading.
 12. Proposed site improvements including landscaping and site grading.
 13. Proposed site improvements including landscaping and site grading.
 14. Proposed site improvements including landscaping and site grading.
 15. Proposed site improvements including landscaping and site grading.
 16. Proposed site improvements including landscaping and site grading.

GENERAL NOTES	EXISTING 1-STORY COMMERCIAL BUILDING	NEW 2-STORY BUILDING ADDITION
1. ALL DIMENSIONS ARE IN FEET AND INCHES UNLESS OTHERWISE NOTED.	1. ALL DIMENSIONS ARE IN FEET AND INCHES UNLESS OTHERWISE NOTED.	1. ALL DIMENSIONS ARE IN FEET AND INCHES UNLESS OTHERWISE NOTED.
2. THE PROPOSED 2-STORY ADDITION SHALL BE CONSTRUCTED IN ACCORDANCE WITH THE CITY OF HAWTHORNE ZONING ORDINANCES.	2. THE PROPOSED 2-STORY ADDITION SHALL BE CONSTRUCTED IN ACCORDANCE WITH THE CITY OF HAWTHORNE ZONING ORDINANCES.	2. THE PROPOSED 2-STORY ADDITION SHALL BE CONSTRUCTED IN ACCORDANCE WITH THE CITY OF HAWTHORNE ZONING ORDINANCES.
3. THE PROPOSED 2-STORY ADDITION SHALL BE CONSTRUCTED WITH A MINIMUM OF 10% OPEN SPACE.	3. THE PROPOSED 2-STORY ADDITION SHALL BE CONSTRUCTED WITH A MINIMUM OF 10% OPEN SPACE.	3. THE PROPOSED 2-STORY ADDITION SHALL BE CONSTRUCTED WITH A MINIMUM OF 10% OPEN SPACE.
4. THE PROPOSED 2-STORY ADDITION SHALL BE CONSTRUCTED WITH A MINIMUM OF 10% OPEN SPACE.	4. THE PROPOSED 2-STORY ADDITION SHALL BE CONSTRUCTED WITH A MINIMUM OF 10% OPEN SPACE.	4. THE PROPOSED 2-STORY ADDITION SHALL BE CONSTRUCTED WITH A MINIMUM OF 10% OPEN SPACE.



The information above has been obtained from sources believed reliable. While we do not doubt its accuracy, we have not verified it and make no guarantee, warranty or representation about it. It is your responsibility to independently confirm its accuracy and completeness. Any projections, options, assumptions or estimates used are for example only and do not represent the current or future performance of the property. The value of this transaction to you depends on tax and other factors which should be evaluated by your tax, financial and legal advisors. You and your advisors should conduct a careful, independent investigation of the property to determine to your satisfaction the suitability of the property for your needs.

310.719.1585 // www.lareminc.com
 165 Savarona Way, Carson, California 90746
TRUSTED INDUSTRIAL REAL ESTATE SOLUTIONS SINCE 1993

Site Plan



The information above has been obtained from sources believed reliable. While we do not doubt its accuracy, we have not verified it and make no guarantee, warranty or representation about it. It is your responsibility to independently confirm its accuracy and completeness. Any projections, options, assumptions or estimates used are for example only and do not represent the current or future performance of the property. The value of this transaction to you depends on tax and other factors which should be evaluated by your tax, financial and legal advisors. You and your advisors should conduct a careful, independent investigation of the property to determine to your satisfaction the suitability of the property for your needs.

310.719.1585 // www.lareminc.com
 165 Savarona Way, Carson, California 90746

TRUSTED INDUSTRIAL REAL ESTATE SOLUTIONS SINCE 1993