



THE
TRAVIS BUILDING

205 W 9TH STREET, AUSTIN, TX 78701

For leasing, email michaelm@vbaustin.com or call 512-476-2061.

BUILDING OVERVIEW

The Travis Building was built in 1928 and later added to in 1946 by the Steck Printing Company. The building served as their main headquarters and printing facility up until the 1960's. The building encompasses design elements from the Art Deco era which can still be seen throughout. The Travis Building has been owned and managed by a local Austin family since 1977 and has since served as headquarters for government offices of Travis County, City of Austin Utilities, attorneys, campaigns, lobbying groups, data storage facilities, and most recently, technology startups.

89,148 SF
TOTAL BUILDING SF

PARKING

CASE BY CASE BASIS DEPENDING
ON AVAILABILITY

100+
WALKABLE AMENITIES



AMPLE WALKABLE AMENITIES

The Travis Building is just one block from the Texas State Capitol and only a ten-minute walk from the biking and hiking trails around Austin's Town Lake. World-famous 6th Street, lined with music venues, is right around the corner. When it's time to unwind or celebrate a win, tenants can grab a bite at Ranch 616, stroll the grounds of the Capitol, or sip a swanky cocktail at the Roosevelt Room. Plus, the building is conveniently located directly on the main North-South Capital Metro Bus routes through Downtown Austin, including the popular MetroRapid route, making commuting a breeze.



EAT & DRINK

1. Perry's Steakhouse
2. Roaring Fork
3. The Driskill Bar
4. Garage
5. 7 Eleven
6. Comedor
7. Gloria's Latin Cuisine
8. Cava
9. Maiko
10. Starbucks
11. Wu Chow
12. Voodoo Doughnut
13. Caffe Medici
14. Ranch 616

LIFESTYLE & ENTERTAINMENT

15. The Contemporary Austin
16. Bank of America
17. Gold's Gym
18. Prosperity Bank
19. United States Postal Service
20. Republic Square
21. The Paramount Theatre
22. CVS

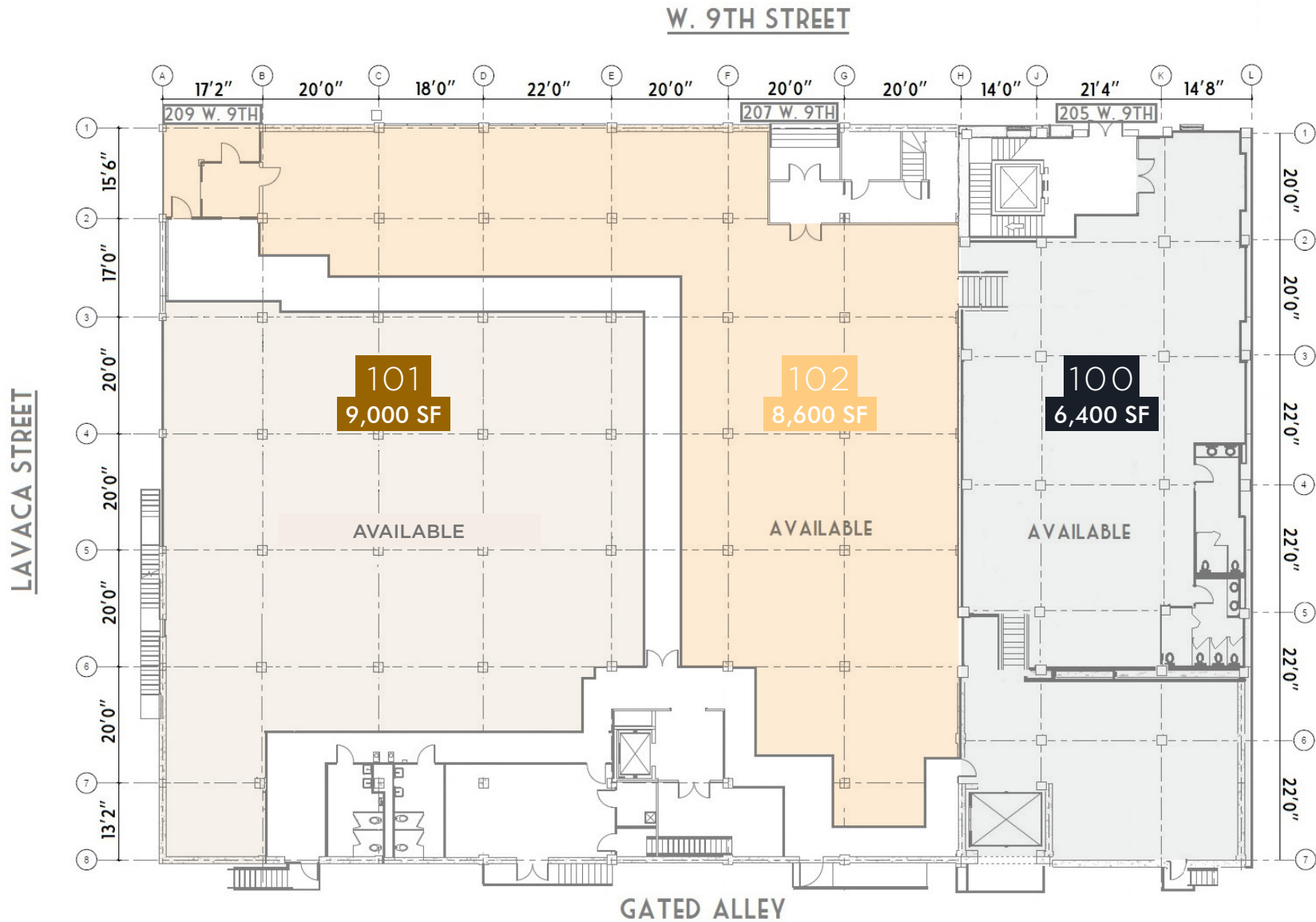
TRANSPORTATION

Commuter Rail, Capital MetroRail

4th Street Downtown CapMetro Rail	0.8 mi
Austin History Center Bus Station	0.2 mi

FLOOR PLANS

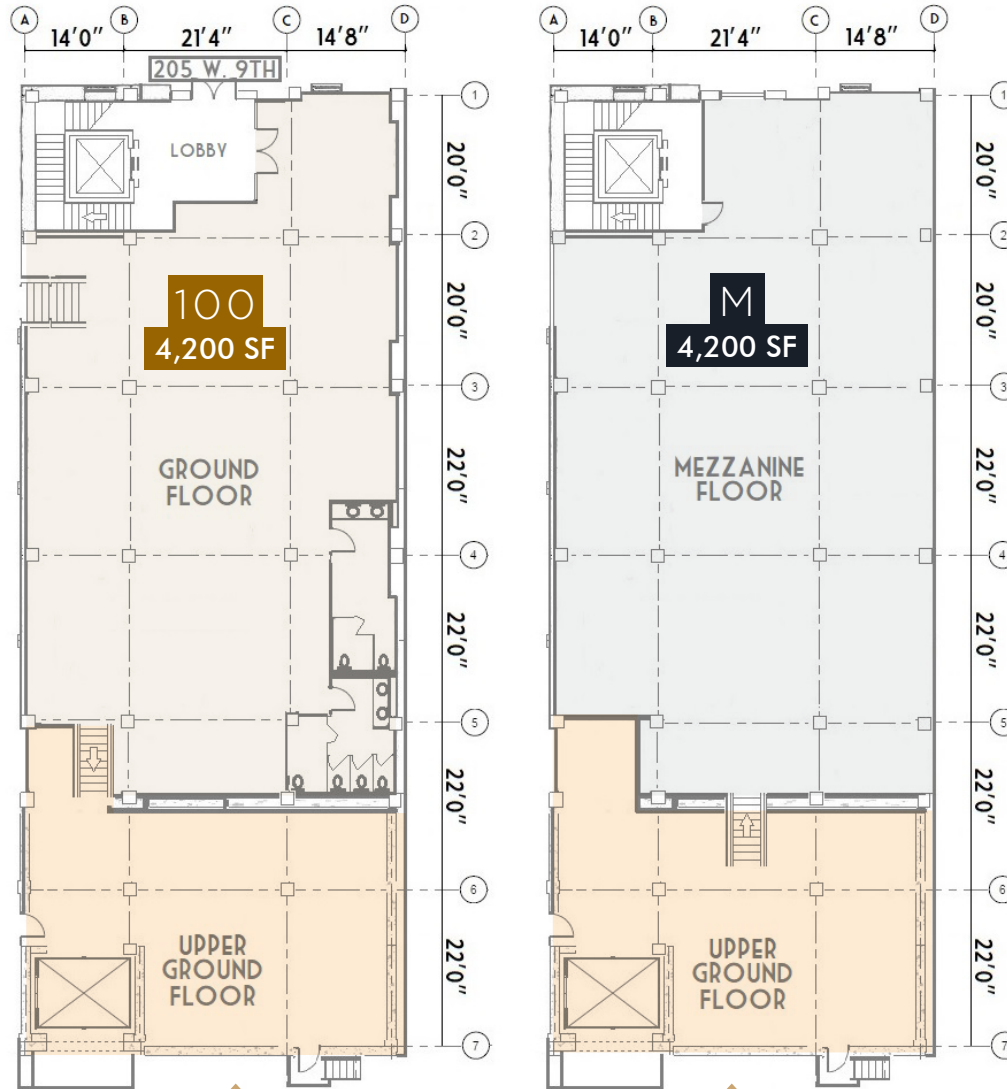
1ST FLOOR - SUITES 101, 102 & 100
(Left to Right)



FLOOR PLANS

1ST FLOOR - SUITE 100+M

10,600 SF Total
1st Floor + Mezzanine

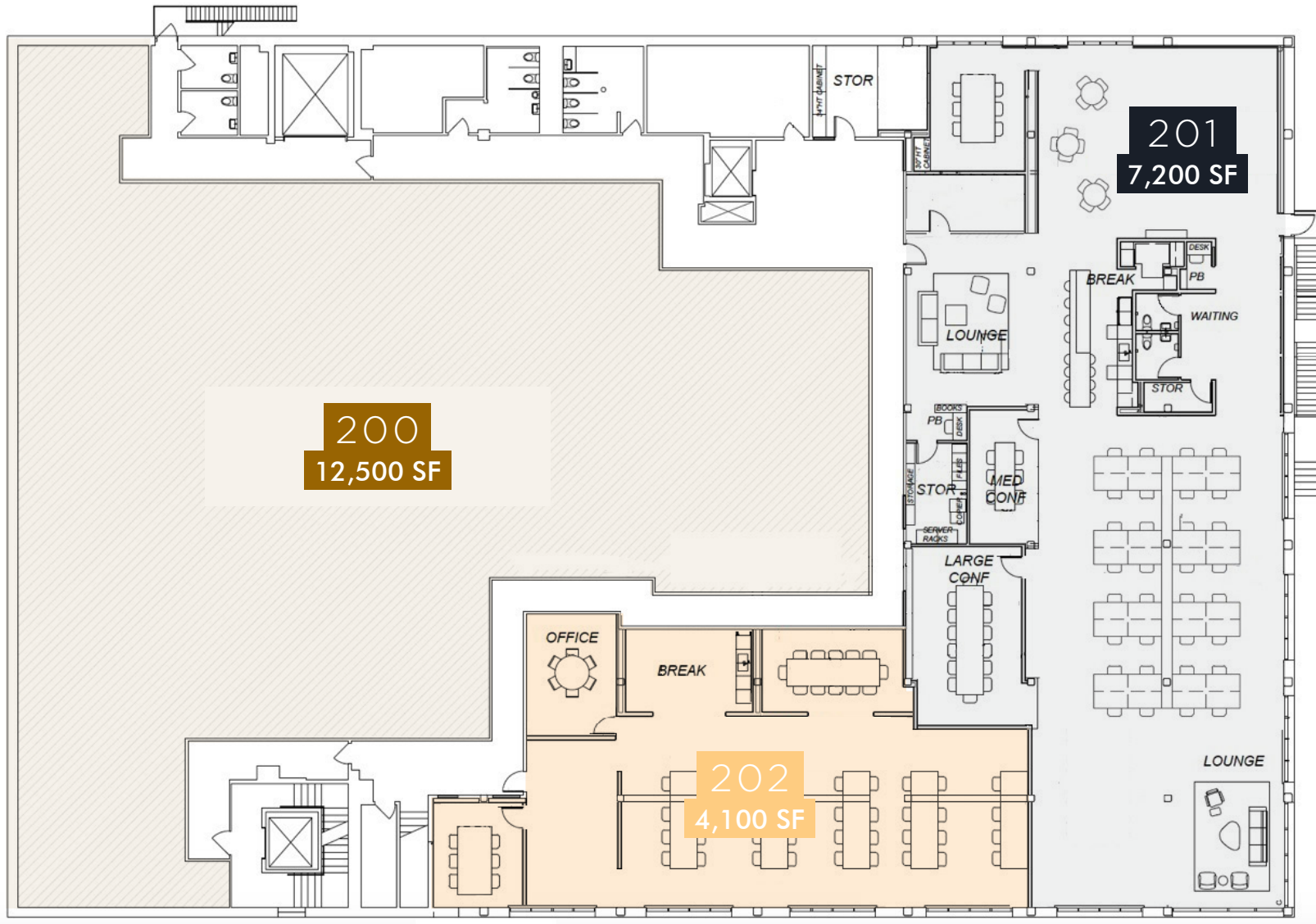


SPLIT LEVEL
2,200 SF

(shown on both floor plans)

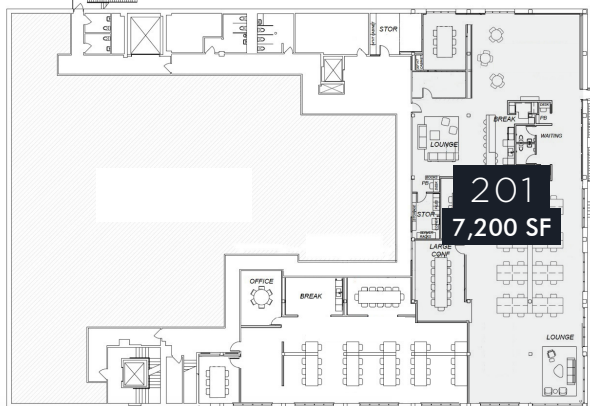
FLOOR PLANS

2ND FLOOR



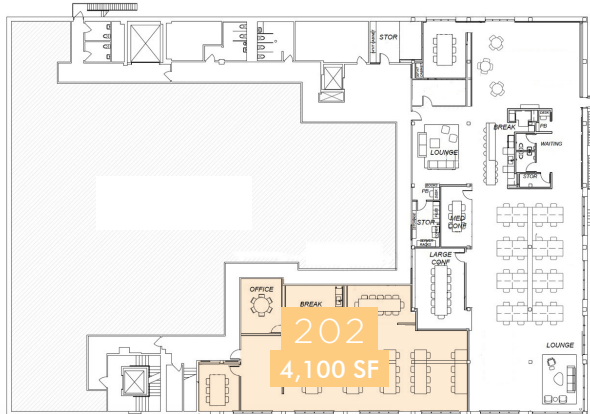
FLOOR PLANS

2ND FLOOR - SUITE 201
7,200 SF



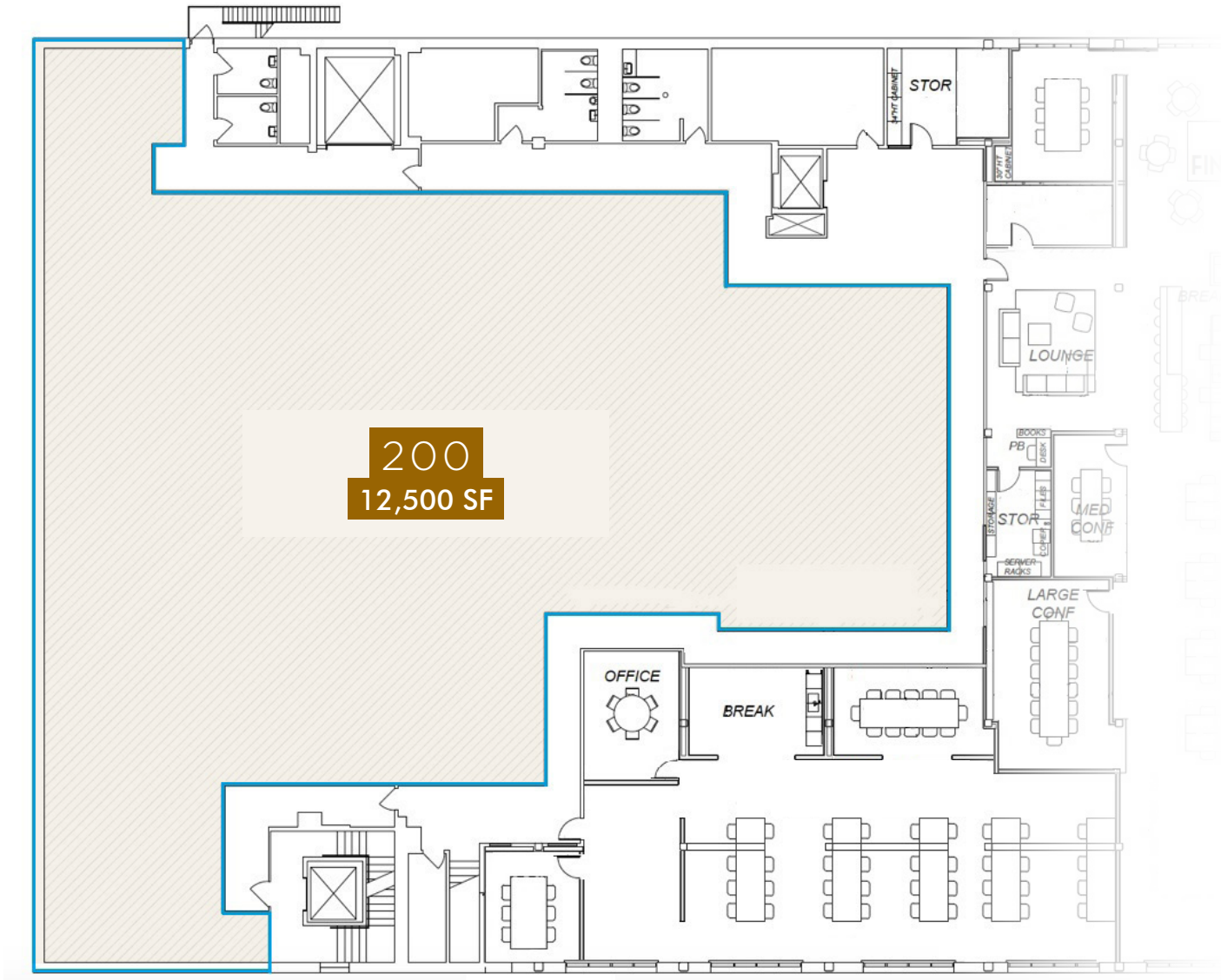
FLOOR PLANS

2ND FLOOR - SUITE 202
4,100 SF



FLOOR PLANS

2ND FLOOR - SUITE 200

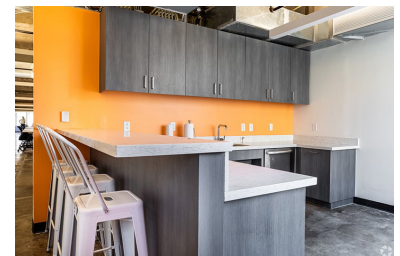
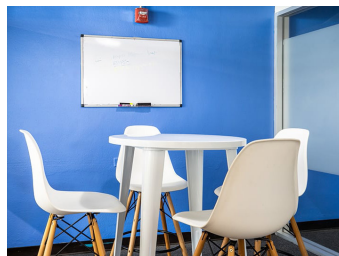
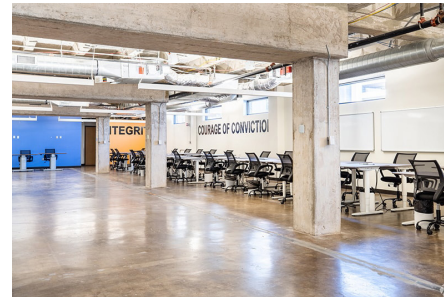
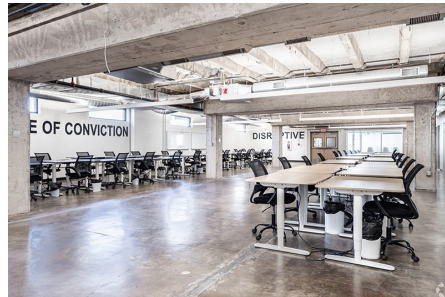
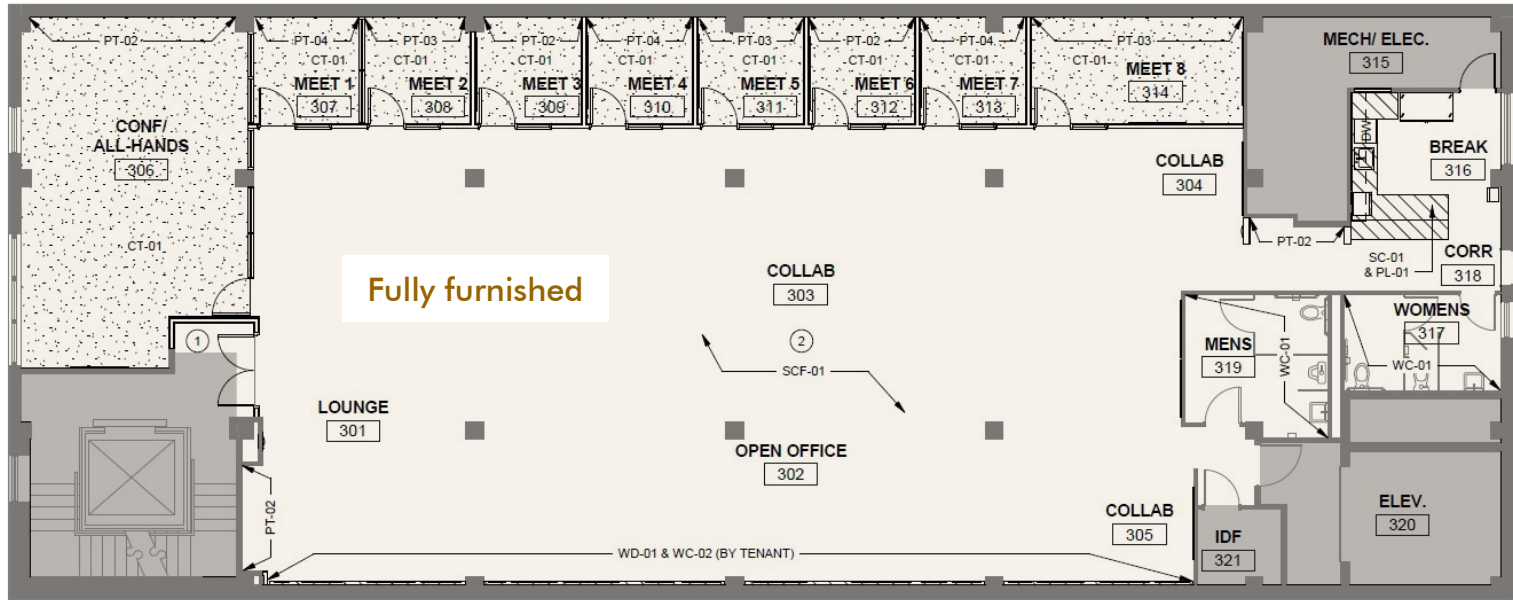


200
12,500 SF



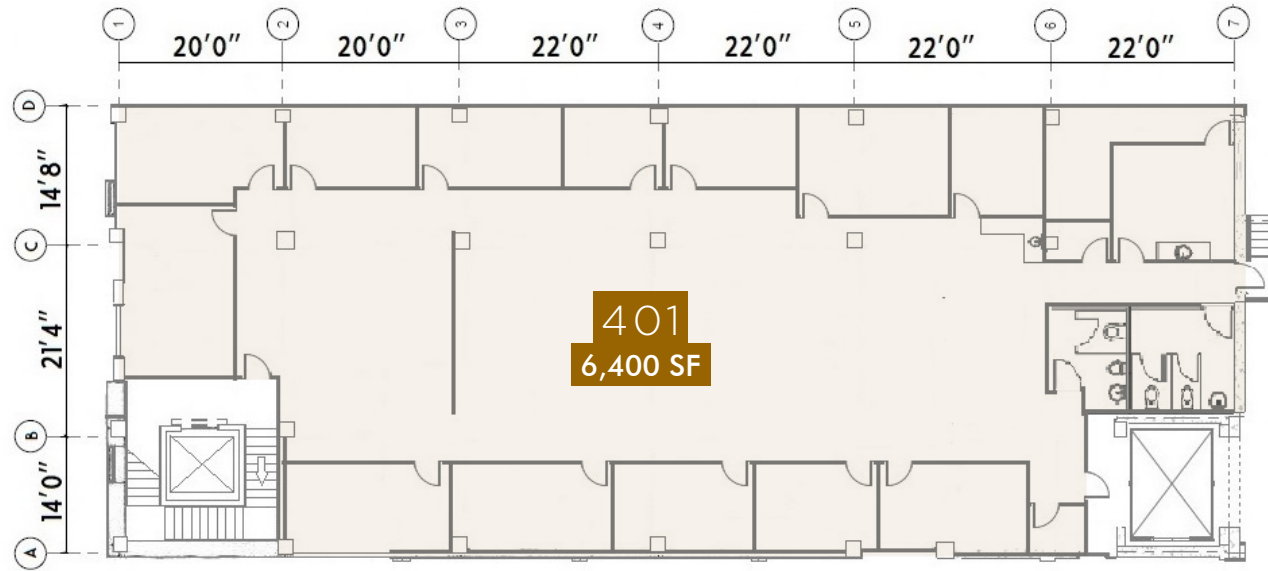
FLOOR PLANS

3RD FLOOR - 6,400 RSF



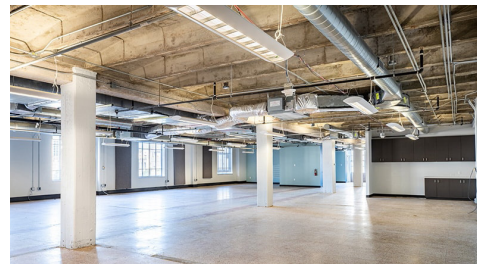
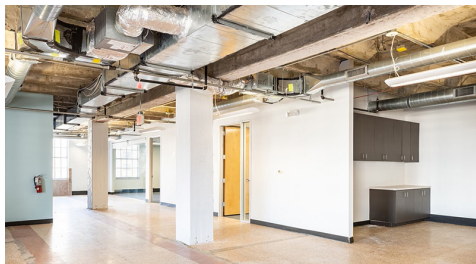
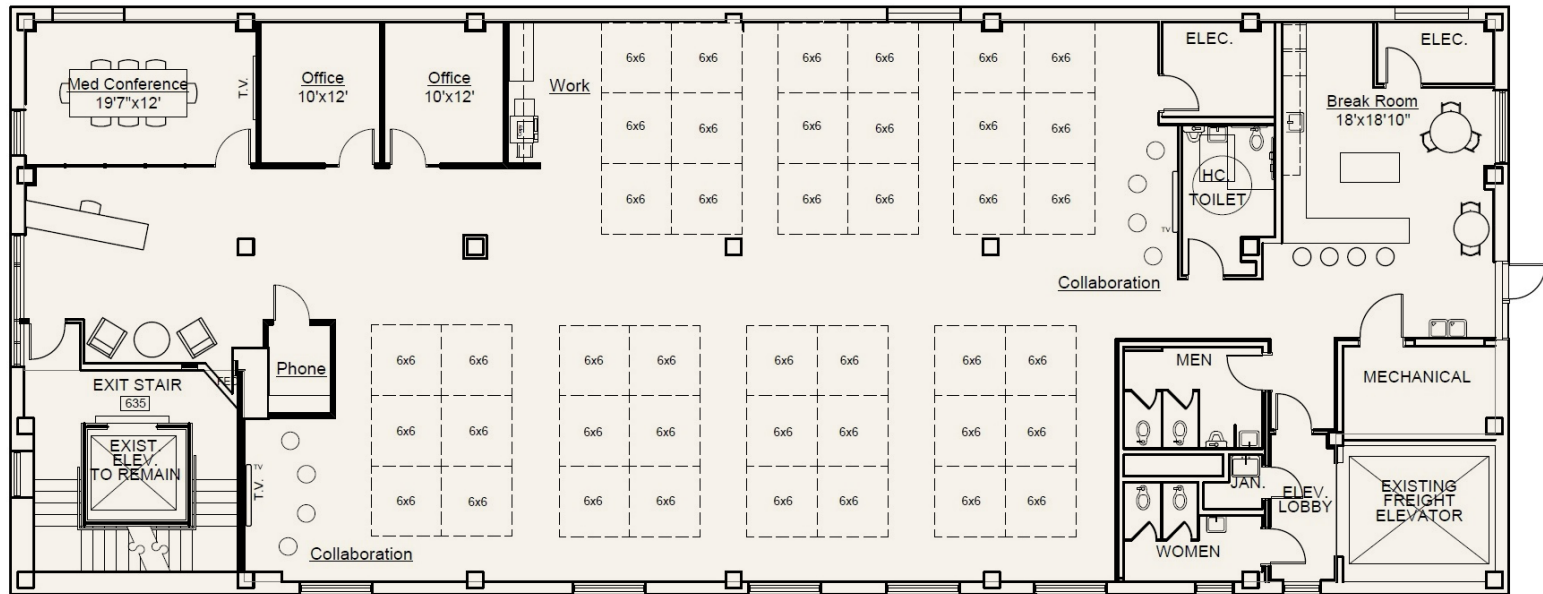
FLOOR PLANS

4TH FLOOR - SUITE 401



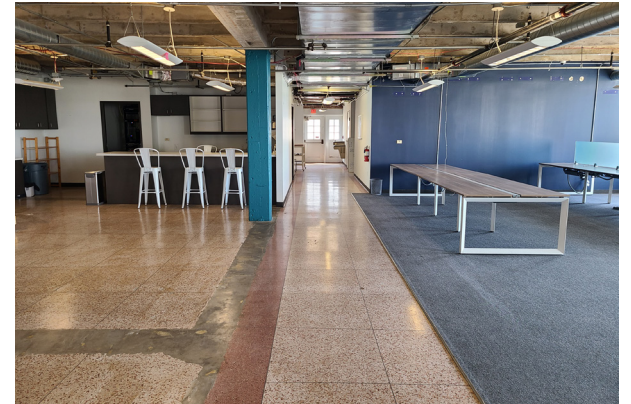
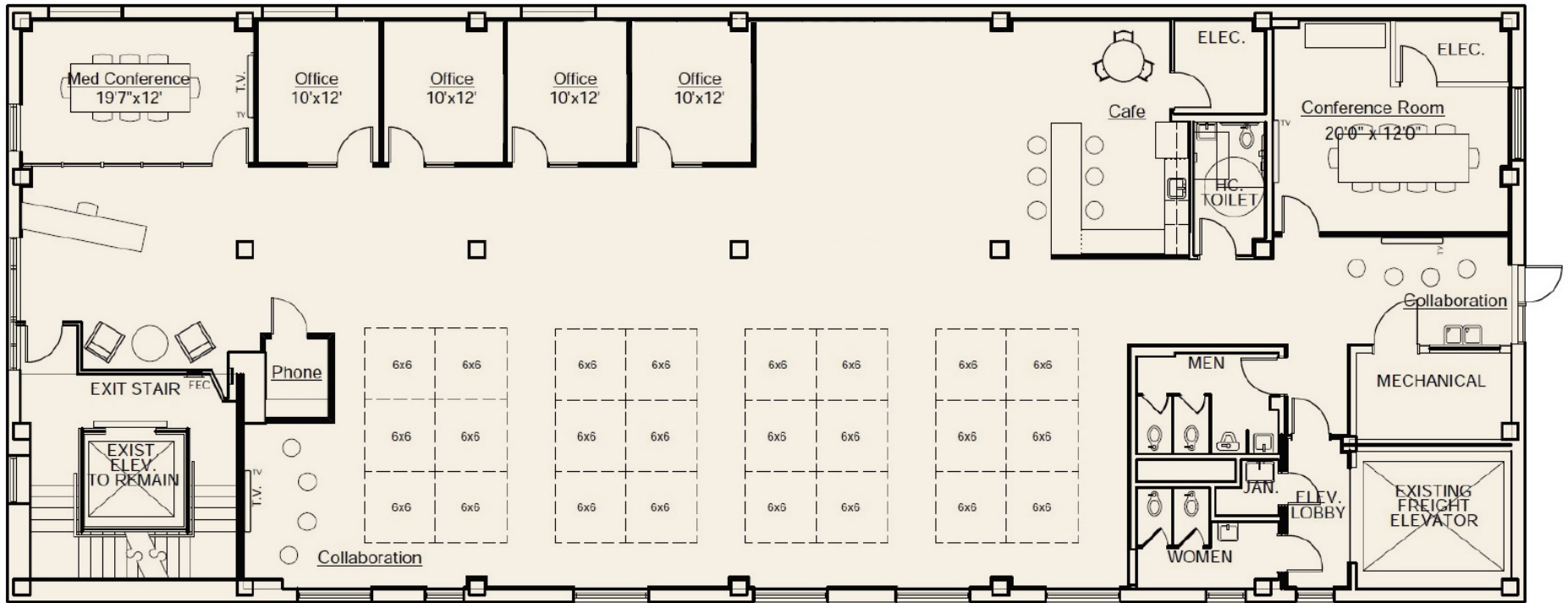
FLOOR PLANS

5TH FLOOR - 6,400 RSF



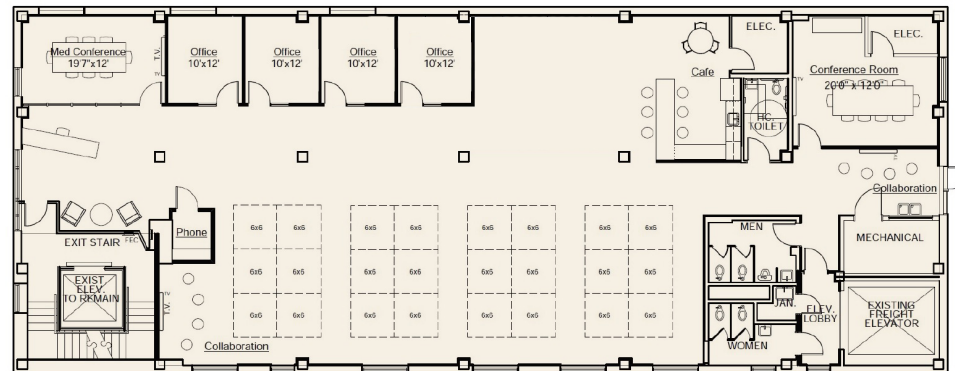
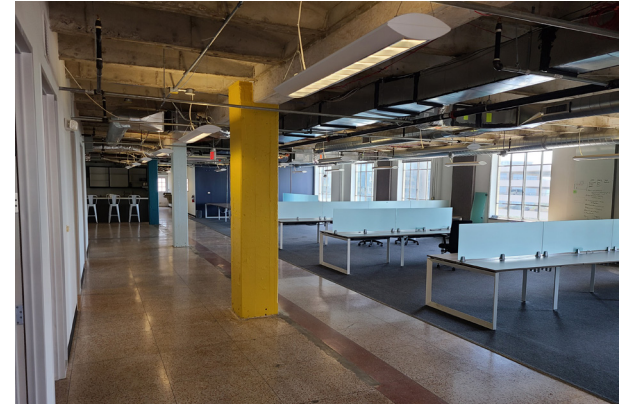
FLOOR PLANS

6TH FLOOR - 6,400 RSF



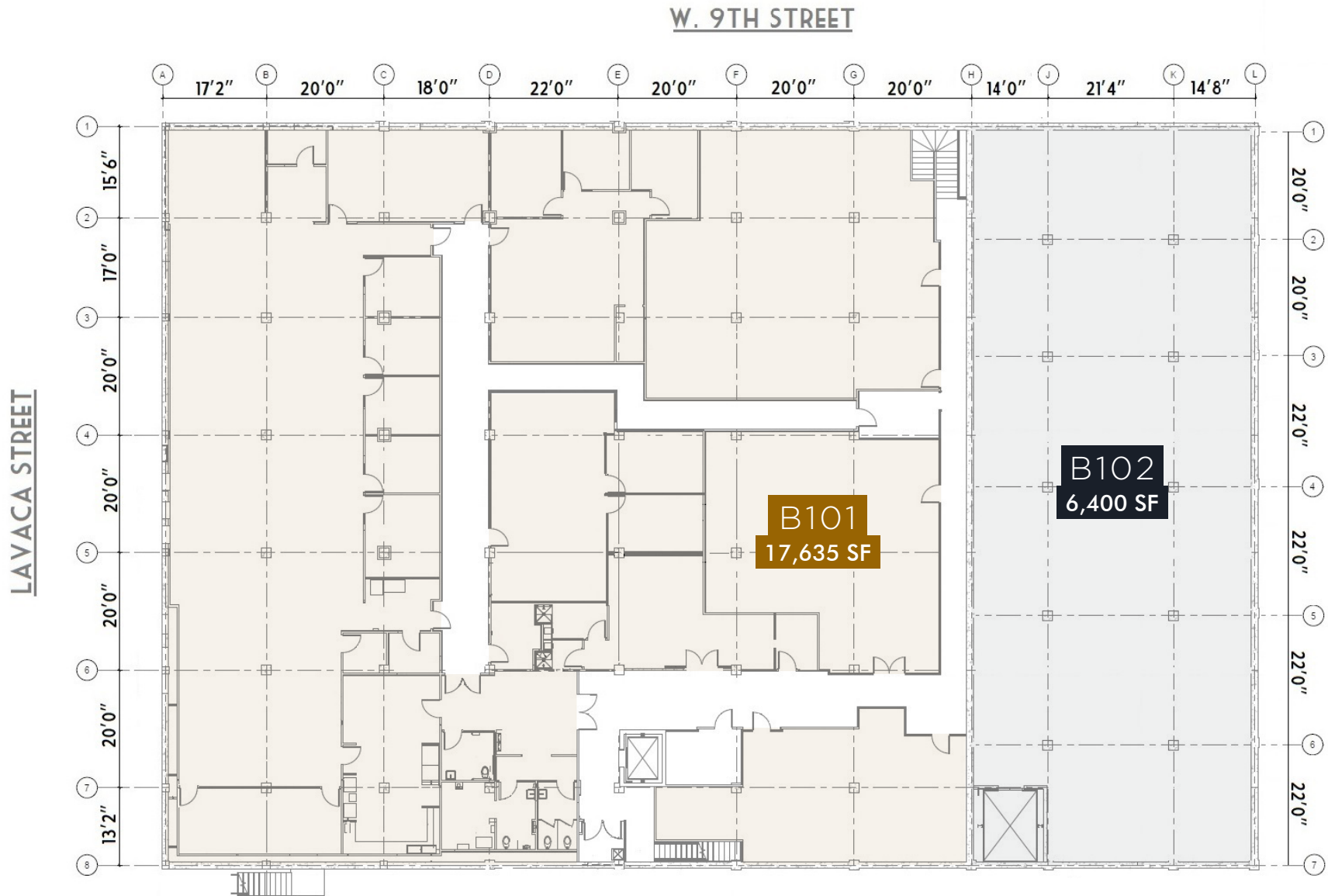
FLOOR PLANS

6TH FLOOR - 6,400 RSF



FLOOR PLANS

BASEMENT - SUITES B101 & B102





THE
TRAVIS BUILDING

205 W 9TH STREET, AUSTIN, TX 78701

For leasing, email michaelm@vbaustin.com or call 512-476-2061.