

South River Industrial

8200 NW 93rd Street
Medley, FL 33166

+/- 8,060-16,118 SF Available For Lease



South River Industrial

8200 NW 93rd Street | Medley, FL 33166



Property Highlights

South River Industrial is situated in the core of the East Medley sub-market of Miami with proximity to SR 826, Florida Turnpike and the Gratigny Expressway. Comprised of 169,814 SF in two buildings, South River Industrial offers modern amenities such as: 32' clear heights, 180' truck court, 54' column widths and an average of 1 dock per 3,300 square feet. With an above average parking ratio of 1.2 per 1,000 SF and 10% office finish, South River Industrial accommodates all industrial uses.

16K

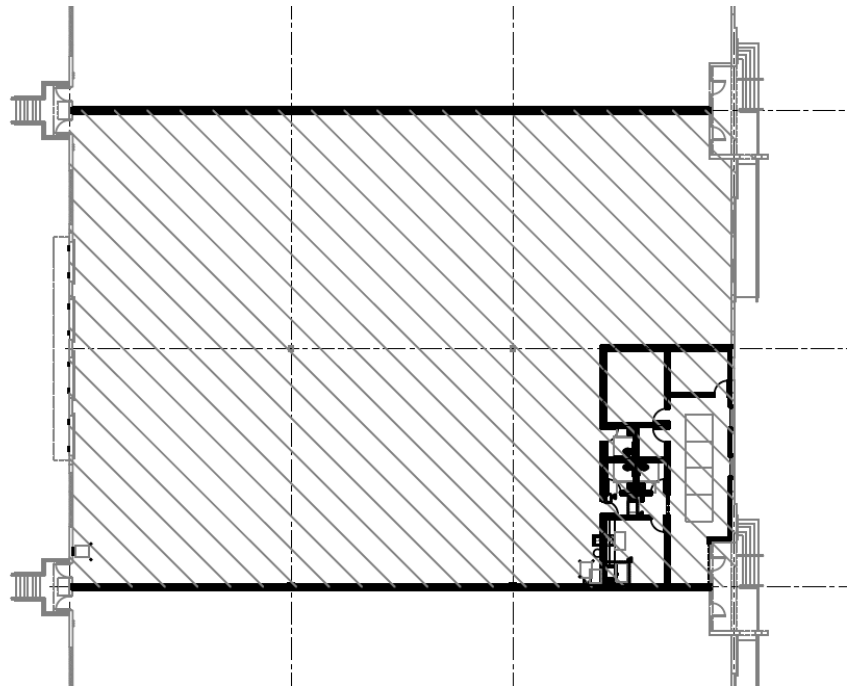
Total SF

32'

Clear Height

2020

Year Built



Property Features

Available SF	±16,118 SF
Warehouse SF	±14,644 SF
Office SF	±1,474 SF
Clear Height	32'
Loading	5 dock positions & 1 ramp
Truck Court	180-ft shared truck court
Parking	15 spaces
Lease Rate	\$18.75 NNN + \$5.00 OpEx
Available	July 2026

8K

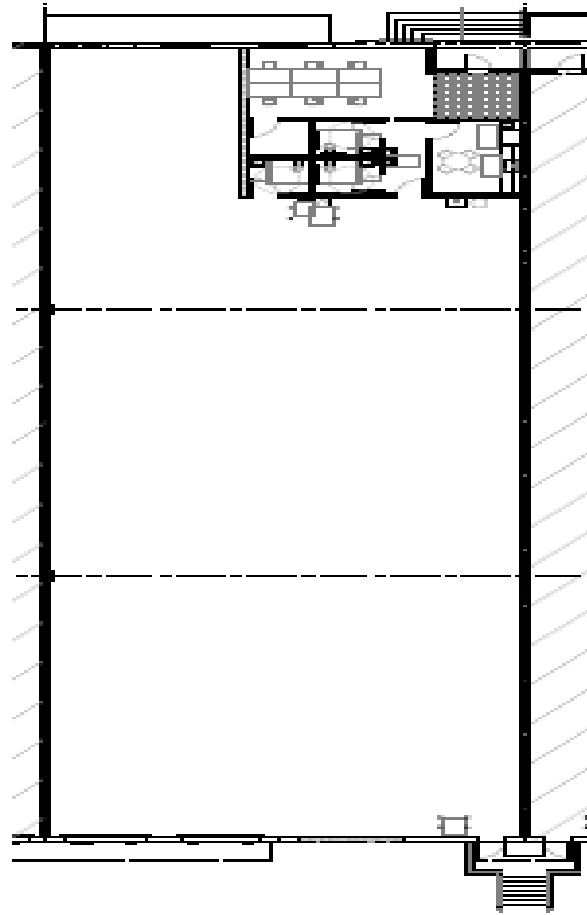
Total SF

32'

Clear Height

2020

Year Built



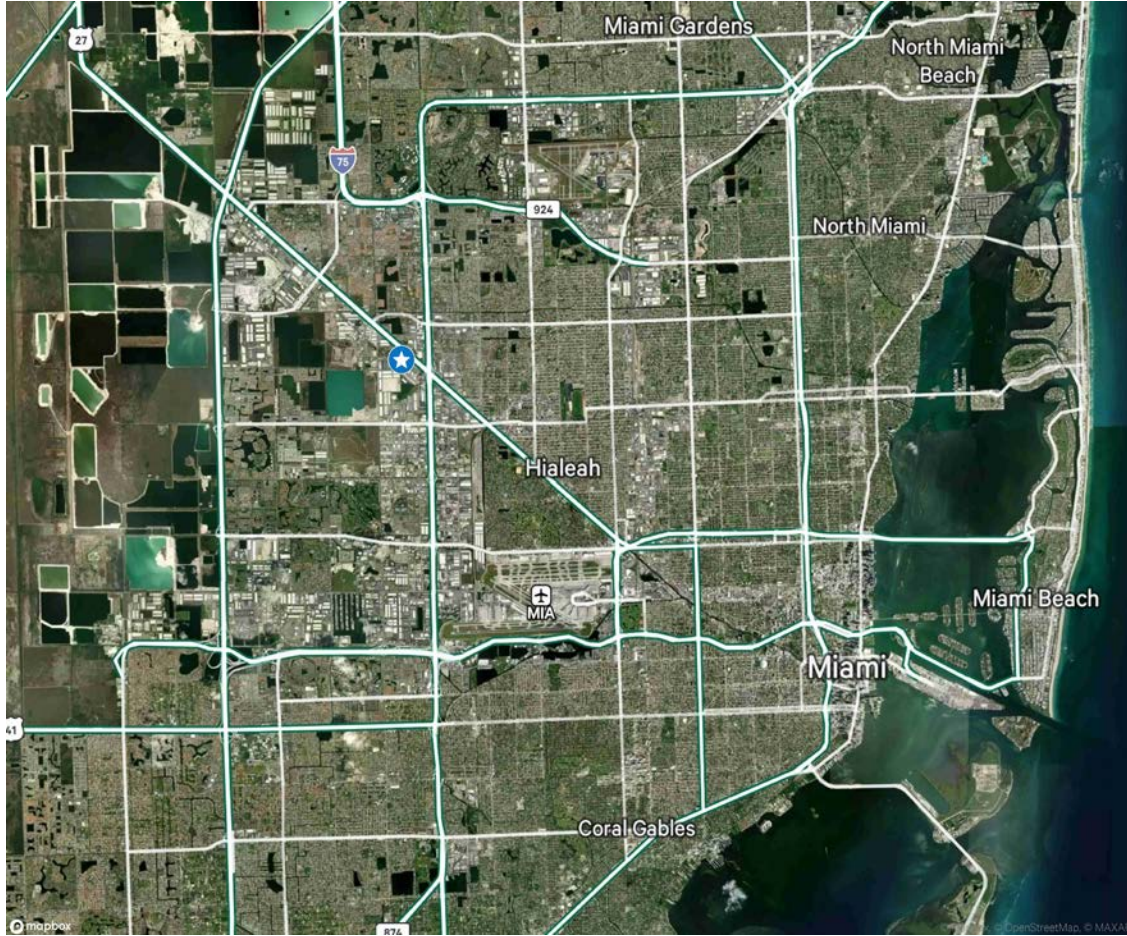
Property Features

Available SF	±8,060 SF
Warehouse SF	±7,265 SF
Office SF	±795 SF
Clear Height	32'
Loading	3 dock positions
Truck Court	180-ft shared truck court
Parking	7 spaces
Lease Rate	\$19.50 NNN + \$5.00 OpEx
Available	September 2026

South River Industrial

8200 NW 93rd Street | Medley, FL 33166

For Lease



Location Highlights

- + Strategic regional center-point between Miami-Dade and Broward Counties.
- + Located near the intersection of U.S. 27 and the Palmetto Expressway with access to Miami-Dade and broader South Florida via U.S. 27 and 74th to the Florida Turnpike.
- + Situated along the new 87th street bypass which will be a 60-foot wide roadway connecting U.S. 27 to the Palmetto Expressway providing for direct connectivity into the cargo terminals of the Miami International Airport, PortMiami, Port Everglades and greater South Florida.

Contact Us

Devin White

Executive Vice President
+1 305 381 6409
devin.white@cbre.com

Izzy Nakash

Associate
+1 347 860 1757
isabel.nakash@cbre.com

