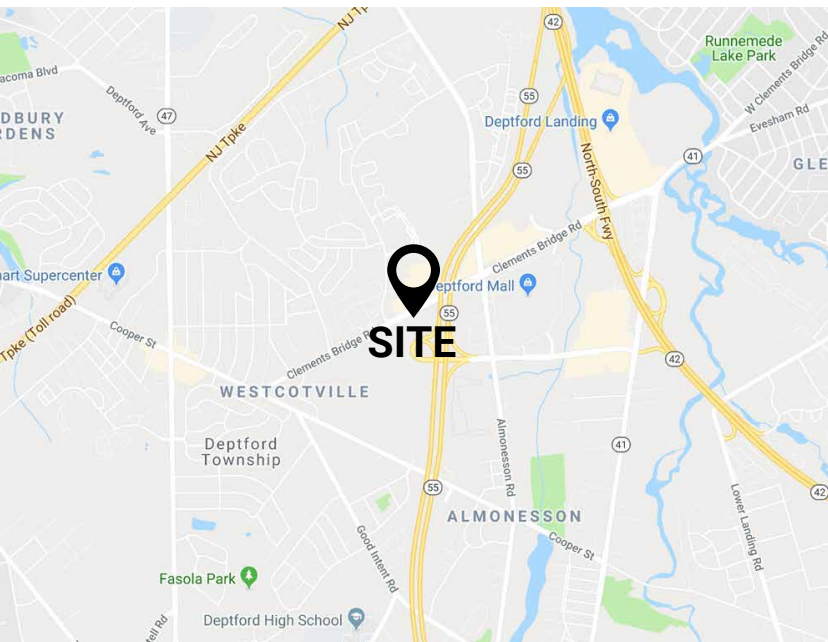


± 4.2 ACRE SITE AVAILABLE
1535 Clements Bridge Road, Deptford NJ 08096

FOR SALE:
\$1,395,000

PROPERTY FEATURES

- ✓ ± 4.2 Acres Available For Sale
- ✓ Great visibility from Route 55
- ✓ Close proximity to Deptford Mall and brand new Inspira / Wawa Development
- ✓ Strong Traffic Counts: ± 21,000 VPD
- ✓ Ideal Uses: Hotel, Self Storage, Medical / Office & Retail



ZOMMICK MCMAHON
COMMERCIAL REAL ESTATE

CONTACT US

MARK TRANI
Phone: 610.359.1100
Cell: 302.383.5156
Email: m.trani@zmcre.com

CHASE GUNTHER
Phone: 610.359.1100
Cell: 610.505.2242
Email: cgunther@zmcre.com

RYAN MCMAHON
Phone: 610.359.1100
Cell: 610.299.5144
Email: rmcmahon@zmcre.com

1306 Wilmington Pike, Suite A-2
West Chester, PA 19382
610.359.1100
www.zmcre.com

DEPTFORD SITE LOCATION AERIAL: 1535 CLEMENTS BRIDGE ROAD



CONTACT US



MARK TRANI
Phone: 610.359.1100
Cell: 302.383.5156
Email: m.trani@zmcre.com

CHASE GUNTHER
Phone: 610.359.1100
Cell: 610.505.2242
Email: cgunther@zmcre.com

RYAN MCMAHON
Phone: 610.359.1100
Cell: 610.299.5144
Email: rmcmahon@zmcre.com

1306 Wilmington Pike, Suite A-2
West Chester, PA 19382
610.359.1100
www.zmcre.com

DEPTFORD RETAIL MARKET AERIAL: 1535 CLEMENTS BRIDGE ROAD



CONTACT US



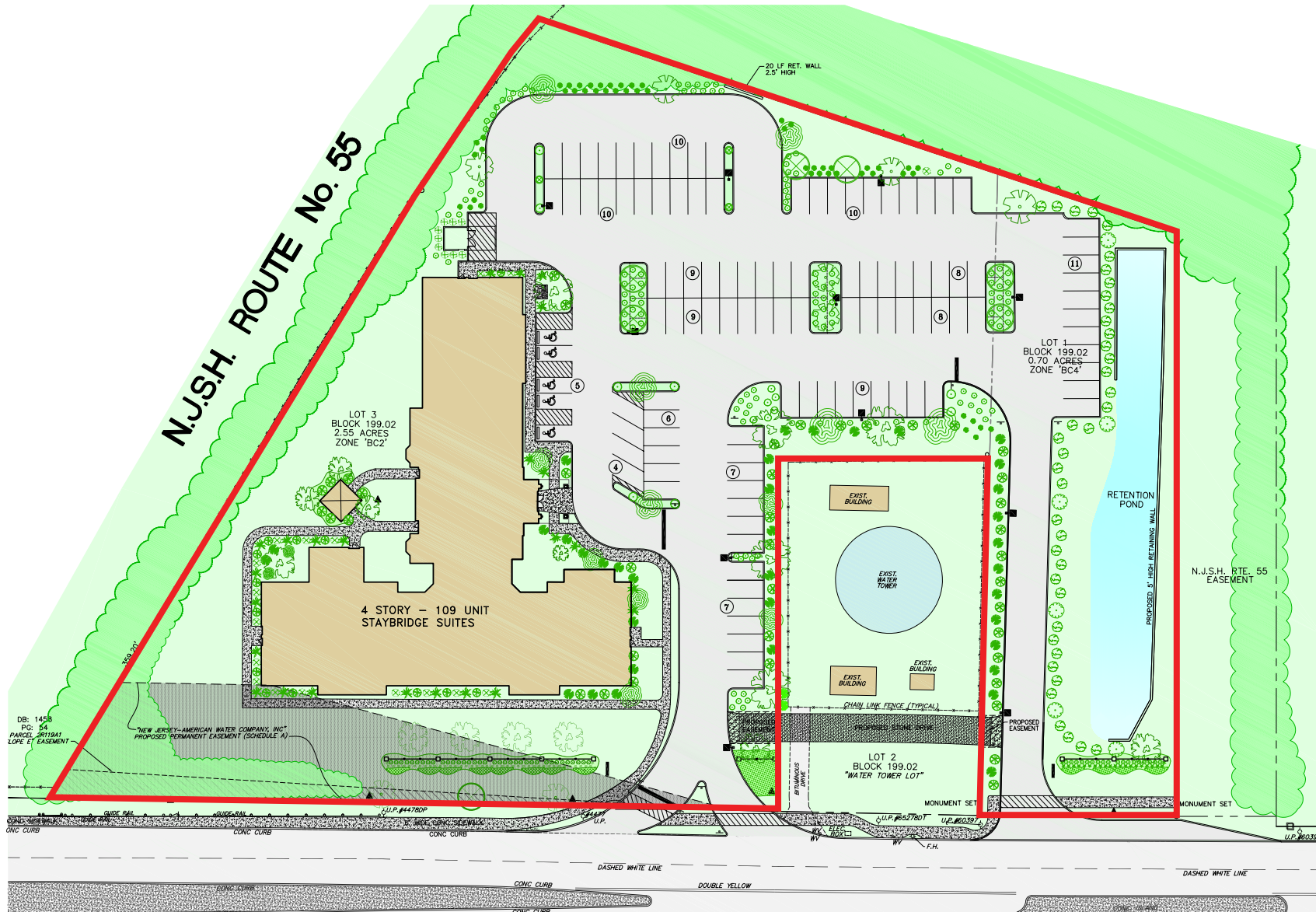
MARK TRANI
 Phone: 610.359.1100
 Cell: 302.383.5156
 Email: m.trani@zmcre.com

CHASE GUNTHER
 Phone: 610.359.1100
 Cell: 610.505.2242
 Email: cgunther@zmcre.com

RYAN MCMAHON
 Phone: 610.359.1100
 Cell: 610.299.5144
 Email: rmcmahon@zmcre.com

1306 Wilmington Pike, Suite A-2
 West Chester, PA 19382
 610.359.1100
www.zmcre.com

PROPERTY CONCEPT PLAN: 1535 CLEMENTS BRIDGE ROAD



CONTACT US

MARK TRANI
Phone: 610.359.1100
Cell: 302.383.5156
Email: m.trani@zmcre.com

CHASE GUNTHER
Phone: 610.359.1100
Cell: 610.505.2242
Email: cgunther@zmcre.com

RYAN MCMAHON
Phone: 610.359.1100
Cell: 610.299.5144
Email: rmcmahon@zmcre.com

1306 Wilmington Pike, Suite A-2
West Chester, PA 19382
610.359.1100
www.zmcre.com

ABOUT ZOMMICK McMAHON COMMERCIAL REAL ESTATE

Zommick McMahon Commercial Real Estate, Inc. has been a Metro Philadelphia Area staple since its inception in 1949. The Company was founded by Joseph Zommick, and continues today with Ryan McMahon and his highly experienced staff, whom are all results-oriented professionals.

SOME OF OUR SATISFIED CLIENTS:



CONTACT US

MARK TRANI
Phone: 610.359.1100
Cell: 302.383.5156
Email: m.trani@zmcre.com

CHASE GUNTHER
Phone: 610.359.1100
Cell: 610.505.2242
Email: cgunther@zmcre.com

RYAN McMAHON
Phone: 610.359.1100
Cell: 610.299.5144
Email: rmcmahon@zmcre.com

1306 Wilmington Pike, Suite A-2
West Chester, PA 19382
610.359.1100
www.zmcre.com