



Garden Offices at West Business Park

6905 Alcove Avenue | Lubbock, TX 79407

Property Features

Join the brand new West Business Park Development! Located just on the edge of Lubbock and quickly-growing Wolfforth, these beautiful garden offices boast easy access to and from the Marsha Sharp Fwy, while nestled amidst several new residential developments. Featuring modern finishes, abundant natural light, and a flexible layout, these spaces create a bright & professional environment ideal for a wide range of businesses.

Offering Summary

AVAILABLE SPACE	2,400 SF
BUILDING SIZE	4,550 SF
LEASE PRICE	Contact Broker
SALE PRICE	\$250/SF

NO WARRANTY OR REPRESENTATION, EXPRESS OR IMPLIED, IS MADE AS TO THE ACCURACY OF THE INFORMATION CONTAINED HEREIN, AND THE SAME IS SUBMITTED SUBJECT TO ERRORS, OMISSIONS, CHANGE OF PRICE, RENTAL OR OTHER CONDITIONS, PRIOR SALE, LEASE OR FINANCING, OR WITHDRAWAL WITHOUT NOTICE, AND OF ANY SPECIAL LISTING CONDITIONS IMPOSED BY OUR PRINCIPALS NO WARRANTIES OR REPRESENTATIONS ARE MADE AS TO THE CONDITION OF THE PROPERTY OR ANY HAZARDS CONTAINED THEREIN ARE ANY TO BE IMPLIED.

Joseph Magby
joe@naiwheelhouse.com
+1 806 200 3244
naiwheelhouse.com

AVAILABLE

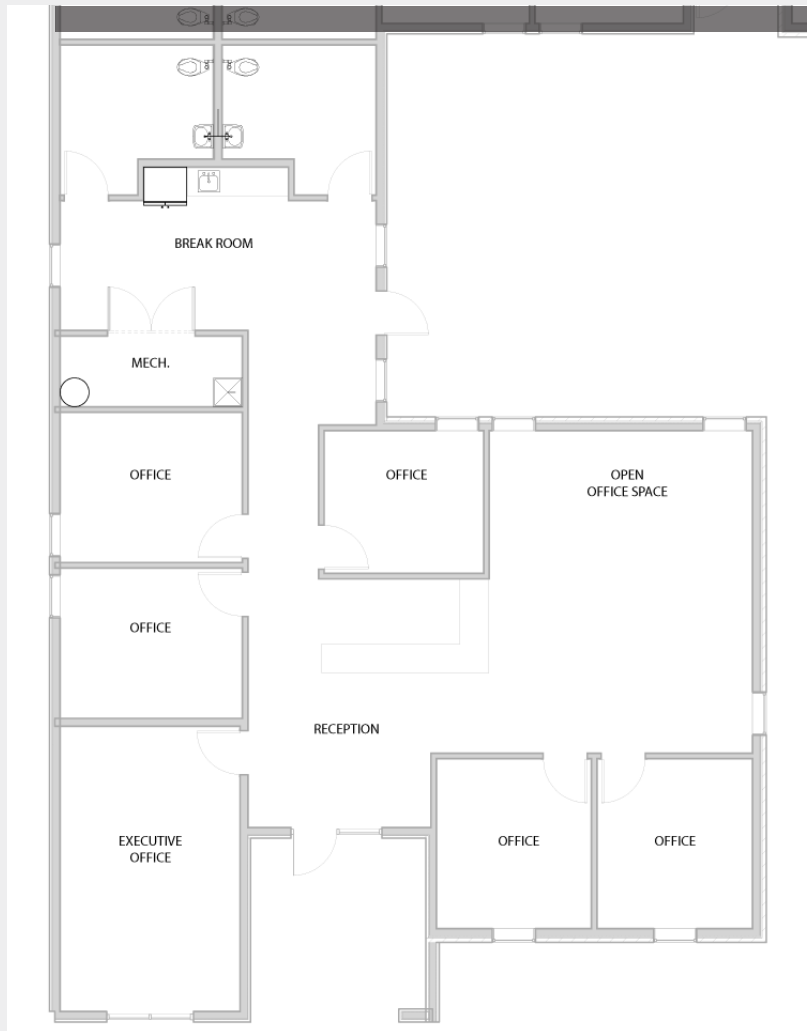
Suite 100 - 2,400 SF



AVAILABLE

Suite 100 - 2,400 SF

5 Offices, Executive Office/Conference Room, Bullpen, Break Room, & 2 Restrooms



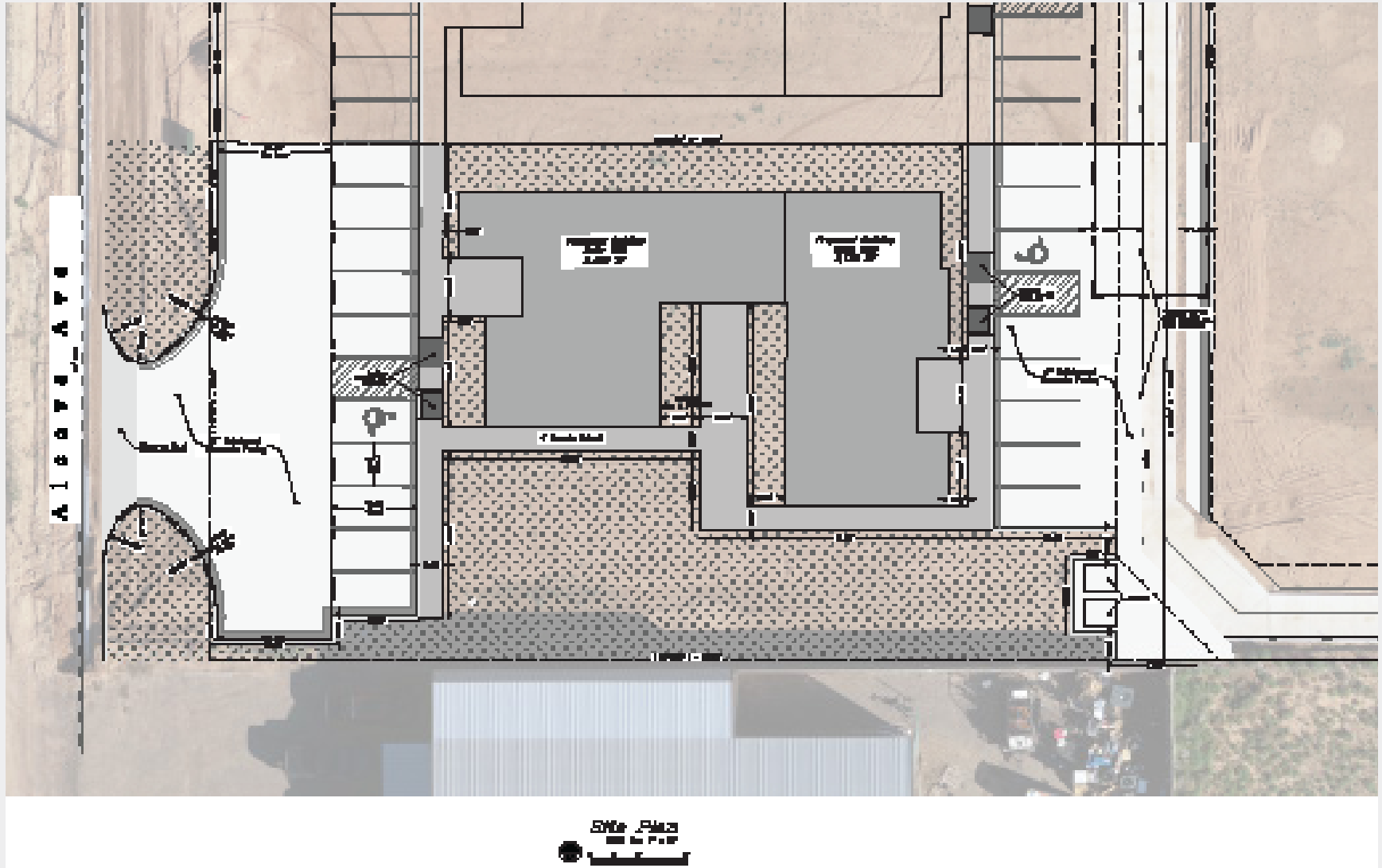
Suite 200 - 2,150 SF

4 Offices, Executive Office/Conference Room, Bullpen, Break Room, & 2 Restrooms



AVAILABLE







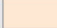
Site Plan



AVAILABLE

Park Plan

KEY:

-  LAND AVAILABLE:
RETAIL PAD SITE
-  LAND AVAILABLE:
OFFICE/WAREHOUSE
-  LAND AVAILABLE:
GARDEN OFFICE
-  AVAILABLE:
BUILT OR UNDER
CONSTRUCTION
-  GARDEN OFFICE:
BUILT OR UNDER
CONSTRUCTION
-  UNDER CONTRACT
-  SOLD/LEASED



Park Location

AVAILABLE

