

LAKESIDE PROFESSIONAL

190 North Evergreen Avenue, Woodbury, NJ 08096



- Lakeside Professional Campus is an office building located within a mile of Inspira Medical Center, Gloucester County Courthouse, and the Woodbury train station.
- Suites feature private entrances and lobby suite entrances.
- Existing vacant suites ready for immediate occupancy with minimal tenant improvements required.
- Conveniently located in close proximity to I-295, North Broad Street (Route 45) and the New Jersey Turnpike.
- Only 10 minutes from the Walt Whitman Bridge allowing for easy access to The Philadelphia International Airport.

FIRST NATIONAL
REALTY PARTNERS

FOR LEASING INFORMATION

Bret Nesbitt
VP, Leasing

P: 850.401.0554

E: bnesebitt@fnrpusa.com

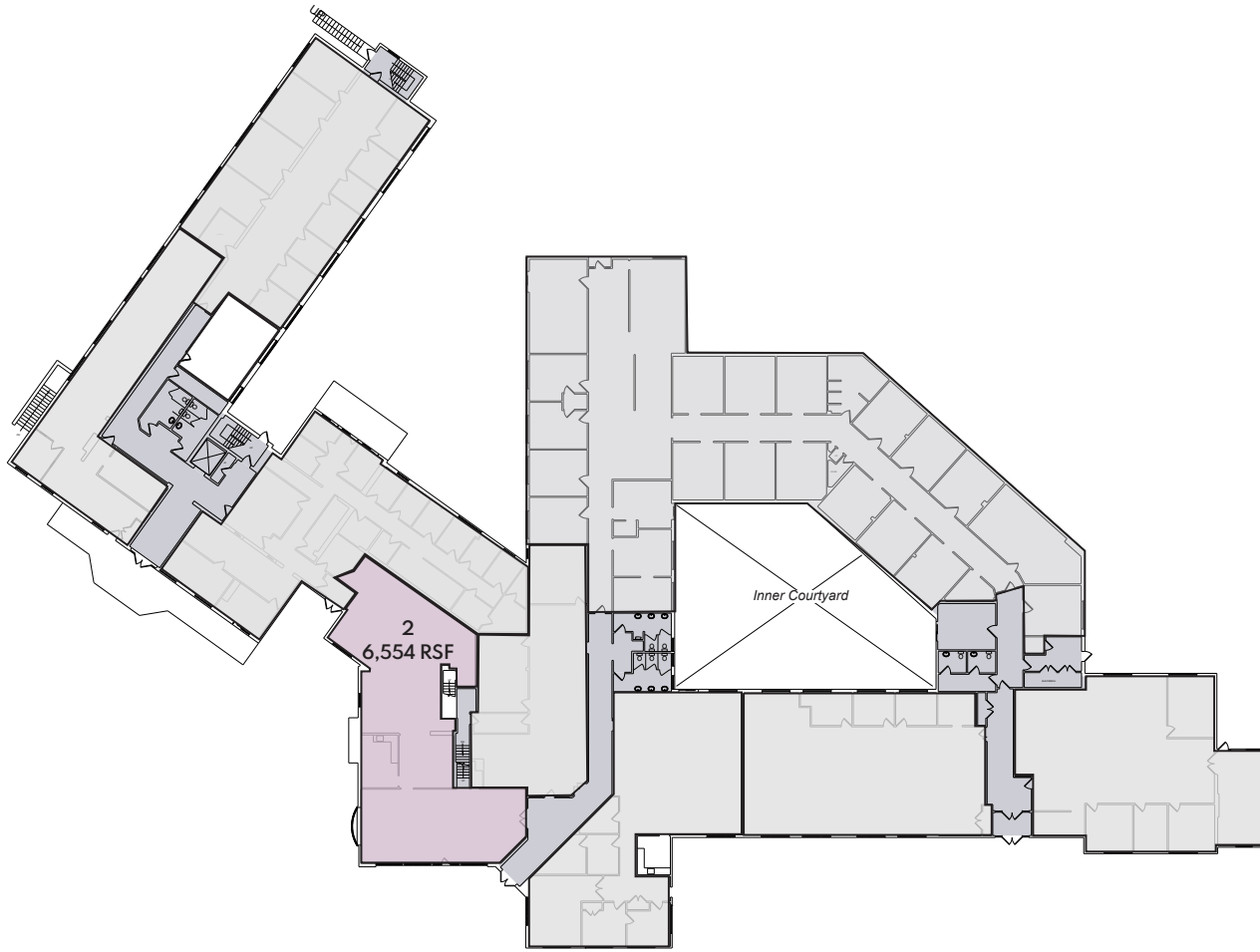
W: fnrpusa.com

LAKESIDE PROFESSIONAL

190 North Evergreen Avenue, Woodbury, NJ 08096

FIRST FLOOR AVAILABILITIES

Suite 2 - 6,654 SF



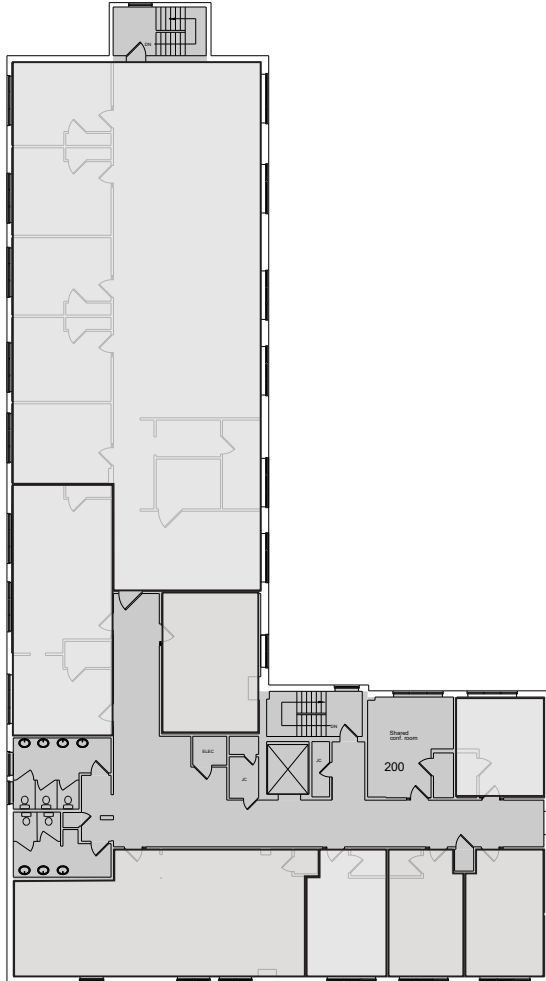
LEGEND

| SUITE | TENANT NAME | SF |
|-------|-------------------------------------|-------|
| 1 | BEHAVIORAL INTERVENTIONS INC. | 3,353 |
| 2 | AVAILABLE | 6,654 |
| 96 | GIVING BETTER LIVES | 4,677 |
| 101 | IDEMIA | 2,357 |
| 102 | KENNEDY MEDICAL GROUP PRACTICE P.C. | 4,000 |
| 108 | GLOUCESTER COUNTY EDUCATION ASSN. | 3,600 |
| 120 | DURAND ACADEMY | 3,015 |
| 122 | BEST OF BOTH WORLDS | 3,762 |
| 201 | KENNETH DARBY LLC | 385 |
| 202 | GARDEN STATE PSYCHIATRIC | 274 |
| 203 | GARDEN STATE PSYCHIATRIC | 415 |
| 204 | KELLEY & CROSSLEY | 437 |
| 205 | GIVING BETTER LIVES | 4,176 |
| 206 | LISA CARNEY | 1,093 |
| 207 | HELENA AGRI ENTERPRISES | 450 |
| 210 | GIVING BETTER LIVES | 1,491 |

LAKESIDE PROFESSIONAL

190 North Evergreen Avenue, Woodbury, NJ 08096

SECOND FLOOR - FULLY LEASED



LEGEND

| SUITE | TENANT NAME | SF |
|-------|-------------------------------------|-------|
| 1 | BEHAVIORAL INTERVENTIONS INC. | 3,353 |
| 2 | AVAILABLE | 6,654 |
| 96 | GIVING BETTER LIVES | 4,677 |
| 101 | IDEMIA | 2,357 |
| 102 | KENNEDY MEDICAL GROUP PRACTICE P.C. | 4,000 |
| 108 | GLOUCESTER COUNTY EDUCATION ASSN. | 3,600 |
| 120 | DURAND ACADEMY | 3,015 |
| 122 | BEST OF BOTH WORLDS | 3,762 |
| 201 | KENNETH DARBY LLC | 385 |
| 202 | GARDEN STATE PSYCHIATRIC | 274 |
| 203 | GARDEN STATE PSYCHIATRIC | 415 |
| 204 | KELLEY & CROSSLEY | 437 |
| 205 | GIVING BETTER LIVES | 4,176 |
| 206 | LISA CARNEY | 1,093 |
| 207 | HELENA AGRI ENTERPRISES | 450 |
| 210 | GIVING BETTER LIVES | 1,491 |