

1733 Eastchester Rd.

Bronx, New York

17,128 SF

Ground + Second Floor

MEDICAL & OFFICE SPACE AVAILABLE FOR LEASE - BUILDING SIGNAGE OPPORTUNITY



SIMONE[®]
DEVELOPMENT COMPANIES

Josh Gopan
jgopan@simdev.com
718-215-3000 x213

Jeremy Schwartz
jschwartz@simdev.com
718-215-3000 x296

Information contained herein subject to errors, omissions, change of price, rental or other conditions prior to sale, lease or financing, including the withdrawal without notice.



1733 Eastchester Rd.

Bronx, New York

MEDICAL AND OFFICE SPACE

17,128 SF

Ground + Second Floor



PRIME MEDICAL AND BUILDING FOR LEASE

Space Available	Price	Existing Property Features	
Ground Floor: 6,663 sq. ft.	Upon Request + Utilities	+ Move In Condition + Within Montefiore Medical Park/ Across from Hutchinson Metro Center + Available Immediately + Reserved Parking	+ Adjacent to several Bus Stops: BX 21, BX 24, BX 31, BX 40, BX 9 + Future Metro-North Morris Park Train Station + Building Signage Available
*2nd Floor: 10,465 sq ft *Divisible*			

Siteplan & Highlights

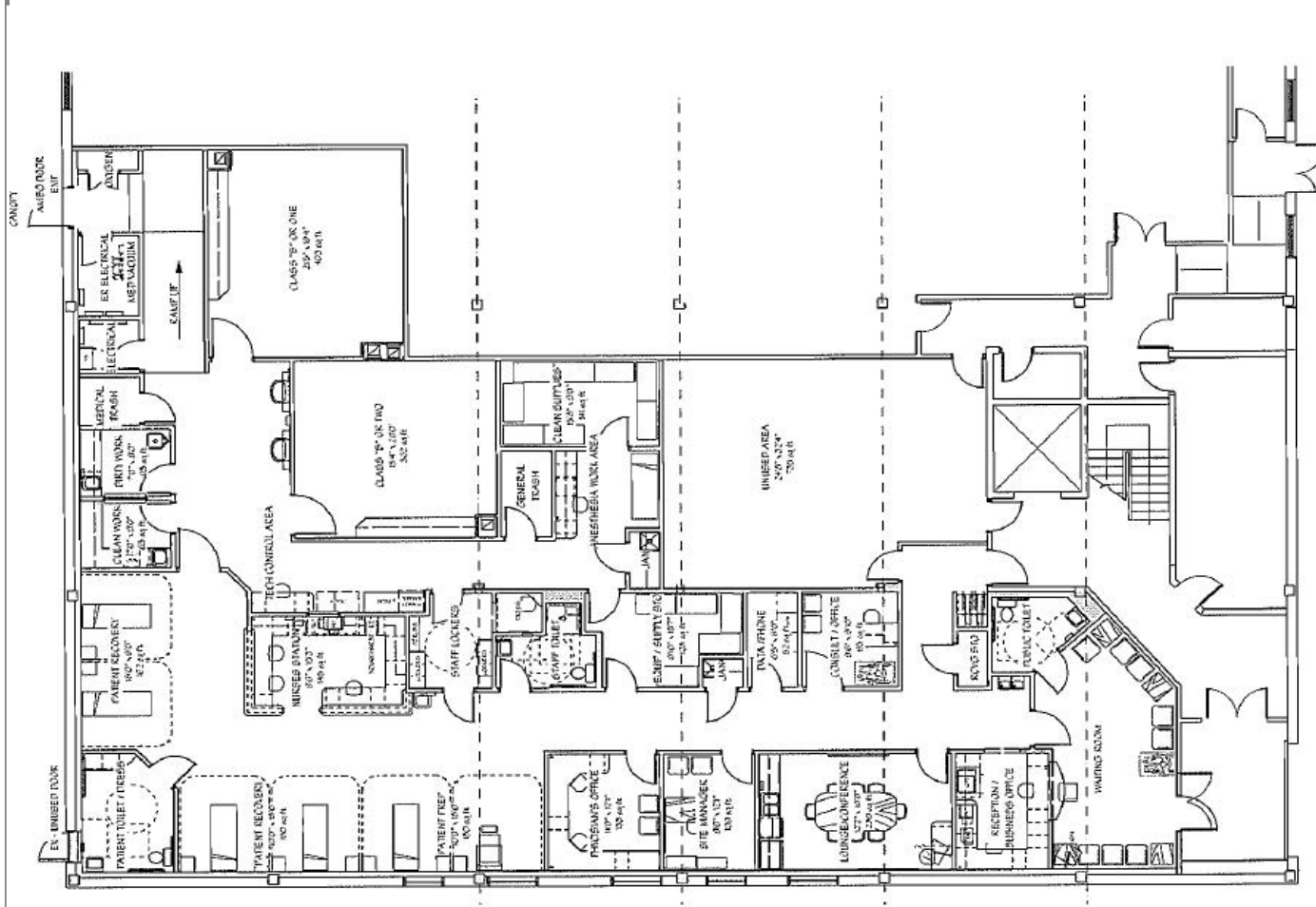
1733 Eastchester Rd., Bronx, New York

MEDICAL AND OFFICE SPACE

17,128 SF

Ground + Second Floor

Ground Floor



Property Highlights

- + Prime Medical Office Space
- + Ground Floor: 6,663 sq. ft.
- + 2nd Floor: 10,465 sq. ft.
Divisible
- + Within Montefiore Medical Park
- + Across from Hutchinson Metro Center
- + Adjacent to several Bus Stops: BX 21, BX 24, BX 31, BX 40, BX 9
- + Future Metro-North Morris Park Train Station
- + Reserved Parking
- + Building Signage Available

Siteplan & Highlights

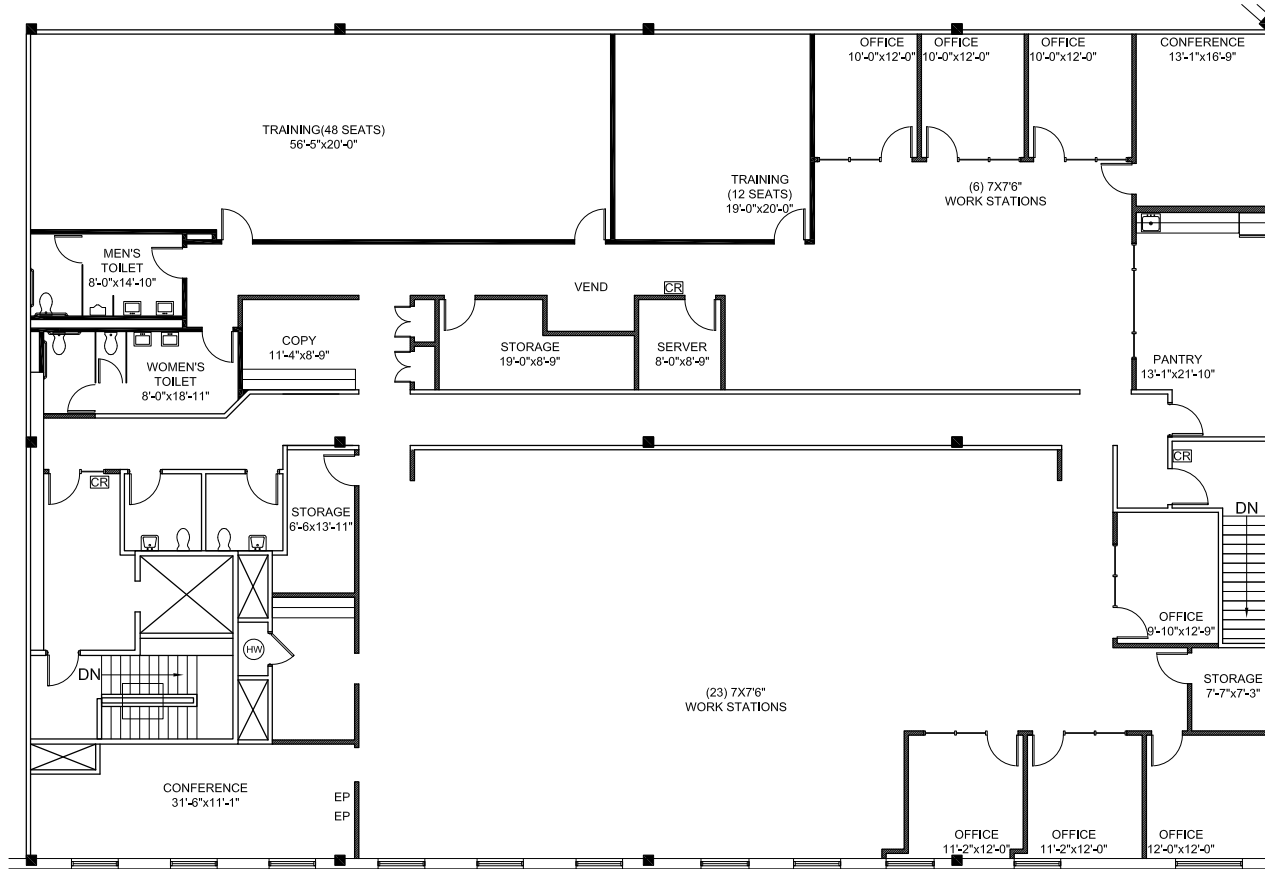
1733 Eastchester Rd., Bronx, New York

MEDICAL AND OFFICE SPACE

17,128 SF

Ground + Second Floor

2nd Floor



Property Highlights

- + Prime Medical Office Space
- + Ground Floor: 6,663 sq. ft.
- + 2nd Floor: 10,465 sq. ft.
Divisible
- + Within Montefiore Medical Park
- + Across from Hutchinson Metro Center
- + Reserved Parking
- + Adjacent to several Bus Stops: BX 21, BX 24, BX 31, BX 40, BX 9
- + Future Metro-North Morris Park Train Station
- + Building Signage Available

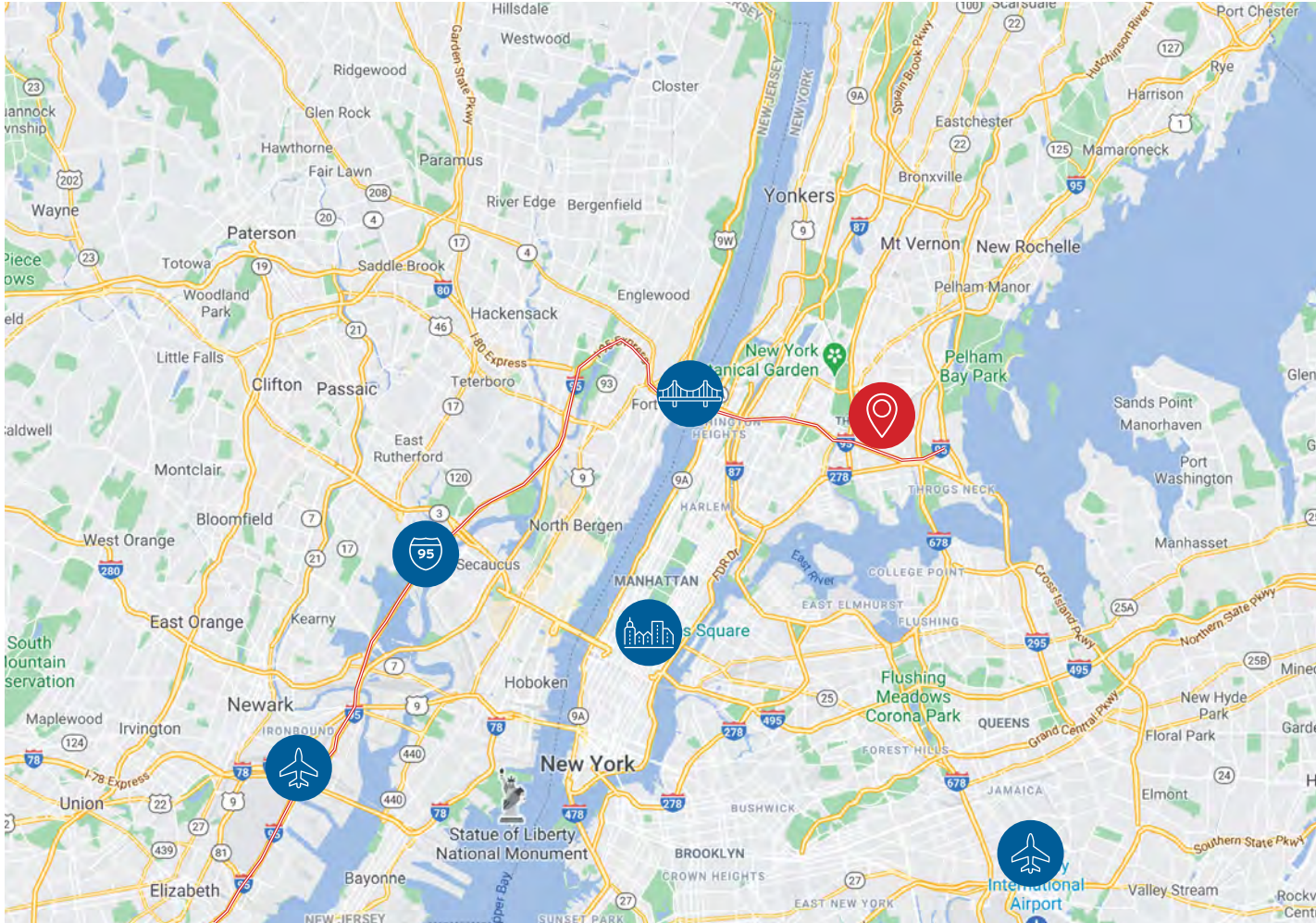
Location & Landmarks

1733 Eastchester Rd., Bronx, New York

MEDICAL AND OFFICE SPACE

17,128 SF

Ground + Second Floor



Key Landmarks



Address
1733 Eastchester Rd.
Bronx, NY



Interstate 95
10 Mile



George Washington Bridge
9 Miles



JFK Airport
20 Miles



Newark Airport
29 Miles



Manhattan
11 Miles