



Tribeca Retail for Lease  
Built Dental Practice  
All Medical and Adjacent Uses Sought

# 144 CHAMBERS STREET

South Side between West Broadway and Greenwich Street

# High Traffic | Steps to Subway Built Medical / Dental Retail Space

Ground – 1,600 SF

Basement– 1,600 SF

Sub Basement – 1,600 SF

Frontage – 18-Feet

Ceiling Heights

11-Feet Ground

8-Feet Basement

7-Feet Sub Basement

Term – Negotiable

Possession - Immediate

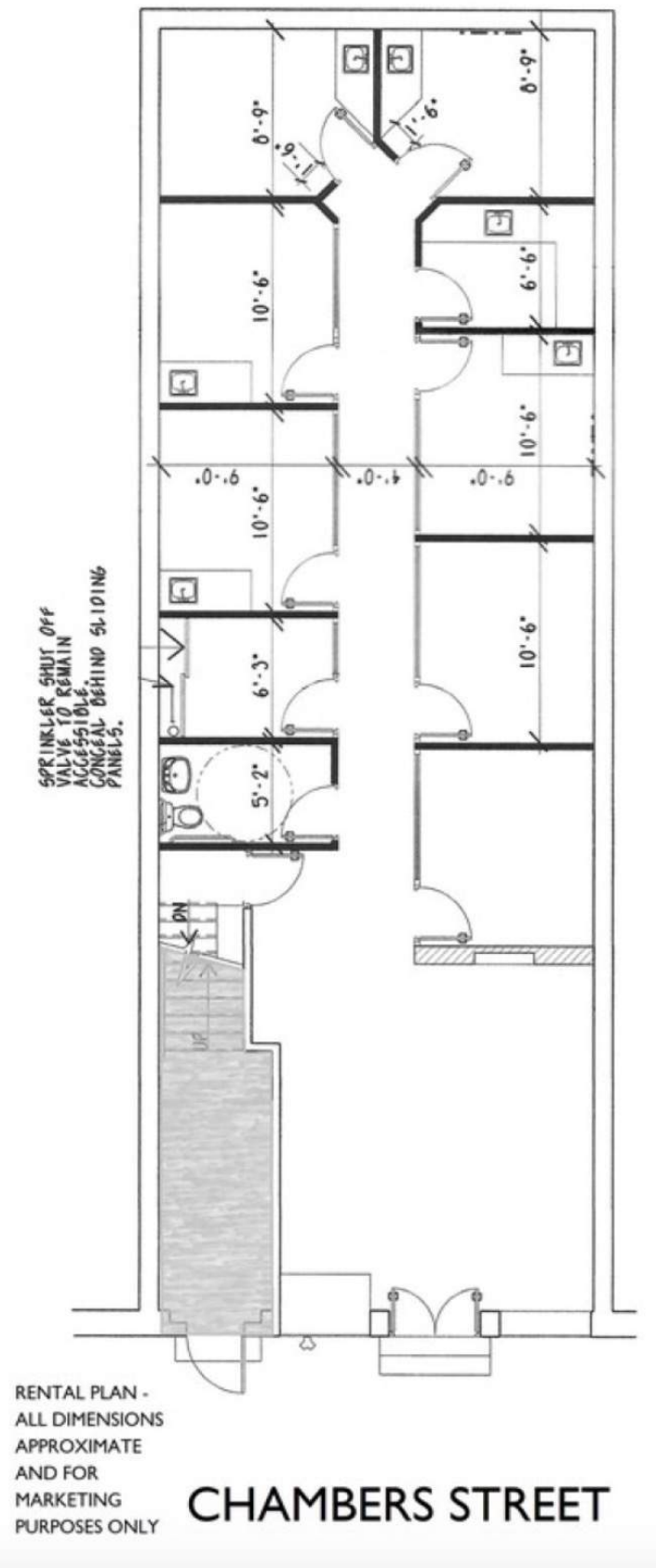


- EXAM ROOMS WITH PLUMBING
- CENTRAL LOCATION IN PROXIMITY TO FIDI /  
TRIBECA / TRANSPORTATION
- WELL-DESIGNED BUILD OUT





## Ground Floor Rental Plan





144 CHAMBERS  
STREET

Please Contact:  
Peter Weisman  
212.300.3077  
[peter@weismannyc.com](mailto:peter@weismannyc.com)