

RETAIL SPACE FOR LEASE

1407 W Wade Hampton Blvd | Greer, SC 29650

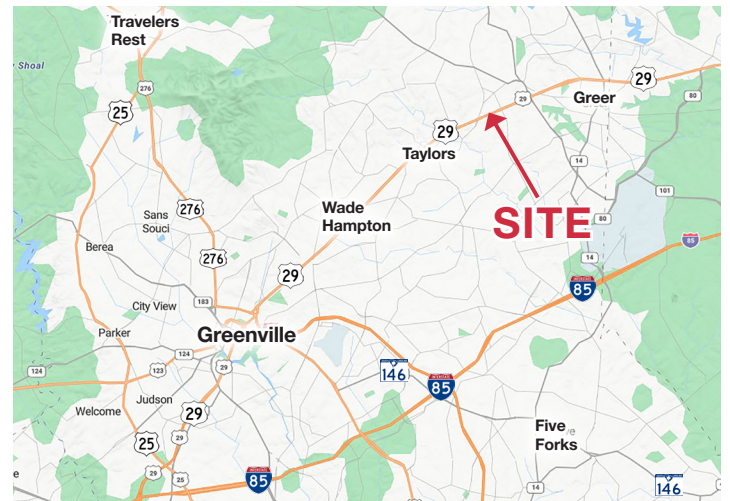
Available
±1,899 SF



PROPERTY HIGHLIGHTS

- **LEASE RATE: \$24.00/SF NNN**
- **NNNs: \$4.77/SF**
- Excellent space available in the heart of the Greer retail corridor on Wade Hampton Blvd
- One (1) ±1,899 SF space available (Unit E)
- Tenants include SC Gun Company, Joy of Tokyo, and H&R Block
- Located on The Home Depot Outparcel with strong traffic and retail growth in the immediate area
- Traffic Counts: Wade Hampton Blvd - 42,400 VPD
- Neighboring businesses include The Home Depot, Lowe's, Kohl's, Target, Hobby Lobby, Food Lion, Aspen Dental, Starbucks, Chick-Fil-A, Guthries, 7Brew, Panara Bread and many more

LOCATOR MAP



DEMOGRAPHICS

	2025	1 MILE	3 MILE	5 MILE
POPULATION		3,805	48,038	115,987
AVG HH INCOME		\$98,243	\$98,792	\$107,503
DAYTIME POP		2,784	14,044	29,375

NAI Earle Furman

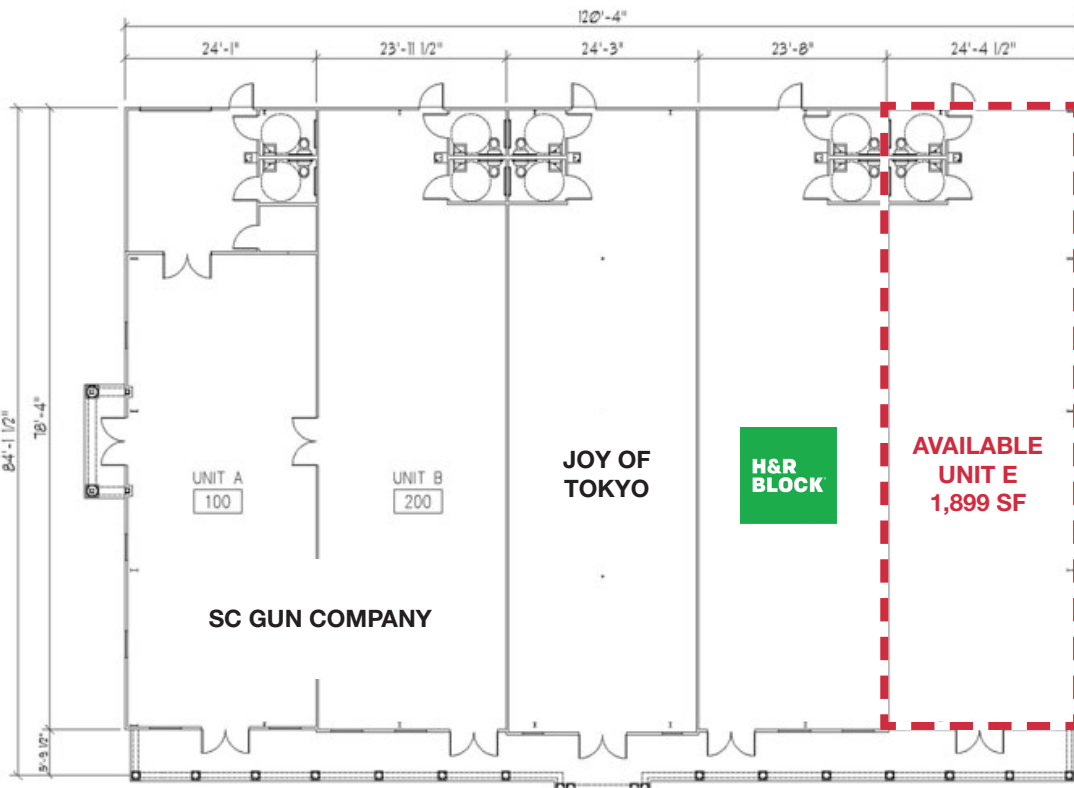
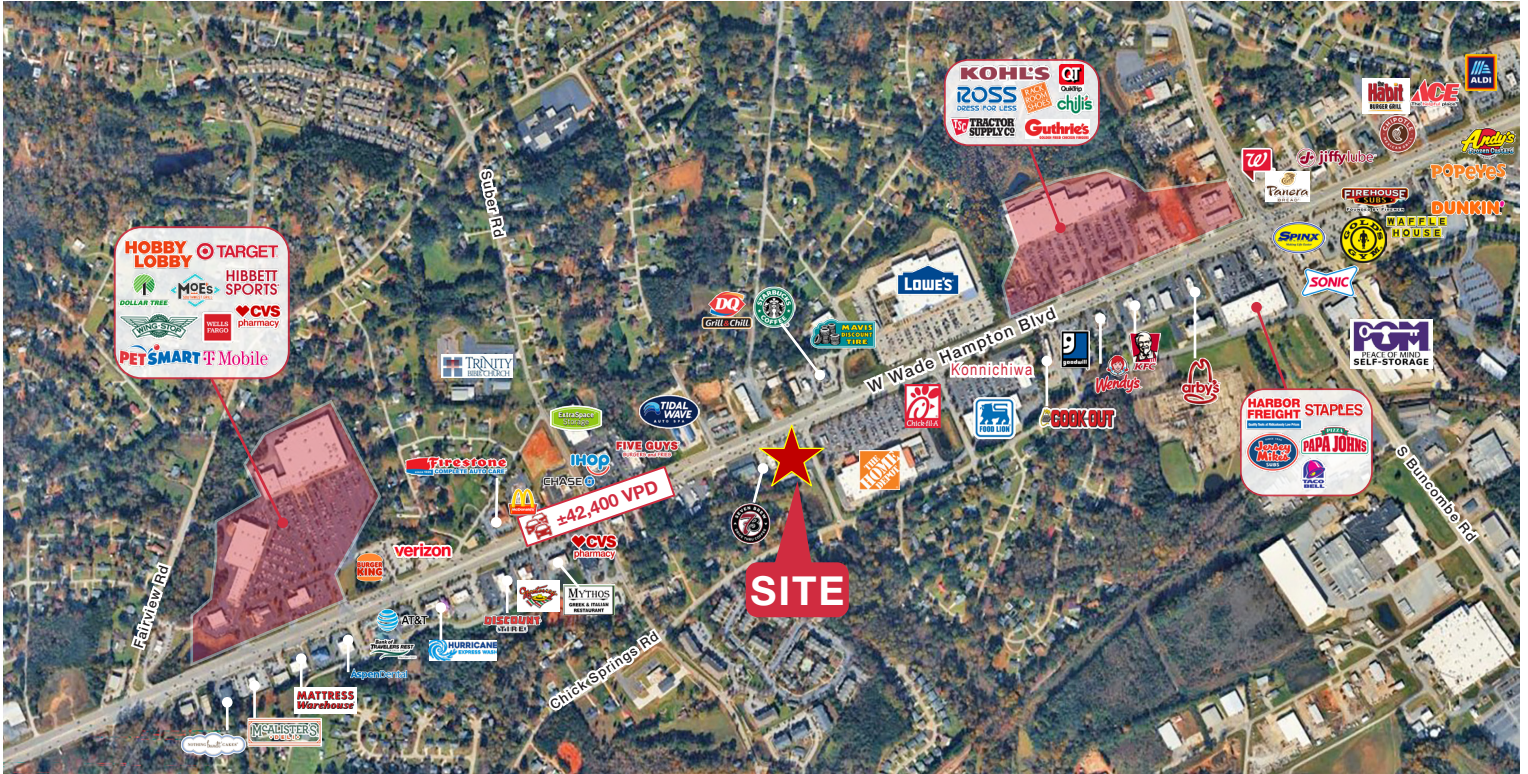
Jimmy Wright | Shareholder
864 678 5927 | jwright@naief.com

Jake Scott | Associate
864 293 2886 | jscott@naief.com

The information contained herein is deemed reliable but is not guaranteed. NAI Earle Furman makes no warranties or representations regarding the accuracy, completeness, or reliability of the information.

RETAIL SPACE FOR LEASE

1407 W Wade Hampton Blvd | Greer, SC 29650



The information contained herein is deemed reliable but is not guaranteed. NAI Earle Furman makes no warranties or representations regarding the accuracy, completeness, or reliability of the information. All parties are encouraged to independently verify all details, including but not limited to property condition, terms, and financial projections. Prices, terms, and availability are subject to change without notice.

Jimmy Wright | Shareholder
864 678 5927 | jwright@naief.com

Jake Scott | Associate
864 293 2886 | jscott@naief.com