

561

LEASE AVAILABILITY

561 Windsor Street, Somerville, MA 02143



LEE & ASSOCIATES



the hive

BOYNTON — YARDS

The Hive at 561 Windsor Street in Somerville, MA (The Taza Building) is a vibrant hub within the Boynton Yards neighborhood where entrepreneurs, artists, innovators, creatives, and advocates thrive, connecting and collaborating in a dynamic, supportive community of like-minded visionaries.



95,000 SF



Spaces ranging from 500 - 13,000 SF



4 Floors



On-Site Parking Available



On-Site Property Management



Shuttle service between Boynton Yards & Kendall/ MIT Red Line MBTA Station



The Hive at 561 Windsor Street, Somerville, MA cultivates creativity and celebrates diversity in the transformational Boynton Yards district. While some tenants of the building have called it their longtime home, many local artists and creators are new to the community - constantly molding, shaping & inspiring the neighborhood.



 Union Square Station
5 Minutes 

 Bluebikes
1 Minute 

 Logan Airport
25 Minutes 

 Kendall Square
8 Minutes 

7 Minutes 

20 Minutes 





561

the
hive
LITCHFIELD COUNTY
COMMUNITY CENTER

2nd Floor | Suite A200



12,798 RSF



58 Work Stations



10 Offices



4 Conference Rooms



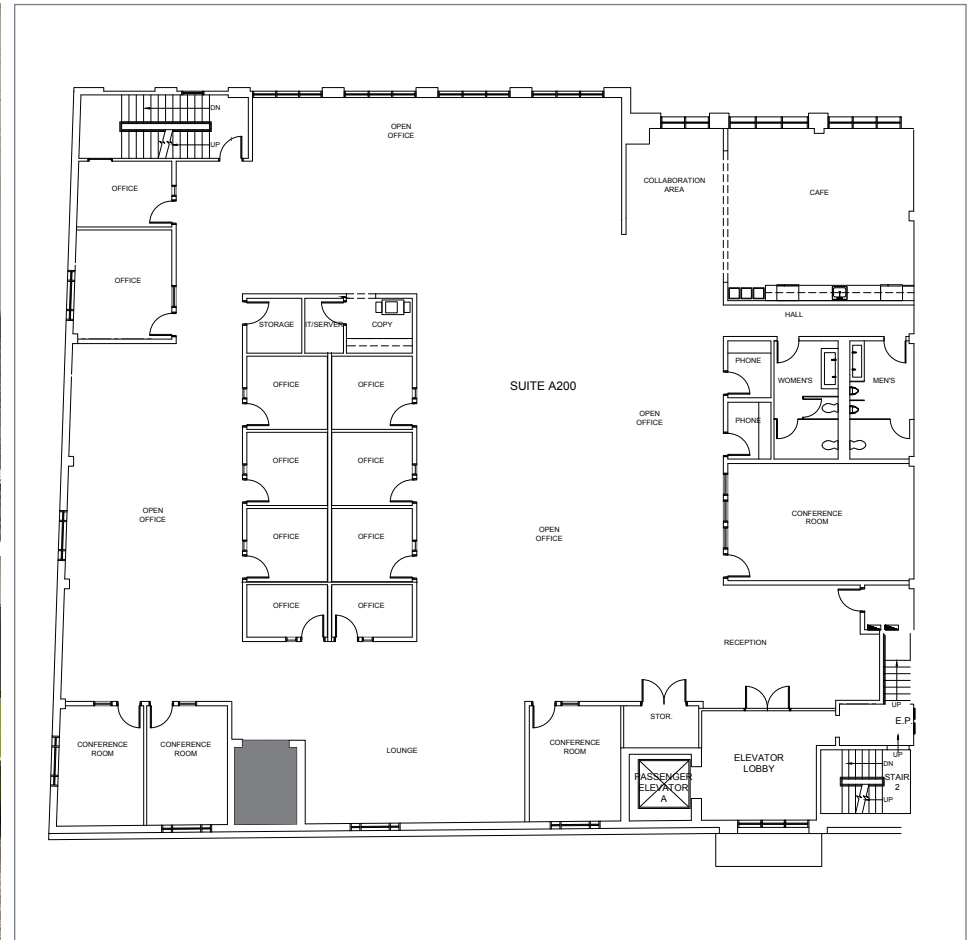
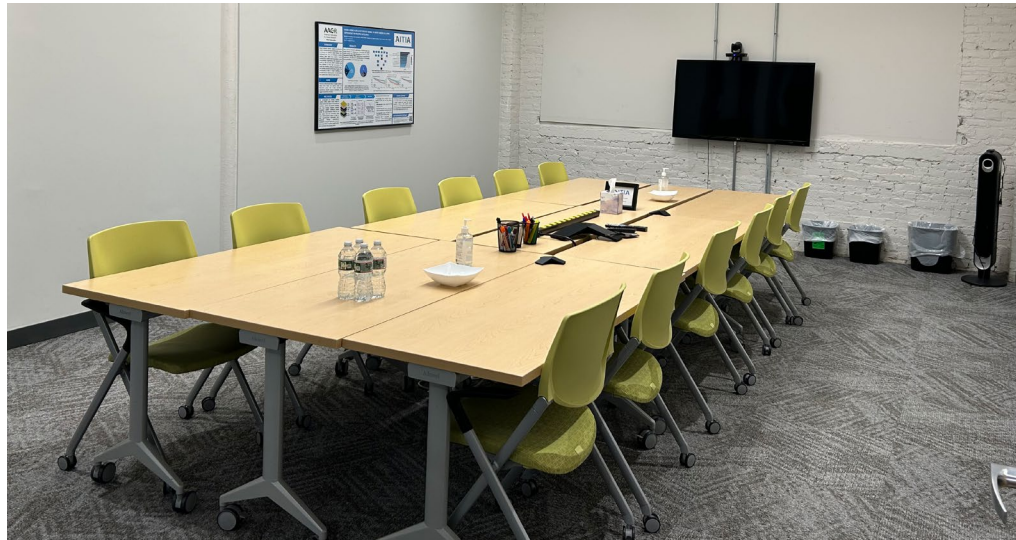
1 Cafe



Private Restrooms



18' Clear Height



2nd Floor | Suite B204



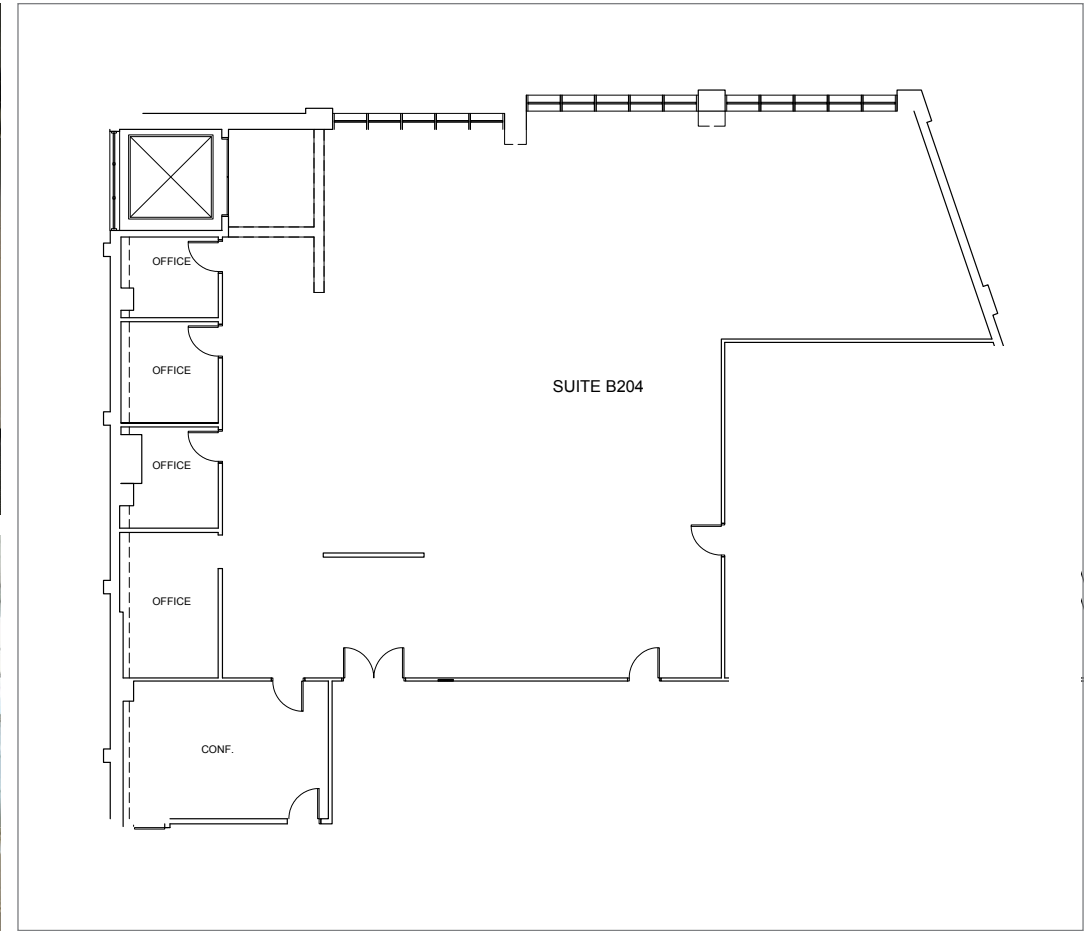
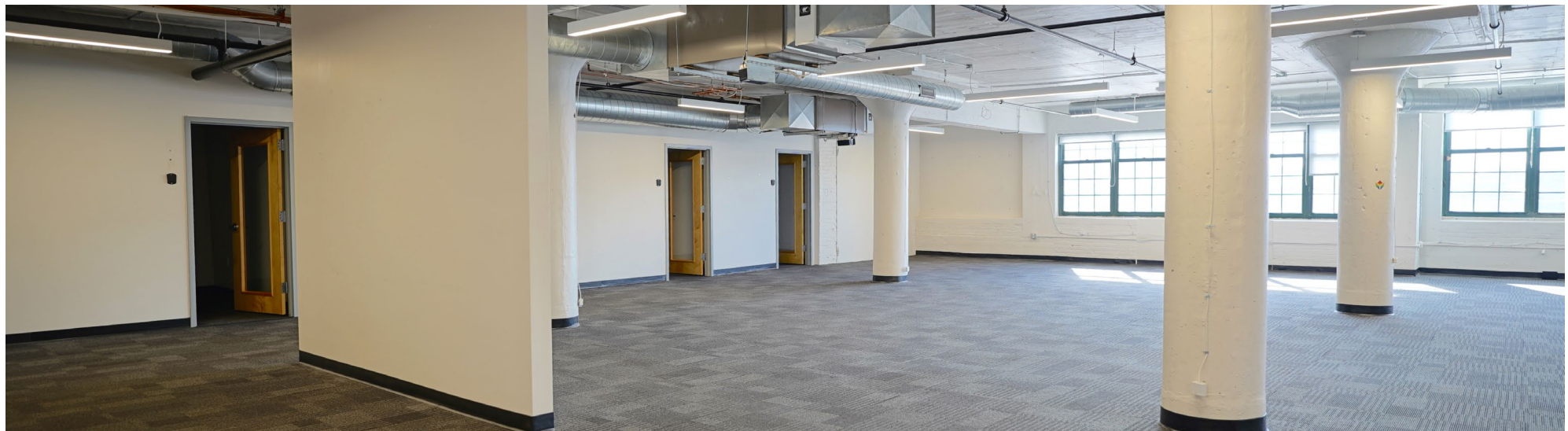
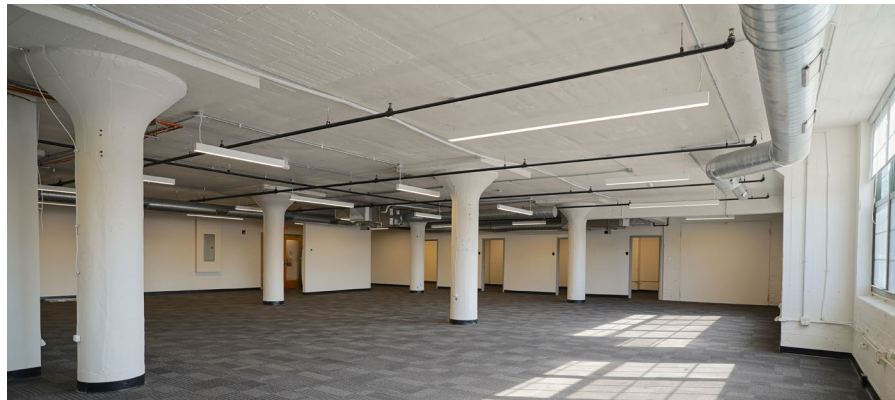
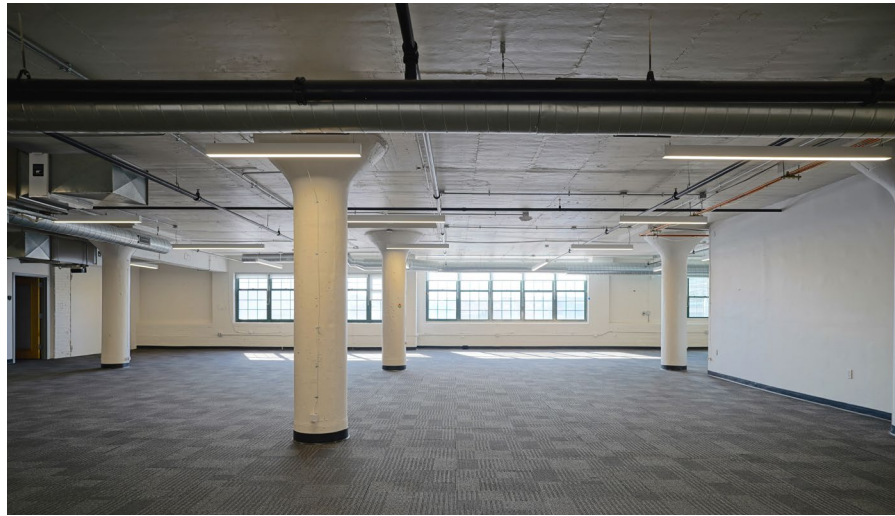
5,406 RSF



4 Offices



1 Conference Room



Mezzanine | Suite Bmz 3



5,406 RSF



2 Offices



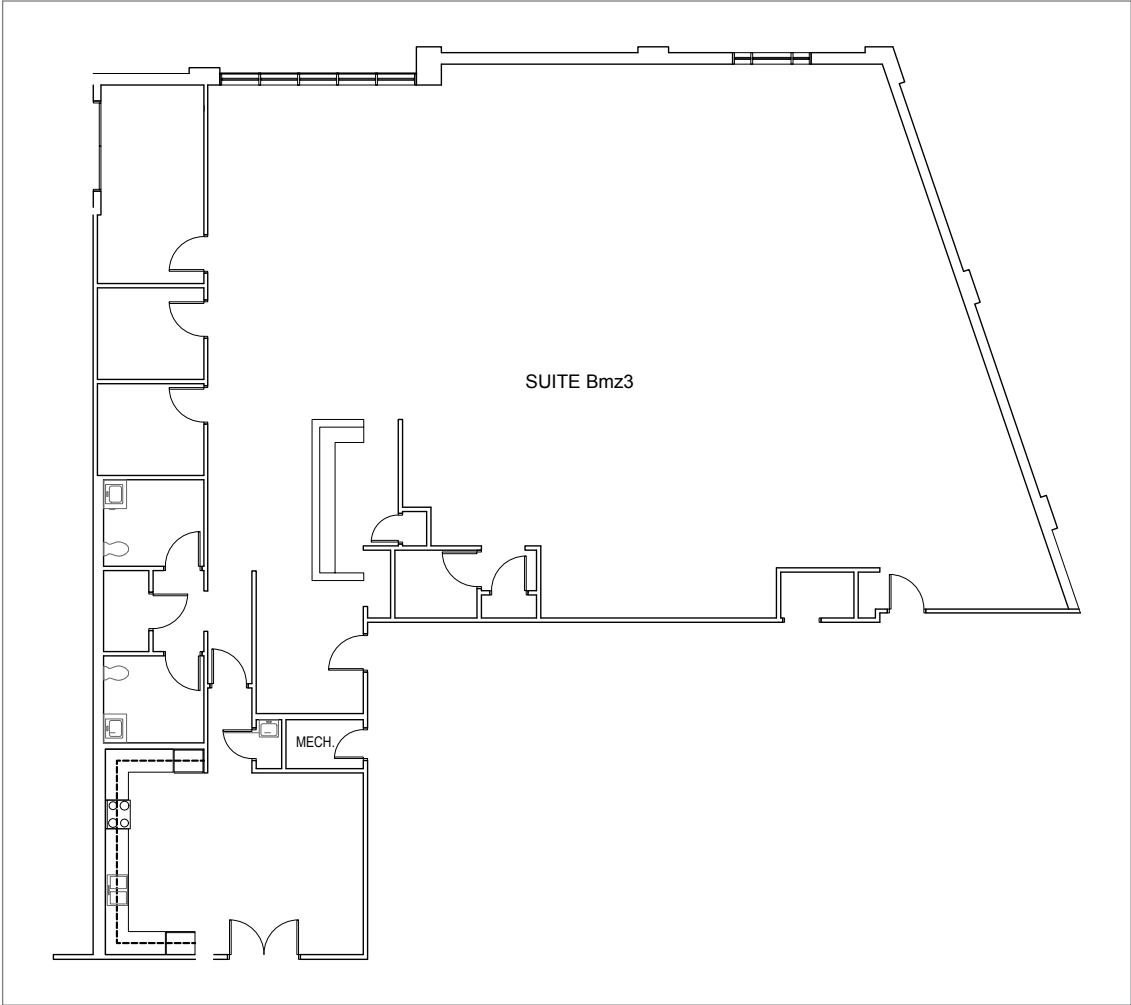
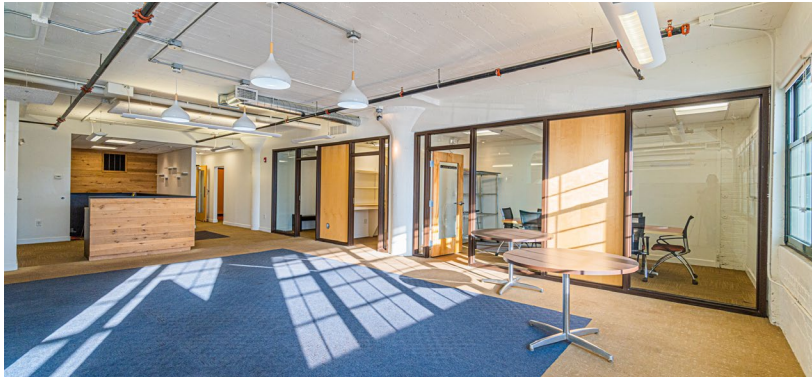
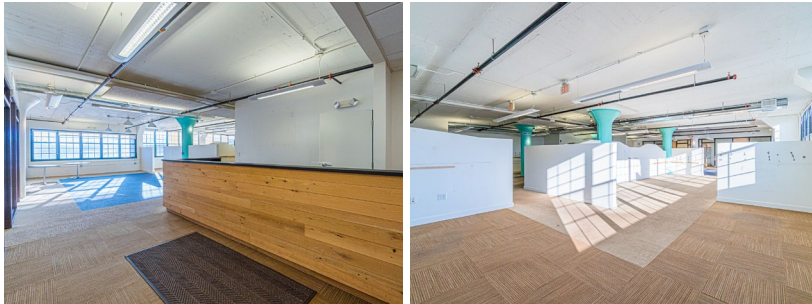
1 Conference Room



1 Full Kitchen



2 Restrooms



3rd Floor | Suite B302



7,140 RSF



3 Offices



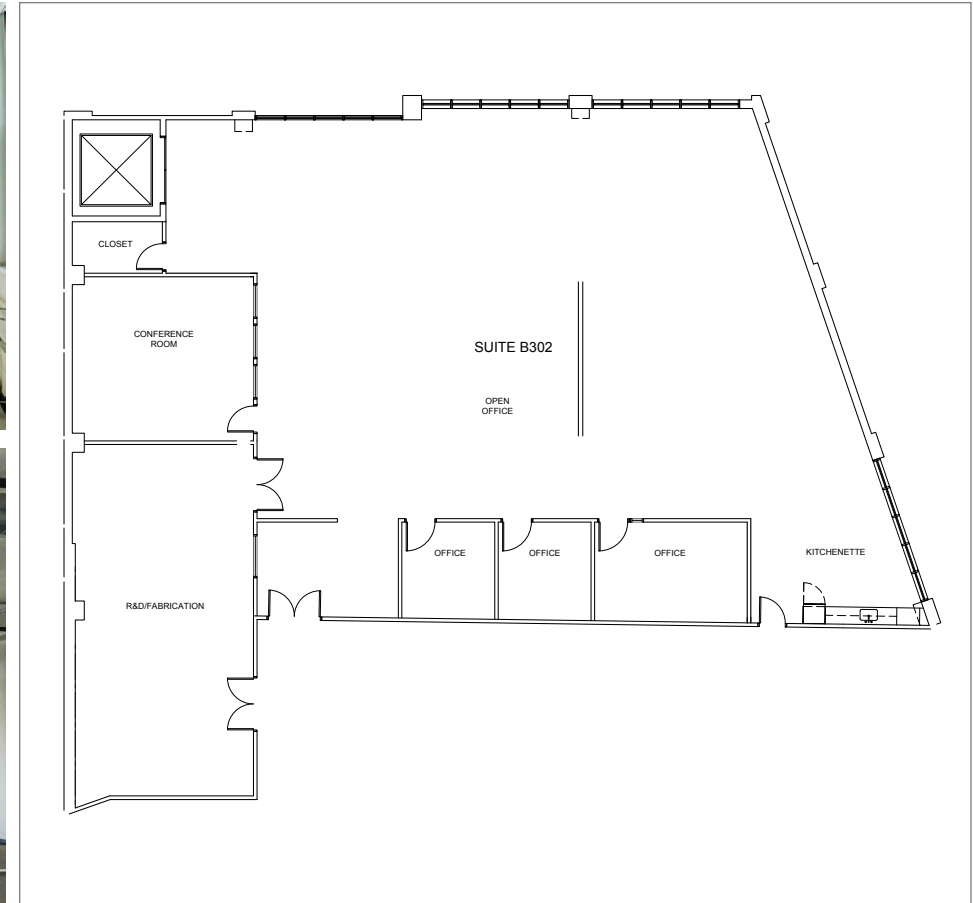
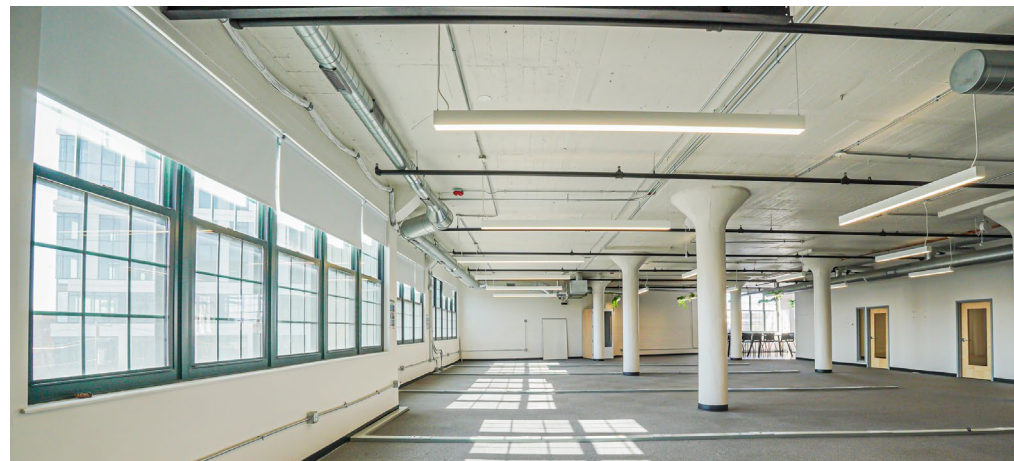
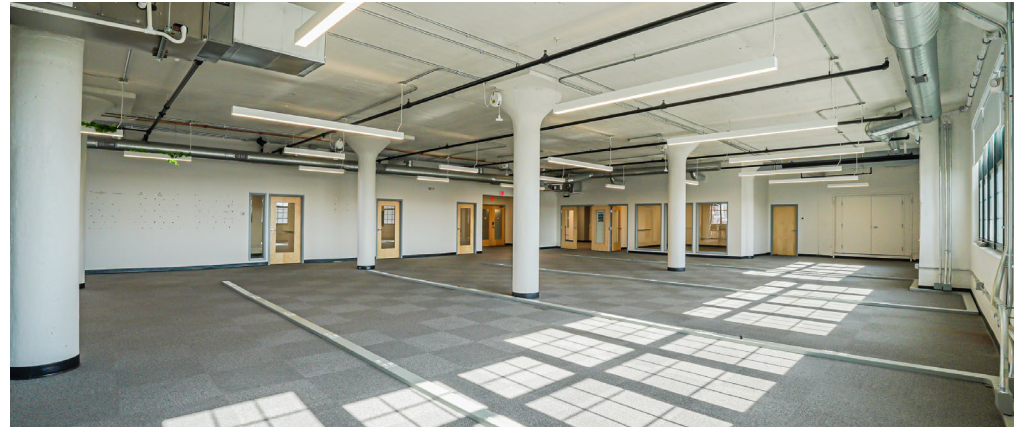
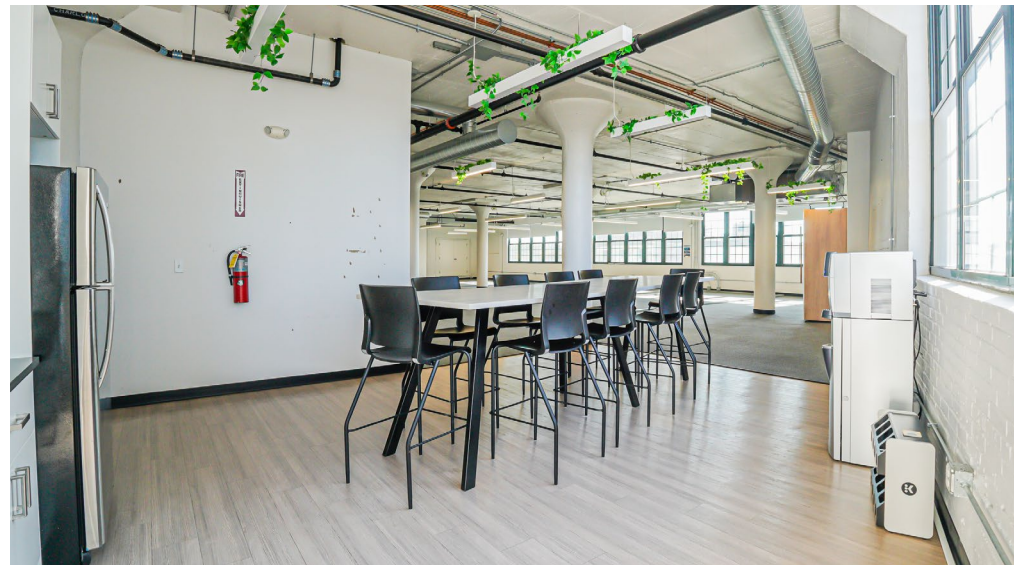
2 Conference Rooms



1 Full Kitchen



2 IT/Storage Closets



4th Floor | Suite B404



3,535 RSF



2 Private Offices



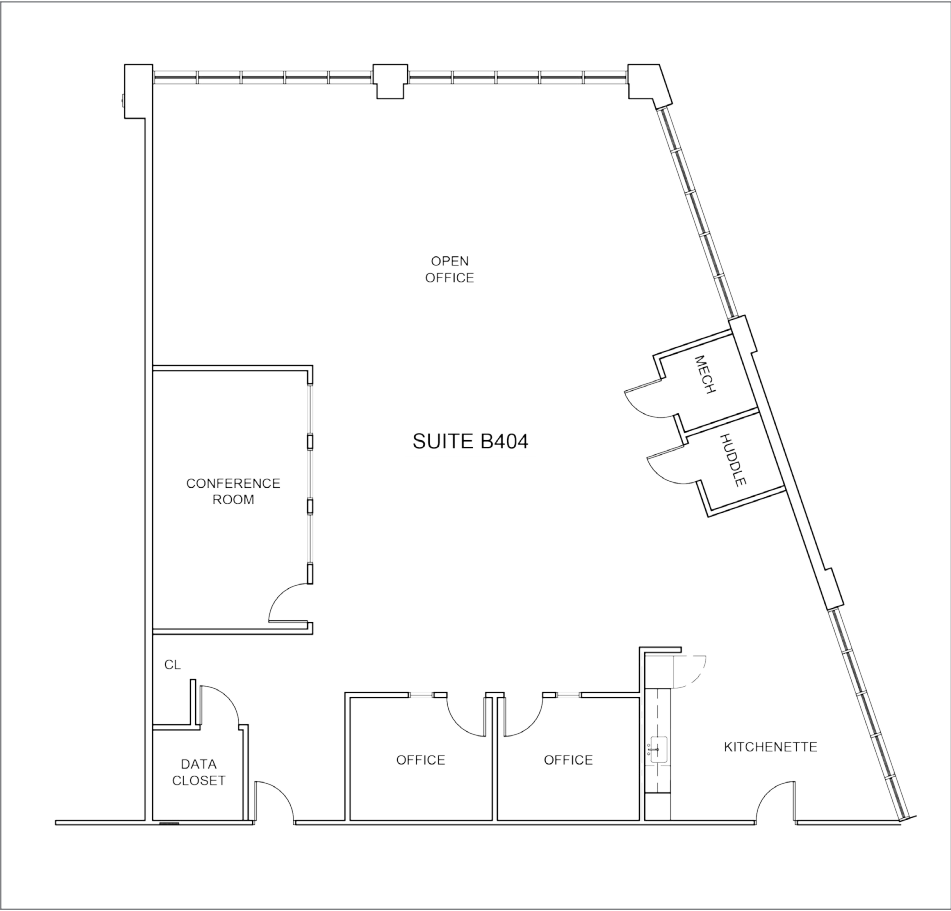
1 Conference Room



1 Kitchenette



2 IT/Storage Closets

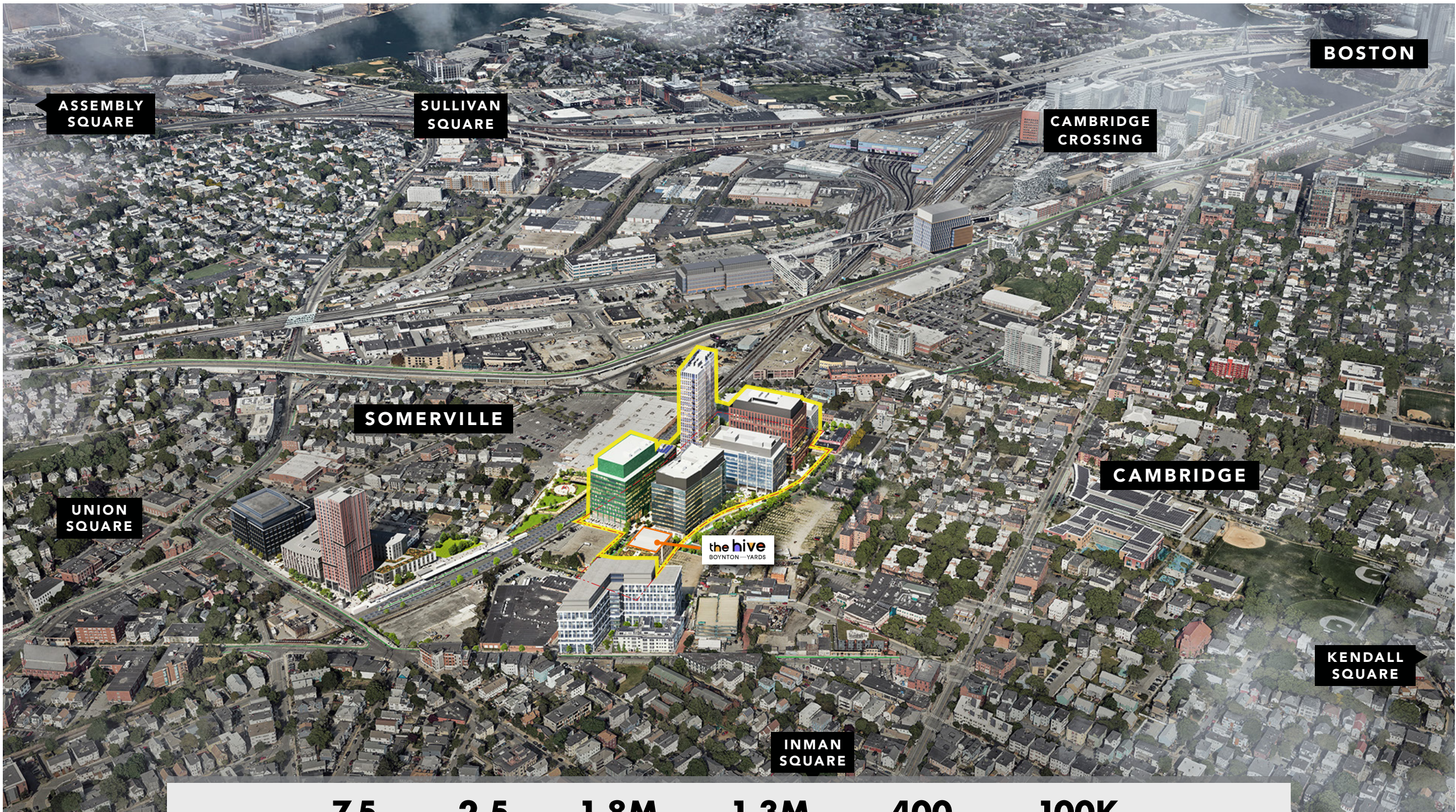


the hive

BOYNTON — YARDS

The Hive is located within Boynton Yards, an innovative mixed-use development located within the Kendall Square Mile.





BOSTON

ASSEMBLY SQUARE

SULLIVAN SQUARE

CAMBRIDGE CROSSING

SOMERVILLE

CAMBRIDGE

UNION SQUARE

the hive
BOYNTON—YARDS

KENDALL SQUARE

INMAN SQUARE

7.5
TOTAL
ACRES

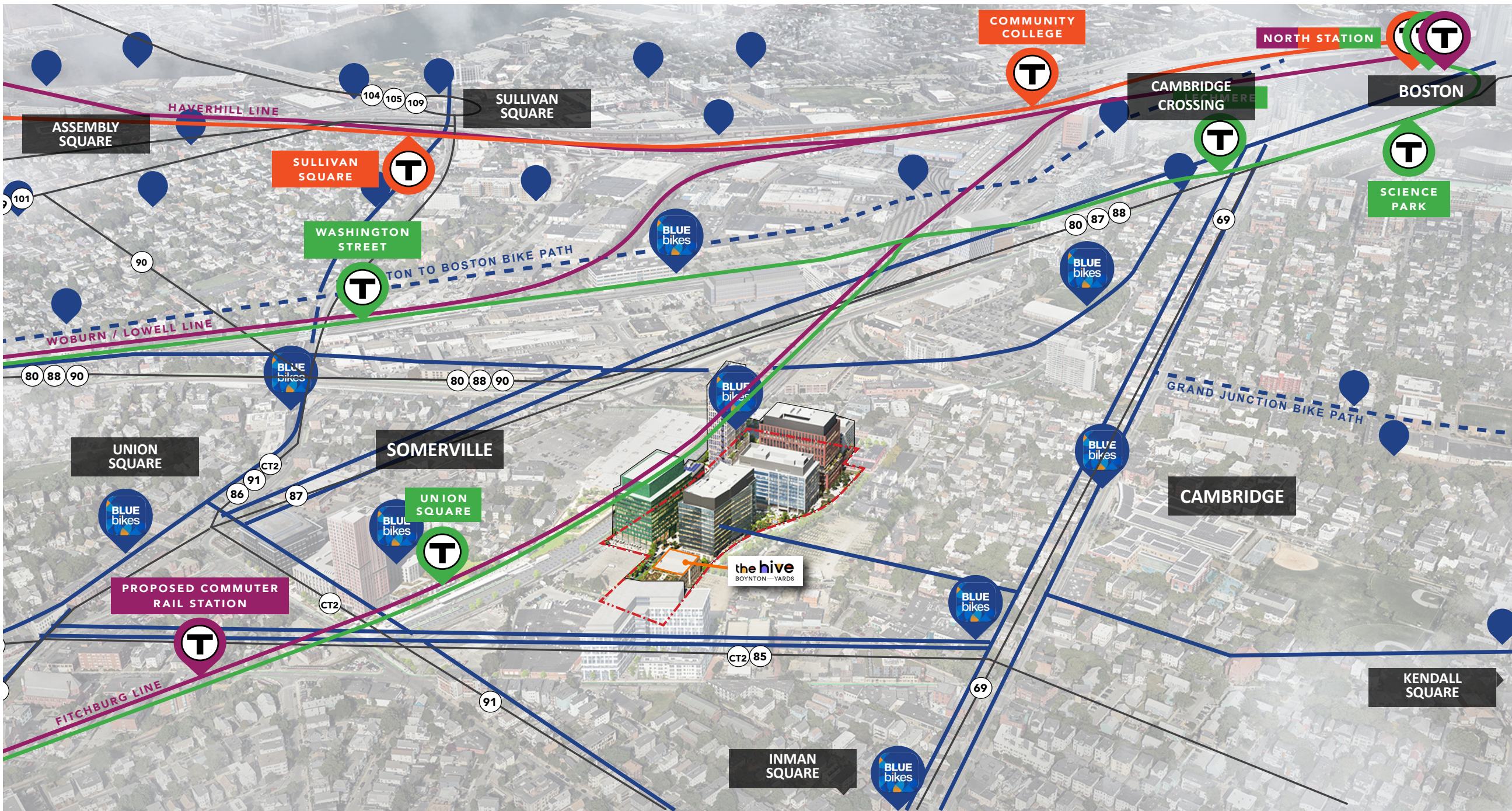
2.5
ACRES OF
OPEN SPACE



1.8M
SF APPROVED
MASTER PLANNED
DEVELOPMENT



1.3M
SF BEST-IN-CLASS
LAB/OFFICE SPACE

400
CUTTING-EDGE
RESIDENTIAL UNITS

100K
SF CREATIVE
ARTS BUILDING



 DEDICATED BIKE PATH
 PROTECTED BIKE LANES

 BLUE BIKES STATION WITHIN 5 MIN RIDE
 BLUE BIKES STATION



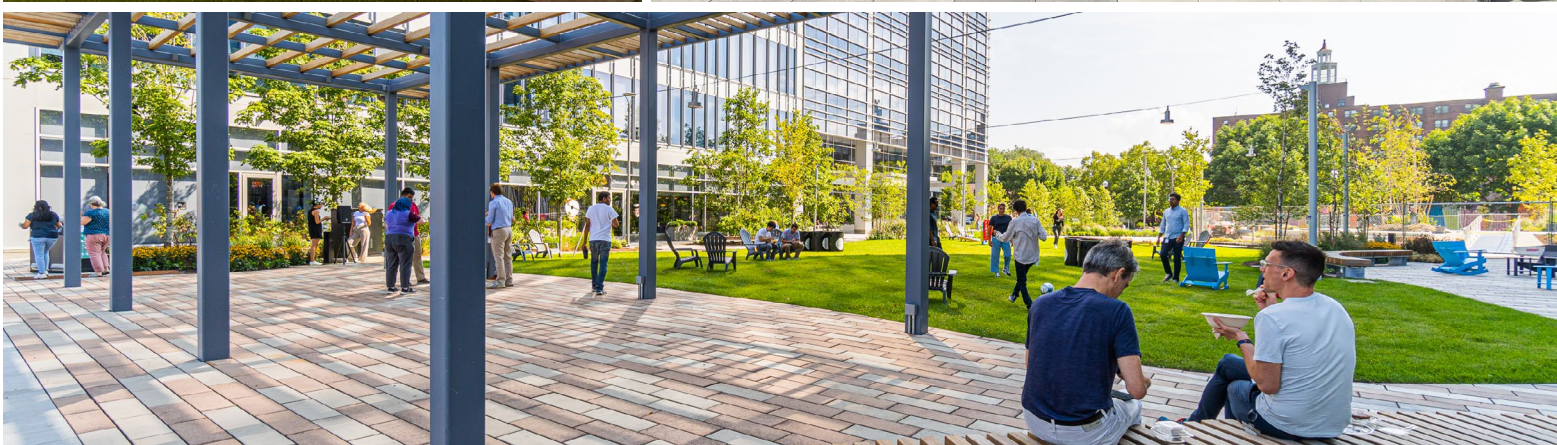
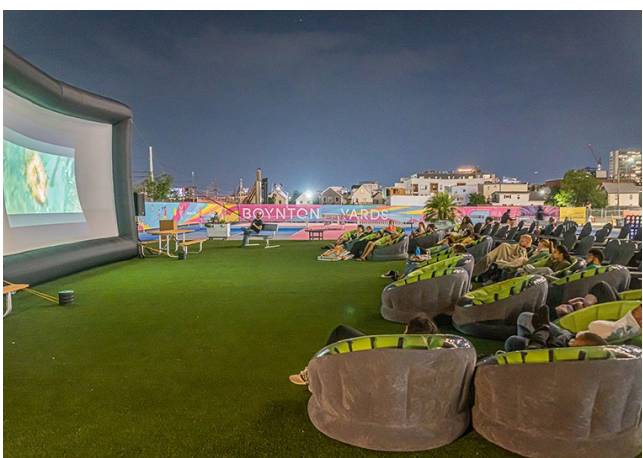
 BUS LINE

 GREEN LINE

 ORANGE LINE

 COMMUTER RAIL

AMENITIES





BOYNTON YARDS



boyntonyards.com



@boynton_yards

WHERE
SCIENCE + *Culture*
MERGE

For leasing information, please contact:

Stephanie Deering

Director

sdeering@lee-associates.com

781.608.5964

Scott Richmond

Principal

srichmond@lee-associates.com

617.733.1504



LEE & ASSOCIATES
COMMERCIAL REAL ESTATE SERVICES

211 Congress Street
Boston, MA 02110
lee-associates.com/boston

All information furnished regarding property for sale, rental or financing is from sources deemed reliable, but no warranty or representation is made to the accuracy thereof and same is submitted to errors, omissions, change of price, rental or other conditions prior to sale, lease or financing or withdrawal without notice. No liability of any kind is to be imposed on the broker herein.