

GOLDEN GATE PLAZA

INFORMATION PACKAGE

27777 Southfield Road
Lathrup Village, MI 48076

Up to 4,184 SQ. FT. Available



FOR LEASING INQUIRIES, CONTACT ROB KROCHMAL:
248.867.3304 • ROBK@SURNOW.COM

TABLE OF CONTENTS

Aerial	3
Site Plan	4
Floor Plan	5
Site Highlights	6
About The Surnow Company	7

AERIAL



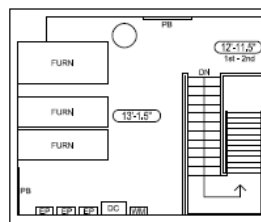
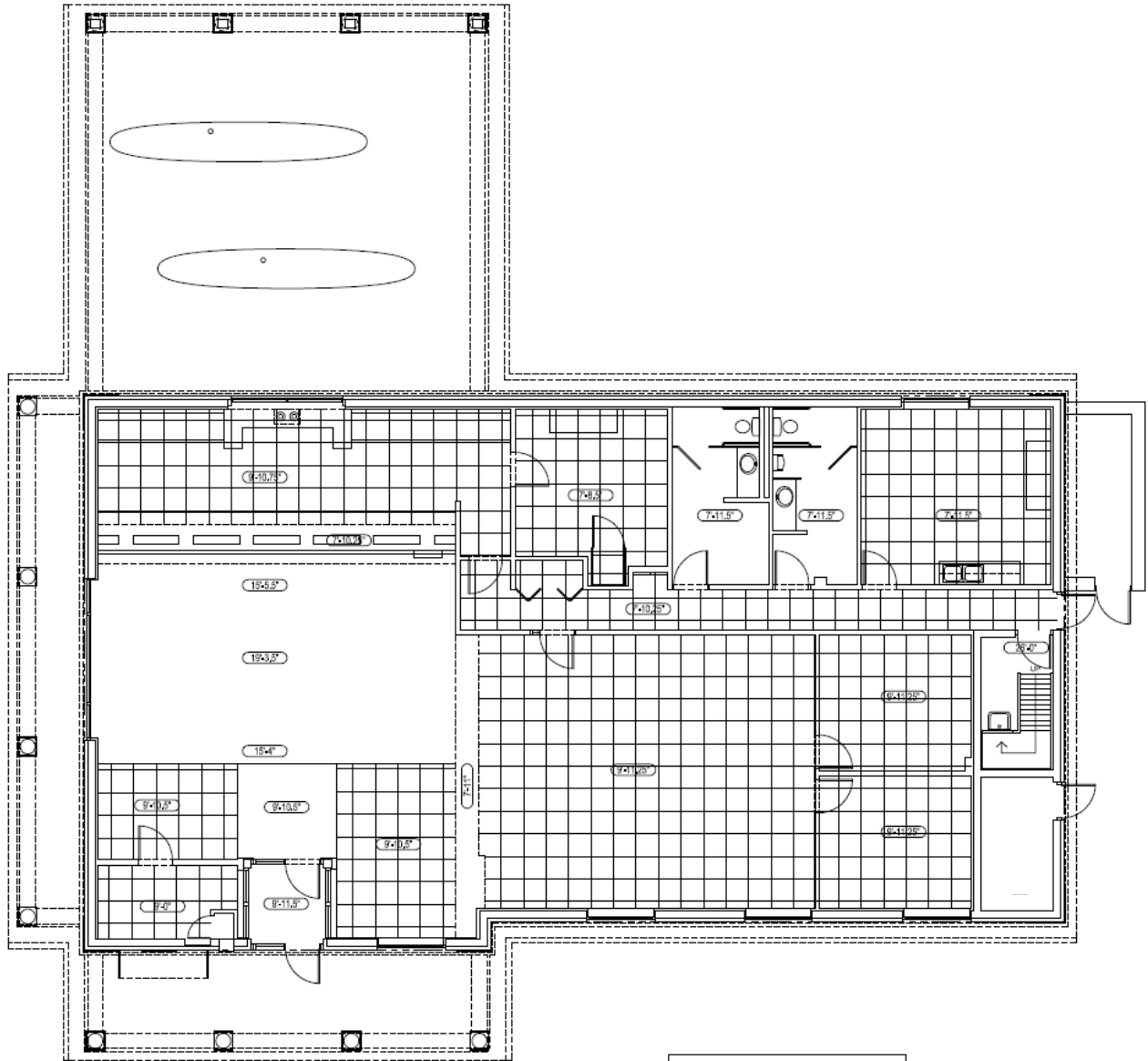
SITE PLAN

27777 Southfield Road, Lathrup Village, MI 48076



FLOOR PLAN

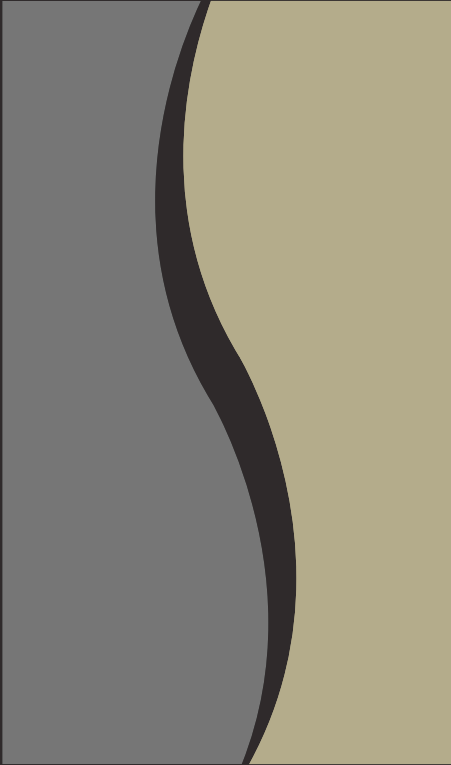
27777 Southfield Road, Lathrup Village, MI 48076



Mezzanine Level

SITE HIGHLIGHTS

- Excellent exposure to northbound and southbound vehicles traveling Southfield Road – 43,205 vehicles per day
- At the corner of a signalized intersection for maximum exposure and easy ingress/egress
- Site is surrounded by dense residential and office population
- Convenient and abundant parking for your customers and employees
- Multiple curb cuts for easy accessibility to the site
- Large façade for unparalleled signage opportunity and monument signage
- Easily accessible by surrounding communities via Southfield Freeway and I-696
- Outstanding national co-tenancy in the immediate trade area including Panera Bread, FedEx Office, H&R Block, Ashley Stewart, and Lane Bryant
- Located kitty-corner to Lathrup Village's City Hall and police station, which draws crowds for community events, food truck rallies, and other city functions



ABOUT US

The Surnow Company is a family owned, full service commercial real estate development, property management, asset management and brokerage firm.

We have a focused specialty in repurposing and redeveloping urban and suburban retail, office, and medical properties to fulfill our clients' needs, and to create greater value in the community each property is a part of.

Email or call today to discuss your commercial real estate needs, and we will proactively assist in achieving them.