

OUTSTANDING LOCATION NOW AVAILABLE!



+/- 39,206 SF MULTIPURPOSE INDUSTRIAL PROPERTY **12221 W. Feerick Street, Wauwatosa, WI 53222**



PROPERTY FEATURES

- Excellent, Central Suburban Milwaukee Area Location
- High Ceiling Clear Height
- LED Motion Sensor Warehouse Lighting
- Outstanding Labor Pool Demographics
- Will-Call & Showroom Area
- Nicely Remodeled Offices
- Multiple Loading Options
- Immediate Freeway Access



FOR MORE INFORMATION, CONTACT:

KEVIN BARRY, CCIM

414-254-8206

kbarry@barrycre.com

DAVID BARRY, CCIM, SIOR

414-803-4988

dbarry@barrycre.com

The information contained herein was lawfully obtained from sources we consider reliable but may contain errors, omissions, approximations or outdated information. The Barry Company, Inc., its employees and independent contractors make no representations or warranties whatsoever regarding: (1) the accuracy of the information contained herein and (2) the physical or environmental condition of this property or any part of this property. Prospective purchasers are strongly encouraged to conduct an independent investigation of the condition of this property.

FOR LEASE

12221 W. FEERICK STREET
WAUWATOSA, WI 53222

Asking Lease Rate: \$6.50/ SF NET



BUILDING SPECIFICATIONS

Building Size:	+/- 39,206 SF
Office Size:	+/- 5,378 SF (NIC Shop Office)
Number of Floors:	One
Minimum Divisible:	39,206 SF
Maximum Contiguous:	39,206 SF
Year Built/Renovated:	1971/2013
Ceiling Height:	Middle Warehouse: 20' @ +/-25,788 SF, South Warehouse: 26' @ +/- 8,040 SF
Construction Type:	Masonry & Decorative Brick
Drive-in Doors:	One Approx. 15'W x 14'W in South Warehouse
Dock Doors:	Middle Warehouse 3 x 8'H w/ Levelers; South Warehouse: 2 x 10'H w/Levelers
Dumpster Door:	1 - 10'H x 15'W
Box Truck Door:	1 w/ Exterior Area for Multiple Box Trucks (Included in Parking Number) For Will-Call
Power:	600 Amp, 208/120V - To Be Verified
A/C:	Office Area w/ Ceiling Fans in Warehouse
Floor Drains:	None
Lighting:	LED Motion Sensor in Warehouse
Sprinkler:	None
Lavatories:	4 - Men's and Women's in Office & Warehouse
Present Use:	Office/Warehouse w/ Will-Call

SITE DETAILS

Site Size:	Approx. 1.89 Acres
Parking Area:	Approx. 54 Striped + 2 HC
Zoning:	M2 Heavy Industrial
Public Transportation:	Yes - 124th & Feerick #28
Utilities	Municipal
2023 Property Taxes:	\$39,225.57
Taxkey:	258-0002-004

FOR MORE INFORMATION, CONTACT:

Kevin Barry
414-254-8206
kbarry@barrycre.com
David Barry
414-803-4988
dbarry@barrycre.com

1232 NORTH EDISON STREET | MILWAUKEE, WI 53202 | 414-271-1870 MAIN | 414-271-1478 FAX |
WWW.BARRYCRE.COM

THE INFORMATION CONTAINED HEREIN WAS LAWFULLY OBTAINED FROM SOURCES WE CONSIDER RELIABLE BUT MAY CONTAIN ERRORS, OMISSIONS, APPROXIMATIONS OR OUTDATED INFORMATION. BARRY COMMERCIAL REAL ESTATE SERVICES, INC. (THE BARRY COMPANY), ITS EMPLOYEES AND INDEPENDENT CONTRACTORS MAKE NO REPRESENTATIONS OR WARRANTIES WHATSOEVER REGARDING: (1) THE ACCURACY OF THE INFORMATION CONTAINED HEREIN AND (2) THE PHYSICAL OR ENVIRONMENTAL CONDITION OF THIS PROPERTY OR ANY PART OF THIS PROPERTY. PROSPECTIVE PURCHASERS ARE STRONGLY ENCOURAGED TO CONDUCT AN INDEPENDENT INVESTIGATION OF THE CONDITION OF THIS PROPERTY

FOR LEASE

12221 W. FEERICK STREET
WAUWATOSA, WI 53222

Asking Lease Rate: \$6.50/ SF NET



Commercial Real Estate Services
Since 1921

FOR MORE INFORMATION, CONTACT:

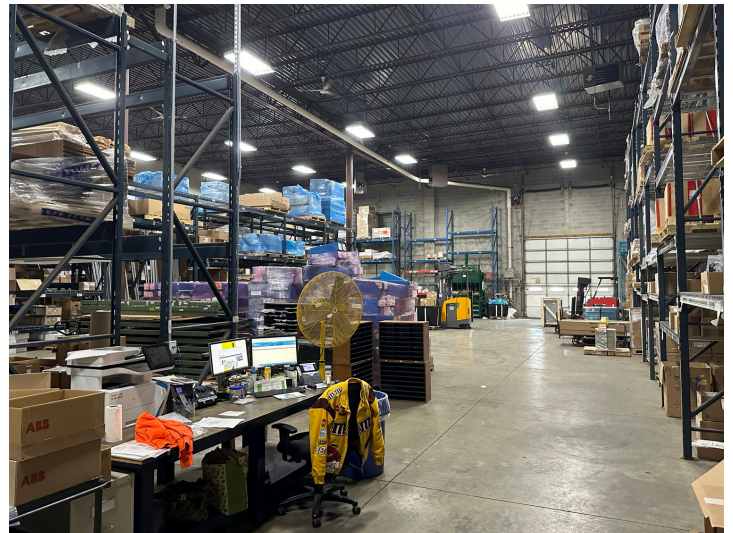
Kevin Barry
414-254-8206

kbarry@barrycre.com

David Barry
414-803-4988

dbarry@barrycre.com

INTERIOR PHOTOS



1232 NORTH EDISON STREET | MILWAUKEE, WI 53202 | 414-271-1870 MAIN | 414-271-1478 FAX |
WWW.BARRYCRE.COM

THE INFORMATION CONTAINED HEREIN WAS LAWFULLY OBTAINED FROM SOURCES WE CONSIDER RELIABLE BUT MAY CONTAIN ERRORS, OMISSIONS, APPROXIMATIONS OR OUTDATED INFORMATION. BARRY COMMERCIAL REAL ESTATE SERVICES, INC. (THE BARRY COMPANY), ITS EMPLOYEES AND INDEPENDENT CONTRACTORS MAKE NO REPRESENTATIONS OR WARRANTIES WHATSOEVER REGARDING: (1) THE ACCURACY OF THE INFORMATION CONTAINED HEREIN AND (2) THE PHYSICAL OR ENVIRONMENTAL CONDITION OF THIS PROPERTY OR ANY PART OF THIS PROPERTY. PROSPECTIVE PURCHASERS ARE STRONGLY ENCOURAGED TO CONDUCT AN INDEPENDENT INVESTIGATION OF THE CONDITION OF THIS PROPERTY

FOR LEASE

12221 W. FEERICK STREET
WAUWATOSA, WI 53222

Asking Lease Rate: \$6.50/ SF NET

WAREHOUSE PHOTOS



Commercial Real Estate Services
Since 1921

FOR MORE INFORMATION, CONTACT:

Kevin Barry
414-254-8206

kbarry@barrycre.com

David Barry
414-803-4988

dbarry@barrycre.com



1232 NORTH EDISON STREET | MILWAUKEE, WI 53202 | 414-271-1870 MAIN | 414-271-1478 FAX |
WWW.BARRYCRE.COM

THE INFORMATION CONTAINED HEREIN WAS LAWFULLY OBTAINED FROM SOURCES WE CONSIDER RELIABLE BUT MAY CONTAIN ERRORS, OMISSIONS, APPROXIMATIONS OR OUTDATED INFORMATION. BARRY COMMERCIAL REAL ESTATE SERVICES, INC. (THE BARRY COMPANY), ITS EMPLOYEES AND INDEPENDENT CONTRACTORS MAKE NO REPRESENTATIONS OR WARRANTIES WHATSOEVER REGARDING: (1) THE ACCURACY OF THE INFORMATION CONTAINED HEREIN AND (2) THE PHYSICAL OR ENVIRONMENTAL CONDITION OF THIS PROPERTY OR ANY PART OF THIS PROPERTY. PROSPECTIVE PURCHASERS ARE STRONGLY ENCOURAGED TO CONDUCT AN INDEPENDENT INVESTIGATION OF THE CONDITION OF THIS PROPERTY

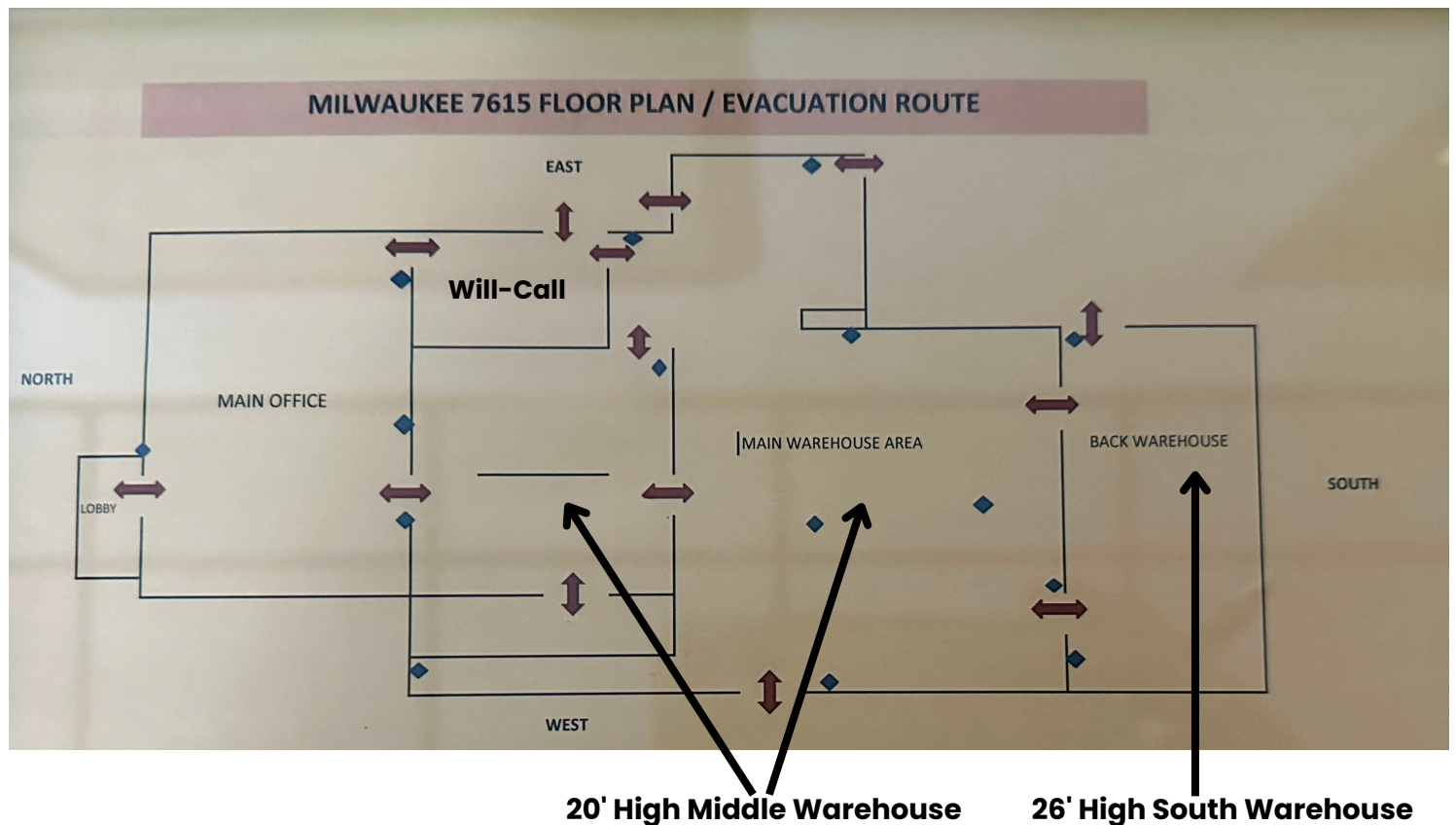
FOR LEASE

12221 W. FEERICK STREET
WAUWATOSA, WI 53222

Asking Lease Rate: \$6.50/ SF NET



GENERAL FLOORPLAN



Drawing not necessarily to scale

FOR MORE INFORMATION, CONTACT:

Kevin Barry
414-254-8206

kbarry@barrycre.com

David Barry
414-803-4988

dbarry@barrycre.com

1232 NORTH EDISON STREET | MILWAUKEE, WI 53202 | 414-271-1870 MAIN | 414-271-1478 FAX |
WWW.BARRYCRE.COM

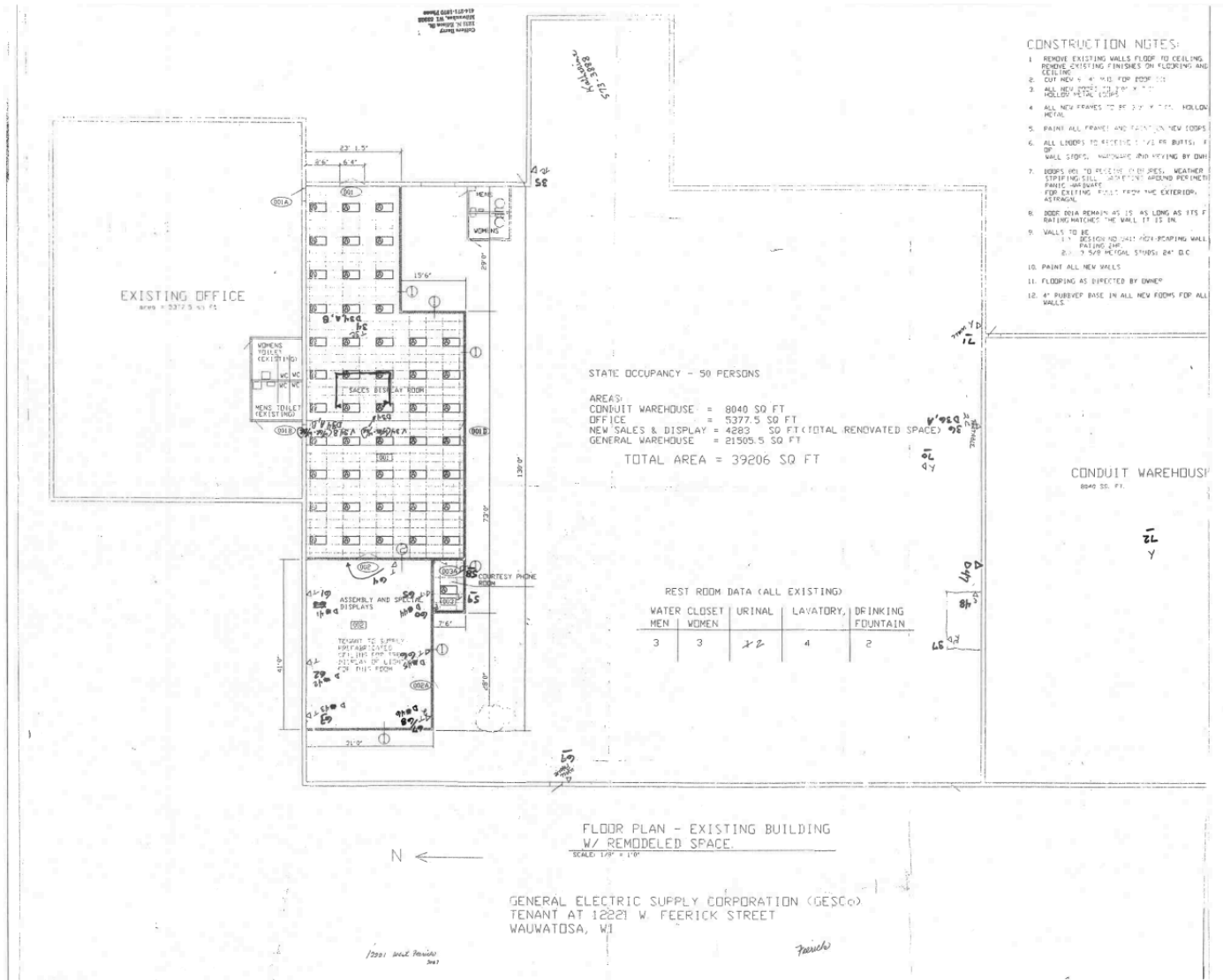
THE INFORMATION CONTAINED HEREIN WAS LAWFULLY OBTAINED FROM SOURCES WE CONSIDER RELIABLE BUT MAY CONTAIN ERRORS, OMISSIONS, APPROXIMATIONS OR OUTDATED INFORMATION. BARRY COMMERCIAL REAL ESTATE SERVICES, INC. (THE BARRY COMPANY), ITS EMPLOYEES AND INDEPENDENT CONTRACTORS MAKE NO REPRESENTATIONS OR WARRANTIES WHATSOEVER REGARDING: (1) THE ACCURACY OF THE INFORMATION CONTAINED HEREIN AND (2) THE PHYSICAL OR ENVIRONMENTAL CONDITION OF THIS PROPERTY OR ANY PART OF THIS PROPERTY. PROSPECTIVE PURCHASERS ARE STRONGLY ENCOURAGED TO CONDUCT AN INDEPENDENT INVESTIGATION OF THE CONDITION OF THIS PROPERTY

FOR LEASE

12221 W. FEERICK STREET
WAUWATOSA, WI 53222

Asking Lease Rate: \$6.50/ SF NET

GENERAL FLOORPLAN



Drawing not necessarily to scale

FOR MORE INFORMATION, CONTACT:

Kevin Barry
414-254-8206

kbarry@barrycre.com

David Barry
414-803-4988

dbarry@barrycre.com

1232 NORTH EDISON STREET | MILWAUKEE, WI 53202 | 414-271-1870 MAIN | 414-271-1478 FAX |
WWW.BARRYCRE.COM

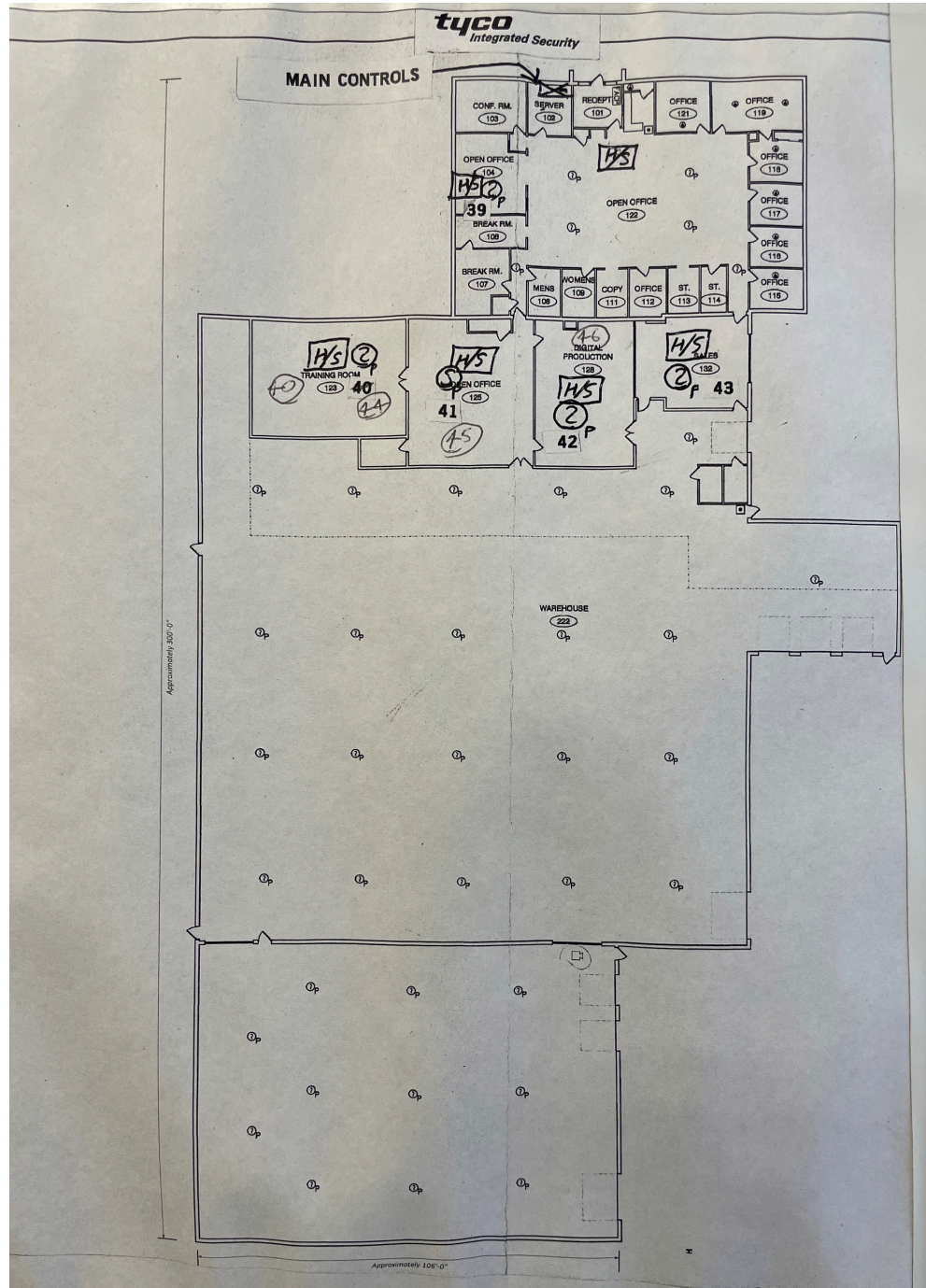
THE INFORMATION CONTAINED HEREIN WAS LAWFULLY OBTAINED FROM SOURCES WE CONSIDER RELIABLE BUT MAY CONTAIN ERRORS, OMISSIONS, APPROXIMATIONS OR OUTDATED INFORMATION. BARRY COMMERCIAL REAL ESTATE SERVICES, INC. (THE BARRY COMPANY), ITS EMPLOYEES AND INDEPENDENT CONTRACTORS MAKE NO REPRESENTATIONS OR WARRANTIES WHATSOEVER REGARDING: (1) THE ACCURACY OF THE INFORMATION CONTAINED HEREIN AND (2) THE PHYSICAL OR ENVIRONMENTAL CONDITION OF THIS PROPERTY OR ANY PART OF THIS PROPERTY. PROSPECTIVE PURCHASERS ARE STRONGLY ENCOURAGED TO CONDUCT AN INDEPENDENT INVESTIGATION OF THE CONDITION OF THIS PROPERTY

FOR LEASE

12221 W. FEERICK STREET
WAUWATOSA, WI 53222

Asking Lease Rate: \$6.50/ SF NET

GENERAL FLOORPLAN



FOR MORE INFORMATION, CONTACT:

Kevin Barry
414-254-8206
kbarry@barrycre.com

David Barry
414-803-4988
dbarry@barrycre.com

Drawing not necessarily to scale

1232 NORTH EDISON STREET | MILWAUKEE, WI 53202 | 414-271-1870 MAIN | 414-271-1478 FAX |
WWW.BARRYCRE.COM

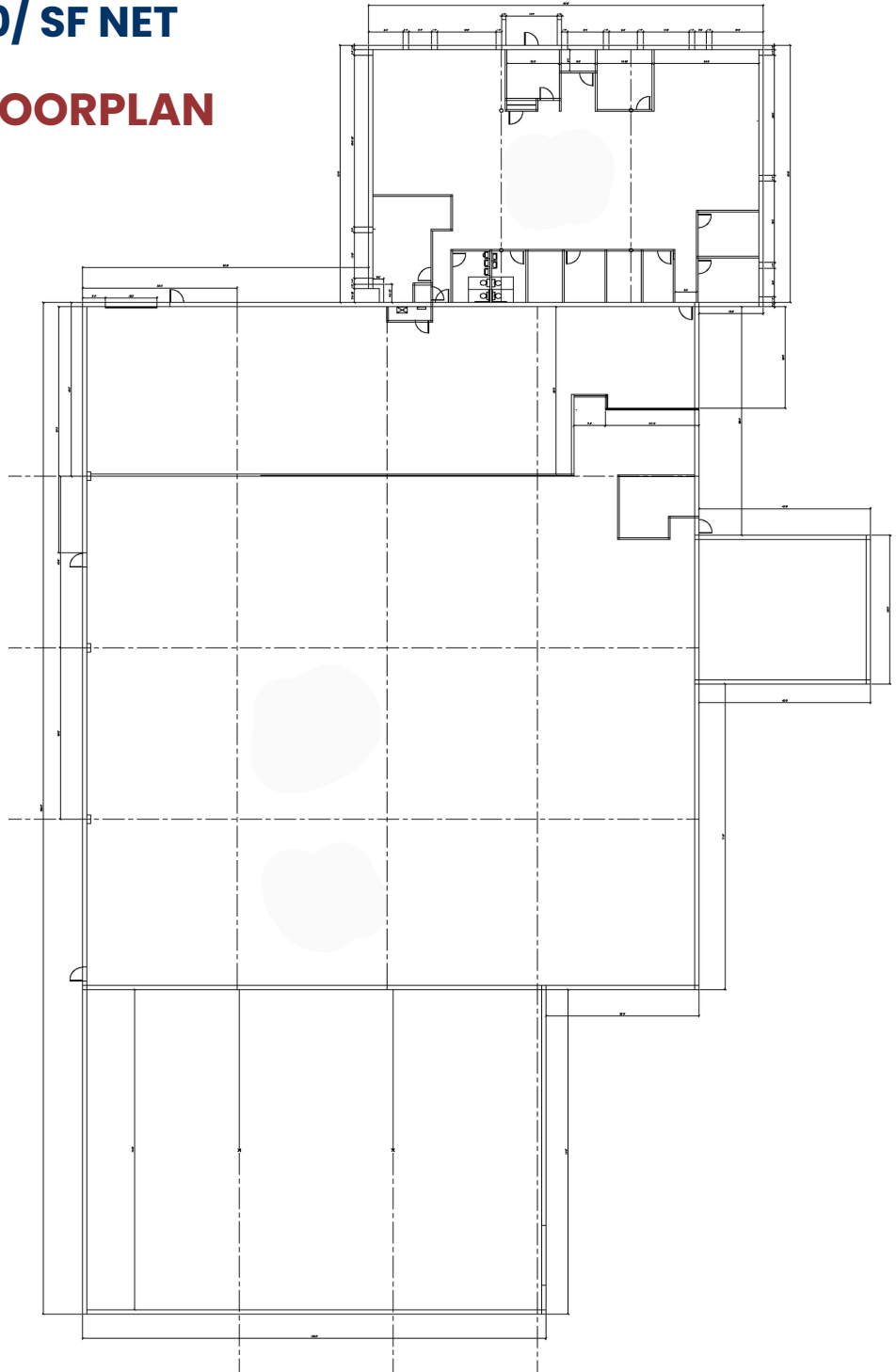
THE INFORMATION CONTAINED HEREIN WAS LAWFULLY OBTAINED FROM SOURCES WE CONSIDER RELIABLE BUT MAY CONTAIN ERRORS, OMISSIONS, APPROXIMATIONS OR OUTDATED INFORMATION. BARRY COMMERCIAL REAL ESTATE SERVICES, INC. (THE BARRY COMPANY), ITS EMPLOYEES AND INDEPENDENT CONTRACTORS MAKE NO REPRESENTATIONS OR WARRANTIES WHATSOEVER REGARDING: (1) THE ACCURACY OF THE INFORMATION CONTAINED HEREIN AND (2) THE PHYSICAL OR ENVIRONMENTAL CONDITION OF THIS PROPERTY OR ANY PART OF THIS PROPERTY. PROSPECTIVE PURCHASERS ARE STRONGLY ENCOURAGED TO CONDUCT AN INDEPENDENT INVESTIGATION OF THE CONDITION OF THIS PROPERTY

FOR LEASE

12221 W. FEERICK STREET
WAUWATOSA, WI 53222

Asking Lease Rate: \$6.50/ SF NET

POTENTIAL CONCEPT FLOORPLAN



Drawing is not as built

FOR MORE INFORMATION, CONTACT:

Kevin Barry
414-254-8206
kbarry@barrycre.com

David Barry
414-803-4988
dbarry@barrycre.com

1232 NORTH EDISON STREET | MILWAUKEE, WI 53202 | 414-271-1870 MAIN | 414-271-1478 FAX |
WWW.BARRYCRE.COM

THE INFORMATION CONTAINED HEREIN WAS LAWFULLY OBTAINED FROM SOURCES WE CONSIDER RELIABLE BUT MAY CONTAIN ERRORS, OMISSIONS, APPROXIMATIONS OR OUTDATED INFORMATION. BARRY COMMERCIAL REAL ESTATE SERVICES, INC. (THE BARRY COMPANY), ITS EMPLOYEES AND INDEPENDENT CONTRACTORS MAKE NO REPRESENTATIONS OR WARRANTIES WHATSOEVER REGARDING: (1) THE ACCURACY OF THE INFORMATION CONTAINED HEREIN AND (2) THE PHYSICAL OR ENVIRONMENTAL CONDITION OF THIS PROPERTY OR ANY PART OF THIS PROPERTY. PROSPECTIVE PURCHASERS ARE STRONGLY ENCOURAGED TO CONDUCT AN INDEPENDENT INVESTIGATION OF THE CONDITION OF THIS PROPERTY

BROKER DISCLOSURE TO NON-RESIDENTIAL CUSTOMERS

1 Prior to negotiating on your behalf the Broker must provide you the following disclosure statement:

2 **BROKER DISCLOSURE TO CUSTOMERS**

3 You are a customer of the broker. The broker is either an agent of another party in the transaction or a subagent of another broker
4 who is the agent of another party in the transaction. The broker, or a salesperson acting on behalf of the broker, may provide
5 brokerage services to you. Whenever the broker is providing brokerage services to you, the broker owes you, the customer, the
6 following duties:

- 7 ■ The duty to provide brokerage services to you fairly and honestly.
- 8 ■ The duty to exercise reasonable skill and care in providing brokerage services to you.
- 9 ■ The duty to provide you with accurate information about market conditions within a reasonable time if you request it, unless
10 disclosure of the information is prohibited by law.
- 11 ■ The duty to disclose to you in writing certain material adverse facts about a property, unless disclosure of the information is
12 prohibited by law (See Lines 47-55).
- 13 ■ The duty to protect your confidentiality. Unless the law requires it, the broker will not disclose your confidential information or the
14 confidential information of other parties (See Lines 22-39).
- 15 ■ The duty to safeguard trust funds and other property the broker holds.
- 16 ■ The duty, when negotiating, to present contract proposals in an objective and unbiased manner and disclose the advantages and
17 disadvantages of the proposals.

18 Please review this information carefully. A broker or salesperson can answer your questions about brokerage services, but if you
19 need legal advice, tax advice, or a professional home inspection, contact an attorney, tax advisor, or home inspector.

20 This disclosure is required by section 452.135 of the Wisconsin statutes and is for information only. It is a plain-language summary of
21 a broker's duties to a customer under section 452.133 (1) of the Wisconsin statutes.

22 **CONFIDENTIALITY NOTICE TO CUSTOMERS**

23 BROKER WILL KEEP CONFIDENTIAL ANY INFORMATION GIVEN TO BROKER IN CONFIDENCE, OR ANY INFORMATION
24 OBTAINED BY BROKER THAT HE OR SHE KNOWS A REASONABLE PERSON WOULD WANT TO BE KEPT CONFIDENTIAL,
25 UNLESS THE INFORMATION MUST BE DISCLOSED BY LAW OR YOU AUTHORIZE THE BROKER TO DISCLOSE PARTICULAR
26 INFORMATION. A BROKER SHALL CONTINUE TO KEEP THE INFORMATION CONFIDENTIAL AFTER BROKER IS NO LONGER
27 PROVIDING BROKERAGE SERVICES TO YOU.

28 THE FOLLOWING INFORMATION IS REQUIRED TO BE DISCLOSED BY LAW:

- 29 1. MATERIAL ADVERSE FACTS, AS DEFINED IN SECTION 452.01 (5g) OF THE WISCONSIN STATUTES (SEE LINES 47-55).
 - 30 2. ANY FACTS KNOWN BY THE BROKER THAT CONTRADICT ANY INFORMATION INCLUDED IN A WRITTEN INSPECTION
31 REPORT ON THE PROPERTY OR REAL ESTATE THAT IS THE SUBJECT OF THE TRANSACTION.
- 32 TO ENSURE THAT THE BROKER IS AWARE OF WHAT SPECIFIC INFORMATION YOU CONSIDER CONFIDENTIAL, YOU MAY LIST
33 THAT INFORMATION BELOW (SEE LINES 35-36). AT A LATER TIME, YOU MAY ALSO PROVIDE THE BROKER WITH OTHER
34 INFORMATION YOU CONSIDER TO BE CONFIDENTIAL.

35 **CONFIDENTIAL INFORMATION:** _____

36

37 **NON-CONFIDENTIAL INFORMATION** (The following information may be disclosed by Broker): _____

38

39 (INSERT INFORMATION YOU AUTHORIZE THE BROKER TO DISCLOSE SUCH AS FINANCIAL QUALIFICATION INFORMATION.)

40 **CONSENT TO TELEPHONE SOLICITATION**

41 I/We agree that the Broker and any affiliated settlement service providers (for example, a mortgage company or title company) may
42 call our/my home or cell phone numbers regarding issues, goods and services related to the real estate transaction until I/we
43 withdraw this consent in writing. **List Home/Cell Numbers:** _____

44 **SEX OFFENDER REGISTRY**

45 Notice: You may obtain information about the sex offender registry and persons registered with the registry by contacting the
46 Wisconsin Department of Corrections on the Internet at: <http://offender.doc.state.wi.us/public/> or by phone at 608-240-5830.

47 **DEFINITION OF MATERIAL ADVERSE FACTS**

48 A "material adverse fact" is defined in Wis. Stat. § 452.01(5g) as an adverse fact that a party indicates is of such significance, or that
49 is generally recognized by a competent licensee as being of such significance to a reasonable party, that it affects or would affect
50 the party's decision to enter into a contract or agreement concerning a transaction or affects or would affect the party's decision
51 about the terms of such a contract or agreement. An "adverse fact" is defined in Wis. Stat. § 452.01(1e) as a condition or occurrence
52 that a competent licensee generally recognizes will significantly and adversely affect the value of the property, significantly reduce
53 the structural integrity of improvements to real estate, or present a significant health risk to occupants of the property; or information
54 that indicates that a party to a transaction is not able to or does not intend to meet his or her obligations under a contract or
55 agreement made concerning the transaction.

No representation is made as to the legal validity of any provision or the adequacy of any provision in any specific transaction.

Copyright 2007 by Wisconsin REALTORS® Association

Drafted by Attorney Debra Peterson Conrad