



EQT | EXETER



4802 North Sam Houston Parkway - Suite 500

Houston, TX

Building Size: 55,200 SF | 18,376 SF of Industrial Space Available

VISIT EQTEXETER.COM

4802 North Sam Houston Parkway - Suite 500

Houston, TX

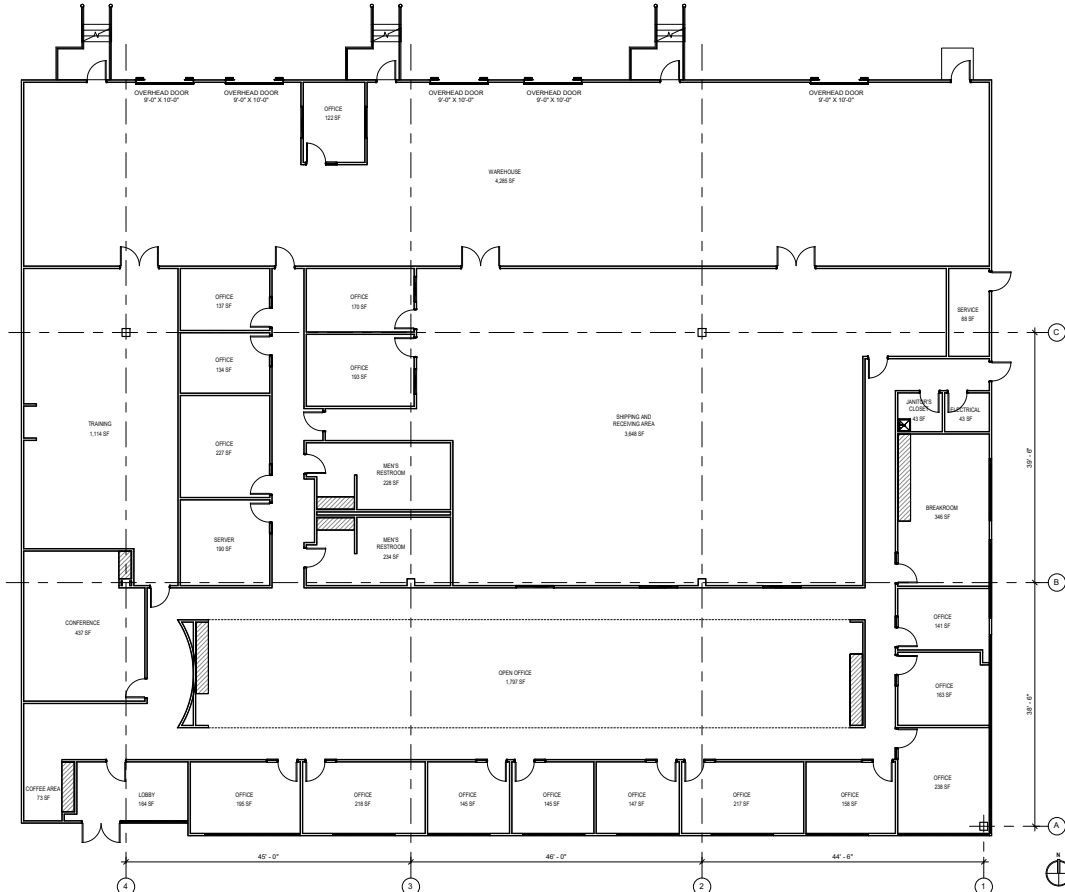
Building Size: 55,200 SF | Building Availability: 18,376 SF

Building Specifications

- Industrial space available
- 55,200 SF total building size
- 18,376 SF available size

Additional Information

- 13,758 SF of office space with high ceilings that consist of:
 - 13 private offices
 - 1 shipping and receiving office
 - 2 conference rooms
 - training room
 - open office area
 - Large breakroom
- 4,609 SF of air conditioned warehouse area with the following loading:
 - 2 dock wells
 - 2 semi docks
 - 1 ramp



4802 North Sam Houston Parkway - Suite 500

Houston, TX

Building Size: 55,200 SF | Building Availability: 18,376 SF

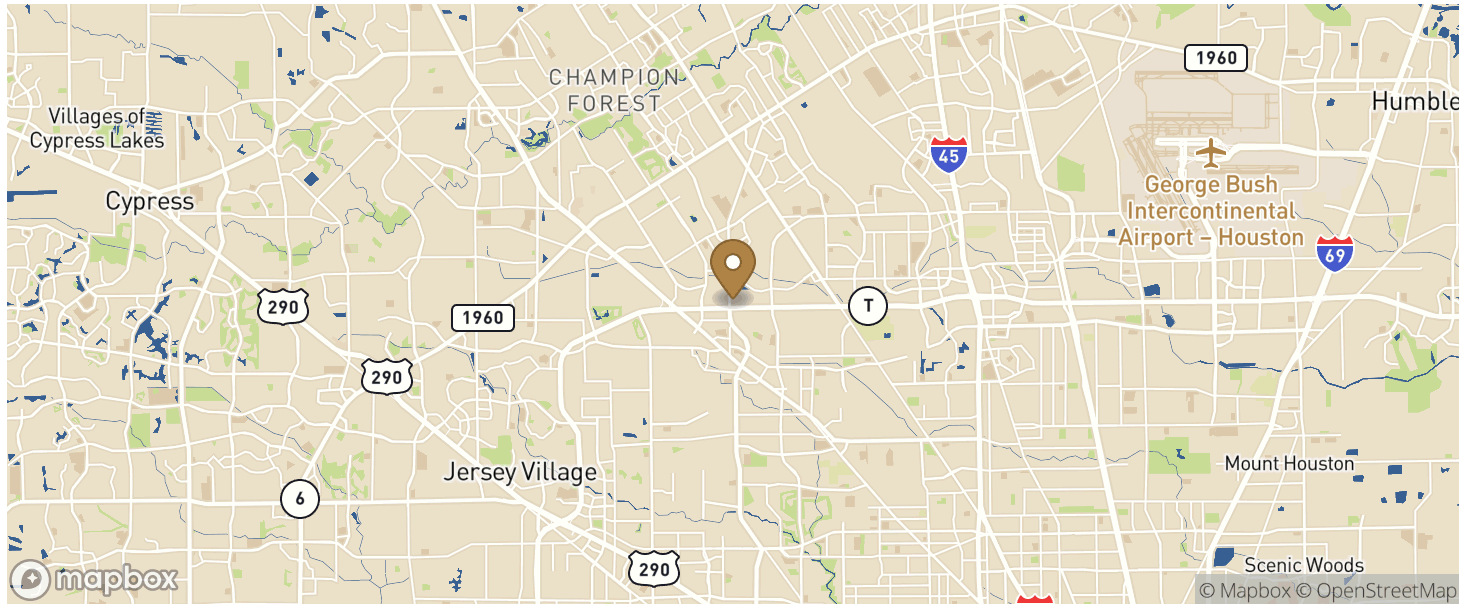


4802 North Sam Houston Parkway - Suite 500

Houston, TX

Building Size: 55,200 SF | Building Availability: 18,376 SF

Location



Population

WITHIN 10 MILES

Total Population	1,125,867
Total Labor Force	649,422
Unemployment Rate	3.72%
Median Household Income	64,168
Warehouse Employees	4,755
High School Education Or Higher	63.01%