

## 721 SW 19th Street Moore, OK 9,414 sf (Divisible to 1,400 SF Minimum)



- 9,414 Square Foot Building
- Available Spring 2027
- Starting Rates at \$41.00 per sf (inline)
- Tenant Improvements Available
- Drive-Through and End Cap Suites
- Winco Grocery, Gold's Gym, At-Home, Anchors
- Excellent access & visibility
- 19<sup>th</sup> Street Signalized Light Signage

The intersection is anchored by At-Home and WinCo Grocery in the retail heart for the City of Moore. 721 SW 19<sup>th</sup> is shadow anchored by Super Target sharing the Max Morgan signalized light. Royal Rock Development is situated West of the Super Wal- Mart and directly North of Home Depot, and Dick's Sporting Good. Other national retailers in the area include Warren Theater, Bed Bath & Beyond, Hobby Lobby, Kohl's, Lowe's, Shoe Carnival, Best Buy, Marshall's, Harley Davidson, Furr's Cafeteria, Chili's, Starbucks, Dollar Tree, Aldi's, Taco Bueno, Subway, McDonald's, Carl's Jr., BancFirst, Sprint, AT&T,, Chicken Express, Schlotzky's, Five Guys Burgers and 24-Hour Fitness.

RANDY S. VAILLANCOURT, Managing Broker  
5030 N May Ave, #435  
405.210.6772 (mobile) • [randy@avenuecre.com](mailto:randy@avenuecre.com)  
[www.avenuecre.com](http://www.avenuecre.com)

**AVENUE**  
COMMERCIAL REAL ESTATE

# RETAIL

For Lease

**AVENUE**  
COMMERCIAL REAL ESTATE

Collection Street	Cross Street	Traffic Vol	Last Meas...	Distance
SW 19th St	Fritts Blvd E	24,642	2022	0.10 mi
Southwest 19th Street	-	24,291	2022	0.19 mi
S Telephone Rd	SW 17th St N	9,639	2022	0.29 mi
SW 19th St	Riverwalk Dr E	27,267	2022	0.33 mi
SW 19th St	Riverwalk Dr W	22,117	2022	0.39 mi
Southwest 19th Street	Riverwalk Dr W	25,100	2019	0.40 mi
S Telephone Rd	SW 25th St S	5,508	2022	0.46 mi
SW 19th St	Eagle Dr E	11,375	2022	0.50 mi
S Telephone Rd	S Telephone Rd SE	1,194	2022	0.51 mi
S Telephone Rd	SW 11th St S	13,484	2022	0.52 mi

Made with TrafficMetrix® Products

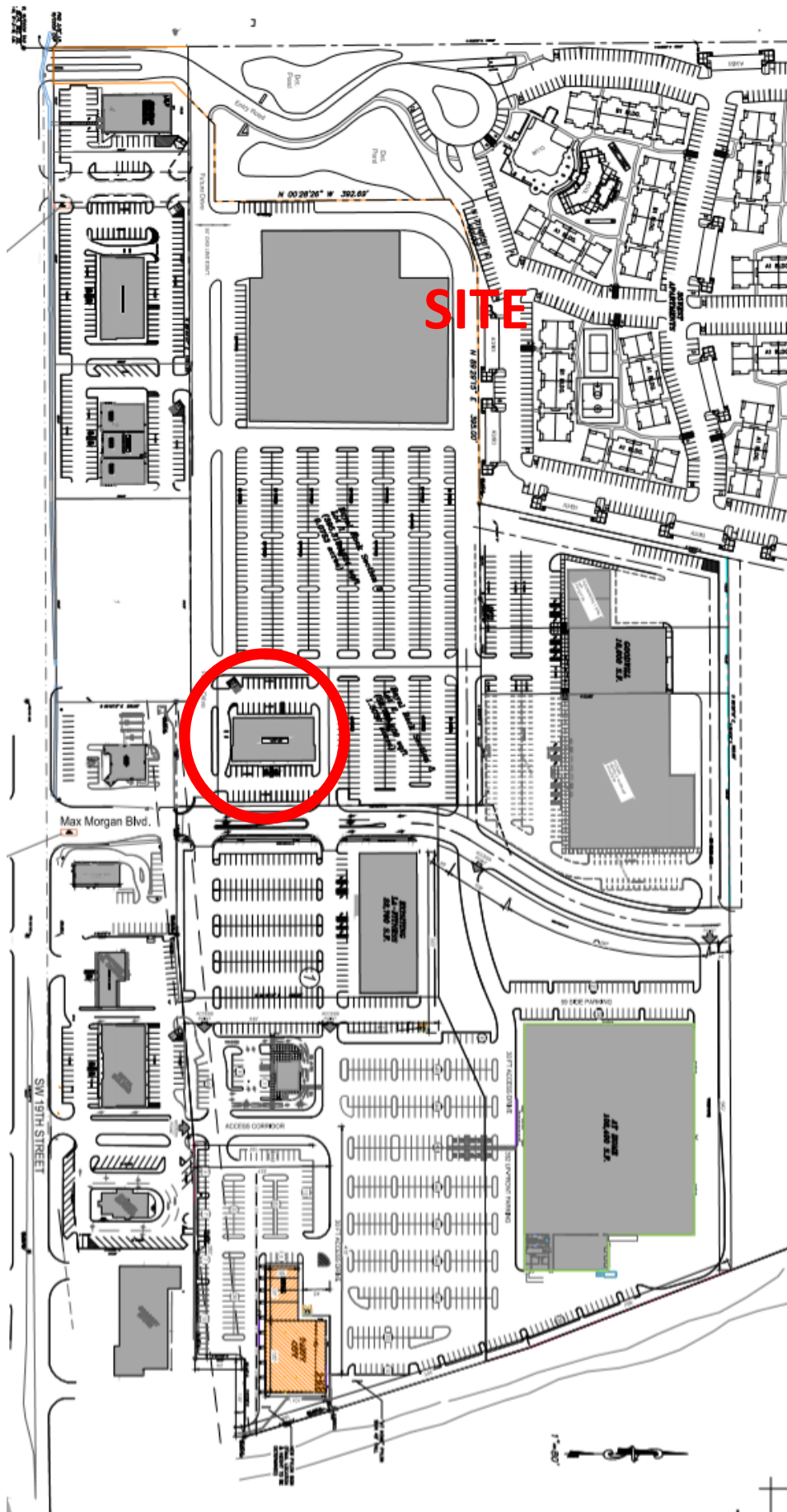


# RETAIL

For Lease

**AVENUE**  
COMMERCIAL REAL ESTATE

Although the information contained herein is believed to be correct, Avenue Commercial Real Estate and its employees disclaim any and all liability for representations and warranties, expressed or implied, contained herein and is submitted subject to errors and omissions.



Although the information contained herein is believed to be correct, Avenue Commercial Real Estate and its employees disclaim any and all liability for representations and warranties, expressed or implied, contained herein and is submitted subject to errors and omissions.