

FOR LEASE

BURBANK ENTERTAINMENT VILLAGE

109 PALM AVE, BURBANK, CA 91502

RETAIL



PROPERTY INFO

- + ±9,421 Square Feet of restaurant space located immediately next to the box office and Buffalo Wild Wings.
- + Burbank Entertainment Village's AMC 16 screen theaters is one of the country's top 3 grossing theaters.
- + Directly adjacent to The Burbank Collection with 120 residential units and ±40,000 sf of restaurants and shops.
- + Co-tenants and surrounding retailers include: AMC 16-screen theaters, Buffalo Wild Wings, Yardhouse, Barney's Beanery, P.F. Changs, Urban Outfitters, Chipotle, Coldstone Creamery, Tender Greens, Pizza Rev, Five Guys Burgers, Islands and Woodranch.

CBRE

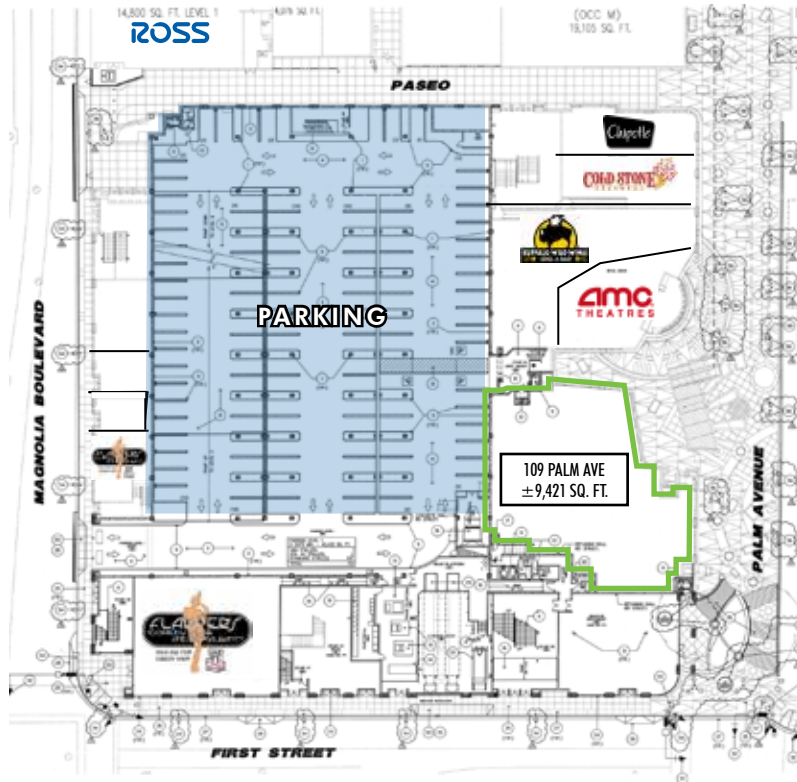
FOR LEASE

BURBANK ENTERTAINMENT VILLAGE

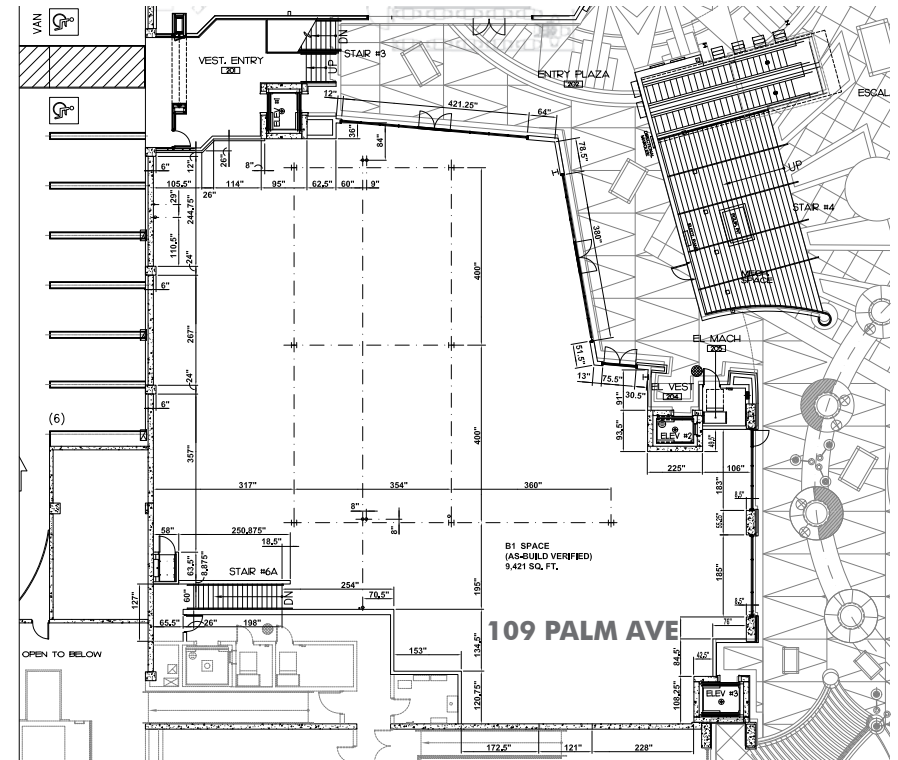
109 PALM AVE, BURBANK, CA 91502

RETAIL

CENTER PLAN



SPACE PLAN



CONTACT US

Geoff Martin

+1 818 502 6739
geoff.martin@cbre.com
Lic. 01180819

Ryan Burnett

+1 818 502 6791
ryan.burnett@cbre.com
Lic. 01481691

Brian Yoshimura

+1 818 502 6736
brian.yoshimura@cbre.com
Lic. 01967227

© 2017 CBRE, Inc. This information has been obtained from sources believed reliable. We have not verified it and make no guarantee, warranty or representation about it. Any projections, opinions, assumptions or estimates used are for example only and do not represent the current or future performance of the property. You and your advisors should conduct a careful, independent investigation of the property to determine to your satisfaction the suitability of the property for your needs. Photos herein are the property of their respective owners and use of these images without the express written consent of the owner is prohibited. CBRE and the CBRE logo are service marks of CBRE, Inc. and/or its affiliated or related companies in the United States and other countries. All other marks displayed on this document are the property of their respective owners.

CBRE

FOR LEASE

BURBANK ENTERTAINMENT VILLAGE

109 PALM AVE, BURBANK, CA 91502

RETAIL

SURROUNDING RETAIL



CONTACT US

Geoff Martin

+1 818 502 6739
geoff.martin@cbre.com
Lic. 01180819

Ryan Burnett

+1 818 502 6791
ryan.burnett@cbre.com
Lic. 01481691

Brian Yoshimura

+1 818 502 6736
brian.yoshimura@cbre.com
Lic. 01967227

© 2017 CBRE, Inc. This information has been obtained from sources believed reliable. We have not verified it and make no guarantee, warranty or representation about it. Any projections, opinions, assumptions or estimates used are for example only and do not represent the current or future performance of the property. You and your advisors should conduct a careful, independent investigation of the property to determine to your satisfaction the suitability of the property for your needs. Photos herein are the property of their respective owners and use of these images without the express written consent of the owner is prohibited. CBRE and the CBRE logo are service marks of CBRE, Inc. and/or its affiliated or related companies in the United States and other countries. All other marks displayed on this document are the property of their respective owners.

CBRE

FOR LEASE

BURBANK ENTERTAINMENT VILLAGE

109 PALM AVE, BURBANK, CA 91502

RETAIL



© 2017 CBRE, Inc. This information has been obtained from sources believed reliable. We have not verified it and make no guarantee, warranty or representation about it. Any projections, opinions, assumptions or estimates used are for example only and do not represent the current or future performance of the property. You and your advisors should conduct a careful, independent investigation of the property to determine to your satisfaction the suitability of the property for your needs. Photos herein are the property of their respective owners and use of these images without the express written consent of the owner is prohibited. CBRE and the CBRE logo are service marks of CBRE, Inc. and/or its affiliated or related companies in the United States and other countries. All other marks displayed on this document are the property of their respective owners.

CBRE