

Auto Body

CRE plus Business

615 Frelinghuysen
Ave.
Newark, NJ 07114

CALL FOR PRICING!



Auto Body Shop - 5 drive-ins / 2 spray booths



CRE BROKERS
AGENCY

Commercial Real Estate

LORIE MONTENIGRO

COMMERCIAL REAL ESTATE BROKER / PRINCIPAL

C- (201) 747-5255 O- (973) 582-3333
loriemonte@gmail.com

www.crebrowsersagency.com
267 Fairfield Ave, Suite B, W. Caldwell, NJ 07006

CONTACT INFO





Property Features

- 2 Spray booths:
oversized for trucks and buses
- Mixing room
- Drive-ins and parking on both streets
- Fenced corner lot with drive-ins
- Not a flood zone (no flood)

Building Size:
10,158 SF Auto Body Shop

Lot Size: 7261 SF

Parking: Fenced lot/street parking

Ceiling Height: +/- 13'

Ext doors: 5 Drive-ins

Zoning: C-2 (Existing auto body)

Taxes: \$34,587



10,158 SF building plus 7261 SF fenced lot



Lorie Montenigro

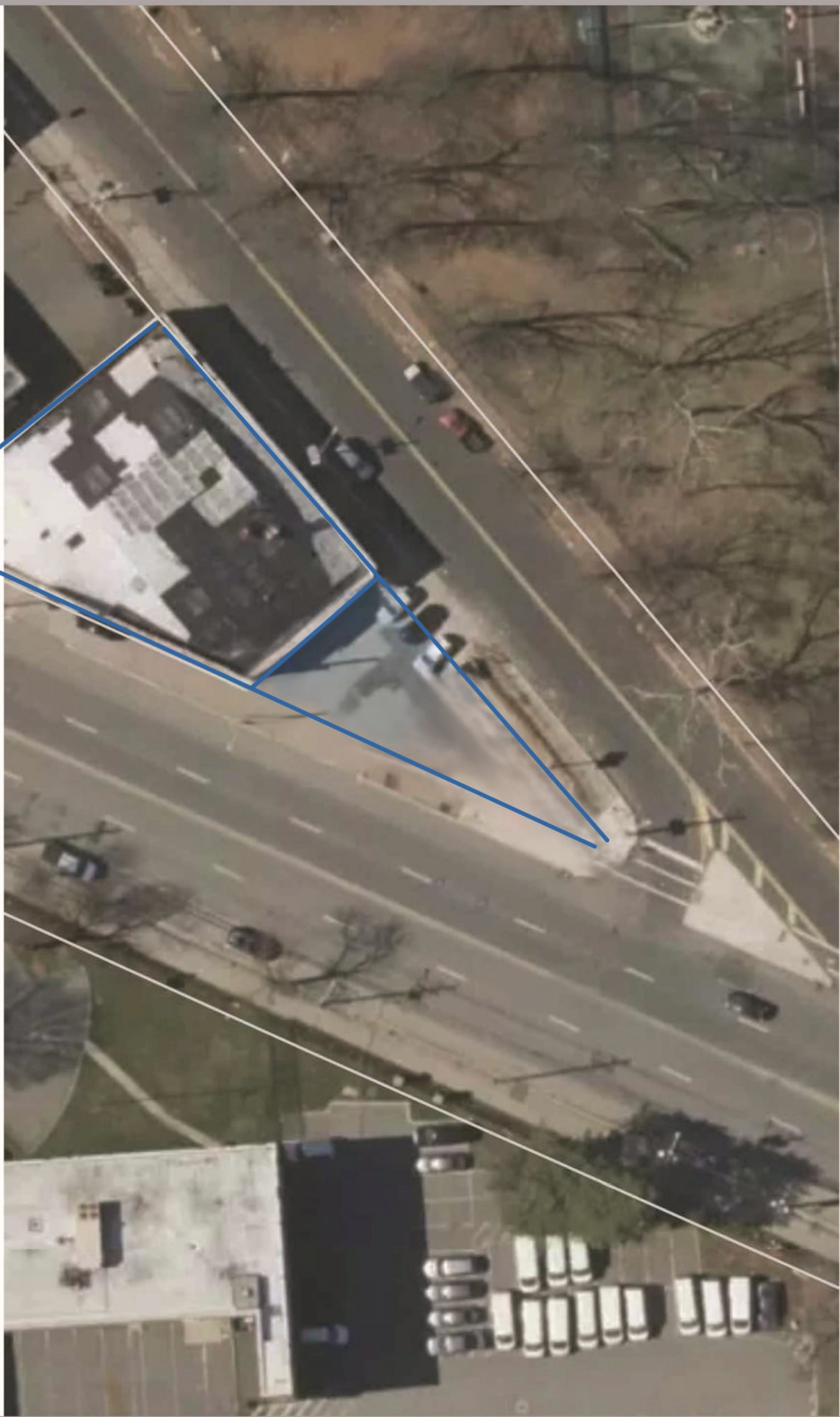
CRE BROKERS
AGENCY
Commercial Real Estate

201.747.5255

Auto Body
CRE plus Business

615 Frelinghuysen Ave.
Newark, NJ 07114

Building and Parking Lot Aerial View



**CALL FOR
PRICING!**

Lorie Montenigro

CRE BROKERS
AGENCY

201.747.5255