

FOR SALE
OR LEASE

CBRE

6201
EAST 43RD STREET
TULSA, OK 74135



CLIMATE CONTROLLED
MANUFACTURING & ASSEMBLY



6201
EAST 43RD STREET
TULSA, OK 74135

PROPERTY HIGHLIGHTS

BUILDING
108,230± SF

SITE
6.19± AC

PARKING
226+ SPACES

ACCESS
I-44 & HWY 51

BUILDING SPECIFICATIONS

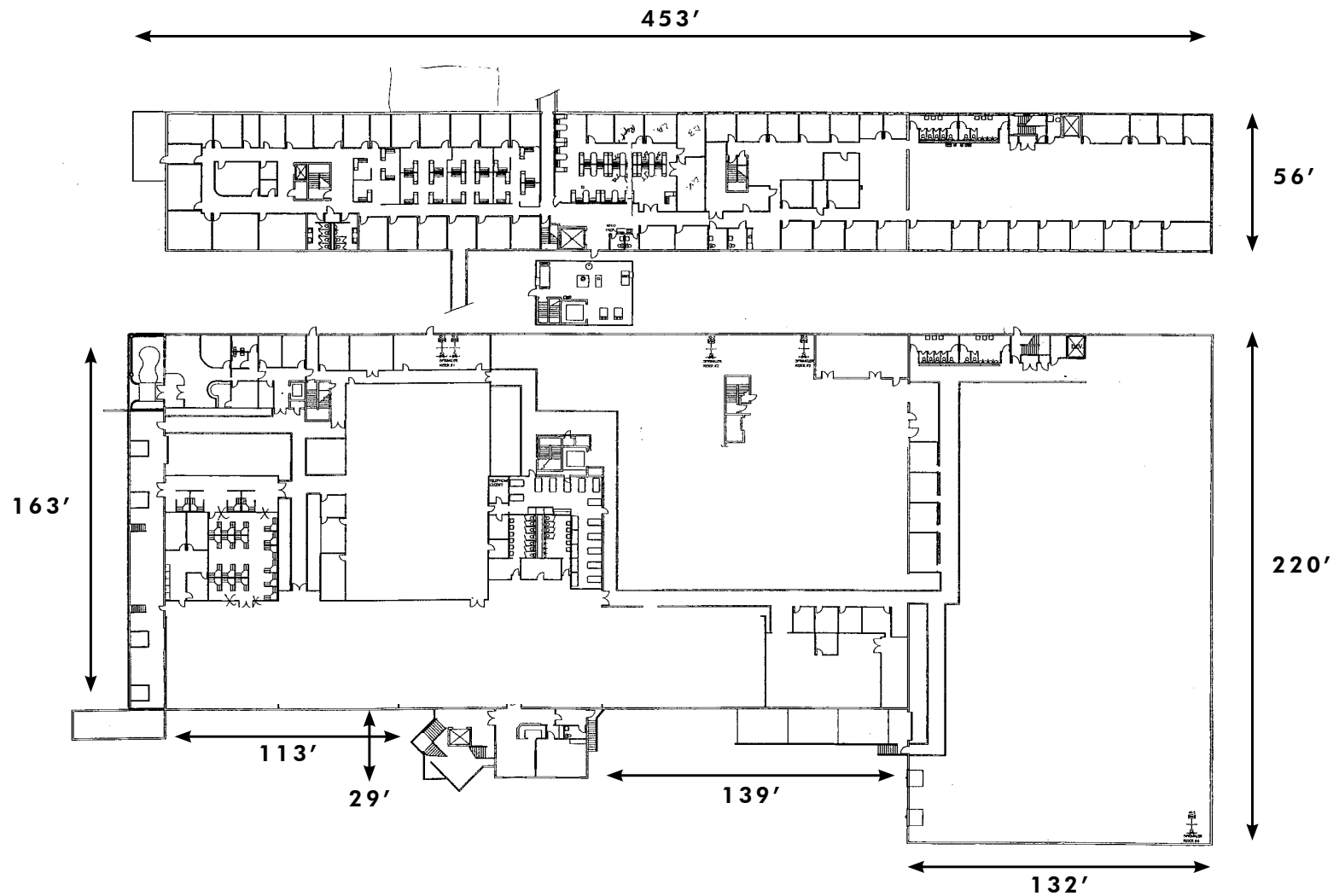
Spec	Details
Total Building Size	108,230± SF*
Office Size	28,790± SF*
Site Size	6.19± Acres*
Construction Years	1965 - Main Plant; 1980 - 2nd Level Office; 1998 - 29,040± Plant Addition with Docks
Ceiling Height	Varies from 10' in Tech Areas to 13' in Plant
Electric	3 Phase, 480 Volts, 2700 Amps
Doors/Dock	(1) 9' x 10' Ramp Door (2) 9' x 10' Truck Docks with Levelers (1) 12' x 12' Drive-In Door Exterior Dock on West Side with 10' x 10' & 12' x 10' Doors
Parking	226± Spaces
Quick Access	I-44 & Broken Arrow Expressway/Highway 51



PHOTOS



FLOOR PLAN



Drawing not to scale

Drawing not to scale

USA MAP

6201 EAST 43RD STREET, TULSA, OK

**CENTRALLY
LOCATED**



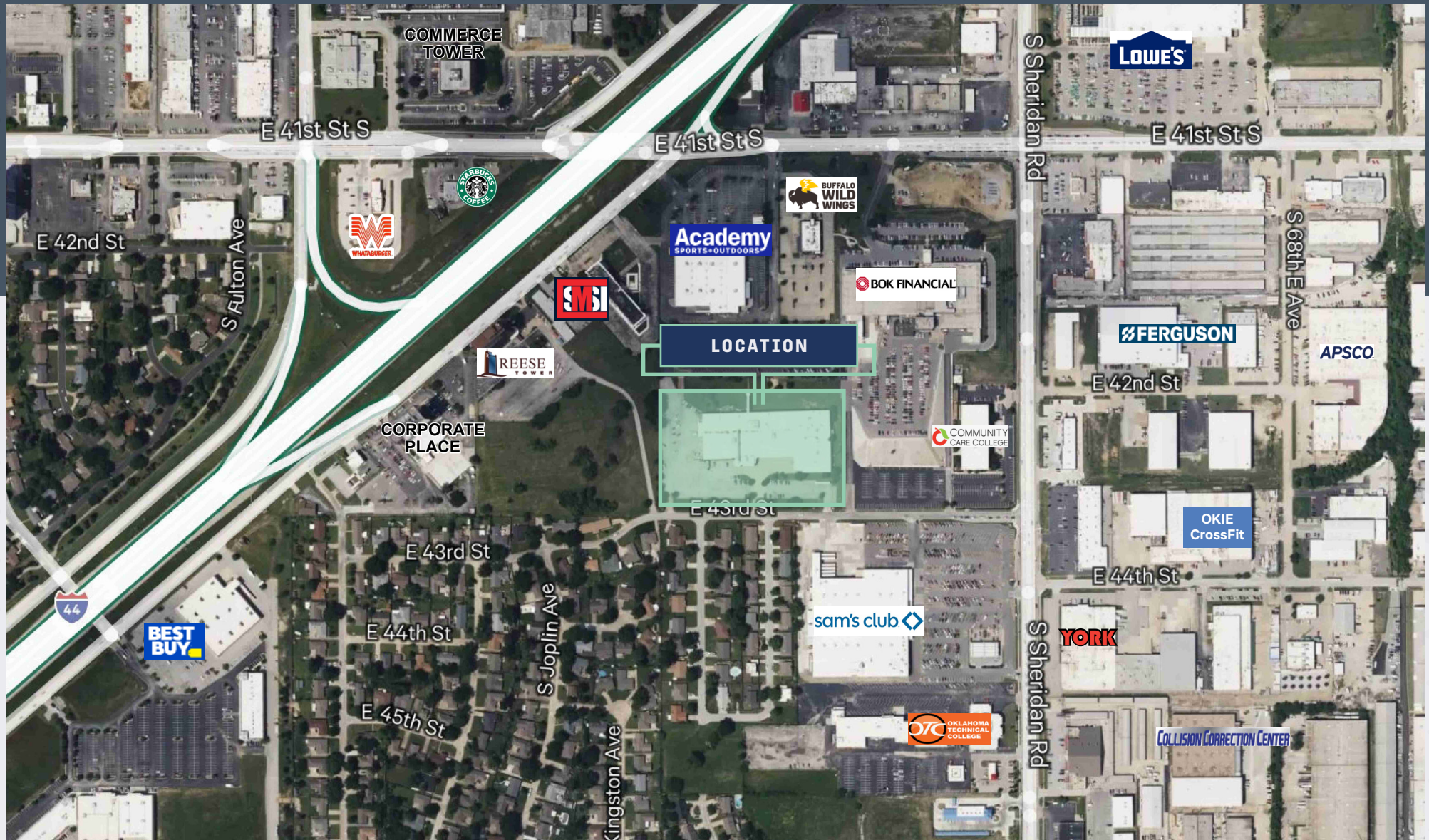
**Convenient
Access**

**Midwest
Corridor**

**East-West Coast
Interchange**

AERIAL MAP

6201 EAST 43RD STREET, TULSA, OK



6201
EAST 43RD STREET
TULSA, OK 74135

CLIMATE CONTROLLED MANUFACTURING & ASSEMBLY

FOR SALE OR LEASE

JAMIE HILL, SDR, CCIM

First Vice President

+1 918 392 7206
jamie.hill@cbre.com

SPENCER SHEETS

Senior Associate

+1 918 392 7240
spencer.sheets@cbre.com

CBRE

© 2025 CBRE, Inc. All rights reserved. This information has been obtained from sources believed reliable but has not been verified for accuracy or completeness. CBRE, Inc. makes no guarantee, representation or warranty and accepts no responsibility or liability as to the accuracy, completeness, or reliability of the information contained herein. You should conduct a careful, independent investigation of the property and verify all information. Any reliance on this information is solely at your own risk. CBRE and the CBRE logo are service marks of CBRE, Inc. All other marks displayed on this document are the property of their respective owners, and the use of such marks does not imply any affiliation with or endorsement of CBRE. Photos herein are the property of their respective owners. Use of these images without the express written consent of the owner is prohibited.