

OFFICE SPACE FOR LEASE

2510 Alpine Road
Eau Claire, WI



- Located in the Gateway West Business Park.
- Attractive, well maintained multi-tenant building.
- Convenient location with easy access to all major highways.
- 6120 sq. ft. office space at \$12.75 per sq. ft. gross.
- Utilities, real estate taxes, insurance and common area maintenance included.
- Space delivered "as is" but was remodeled 3 years ago.
- Includes a combination of private offices, open work space, large IT room, private restrooms, break room and conference room.

A·F·T

Real Estate, Inc.

www.aftrealestate.com

Al Taft:

715.839.1234

Cell: 715.577.3333

altaft@aftrealestate.com

Don Myers:

715.839.1234

Cell: 715.308.7777

don@aftrealestate.com

1324 W Clairemont Ave. Ste 4

Eau Claire, WI 54701-6191

STEVE CREVIERSON
 ARCHITECT
 5712 North Road, Eau Claire, WI 54601
 TEL: 785-838-1000
 ARCHITECT@STEVECREVIERSON.COM

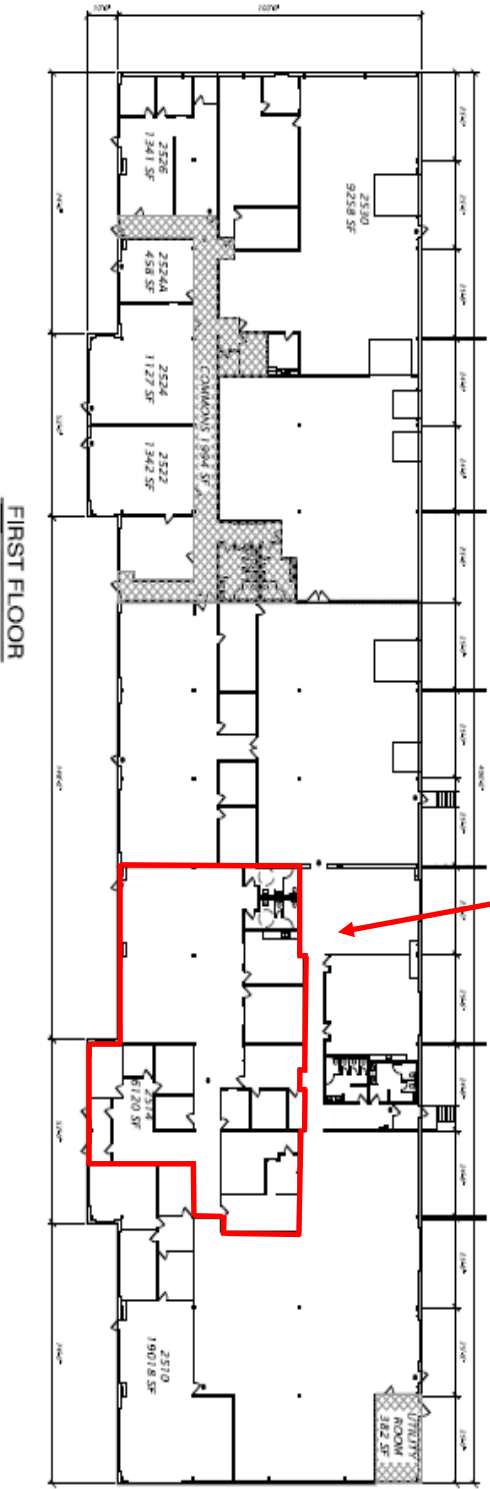
0 16' 32' 64'
 SCALE: 1/32" = 1'-0"

LOKRE BUILDING
 ALPINE ROAD
 EAU CLAIRE, WI

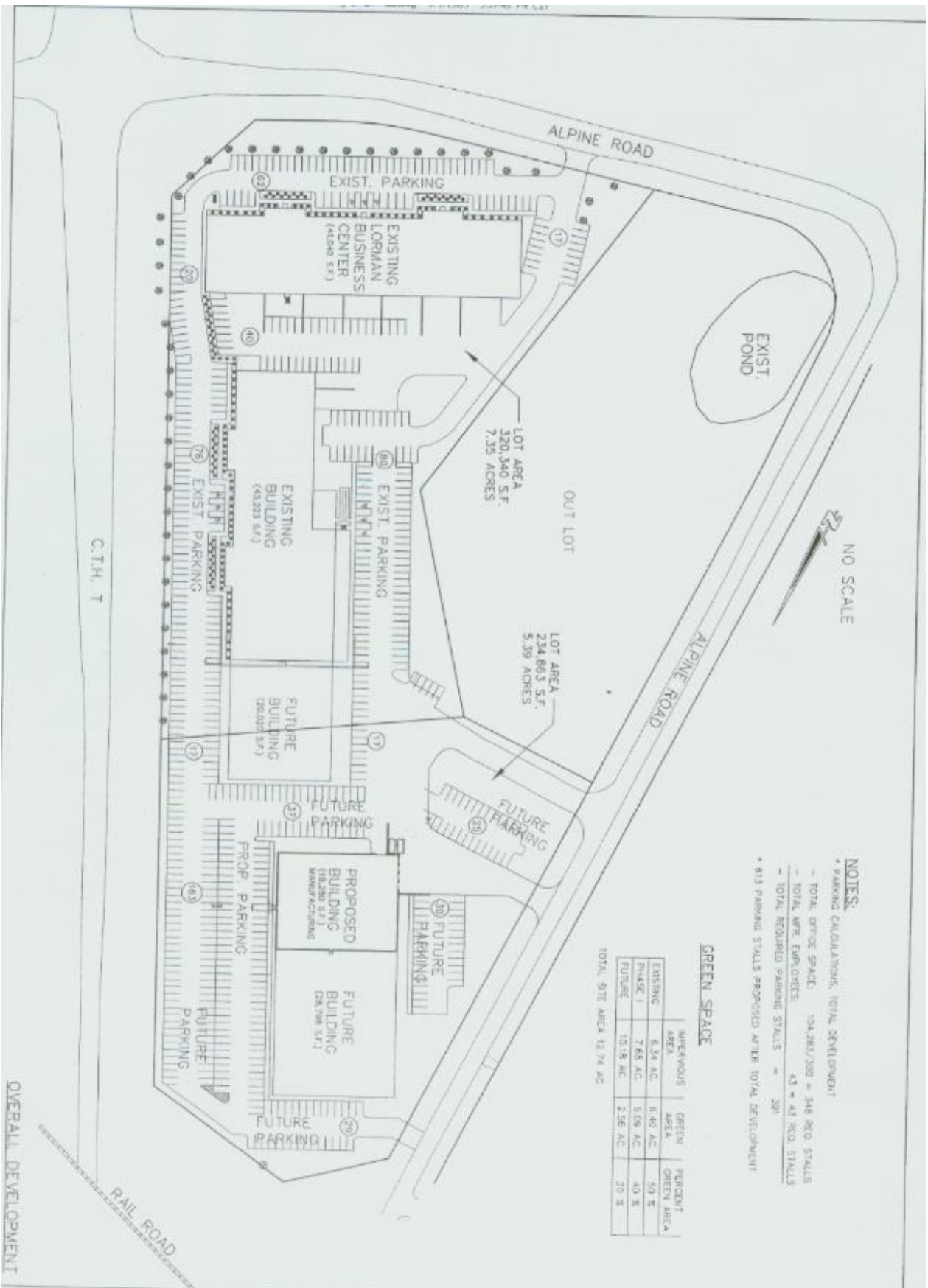
DETAILED PLAN



REVISION	DATE	BY
1	11/17/2018	SCM
2	02/15/20	SCM
3	02/15/20	SCM



**AVAILABLE
 SPACE
 6120 SQ. FT.**



NO SCALE

NOTES:

- * PARKING CALCULATIONS, TOTAL DEVELOPMENT
- TOTAL OFFICE SPACE: 104,285/200 = 348 REQ STALLS
- TOTAL MFR. EMPLOYEES: 43 * 43 REQ STALLS
- TOTAL REQUIRED PARKING STALLS = 391
- * 913 PARKING STALLS PROPOSED AFTER TOTAL DEVELOPMENT

GREEN SPACE

	UNDEVELOPED AREA	GREEN AREA	PERCENT GREEN AREA
EXISTING	8.54 AC	0.40 AC	5% *
PHASE I	7.65 AC	5.09 AC	40 %
FUTURE	10.18 AC	2.56 AC	20 %
TOTAL SITE AREA 12.78 AC			

C1.2

LORMAN BUSINESS CENTER
for: DURAND BUILDERS
ALPINE ROAD
EAU CLAIRE, WISCONSIN

Cedar Corporation

604 West Avenue
Menomonie, Wisconsin 54751

715-735-7777
715-735-7778
715-735-7779
715-735-7780
715-735-7781
715-735-7782
715-735-7783
715-735-7784
715-735-7785
715-735-7786
715-735-7787
715-735-7788
715-735-7789
715-735-7790

DATE	11/20/11
PROJECT	LORMAN BUSINESS CENTER
SCALE	AS SHOWN
DRAWN BY	D. B.
CHECKED BY	D. B.
DATE	11/20/11
PROJECT NO.	11-000
CLIENT	DURAND BUILDERS
LOCATION	ALPINE ROAD, EAU CLAIRE, WI
DESIGNED BY	CECILIA
DATE	11/20/11
PROJECT NO.	11-000
CLIENT	DURAND BUILDERS
LOCATION	ALPINE ROAD, EAU CLAIRE, WI



DISCLOSURE TO NON-RESIDENTIAL CUSTOMERS

1 Prior to negotiating on your behalf the brokerage firm, or an agent associated with the firm, must provide you the
2 following disclosure statement:

3 **DISCLOSURE TO CUSTOMERS** You are a customer of the brokerage firm (hereinafter Firm). The Firm is either an agent
4 of another party in the transaction or a subagent of another firm that is the agent of another party in the transaction. A
5 broker or a salesperson acting on behalf of the Firm may provide brokerage services to you. Whenever the Firm is
6 providing brokerage services to you, the Firm and its brokers and salespersons (hereinafter Agents) owe you, the
7 customer, the following duties:

- 8 (a) The duty to provide brokerage services to you fairly and honestly.
- 9 (b) The duty to exercise reasonable skill and care in providing brokerage services to you.
- 10 (c) The duty to provide you with accurate information about market conditions within a reasonable time if you request
11 it, unless disclosure of the information is prohibited by law.
- 12 (d) The duty to disclose to you in writing certain Material Adverse Facts about a property, unless disclosure of the
13 information is prohibited by law (see lines 42-51).
- 14 (e) The duty to protect your confidentiality. Unless the law requires it, the Firm and its Agents will not disclose your
15 confidential information or the confidential information of other parties (see lines 23-41).
- 16 (f) The duty to safeguard trust funds and other property held by the Firm or its Agents.
- 17 (g) The duty, when negotiating, to present contract proposals in an objective and unbiased manner and disclose the
18 advantages and disadvantages of the proposals.

19 Please review this information carefully. An Agent of the Firm can answer your questions about brokerage services,
20 but if you need legal advice, tax advice, or a professional home inspection, contact an attorney, tax advisor, or home
21 inspector. This disclosure is required by section 452.135 of the Wisconsin statutes and is for information only. It is a
22 plain-language summary of the duties owed to a customer under section 452.133(1) of the Wisconsin statutes.

23 **CONFIDENTIALITY NOTICE TO CUSTOMERS** The Firm and its Agents will keep confidential any information given to the
24 Firm or its Agents in confidence, or any information obtained by the Firm and its Agents that a reasonable person
25 would want to be kept confidential, unless the information must be disclosed by law or you authorize the Firm to
26 disclose particular information. The Firm and its Agents shall continue to keep the information confidential after the
27 Firm is no longer providing brokerage services to you.

- 28 The following information is required to be disclosed by law:
- 29 1. Material Adverse Facts, as defined in Wis. Stat. § 452.01(5g) (see lines 42-51).
- 30 2. Any facts known by the Firm or its Agents that contradict any information included in a written inspection
31 report on the property or real estate that is the subject of the transaction.

32 To ensure that the Firm and its Agents are aware of what specific information you consider confidential, you may
33 list that information below (see lines 35-41) or provide that information to the Firm or its Agents by other means. At a
34 later time, you may also provide the Firm or its Agents with other Information you consider to be confidential.

35 **CONFIDENTIAL INFORMATION:** _____
36 _____
37 _____

38 **NON-CONFIDENTIAL INFORMATION** (the following information may be disclosed by the Firm and its Agents): _____
39 _____
40 _____

41 _____ (Insert information you authorize to be disclosed, such as financial qualification information.)

42 **DEFINITION OF MATERIAL ADVERSE FACTS**
43 A "Material Adverse Fact" is defined in Wis. Stat. § 452.01(5g) as an Adverse Fact that a party indicates is of such
44 significance, or that is generally recognized by a competent licensee as being of such significance to a reasonable
45 party, that it affects or would affect the party's decision to enter into a contract or agreement concerning a transaction
46 or affects or would affect the party's decision about the terms of such a contract or agreement.

47 An "Adverse Fact" is defined in Wis. Stat. § 452.01(1e) as a condition or occurrence that a competent licensee
48 generally recognizes will significantly and adversely affect the value of the property, significantly reduce the structural
49 integrity of improvements to real estate, or present a significant health risk to occupants of the property; or information
50 that indicates that a party to a transaction is not able to or does not intend to meet his or her obligations under a
51 contract or agreement made concerning the transaction.

52 **NOTICE ABOUT SEX OFFENDER REGISTRY** You may obtain information about the sex offender registry and persons
53 registered with the registry by contacting the Wisconsin Department of Corrections on the Internet at
54 <http://www.doc.wi.gov> or by telephone at 608-240-5830.