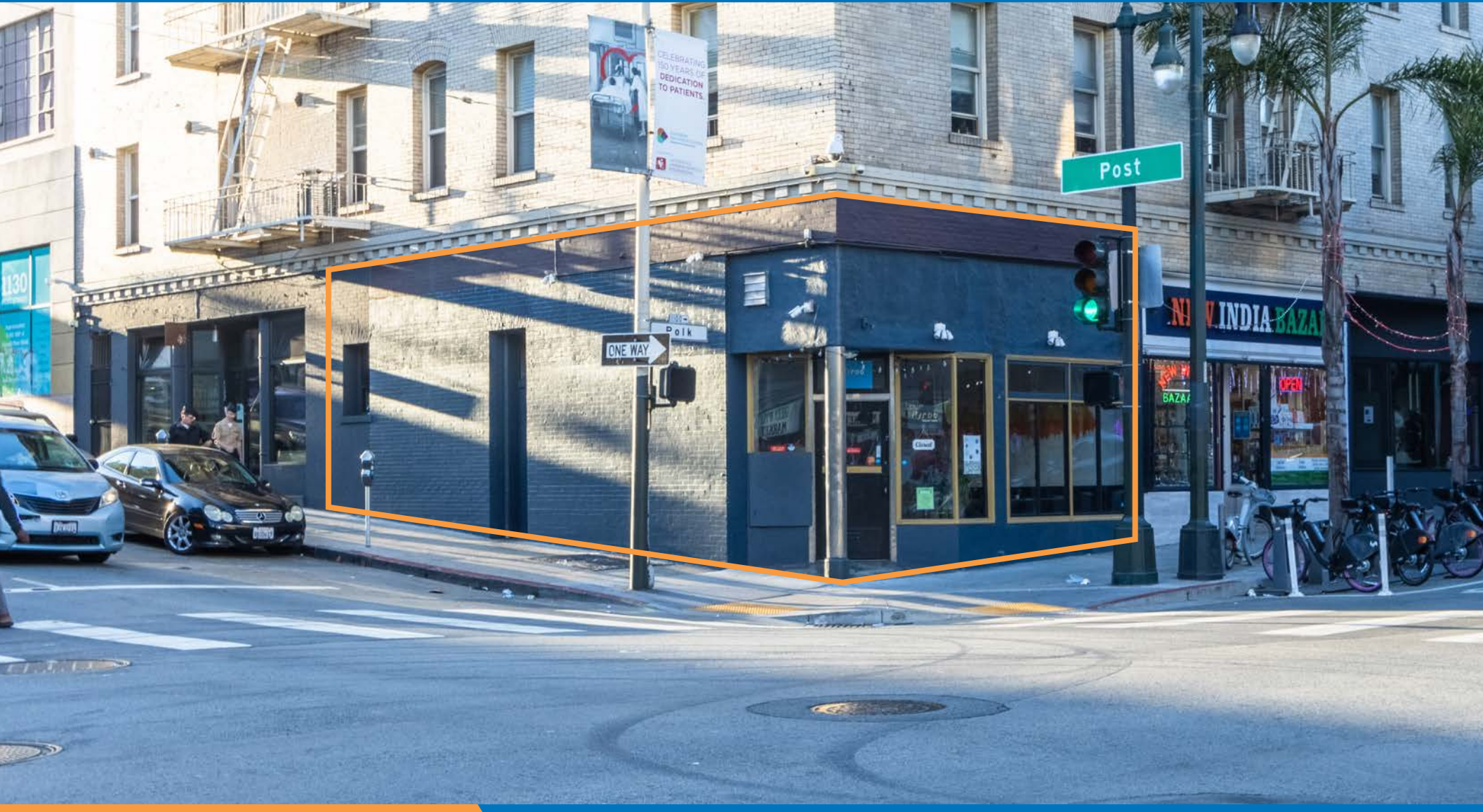


1101 POLK STREET

FOR LEASE | FOOD SERVICE / CAFE INFRASTRUCTURE IN POLK GULCH

TCP
TOUCHSTONE
COMMERCIAL PARTNERS



1101 POLK STREET

PROPERTY SUMMARY

ADDRESS

1101 Polk Street, San Francisco, CA 94109

AVAILABLE SPACE

+/- 800 Square Feet

*Additional Basement / Storage Space

*Small Mezzanine Area

RENTAL RATE

\$5,000 / Month, Industrial Gross

AVAILABLE

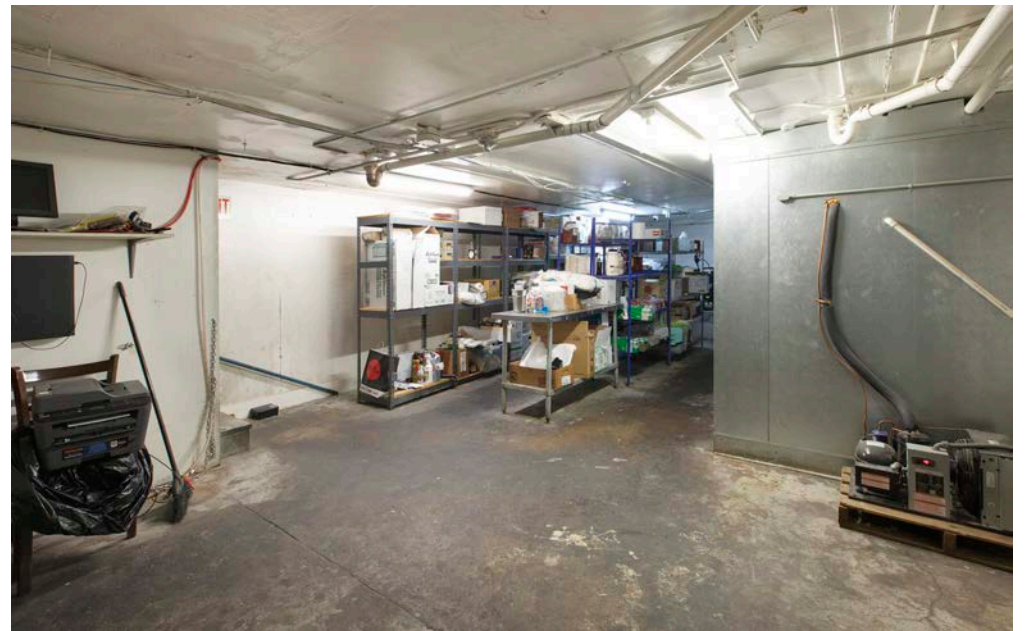
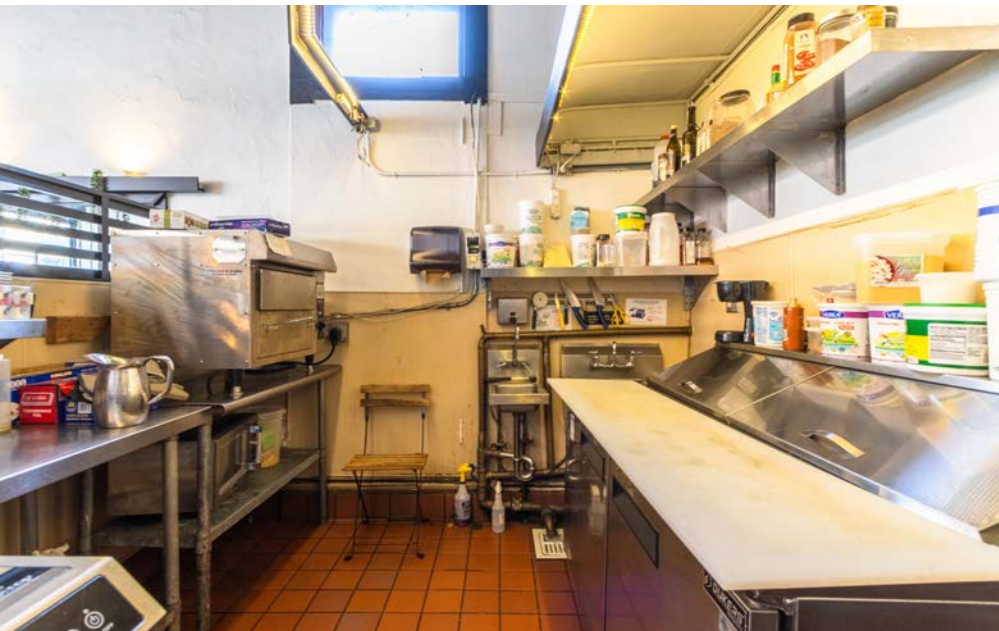
Immediately

BUILDING ATTRIBUTES

- + Hard Corner Location
- + Fully Built Out Limited Food Service / Cafe
- + One Block From Sutter / CPMC Hospital
- + High Ceilings
- + High Day and Night Activity



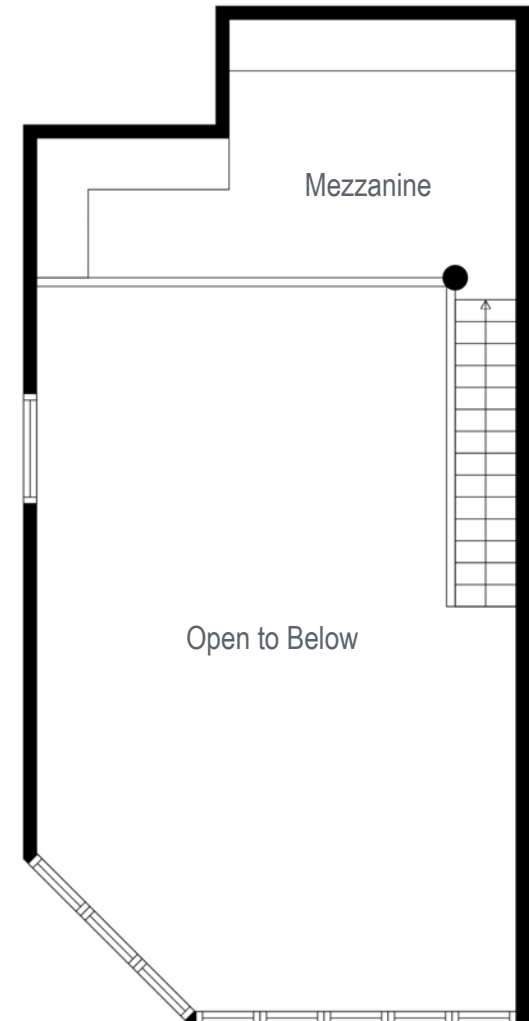
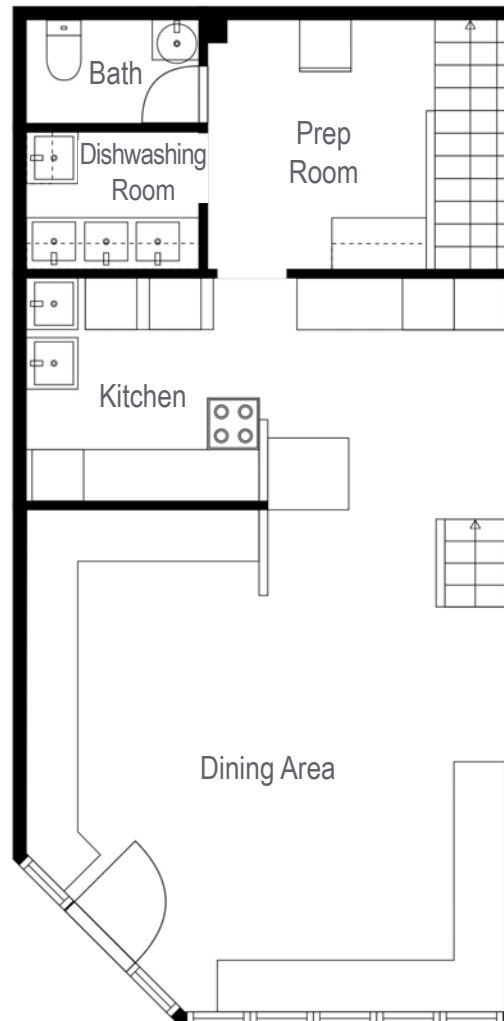
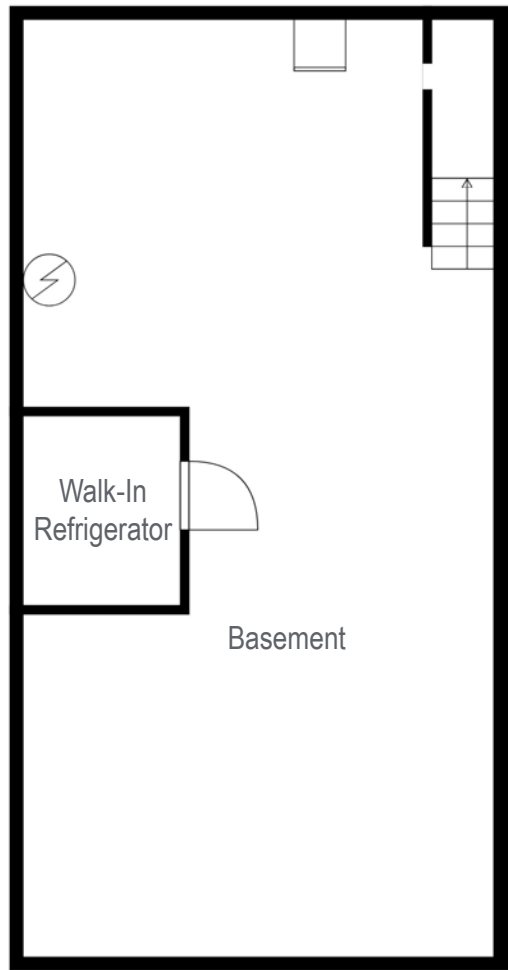
1101 POLK STREET



1101 POLK STREET

FLOOR PLAN

+/- 800 Square Feet



1101 POLK STREET

LOCATION OVERVIEW

Desirable Polk Gulch location in San Francisco, the subject property is well located in a rapidly changing neighborhood.



03 MIN to Van Ness Muni
14 MIN to Jefferson Sq. Park
15 MIN to Civic Center Bart



05 MIN to Union Square
07 MIN to Financial District
12 MIN to Mission District



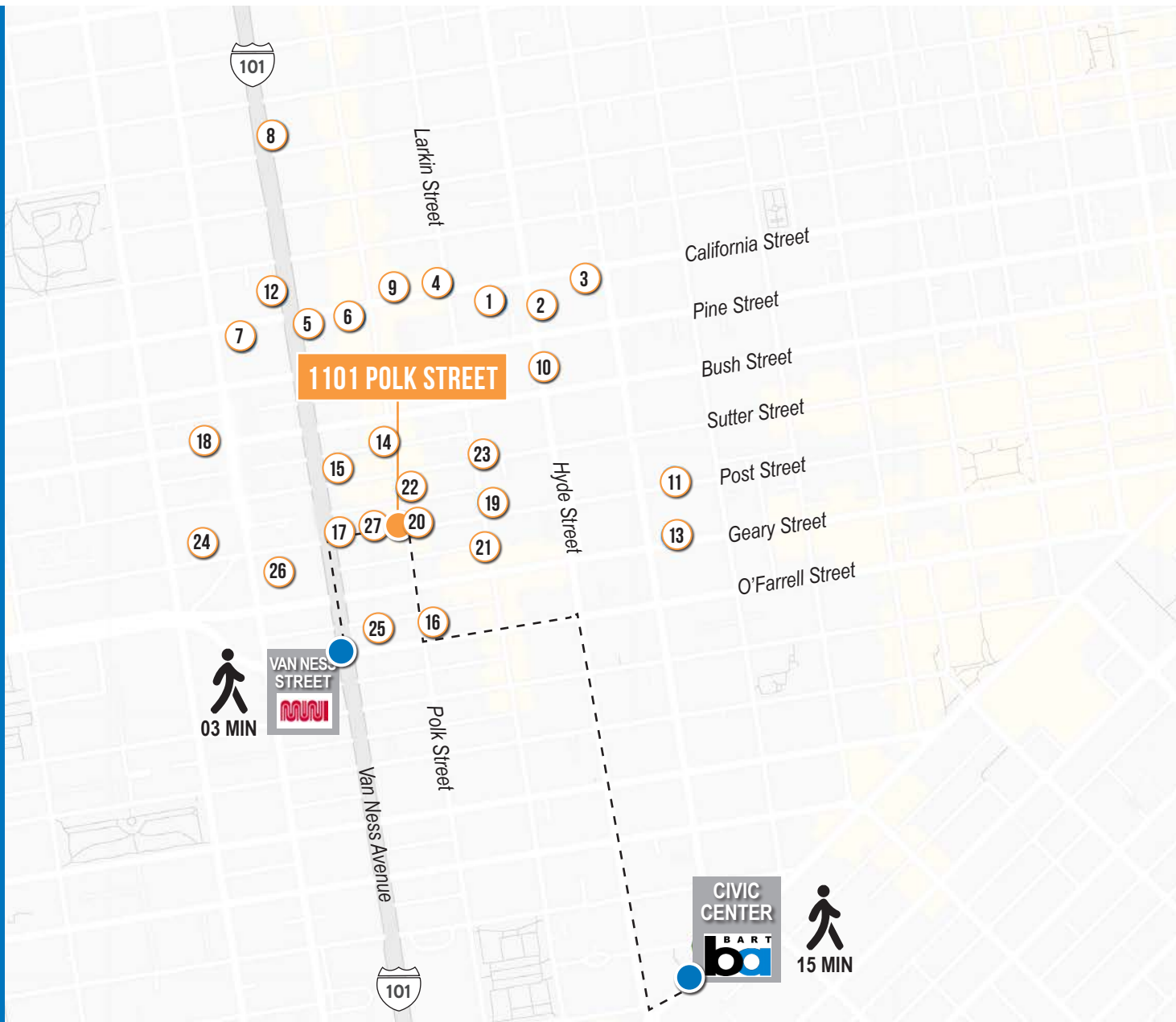
05 MIN to 101 On-Ramp
08 MIN to 80 On-Ramp
11 MIN to 280 On-Ramp



1101 POLK STREET

NEARBY AMENITIES

- 1..... Trader Joe's
- 2..... Nourish Cafe
- 3..... Zeki's Bar
- 4..... Mymy
- 5..... Starbucks
- 6..... Crustacean Restaurant
- 7..... Whole Foods Market
- 8..... House of Prime Rib
- 9..... Cordon Bleu Restaurant
- 10..... Saint Francis Hospital
- 11..... Farm : Table
- 12..... Guitar Center
- 13..... Mensho Tokyo SF
- 14..... Mayes Oyster House
- 15..... The Regency Ballroom
- 16..... Bread & Butter Market & Deli
- 17..... 24 Hour Fitness
- 18..... Akira Japanese Restaurant
- 19..... Members Only
- 20..... Jackalope
- 21..... Jane on Larkin
- 22..... DecoDance Bar
- 23..... halal DASTARKHAN
- 24..... Walgreens
- 25..... City Smoke House
- 26..... CPMC Van Ness
- 27..... Sushi Sato



1101 POLK STREET



SUSHI SATO



CPMC VAN NESS



WHOLE FOODS MARKET



24 HOUR FITNESS



RUTH CHRIS'S STEAK HOUSE

1101 POLK STREET



JARON ELIOPOULOS DRE # 01975155
415.608.6336 | jaron@tcpre.com

CAMERON TU DRE # 02100436
510.919.8193 | cameron@tcpre.com

VISIT ELIOPOULOSGROUP.COM

Corp. Lic. 01112906
www.tcpre.com

The information presented has been secured from sources we believe to be reliable but we make no representations or warranties, expressed or implied, as to the accuracy of the information. Lessee must verify the information and bears all risk for any inaccuracies.