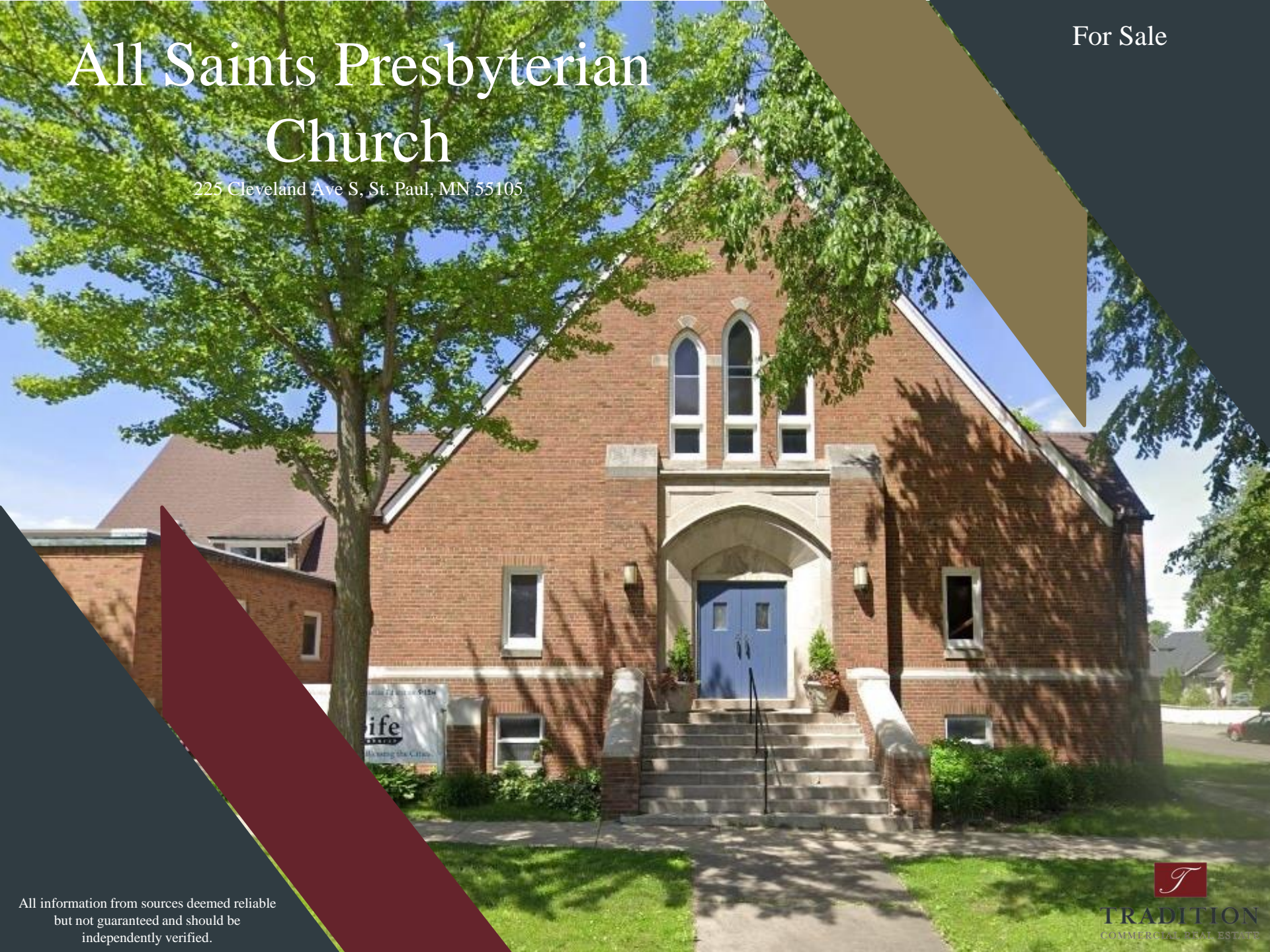


All Saints Presbyterian Church

225 Cleveland Ave S, St. Paul, MN 55105

For Sale



All information from sources deemed reliable
but not guaranteed and should be
independently verified.



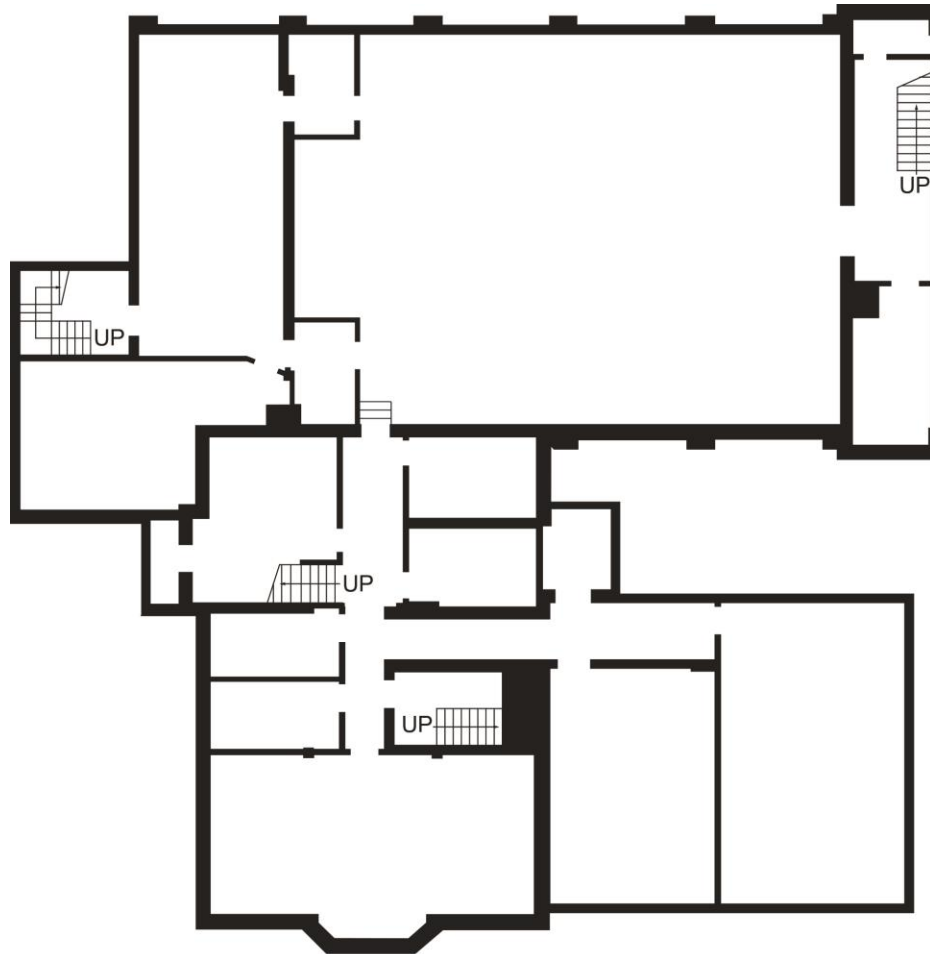
TRADITION
COMMERCIAL REAL ESTATE

Salient Facts

- Building SF: Roughly 19,300 SF
- Land Size: 0.41 AC
- Sale Price: Negotiable
- Built: 1926
- Zoning: H2 Residential & adjacent to B2 Community Business
- Access & visibility along St. Clair Ave, Cleveland Ave S, and Sargent Ave
- Nearby Amenities: Retail, Restaurants, College's and University's, Schools, Parks golf courses, Sporting arenas, etc..
- Parking lot & Street parking
- Building & Monument signage

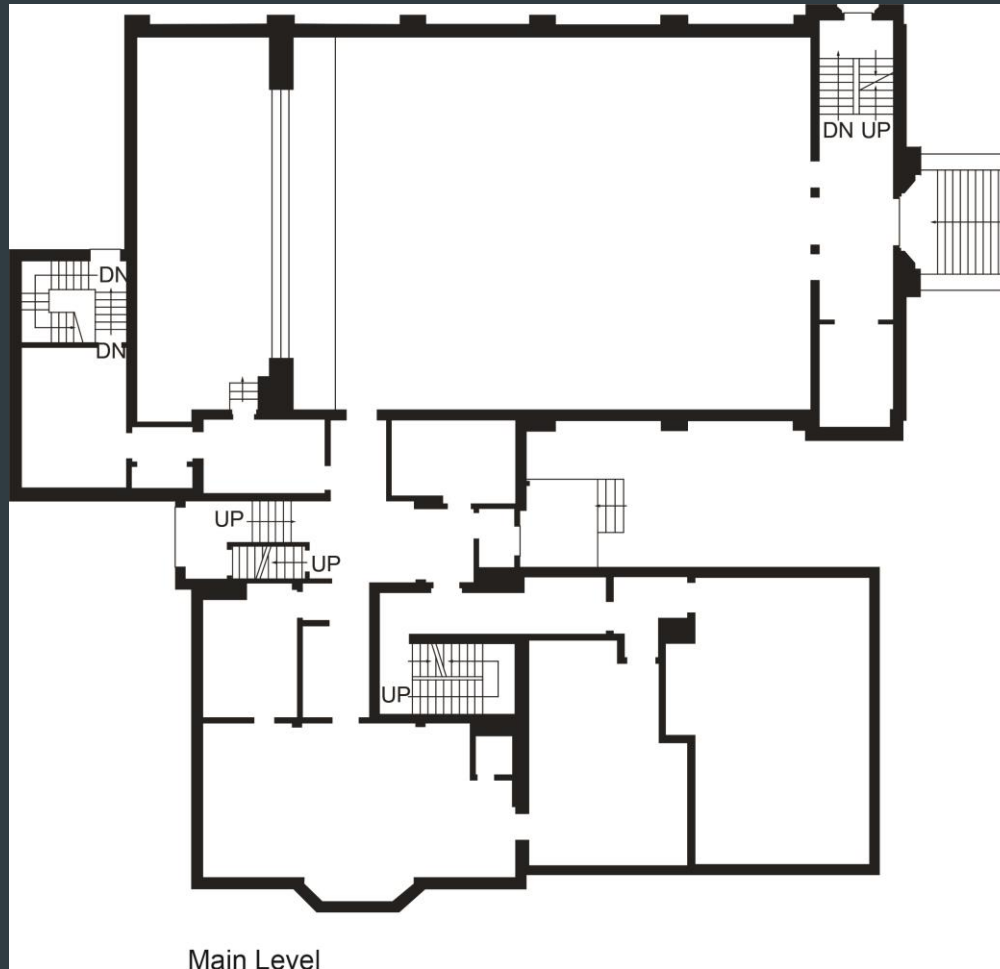
Floor Plan - Basement

Roughly 8,500 SF



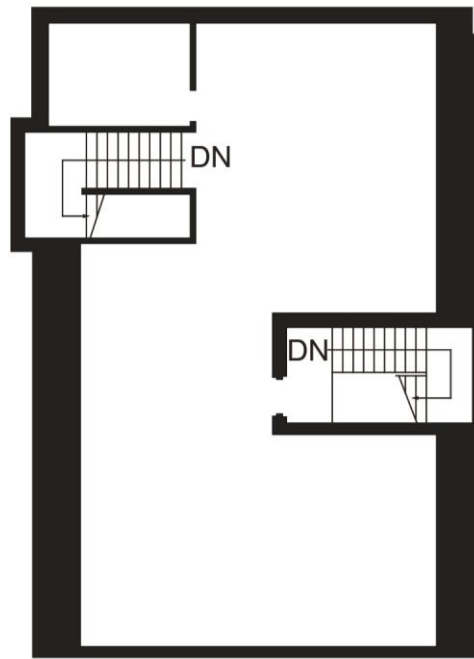
Floor Plan – Main Level

Roughly 8,500 SF



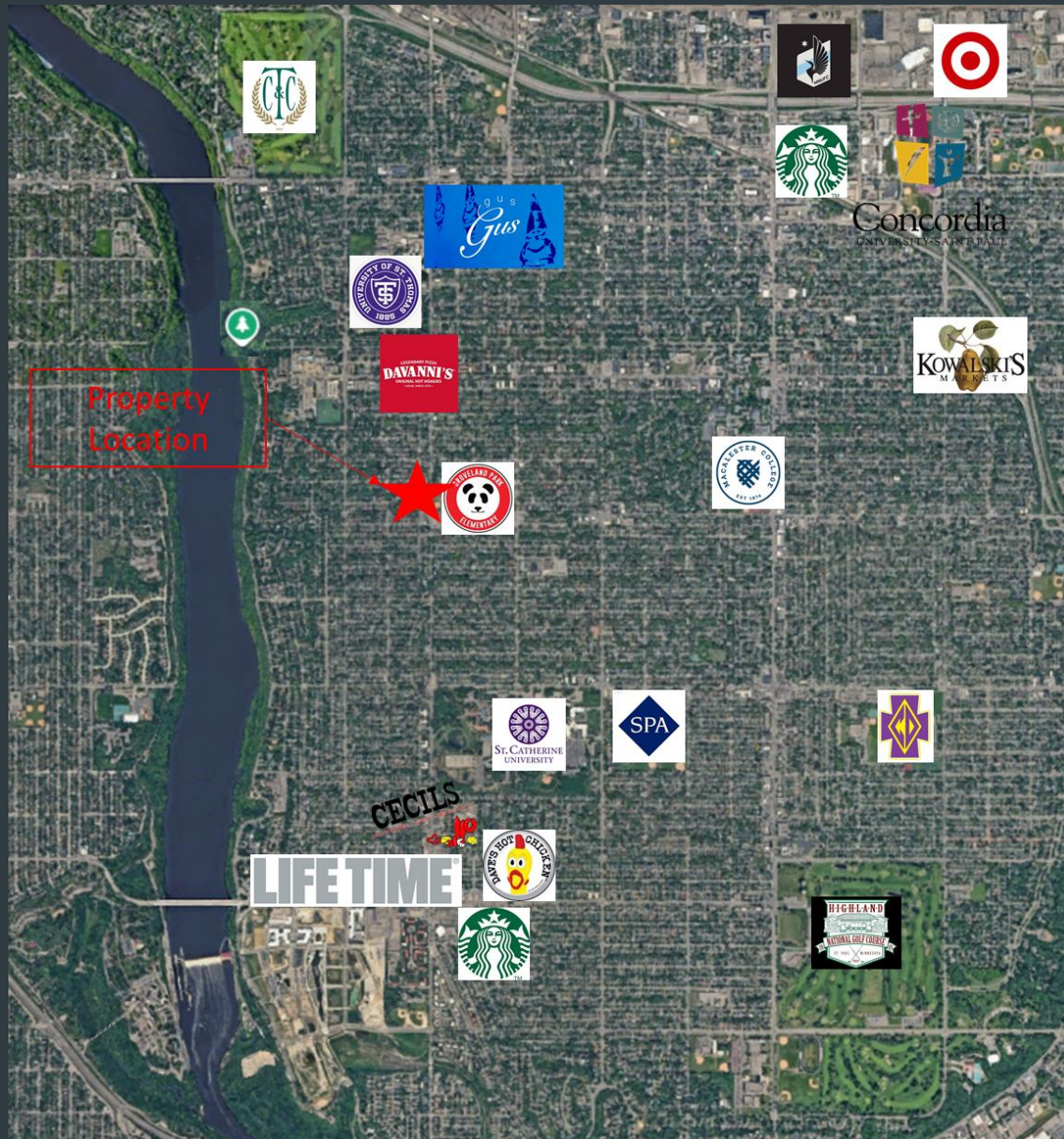
Floor Plan – Second Floor

Roughly 2,300 SF

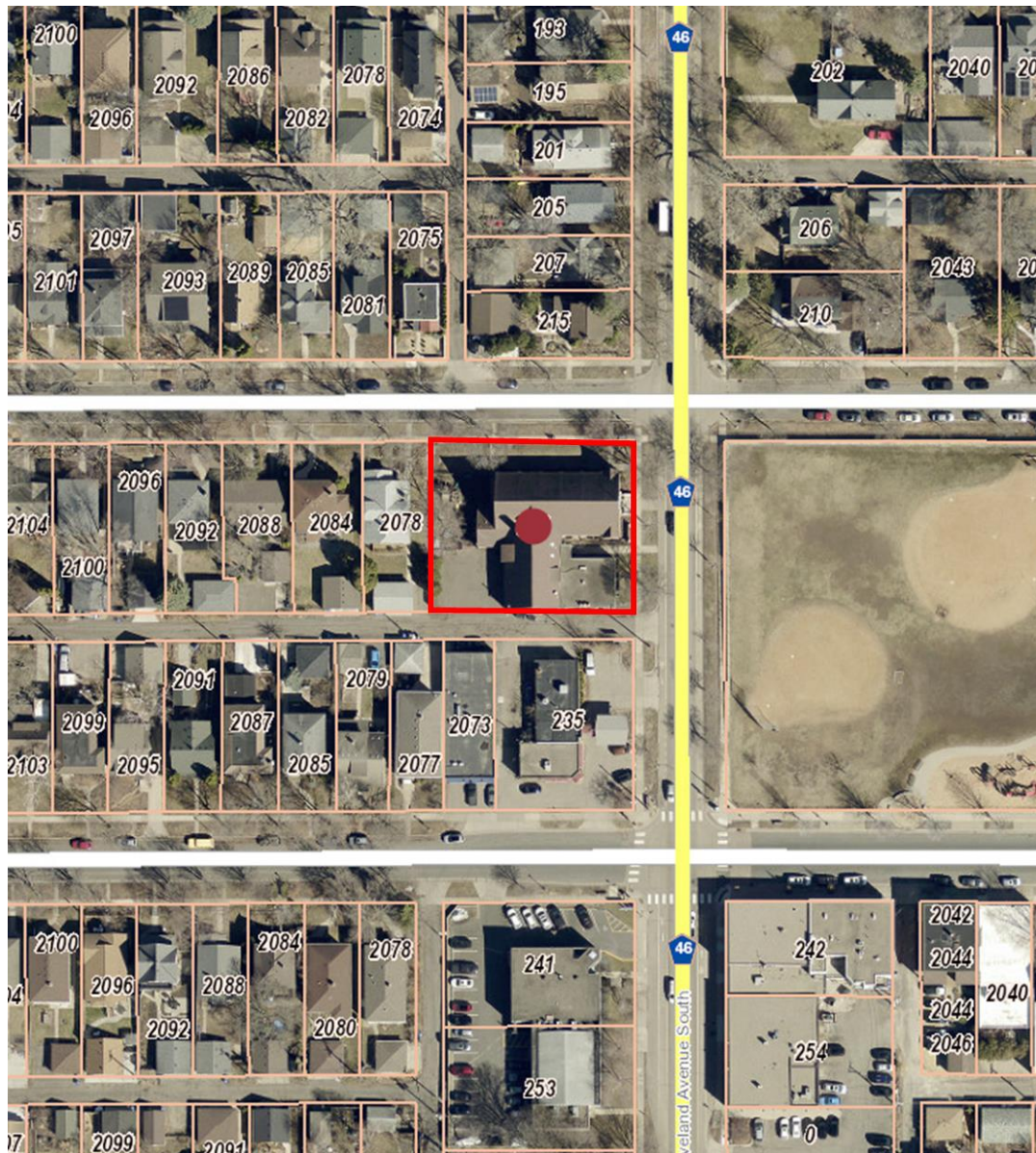


Loft

Aerial



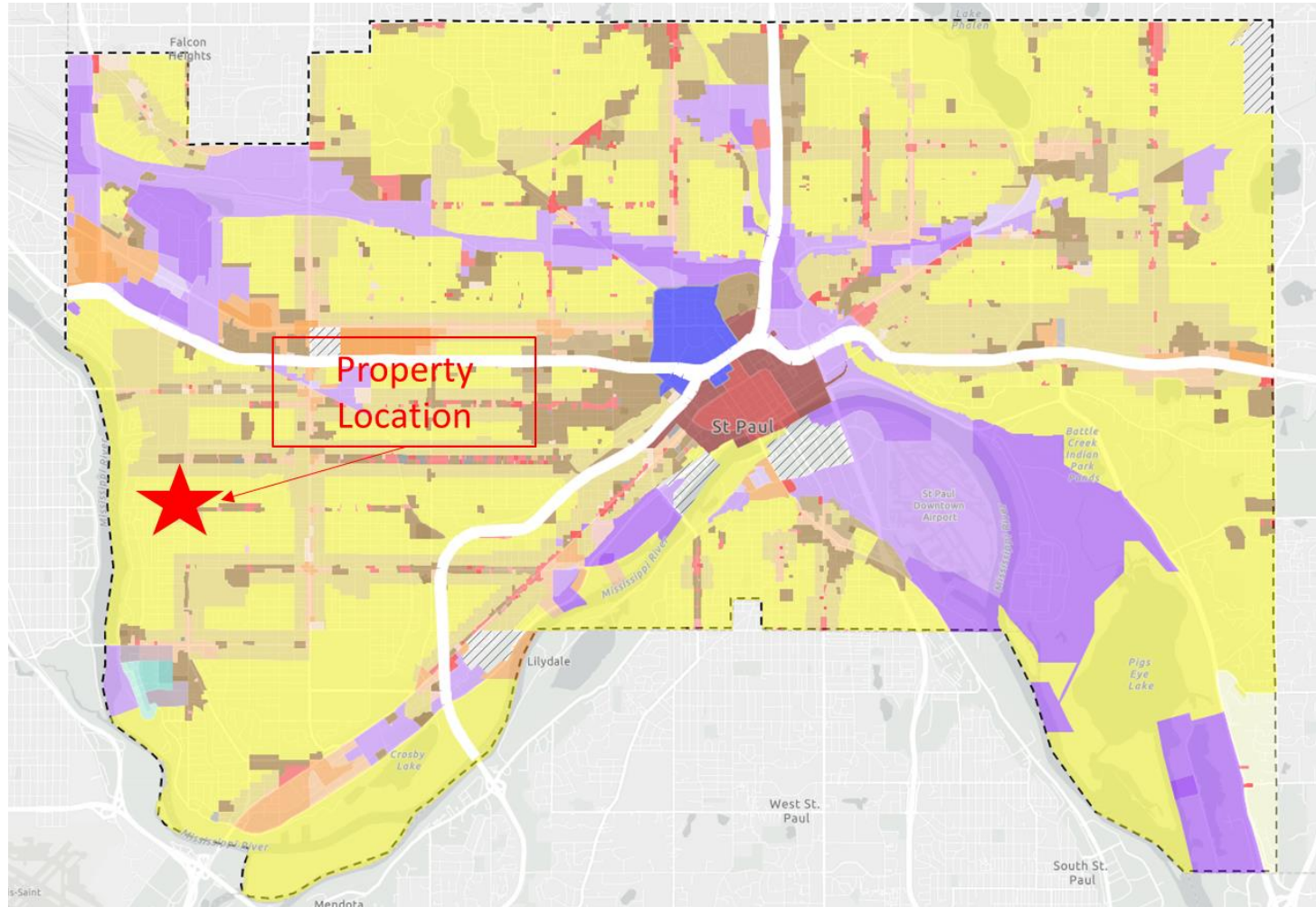
Aerial



Photos



Zoning Map



Permitted Uses Include: Religious Facility, Day care, One-family dwelling, Two-family dwelling, Multifamily dwelling, Home occupation, Adult care home, Foster home, Emergency housing facility, Public library, Public & private park, playground, School, Municipal building, Accessory use, and Dwelling unit.

Contacts



Ross Hedlund, CCIM, MBA
763-913-1689
ROSS.HEDLUND@TRADITION-CRE.COM



Hunter Williamson, CCIM
952-270-9599
HUNTER.WILLIAMSON@TRADITION-CRE.COM

About TCRE

Tradition Commercial Real Estate (TCRE) is a privately owned firm headquartered in Edina, Minnesota. TCRE is affiliated with Tradition Companies, a brand encompassing fifteen other privately owned companies.

At TCRE, we see our clients as so much more than just a number or a transaction, we see them as a family member and friend. Here every client has a deep relationship with one of our advisors. We are a partner in business and in life. We bring long term, strategic views to every relationship.

Our mission is our promise, providing our clients with unparalleled commercial real estate services and support with a commitment to delivering the best possible care and solutions.

Our vision is that every need for each client will be treated with our full commitment and support with the goal to provide the best possible solution to each project that we are entrusted with.