

±5.96-Acre Development Site

FOR SALE

NE corner of Rountree Rd & Roberts Dr
Riverdale, Georgia 30274



PROPERTY OVERVIEW

This ±5.96-acre parcel sits directly across from Riverdale High School on Roberts Drive. It is zoned O-I (Office Institutional) by the city of Riverdale. Ideal uses would be for affordable housing, a charter or private school, a community center or youth services complex, or a mixed-use project with nonprofit or faith-based anchors. This corner site (with Rountree Road) is gently sloped and most clear with some mature trees.

The property is located less than a mile east of the busy GA-85 commercial corridor, featuring Walmart Supercenter and Kroger, and less than a mile north of Hwy 138. It is surrounded by residential communities. Downtown Riverdale lies approximately 1.5 miles to the northwest. Hartsfield-Jackson Atlanta International Airport is approximately 7.4 miles north and downtown Atlanta is approximately 14.3 miles north of the subject.

Information contained herein may have been provided by the seller, landlord or other outside sources. While deemed reliable, it may be estimated, projected, limited in scope and is subject to change or inaccuracies. Pertinent information should be independently confirmed prior to lease or purchase offer or within an applicable due diligence period.



SALE PRICE:
\$900,000



SITE SIZE:
±5.96 AC



ZONING:
O-I

CONTACT



JARED DALEY
404-876-1640 x111
Jared@BullRealty.com



ANGIE SARRIS
404-876-1640 x176
Angie@BullRealty.com



MEGAN DALEY
404-876-1640 x153
Megan@BullRealty.com

BULL REALTY, INC.
50 Glenlake Parkway
Suite 600
Atlanta, GA 30328
BullRealty.com

±5.96-Acre Development Site

FOR SALE

NE corner of Rountree Rd & Roberts Dr
Riverdale, Georgia 30274



Information contained herein may have been provided by the seller, landlord or other outside sources. While deemed reliable, it may be estimated, projected, limited in scope and is subject to change or inaccuracies. Pertinent information should be independently confirmed prior to lease or purchase offer or within an applicable due diligence period.

CONTACT



JARED DALEY
404-876-1640 x111
Jared@BullRealty.com



ANGIE SARRIS
404-876-1640 x176
Angie@BullRealty.com



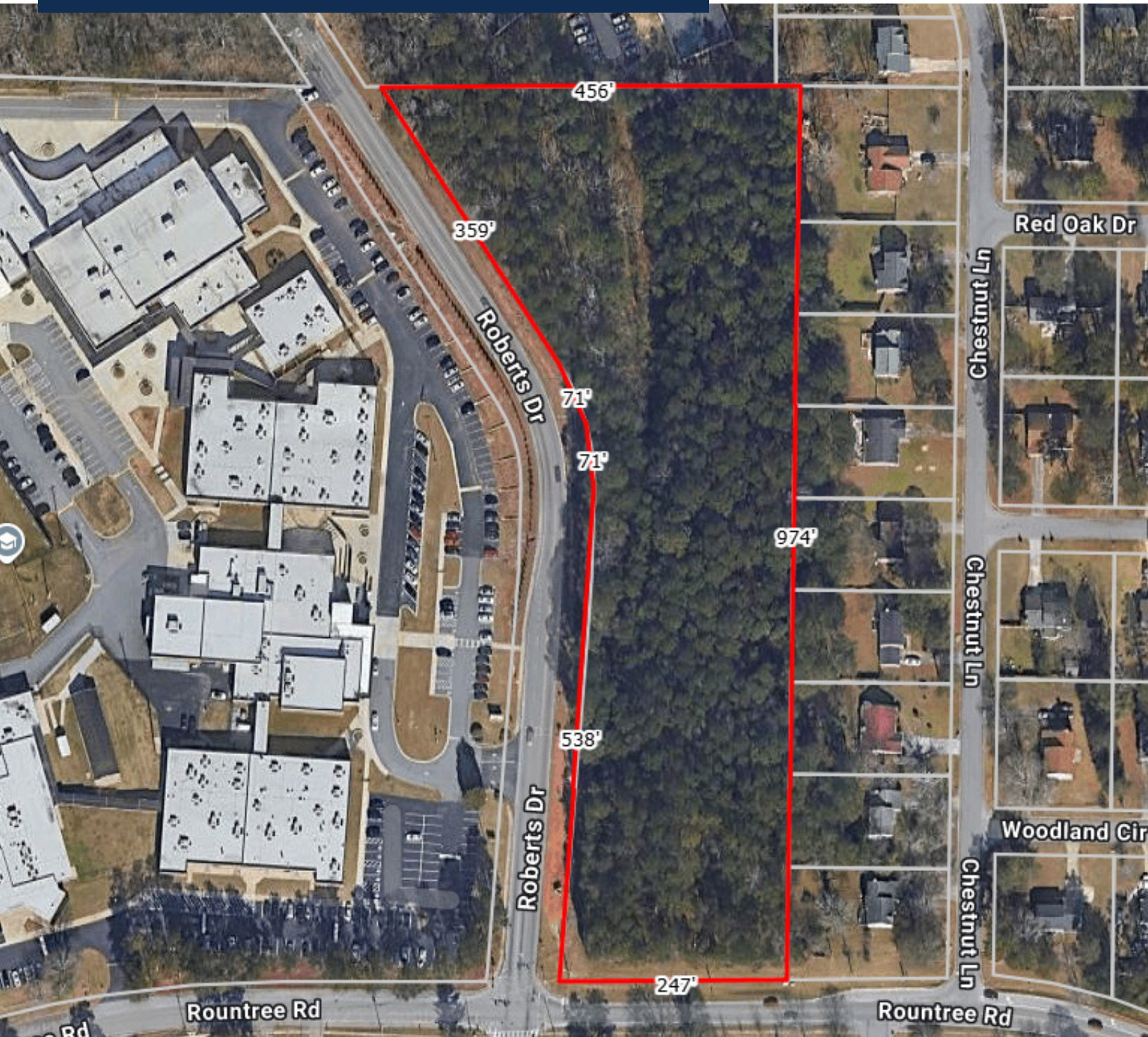
MEGAN DALEY
404-876-1640 x153
Megan@BullRealty.com

BULL REALTY, INC.
50 Glenlake Parkway
Suite 600
Atlanta, GA 30328
BullRealty.com

±5.96-Acre Development Site

FOR SALE

NE corner of Rountree Rd & Roberts Dr
Riverdale, Georgia 30274



Information contained herein may have been provided by the seller, landlord or other outside sources. While deemed reliable, it may be estimated, projected, limited in scope and is subject to change or inaccuracies. Pertinent information should be independently confirmed prior to lease or purchase offer or within an applicable due diligence period.

CONTACT



JARED DALEY
404-876-1640 x111
Jared@BullRealty.com



ANGIE SARRIS
404-876-1640 x176
Angie@BullRealty.com



MEGAN DALEY
404-876-1640 x153
Megan@BullRealty.com

BULL REALTY, INC.
50 Glenlake Parkway
Suite 600
Atlanta, GA 30328
BullRealty.com

±5.96-Acre Development Site

FOR SALE

NE corner of Rountree Rd & Roberts Dr
Riverdale, Georgia 30274



Information contained herein may have been provided by the seller, landlord or other outside sources. While deemed reliable, it may be estimated, projected, limited in scope and is subject to change or inaccuracies. Pertinent information should be independently confirmed prior to lease or purchase offer or within an applicable due diligence period.

CONTACT



JARED DALEY
404-876-1640 x111
Jared@BullRealty.com



ANGIE SARRIS
404-876-1640 x176
Angie@BullRealty.com



MEGAN DALEY
404-876-1640 x153
Megan@BullRealty.com

BULL REALTY, INC.
50 Glenlake Parkway
Suite 600
Atlanta, GA 30328
BullRealty.com




±5.96-Acre Development Site

FOR SALE

NE corner of Rountree Rd & Roberts Dr
Riverdale, Georgia 30274



DEMOGRAPHICS

	1-Mile	3-Mile	5-Mile
 Population	9,804	93,486	192,244
 Households	3,615	35,310	70,874
 Avg. Household Income	\$65,079	\$66,353	\$73,835

Source: 2025 ESRI

Information contained herein may have been provided by the seller, landlord or other outside sources. While deemed reliable, it may be estimated, projected, limited in scope and is subject to change or inaccuracies. Pertinent information should be independently confirmed prior to lease or purchase offer or within an applicable due diligence period.

CONTACT



JARED DALEY
404-876-1640 x111
Jared@BullRealty.com



ANGIE SARRIS
404-876-1640 x176
Angie@BullRealty.com



MEGAN DALEY
404-876-1640 x153
Megan@BullRealty.com

BULL REALTY, INC.
50 Glenlake Parkway
Suite 600
Atlanta, GA 30328
BullRealty.com