



FOR LEASE

MEDICAL OFFICE SPACE
AVAILABLE



30-32 RESNIK ROAD

30-32 Resnik Road, Plymouth, MA, 02360

For More Information:

BEN STOUT, CCIM
Managing Partner
bstout@atlanticproperties.com
781-248-6774

ROBERT PHINNEY
Vice President
rphinney@atlanticproperties.com
781-424-3099

LANE HEALTHCARE CENTER



PROPERTY DISCRIPTION

Medical Office space at the Lane Healthcare Center available. Located in the heart of the Plymouth Industrial Park with easy access to Rt. 3 & Rt. 44, the Lane Healthcare Center is tenanted with strong credit users such as Lane Oral Surgery Center and BID Plymouth.

OFFERING SUMMARY

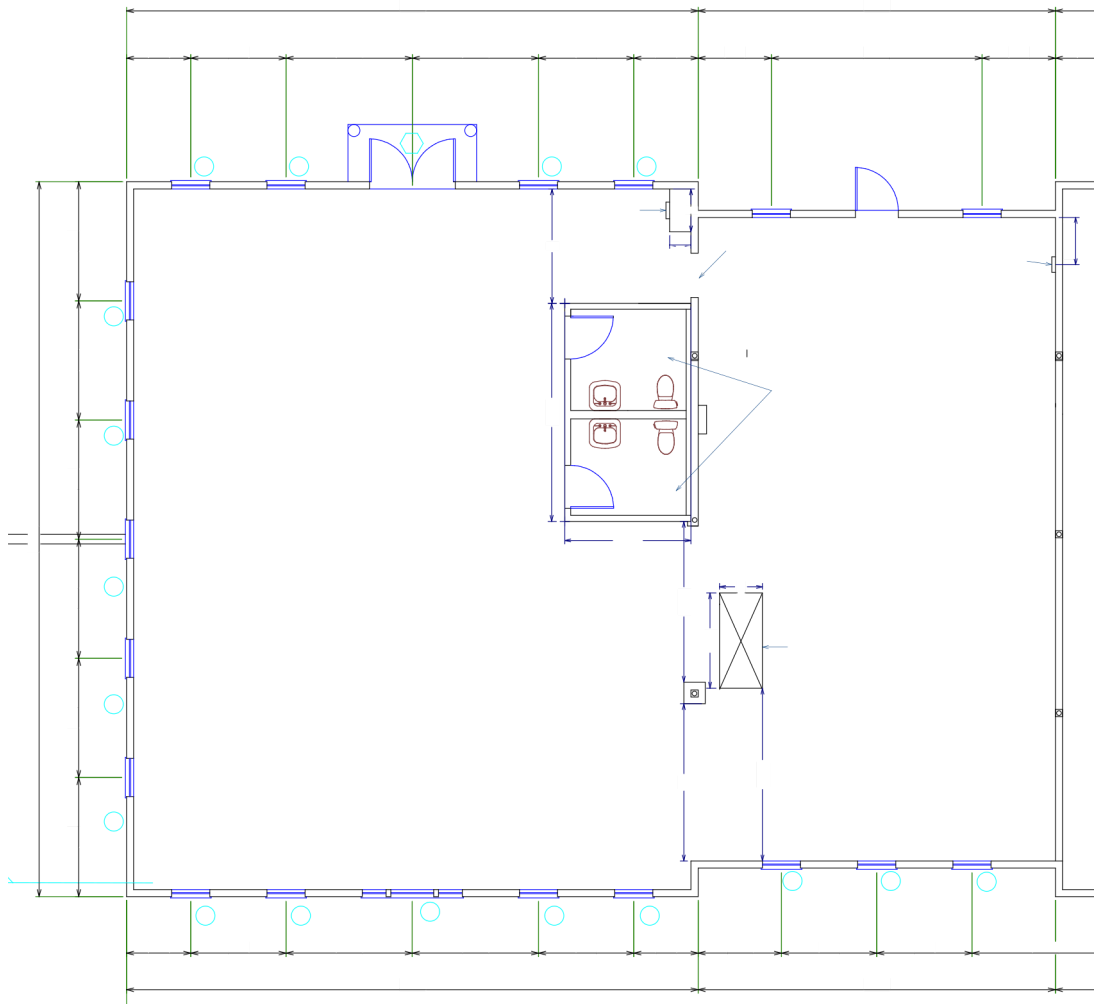
- \$27.00/SF plus NNN
- Lease Term: Negotiable
- Suites 4&5: 3,150 SF Available

PROPERTY HIGHLIGHTS

- Healthcare Suites Available
- ADA Compliant Building
- Ample Parking On-Site
- Direct access with private entrance to space
- Close proximity to BID Plymouth Hospital

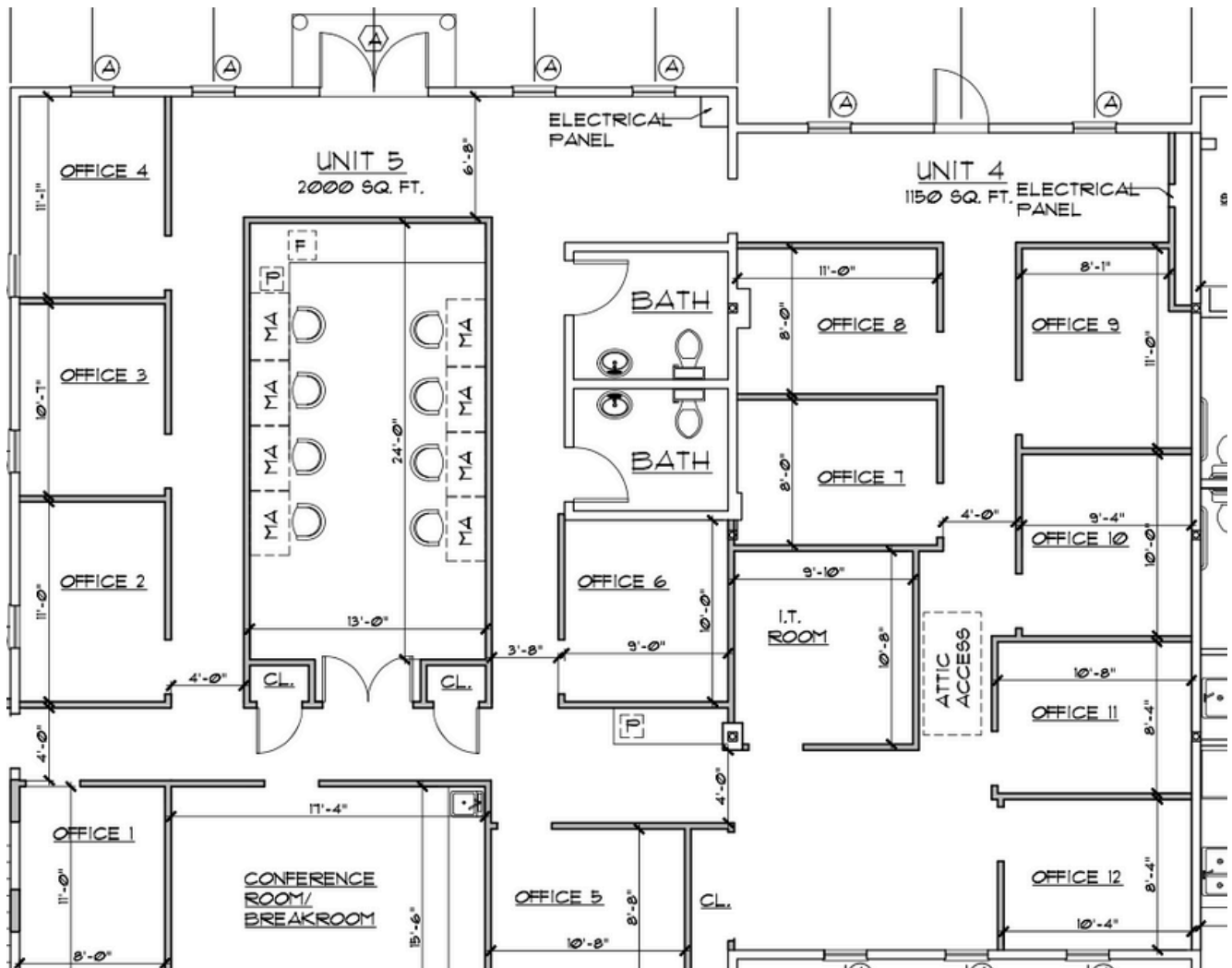
LANE HEALTHCARE CENTER

SUITES 485: 3,150 SF

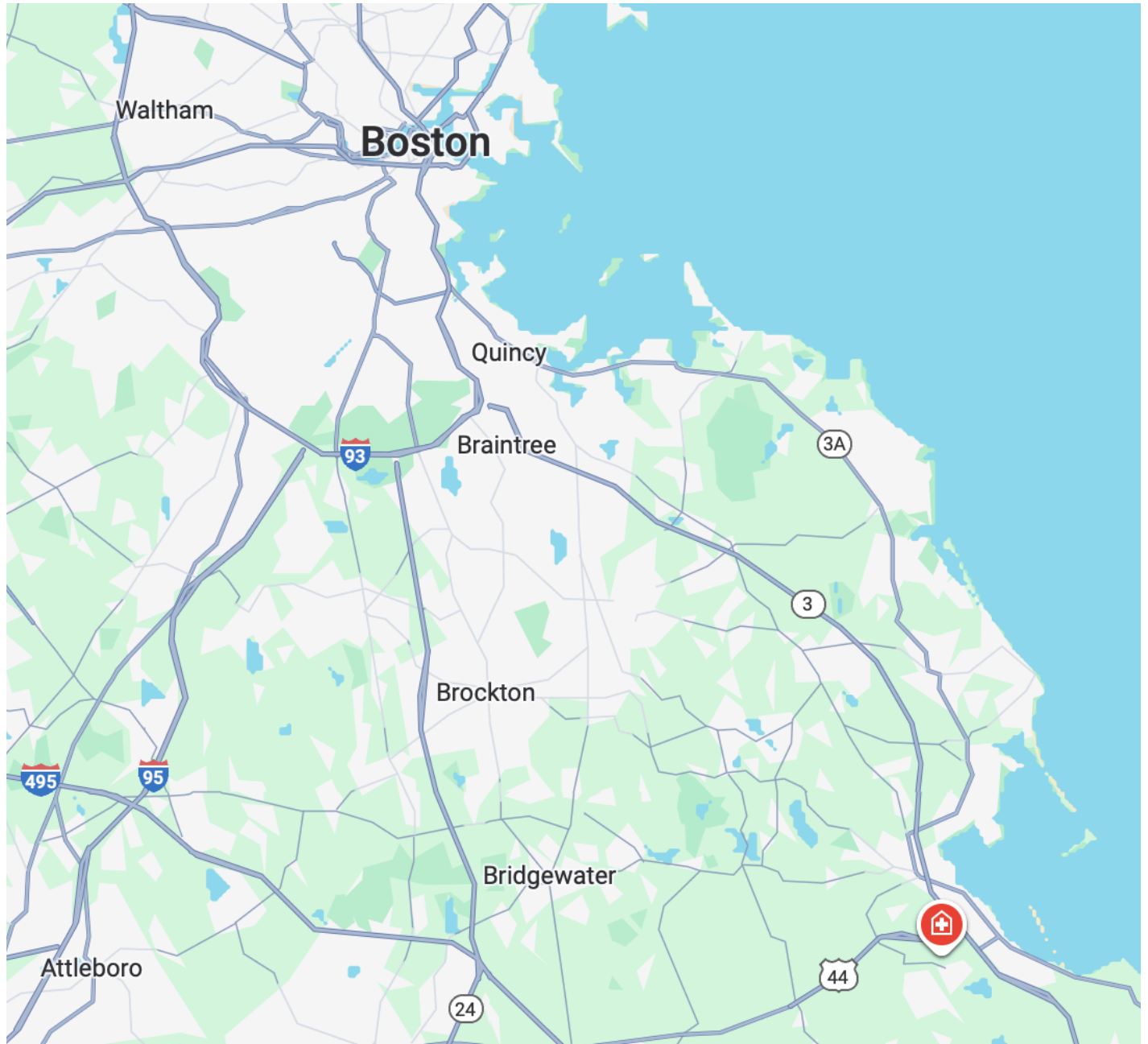


LANE HEALTHCARE CENTER

SUITES 4&5: 3,150 SF



LANE HEALTHCARE CENTER



30-32 RESNIK ROAD, PLYMOUTH, MA

ADDITIONAL PHOTOS

LANE HEALTHCARE CENTER

