



FOR LEASE



29495 NW WEST UNION, SUITE D

Industrial Space Available

± 5,824 SF including ± 239 SF Office | \$6,400 / mo / NNN

29495 NW West Union Rd, Suite D, North Plains, OR 97133

Located in highly desirable Washington County North Plains area within minutes of Hwy 26. Space includes brand new office and bathroom construction as well as newly painted interior warehouse walls and roof insulation.

SCOTT MILLER

Senior Vice President | Licensed in OR

971-275-0341

scottm@capacitycommercial.com

ALLEN PATTERSON, SIOR

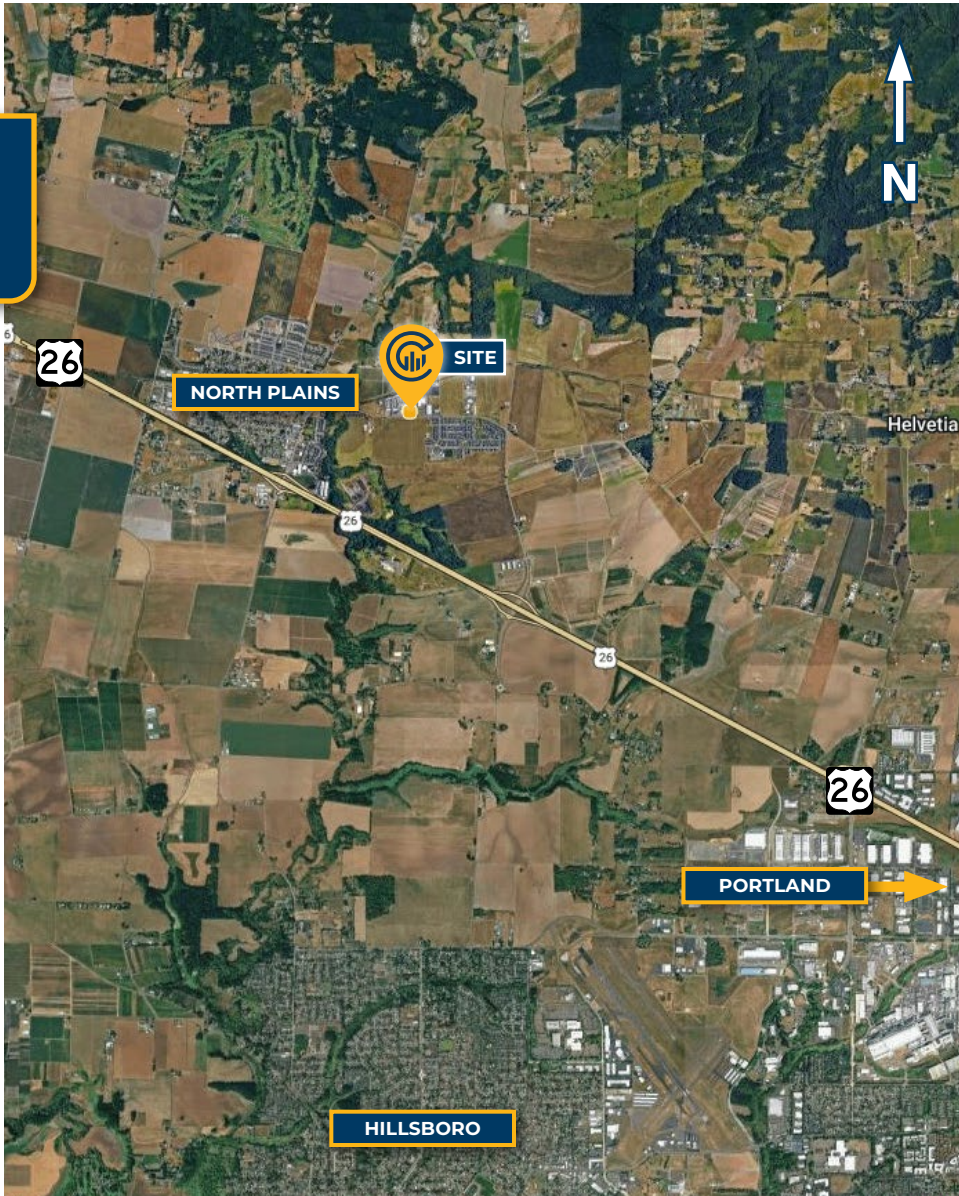
Senior Vice President | Licensed in OR

503-781-4015

allen@capacitycommercial.com



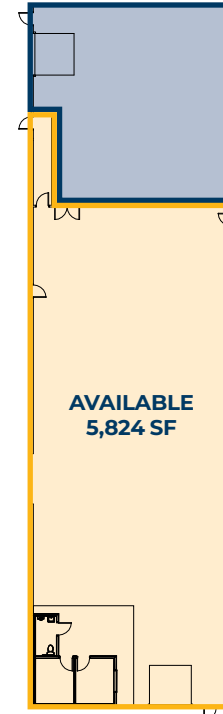
PROPERTY SUMMARY



*Average Daily Traffic Volume | Traffic Counts are Provided by REGIS Online at SitesUSA.com ©2025 | Map data ©2025 Google Imagery ©2025, Airbus, CNES / Airbus, Maxar Technologies, Metro, Portland Oregon, Public Laboratory, State of Oregon, U.S. Geological Survey, USDA/FPAC/GEO

PROPERTY DETAILS

Address	29495 NW West Union Rd, Suite D North Plains, OR 97133
Available Space	± 5,824 SF
Office	± 239 SF
Grade Door	One (1) Drive-In Bay Door
Power	Extensive electrical service
Lighting	LED in office & warehouse
Fire Sprinklers	Yes
Construction	Concrete tilt up construction
Lease Rate	\$6,400 / mo / NNN



FOR LEASE



SCOTT MILLER
Senior Vice President | Licensed in OR
971-275-0341
scottm@capacitycommercial.com

ALLEN PATTERSON, SIOR
Senior Vice President | Licensed in OR
503-781-4015
allen@capacitycommercial.com