

Jones Lang LaSalle Brokerage, Inc.,
Real estate license #01856260

WORK AT

19TEN SUNSET

LOS ANGELES – CALIFORNIA



WELCOME TO 19TEN

**Dedicated to creative expression
and limitless inspiration.**

Located on Sunset Boulevard, 19Ten is embedded at the center of L.A.'s hottest neighborhoods for the arts and entertainment industry. This enclave has recently undergone a renaissance and is known for its growing community of makers and thinkers who live and work in a hub for art, music, and experience.

+ LIFESTYLE AMENITIES

L.A.'s top eateries and essential shops at your doorstep

+ EXPLORER'S PARADISE

97 Walk Score

+ IN GOOD COMPANY

10 minutes to DTLA and Hollywood

A 5 MINUTE WALK

**17 LUNCH
FAVORITES**

**6 COFFEE
SHOPS**

**7 DRINK
SPOTS**

**2 WEEKEND
MARKETS**

Address:

1910 West Sunset Boulevard
Los Angeles, California 90026

Building Size:

99,761 SF

Suite Sizes:

1,059 - 3,129 RSF

Parking:

On-Site

Availability:

Now

[Spec Suite Virtual Tour](#)



DISCOVER THE EASTSIDE

ECHO PARK & SILVERLAKE



COMMUNITY FAVORITES



EATS

Triple Beam Pizza

Sticky Rice

Masa

Sage Plant Bistro & Brewery

Honey Hi

Monty's Good Burger

Ostrich Farm

Hard Times Pizza

Larchmont Bungalow Cage

Chipotle

Mohawk Bend

Silverlake Ramen 2Go



COFFEE

Stories

Silverback

Woodcat

Stereoscope

Starbucks

Tierra Mia



BARS

Bar Flores

Lowboy

Bar Calo

Little Joy

Short Stop

Sunset Beer

Semi Tropic



MUSIC VENUES

The Echoplex

The Echo

Bootleg

Club Bahia

Stories

Silverlake

Lounge

Los Globos

El Cid

The Lyric

Dodger

Stadium



WELLNESS

Erewhon

Crossfit Echo Park

Carbon Health

Stronghold Climbing Gym

Echo Park Lake

Elysian Park

The Strength Shoppe

The Now Massage

PHAROS

Lassen's

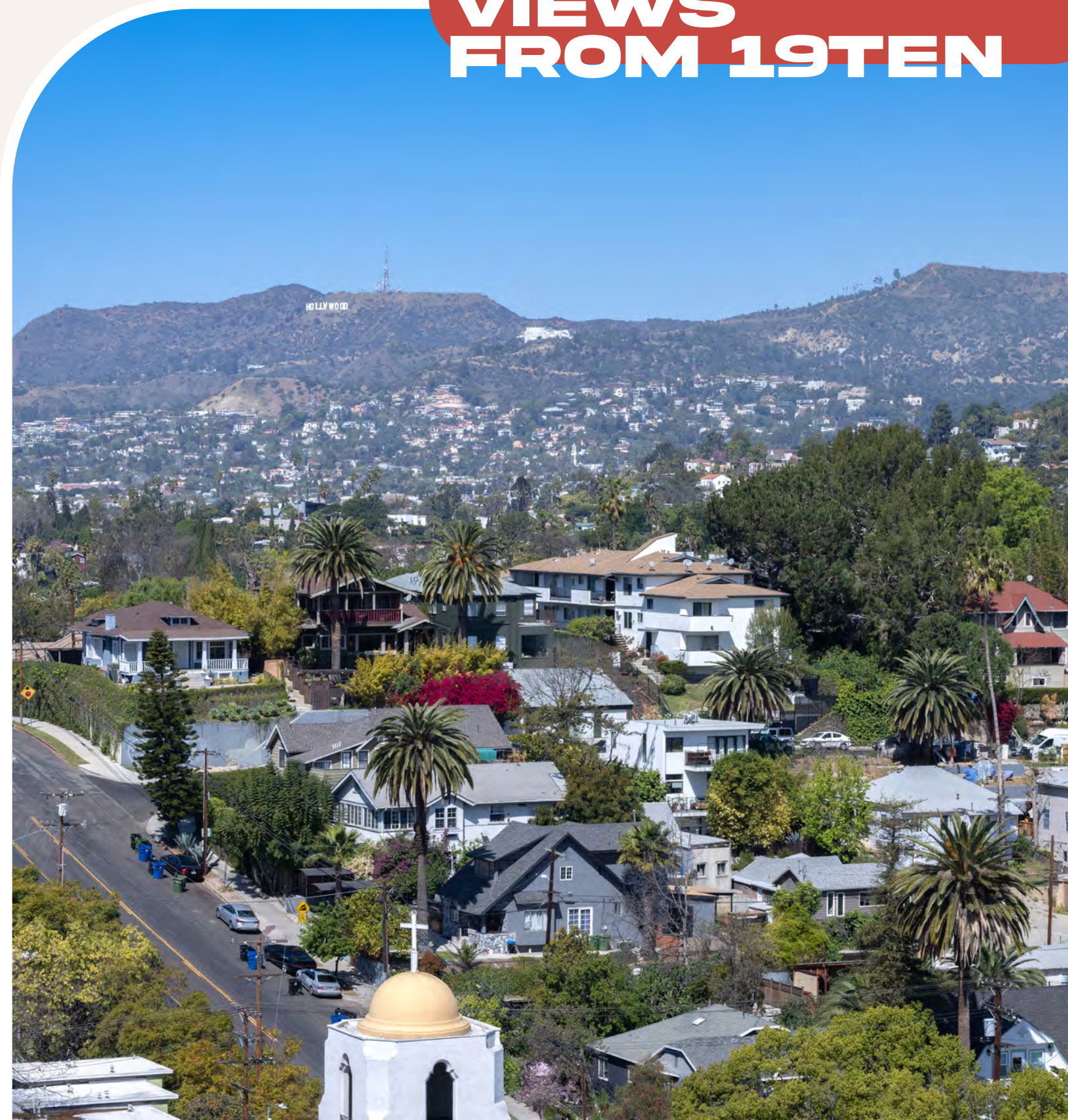
Echo Park Farmer's Market

Silverlake Flea Market

Walgreens



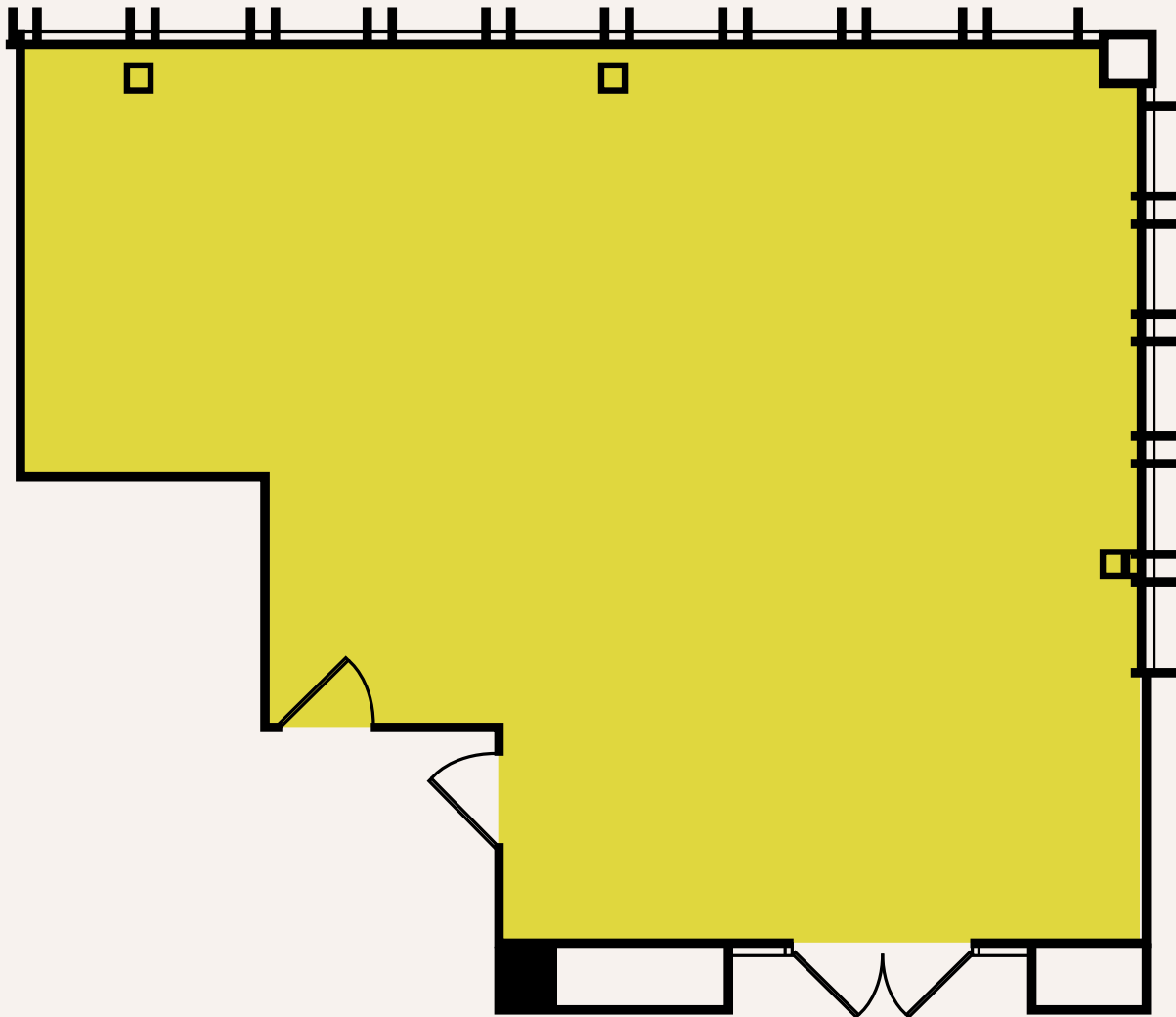
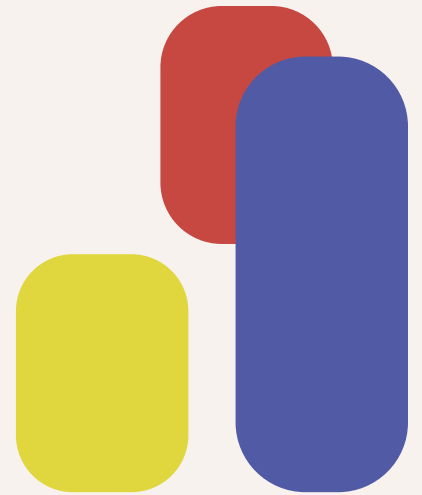
VIEWS FROM 19TEN

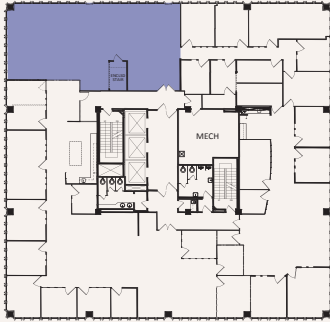
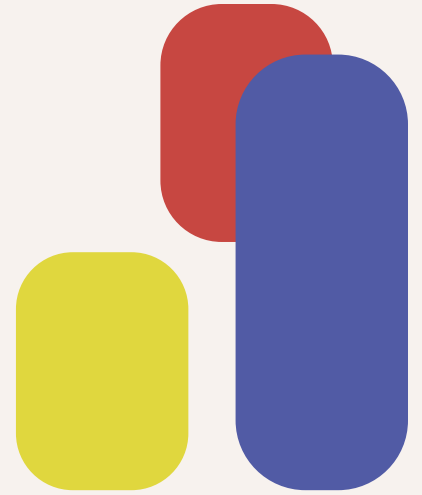


Suite 150

1,041 RSF

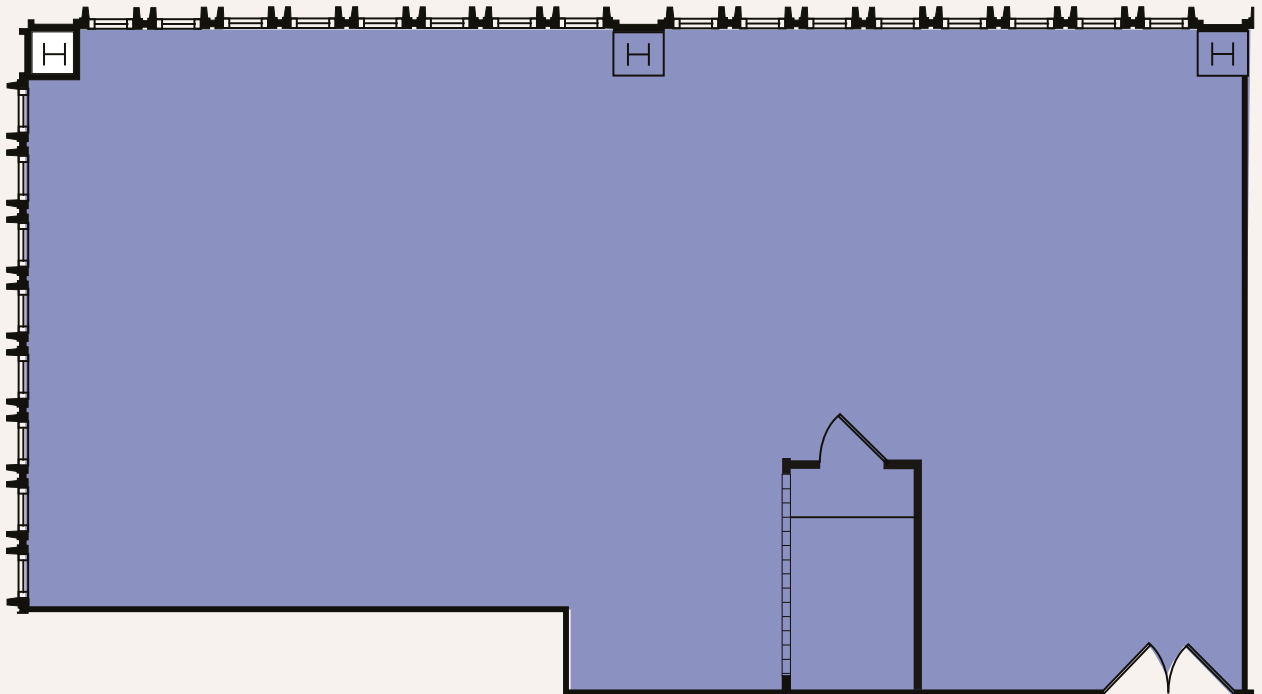
Restaurant/Retail Space

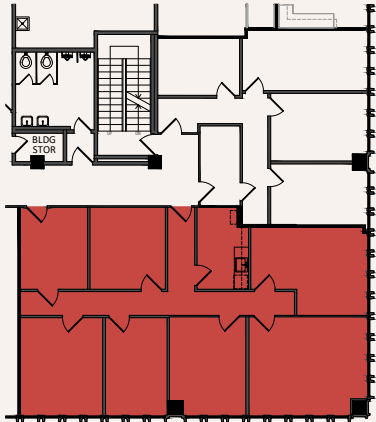




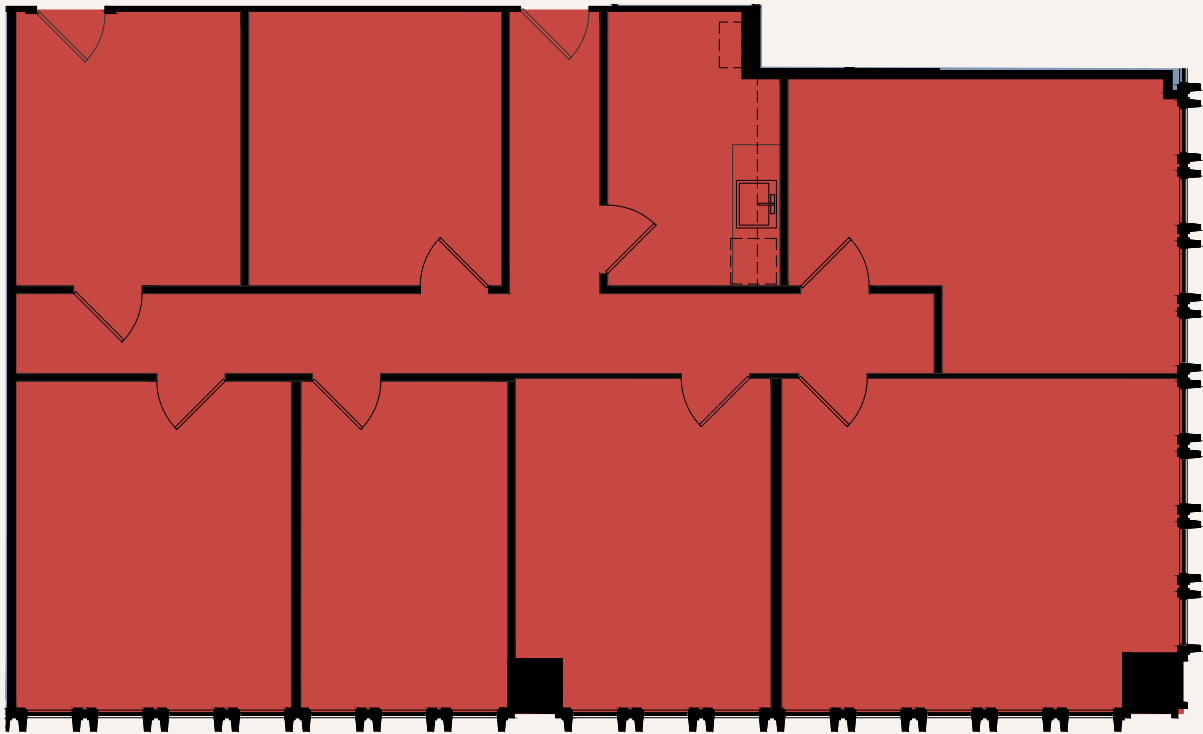
Suite 200

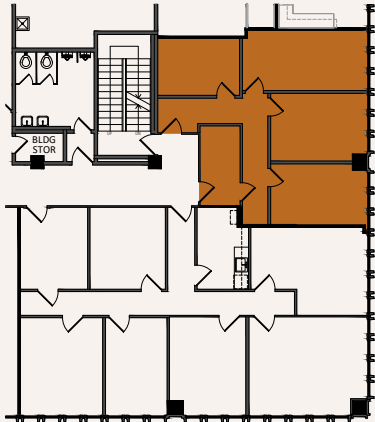
2,181 RSF



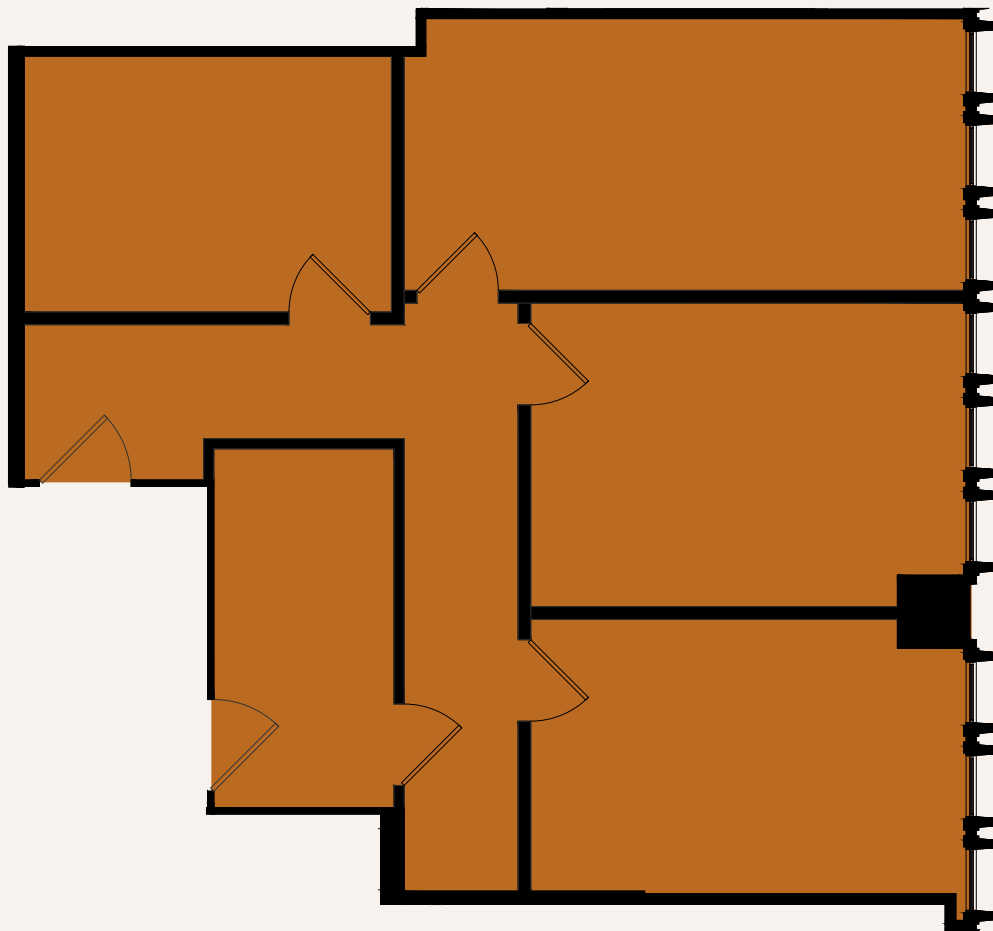


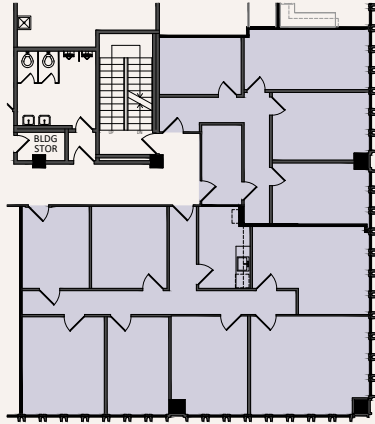
Suite 440 ● ——— ● **2,070 RSF**
Available now



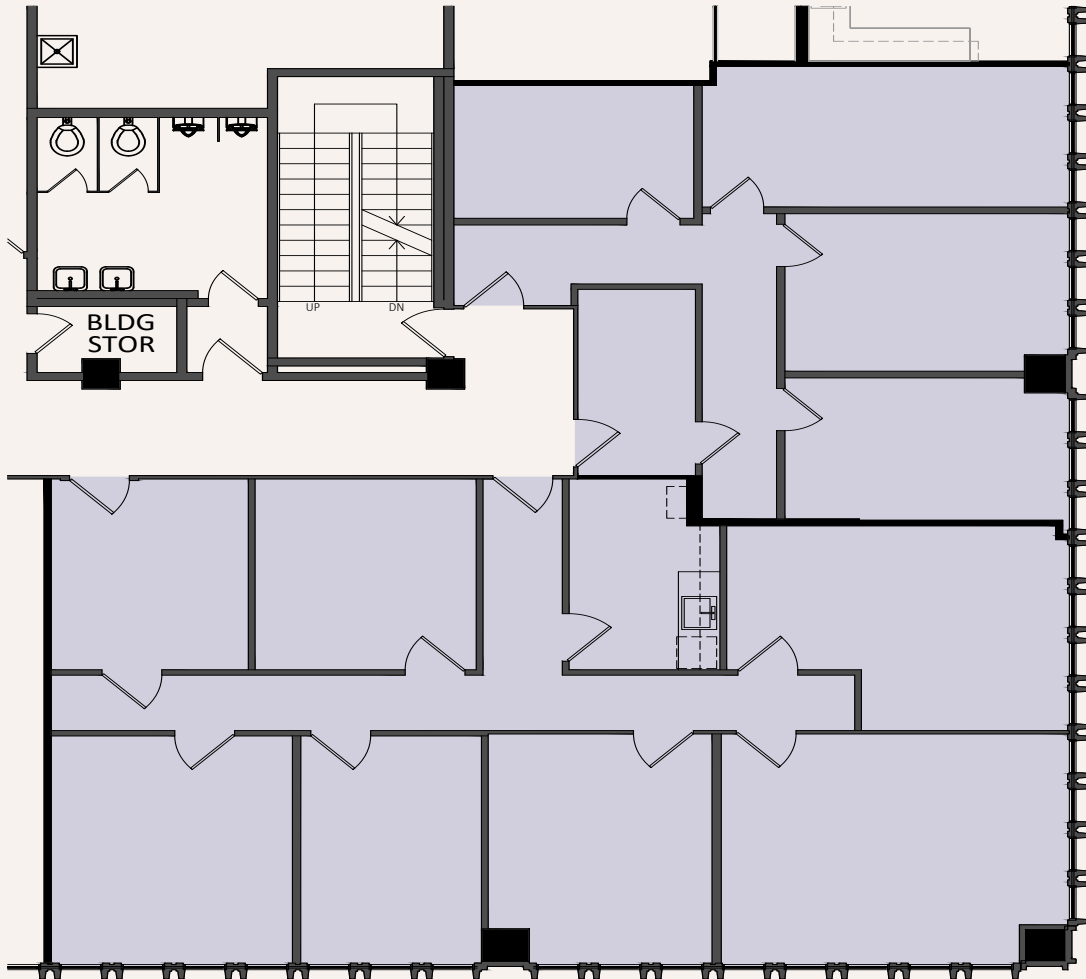


Suite 460 ● ——— ● **1,059 RSF**
Available now





Suite 440 & 460 ●———● **3,129 RSF**
Available now



EXAMPLE SPEC SUITE RENDERINGS





EXAMPLE SPEC SUITE RENDERINGS





19TEN SUNSET

LOS ANGELES - CALIFORNIA

FOR LEASING INFORMATION

CAL ROSS

Vice President, LIC #01892435

cal.ross@jll.com

+1 213 239 6339

DANA VARGAS

Senior Vice President, LIC #01943620

dana.vargas@jll.com

+1 213 239 6121



Downtown Los Angeles Office

515 Flower St # 1300, Los Angeles, CA 90071

Although information has been obtained from sources deemed reliable, neither Owner nor JLL makes any guarantees, warranties or representations, express or implied, as to the completeness or accuracy as to the information contained herein. Any projections, opinions, assumptions or estimates used are for example only. There may be differences between projected and actual results, and those differences may be material. The Property may be withdrawn without notice. Neither Owner nor JLL accepts any liability for any loss or damage suffered by any party resulting from reliance on this information. If the recipient of this information has signed a confidentiality agreement regarding this matter, this information is subject to the terms of that agreement. © 2025 Jones Lang LaSalle IP, Inc. All rights reserved.