



3001 1/2 Gill St. Suite A
Bloomington, IL 61704

axis360.co

1006 JC PARKWAY BLOOMINGTON, IL

New Ownership, New Opportunities



BUILDING SIZE

13,760 SF

YEAR BUILT

2005

LEASE TYPE

NNN: \$4.00/SF estimated

AVAILABLE SPACE

1,200-4,720 SF

LEASE RATE

\$13.00-20.00/SF

PARKING

79

This property is a multi-tenant retail strip center shadow anchored by Walmart, located just off the I-74/I-55 Interstate interchange. The property is less than 5 minutes to Rivian Automotive and to Downtown Bloomington. Property will be anchored by Cookies cannabis dispensary.

SUITE 100-101: 2,400 SF

- Former cell phone store, finished retail box, large showroom, back storage room, restrooms

SUITE 102: 1,440-4,720 SF

- Raw unfinished space

SUITE 103-104: 3,280-4,720 SF

- Raw unfinished space

SUITE 105: 1,280 SF

- Raw unfinished space

SUITE 106: 1,200 SF (finished salon)

- Former salon space

SUITE 107: 1,200 SF

- Retail box, open with restroom



The statements and figures herein, while not guaranteed, are secured from sources we believe authoritative. This information is for illustrative purposes only.

Meghan O'Neal-Rogozinski, CCIM

meghan.oneal@axis360.co

309-532-1808

Michael O'Neal

moneal@axis360.co

309-530-3591





3001 1/2 Gill St. Suite A
Bloomington, IL 61704

axis360.co

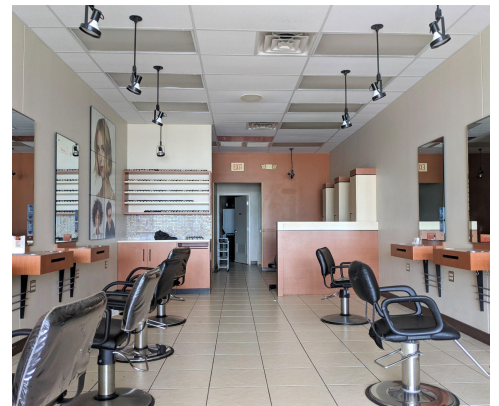
1006 JC PARKWAY BLOOMINGTON, IL



Planned for 2023



Former Hair Cuttery space:



Meghan O'Neal-Rogozinski, CCIM

meghan.oneal@axis360.co

309-532-1808

Michael O'Neal

moneal@axis360.co

309-530-3591

