

# Investment Opportunity

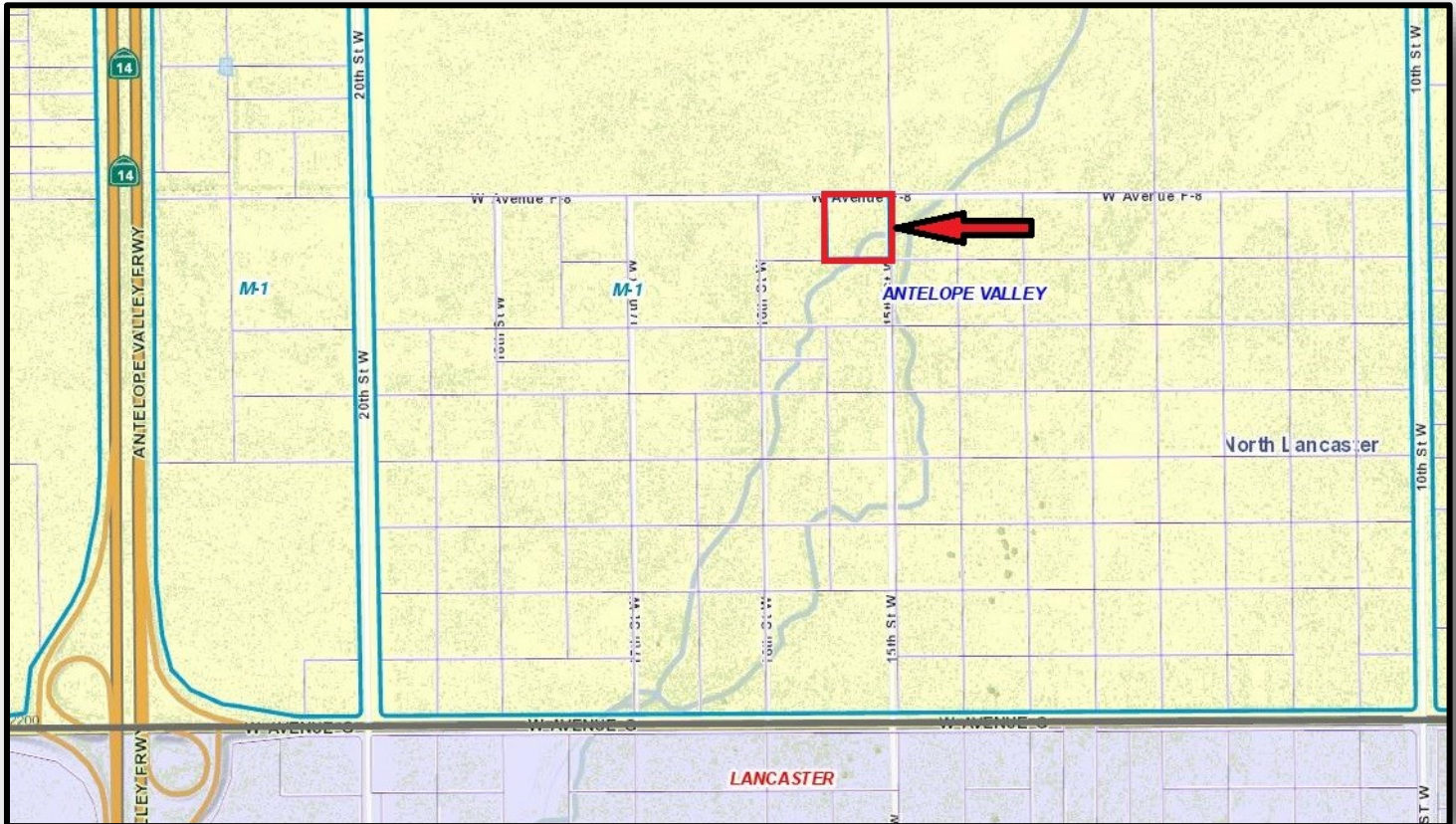
Avenue F-8 & 15th St West

FOR SALE



VALLEY REALTY

Unincorporated area of Lancaster, CA



## PROPERTY OVERVIEW

Good level property in the path of development just east of the #14 Freeway, aka "Aerospace Highway". This parcel is located at the SWC of F-8 and 15th West, just 1/2 mile north of the city limits of Lancaster, with nearby Freeway access at both Ave F and Ave G. The current zoning is M-1 with a Land Use designation of IL (*Industrial Light*), this property offers a great location for future industrial uses!

## DETAILS

Price:	\$32,500
Terms:	Cash
APN:	3118-018-015
Lot Size:	2.5+/- ac
Zoning/Land Use:	M-1/IL
Dimensions:	330' x 330'

## FOR MORE DETAILS CONTACT:

Harvey Holloway BRE #0594721  
harvey@cbcvalleyrealty.com

Direct 661-948-2644 x 22  
Cell 661-609-8173

Main 661-948-2644  
Fax 661-945-2524

**CBCValleyrealty.com**

Coldwell Banker Commercial and the Coldwell Banker Commercial Logo are registered service marks licensed to Coldwell Banker Real Estate LLC. Each Office is Independently Owned and Operated.

42402 N. 10th Street West Ste "E"  
Lancaster, CA 93534

# Investment Opportunity

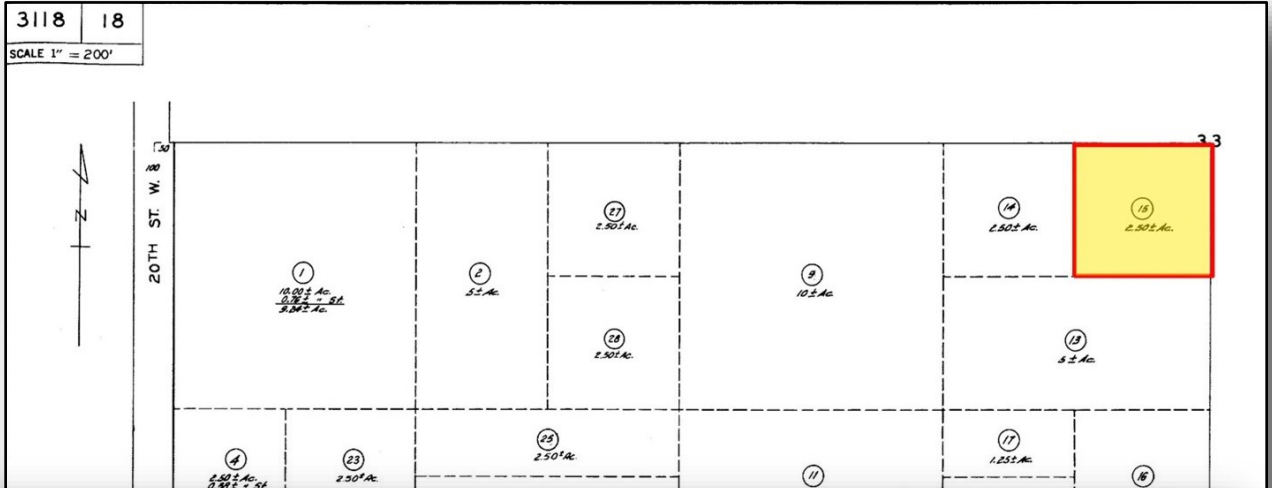
**Avenue F-8 & 15th St West**

**FOR SALE**



VALLEY REALTY

Unincorporated area of Lancaster, CA



**FOR MORE DETAILS CONTACT:**

Harvey Holloway BRE #0594721  
[harvey@cbcvalleyrealty.com](mailto:harvey@cbcvalleyrealty.com)

Direct 661-948-2644 x 22  
 Cell 661-609-8173

Main 661-948-2644  
 Fax 661-945-2524

**CBCValleyrealty.com**

Coldwell Banker Commercial and the Coldwell Banker Commercial Logo are registered service marks licensed to Coldwell Banker Real Estate LLC. Each Office is Independently Owned and Operated.

42402 N. 10th Street West Ste "E"  
 Lancaster, CA 93534