

320 South La Brea Ave

Inglewood, California 90301

\$1.75 /SF/MO NNN | 4,200 SF Building
2022 NNN Expense: **\$.17** /SF/MO

Property Highlights

- Landmark 1940's Art Deco Single Tenant Building Located in Downtown Inglewood's Historic Core Area - Near Metro Transit, Restaurants, The Forum and So-Fi Stadium
- Large Open Space Area with Open-Beam Truss Ceilings and Brick Walls
- Custom Roll-Up Door Approx. 9' Tall by 8' 6" Wide
- Approx. 13 Parking Spaces (4 in Front, 3 Alley & 6 Tandem)
- Lobby / Reception Area, Private Office Space, Store Front & Storage
- Large Eye-Catching Signage Opportunity on the Front of the Building
- Zoned Historic Core Provides a Mix of Uses Including: Retail, Restaurants, Services, & Offices
- Potential Drive-Thru Opportunity
- High Traffic Volume: 21,657 Cars Per Day on La Brea Ave



WOODY STAHL

(310) 710-3829

WOODY@LYONSTAHL.COM

DRE - 01399621

BRETT LYON

(310) 780-1899

BRETT@LYONSTAHL.COM

DRE - 01717818

For Lease

**320 South La Brea Ave
Inglewood CA, 90301**

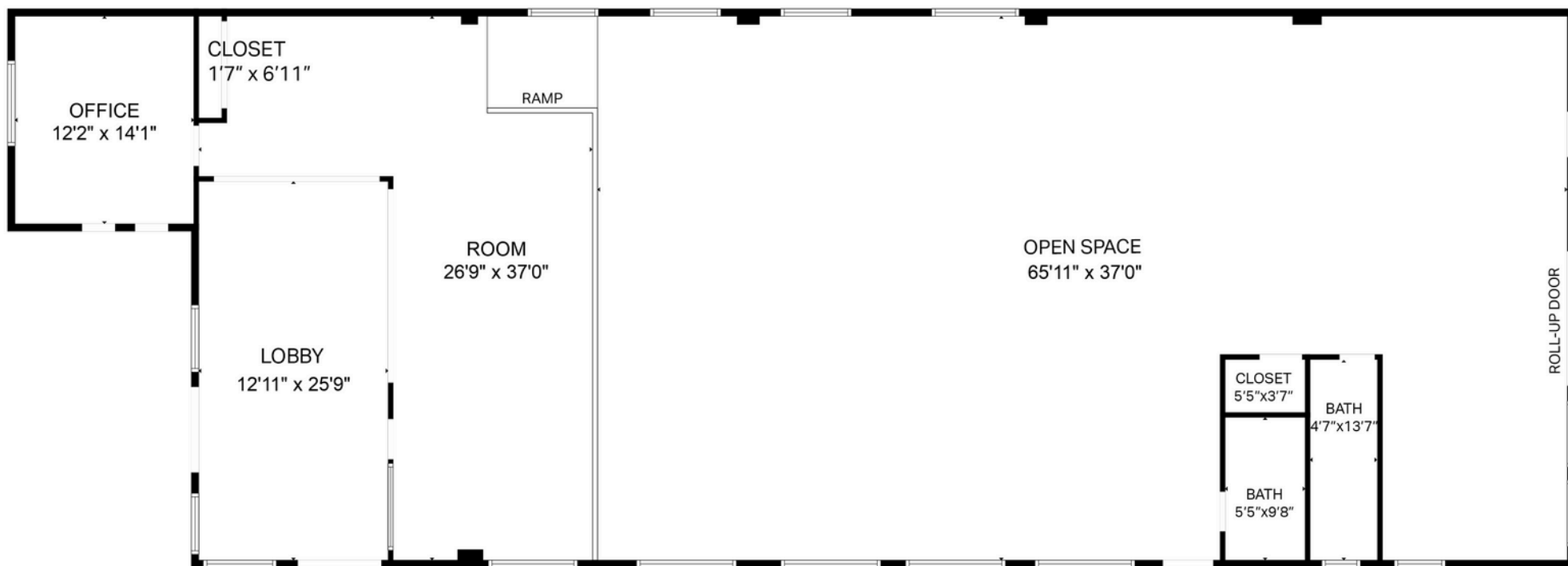
320 South La Brea Ave: 1948 Post-War Gem

Identified as the "second most" architecturally relevant building in the Historic District, this building's unique attributes offer businesses the opportunity for excellent signage, great parking and a large open space area that has many possibilities.

[Click Here to See Approved Uses](#)

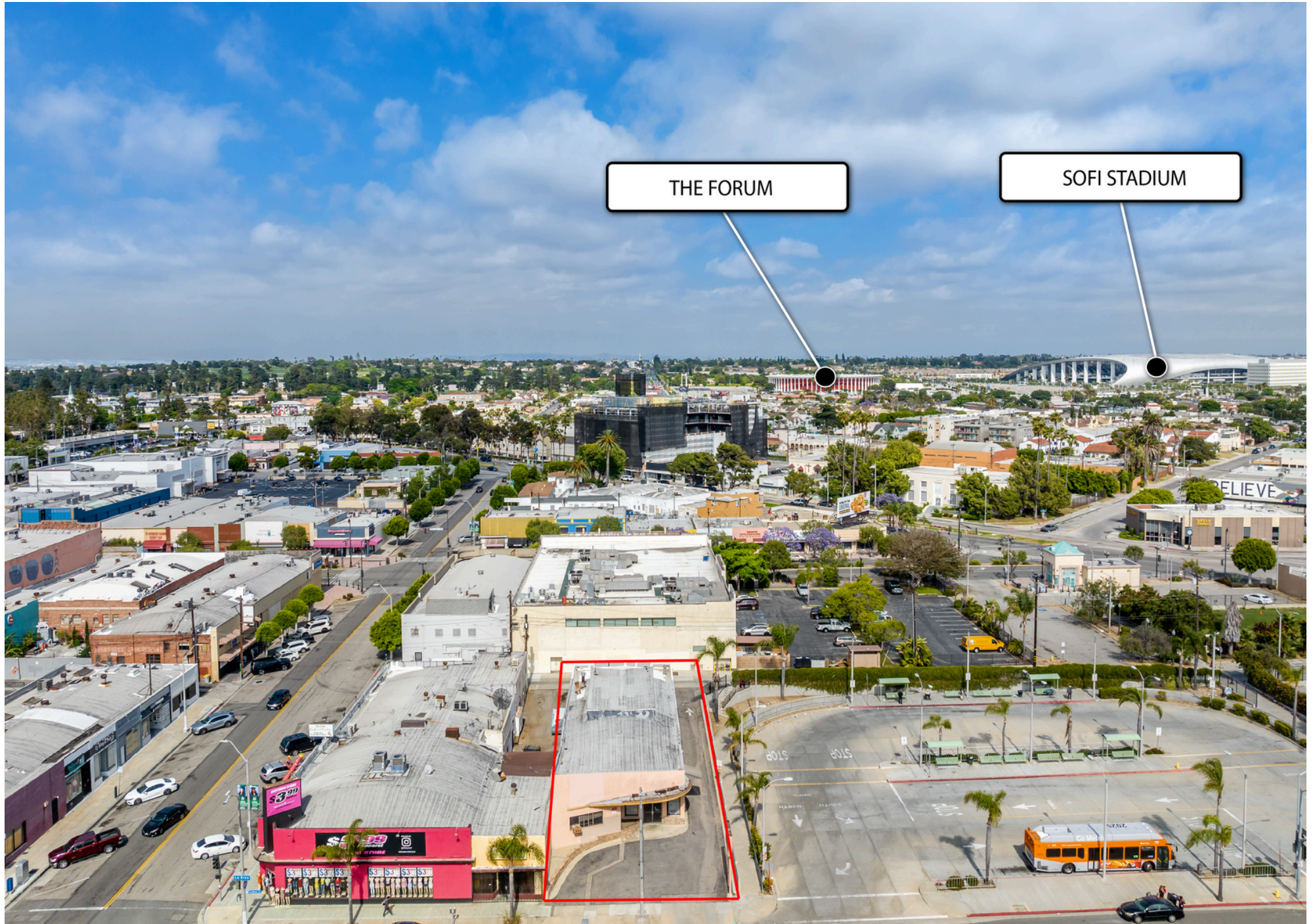
Page 38 & 39





320 S LA BREA AVE

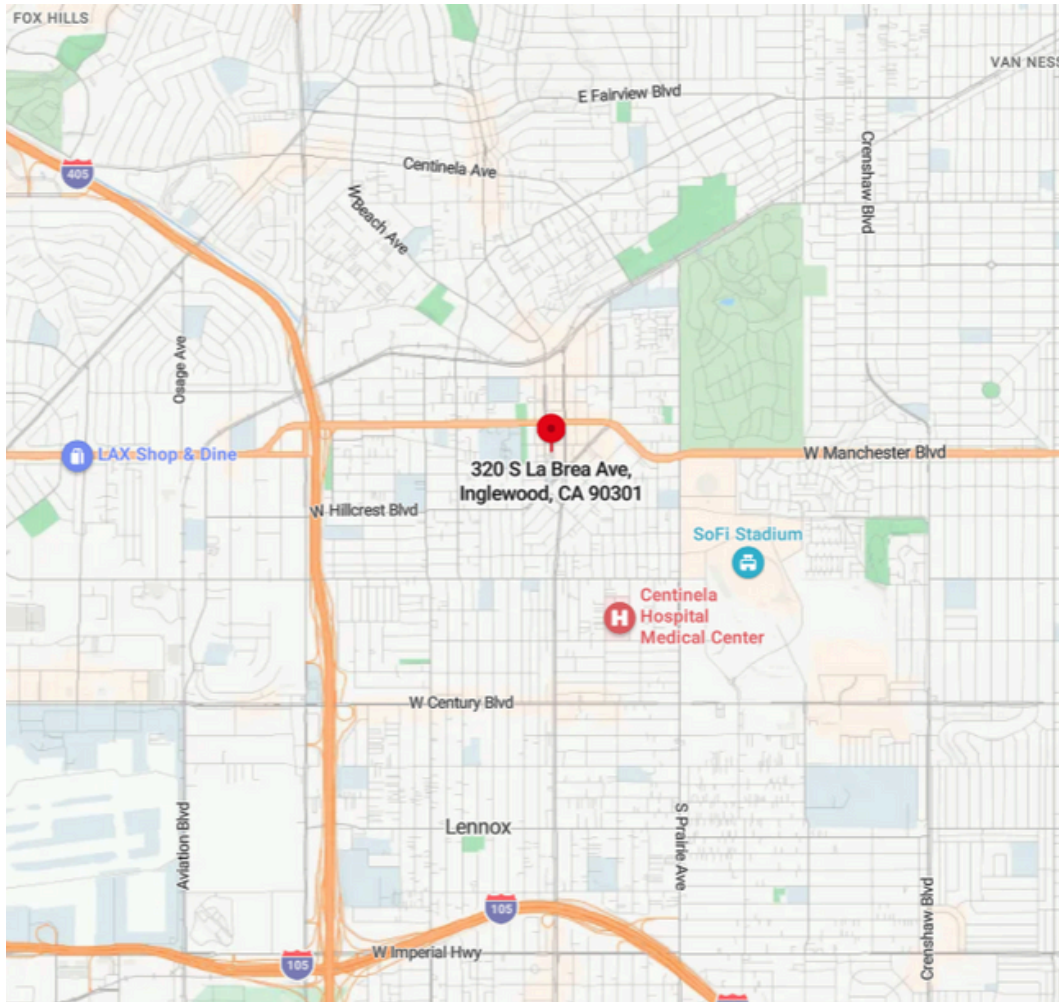
MEASUREMENTS ARE CALCULATED BY CUBICASA TECHNOLOGY. DEEMED HIGHLY RELIABLE BUT NOT GUARANTEED.



For Lease

**320 South La Brea Ave
Inglewood CA, 90301**

LOCATION MAP



[CLICK HERE FOR FULL SIZED PHOTOS](#)



WOODY STAHL

(310) 710-3829

WOODY@LYONSTAHL.COM

DRE - 01399621

BRETT LYON

(310) 780-1899

BRETT@LYONSTAHL.COM

DRE - 01717818

LYON STAHL INVESTMENT REAL ESTATE

239 OREGON STREET

EL SEGUNDO, CA 90245

WWW.LYONSTAHL.COM