

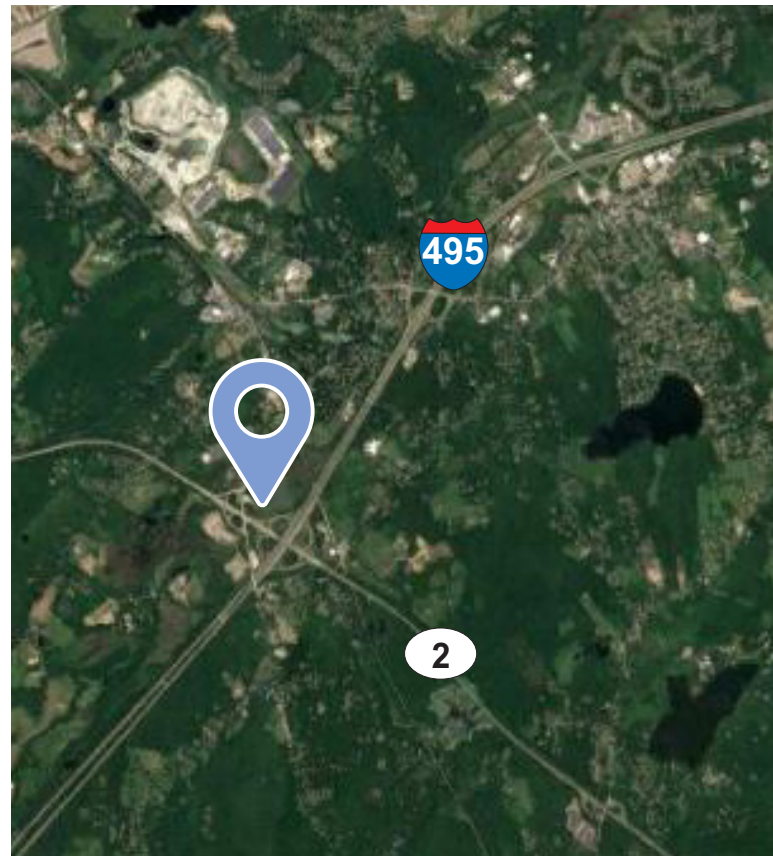
24 Porter Road

Littleton, MA

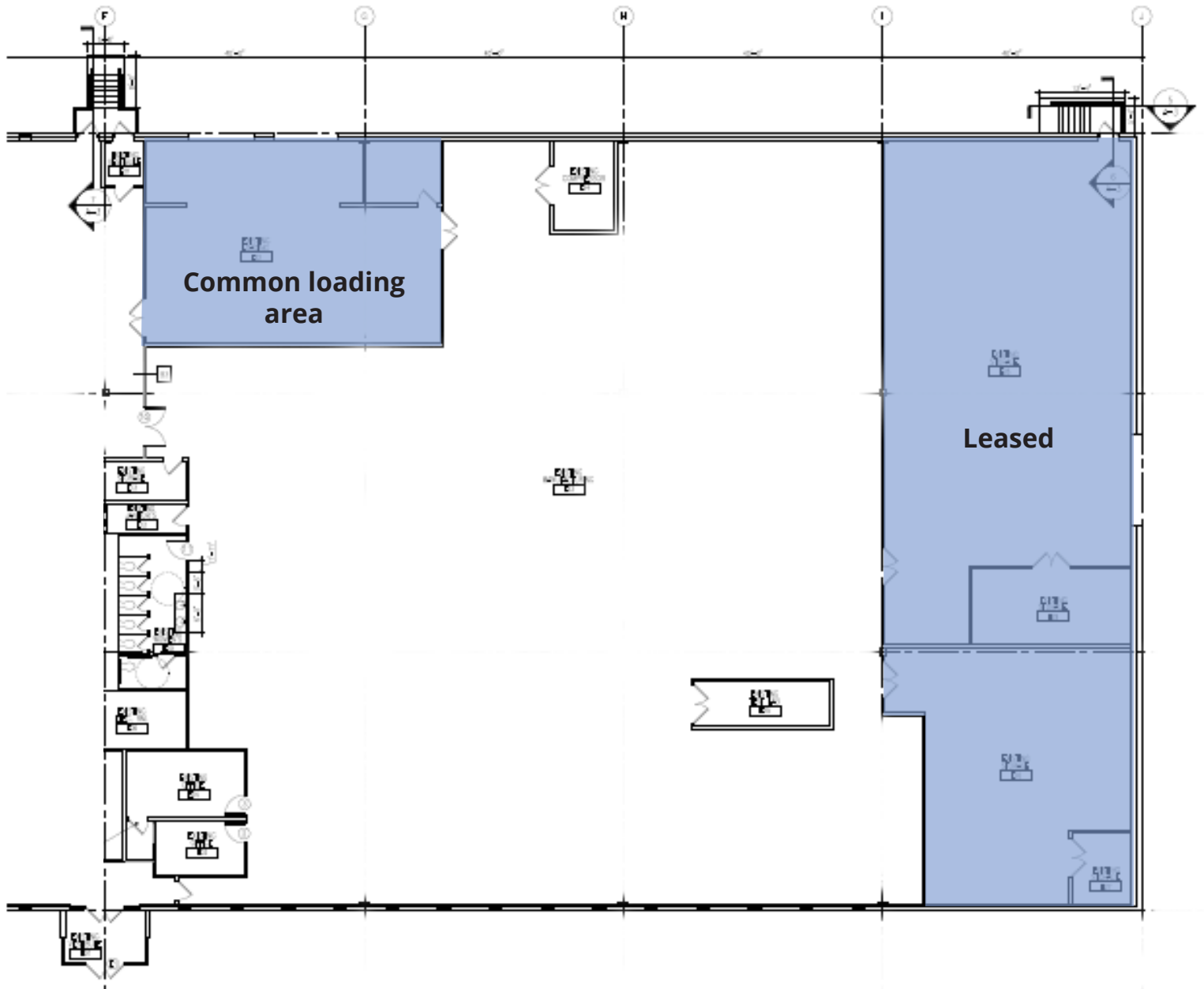


18,200 SF for lease

Building size:	43,200 RSF
Available space:	18,200 SF (Subdividable down to 6,000 SF)
Year built/renovated:	1975/1996
Zoning:	Industrial A
Column spacing:	40' x 40'
Parking:	2.5 spaces per 1,000 SF
Clear height:	15'6"
HVAC:	Fully Air Conditioned (Rooftop Mounted Units)
Loading:	Two (2) Tailboard Docks and One (1) Overhead Drive- In
Utilities:	<ul style="list-style-type: none">Electricity: Littleton Light and ElectricSeptic SystemGas: National Grid
Sprinkler:	Wet
Power:	1,600 AMPS @ 277/480V



Floor plan | 18,200 SF for lease



For more information, please contact:

Tom Aitken
617.758.8475
tom.aitken@avisonyoung.com

Jon Pezzoni
617.758.8742
jon.pezzoni@avisonyoung.com

**AVISON
YOUNG**