



REAL
ESTATE



3400 Southpark Place Grove City, OH

Building Size: 409,654 SF | 409,654 SF of Industrial Space Available

VISIT eqtgroup.com/real-estate

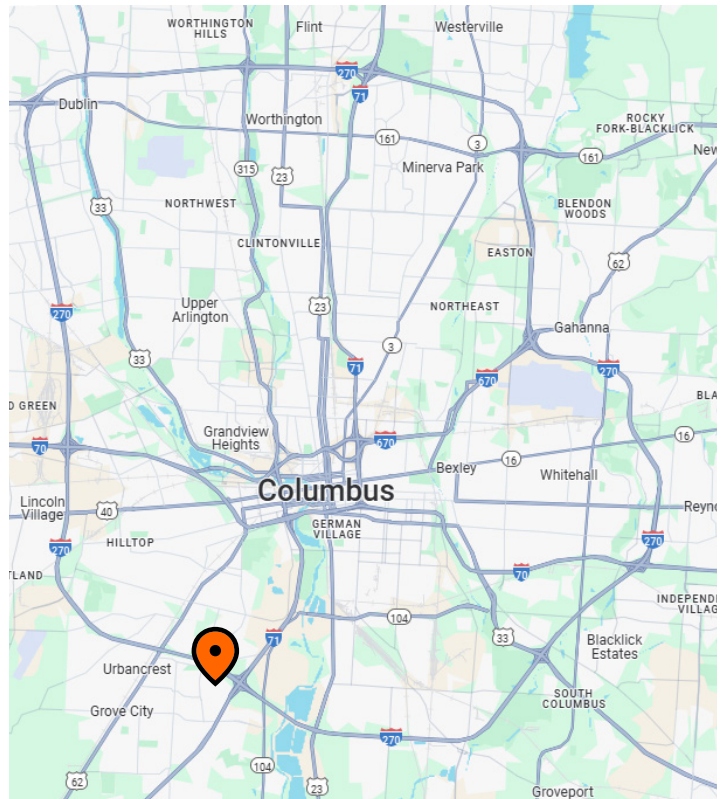
3400 Southpark Place Grove City, OH

409,654 SF of Industrial Space Available



Property Specifications

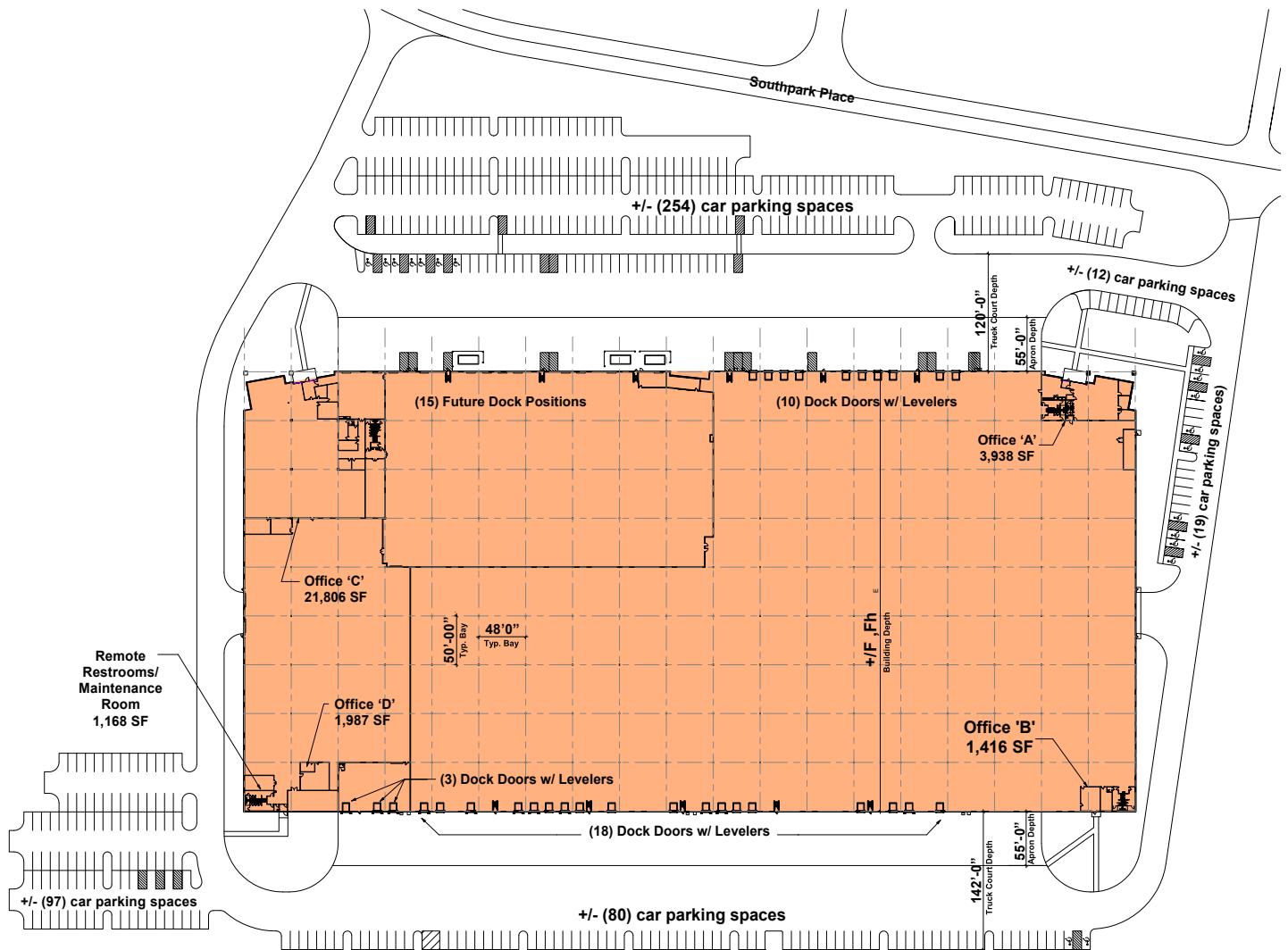
- 409,654 SF total building size
- 409,654 SF available size
- Class A warehouse
- Office A) 3,938 SF; Office B) 2,015 SF; Office C) 21,806 SF; Office D) 1,987 SF
- 28' clear ceiling height
- 48' x 50' column spacing
- 31 (9' x 10') dock doors with levelers
- LED Lighting
- Ample car parking
- 8,200 amps
- ESFR sprinkler system
- Easy access to I-71, I-270, and I-70
- Minutes from the Port Columbus International Airport
- Public transportation stop at building



Contact | Chris Simons - +1 (330) 697-9131 - chris.simons@eqtpartners.com
Aaron Schmidt - +1 (860) 713-3901 - aaron.schmidt@eqtpartners.com

3400 Southpark Place Grove City, OH

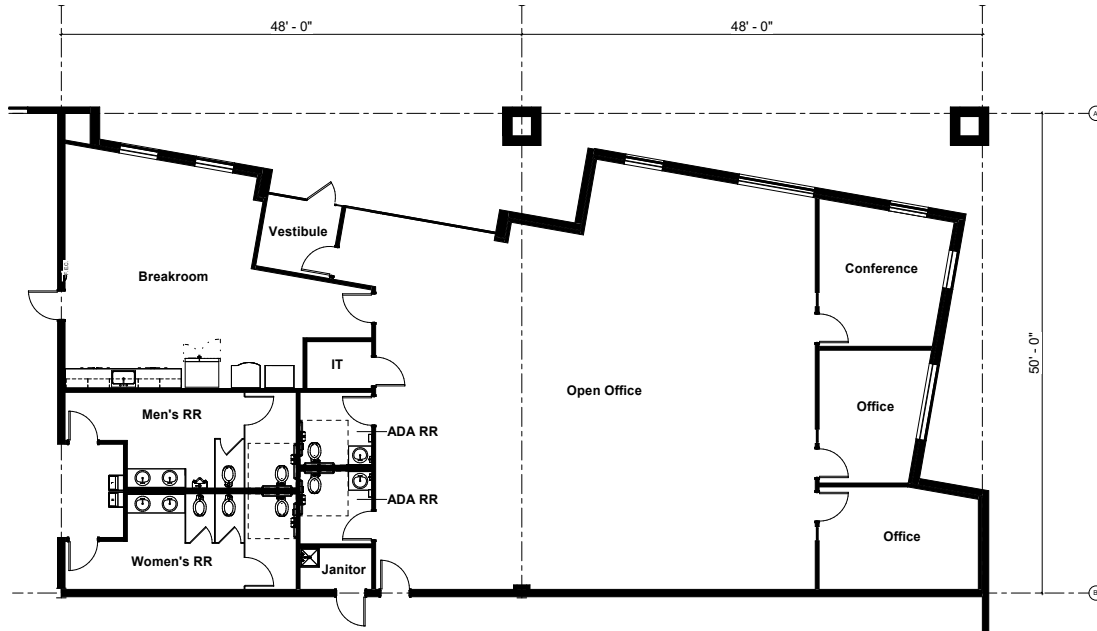
409,654 SF of Industrial Space Available



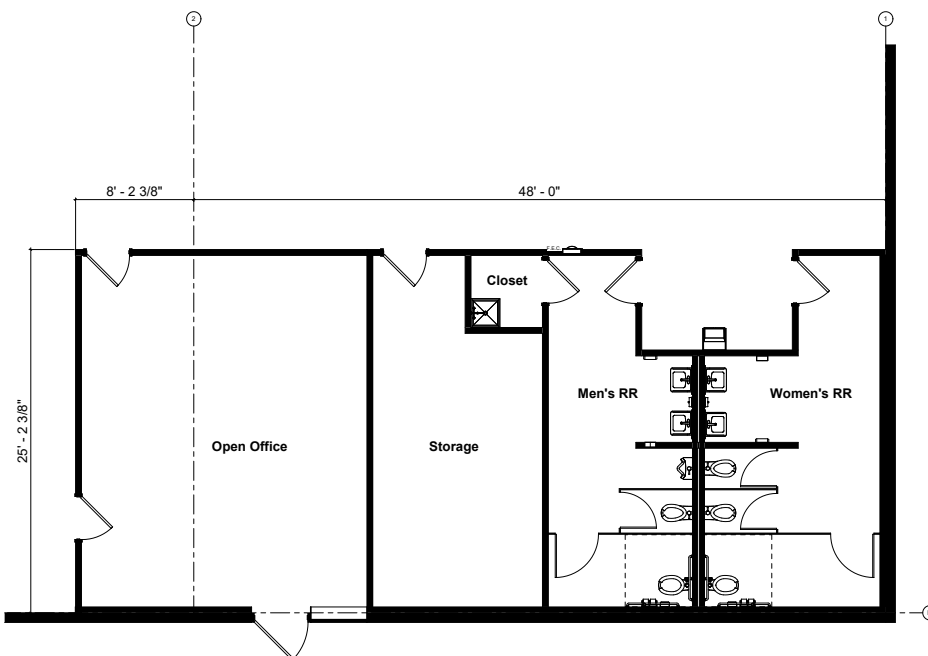
3400 Southpark Place Grove City, OH

409,654 SF of Industrial Space Available

Office A Floor Plan: 3,938 SF



Office B Floor Plan: 2,015 SF



3400 Southpark Place Grove City, OH

409,654 SF of Industrial Space Available

Office C Floor Plan: 5,368 SF

