

801 Warrenville Road

Suite 655

801 Warrenville Road, Lisle, IL 60532

HAMILTON PARTNERS  
www.hamiltonpartners.com



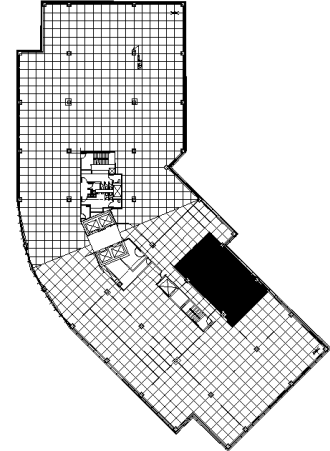
### DETAILS

**Square Feet:** 2,028 S.F.  
**Net Rent:** \$15.00/S.F.  
**OP. Expense:** \$7.96/S.F.  
**Tax:** \$2.77/S.F.  
**Gross Rent:** \$25.73/S.F.

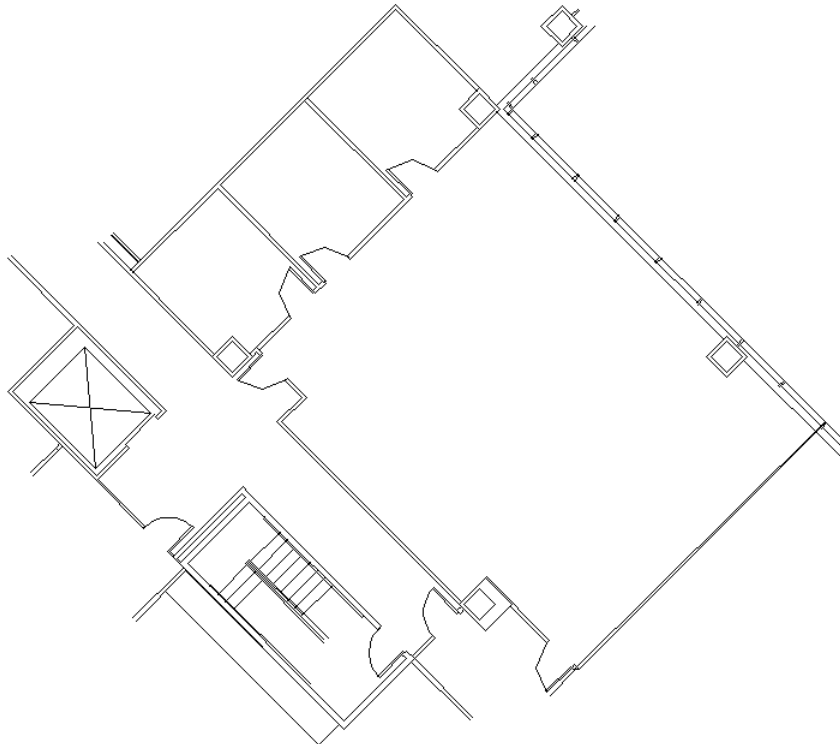
### SUITE FEATURES

- Available 4/1/2019
- Beautiful small office with incredible windowline
- 3 offices
- Large open area for workstations
- Efficient layout
- Can be combined for 3,673 RSF suite

### SIXTH FLOOR PLAN



### SPACE PLAN



### CONTACT INFORMATION

**David Andrews**

✉ [da@hpre.com](mailto:da@hpre.com)

P 630-719-5565

F 630-719-5570

**Philip Sheridan**

✉ [phil\\_sheridan@hpre.com](mailto:phil_sheridan@hpre.com)

P 630-719-5567

F 630-719-5570