

INDUSTRIAL / FLEX BUILDING FOR SUBLEASE

1195 CLOUGH PIKE

Batavia, OH 45103



Chas Cook
chas.cook@lee-associates.com
D. 513.588.1132
C. 513.884.2665

Paul Schmerge
pschmerge@lee-associates.com
D. 513.588.1107
C. 513.305.5690

LEE & ASSOCIATES
COMMERCIAL REAL ESTATE SERVICES

All information furnished regarding property for sale, rental or financing is from sources deemed reliable, but no warranty or representation is made to the accuracy thereof and same is submitted to errors, omissions, change of price, rental or other conditions prior to sale, lease or financing or withdrawal without notice. No liability of any kind is to be imposed on the broker herein.

INDUSTRIAL/FLEX BUILDING FOR SUBLEASE **1195 CLOUGH PIKE**

Batavia, OH 45103

AVAILABLE: ± 18,525 SF | 3.5 Acres

PRICING: \$9.00/SF Modified Gross

PROPERTY HIGHLIGHTS:

- Excellent visibility at the corner of Bach Buxton & Clough Pike
- ± 6,000 SF of well-maintained office space
- Fully climate-controlled building
- 2 docks & 1 drive-in
- 18'-19' clear
- 60+ parking spaces
- 120V truck charging stations in back fenced lot
- Master lease expires February 28th, 2030



INDUSTRIAL/FLEX BUILDING FOR SUBLEASE

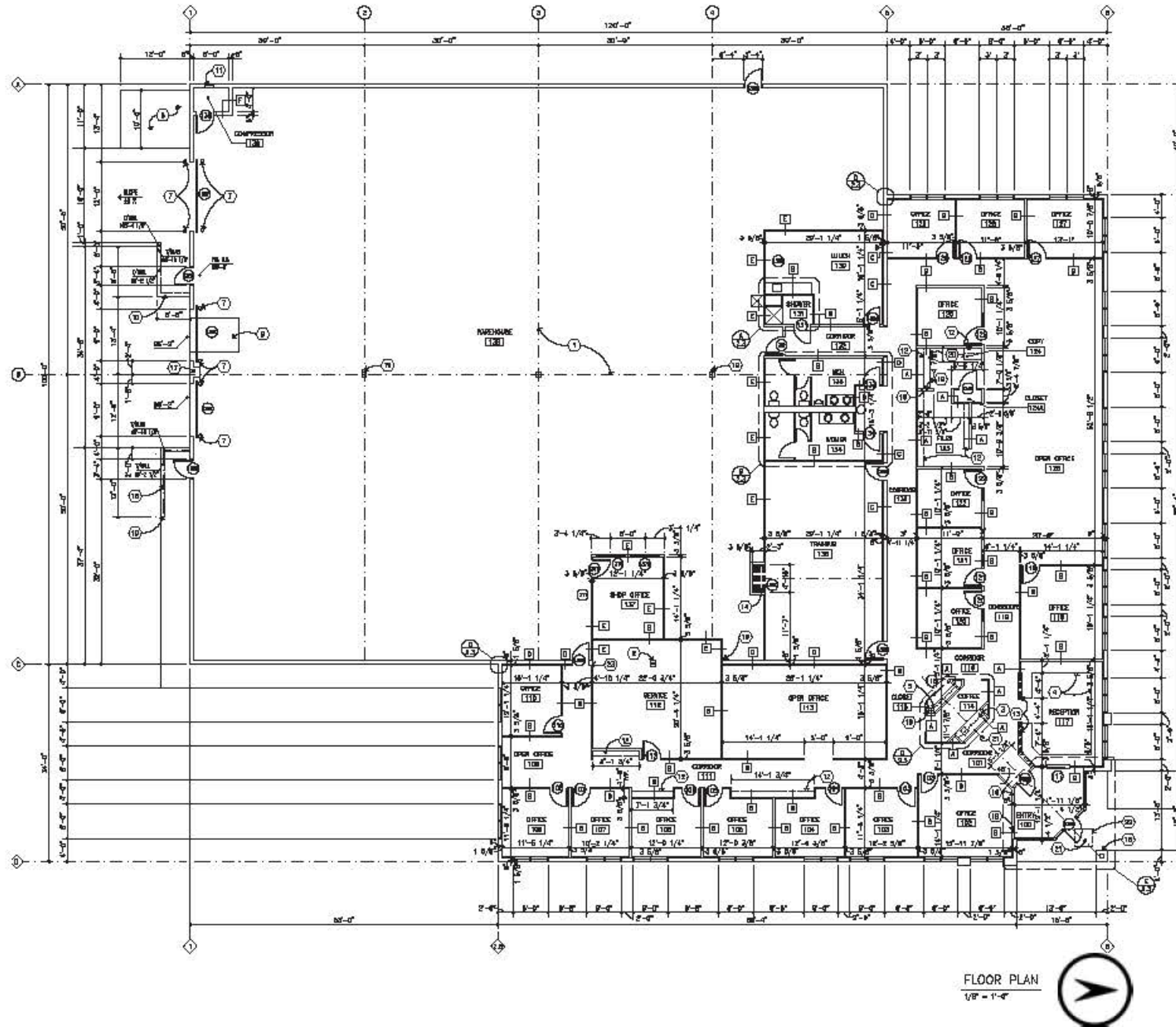
1195 CLOUGH PIKE

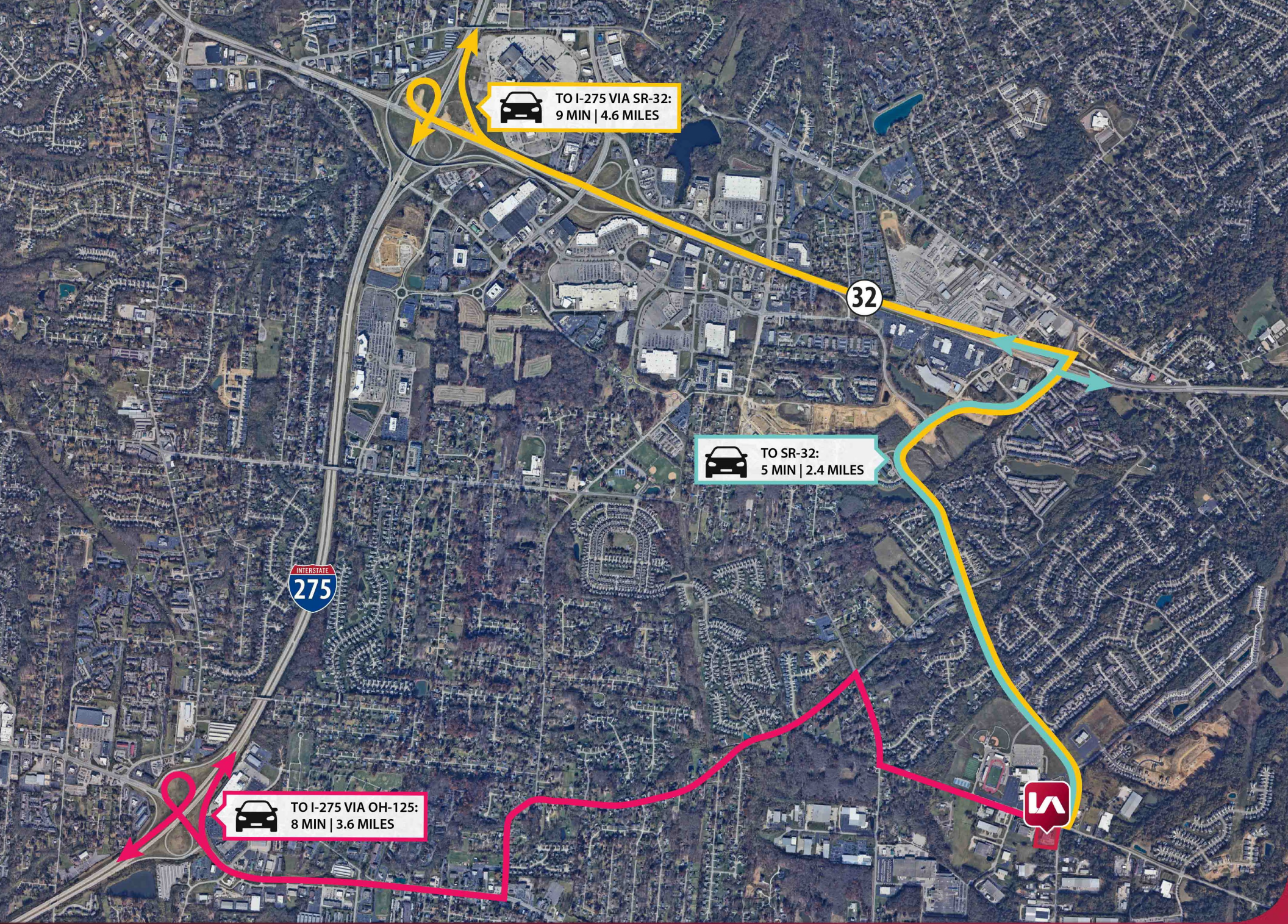
FACT SHEET


Location:	Union Township; Clermont County	Sprinklers:	Wet
Total Building Size:	± 18,525 SF	Air Conditioning:	100% HVAC
Office Size:	± 6,000 SF	Heating:	Gas unit heaters
Warehouse Size:	± 12,525 SF	Restrooms:	Men's & women's in office
Land:	3.5 Acres	Parking:	60+ Parking Spaces (Expandable)
Zoning:	M-1 (Industrial)	Lighting:	T8 Fluorescent
Access to Expressways:	3.6 Miles to I-275 2.4 Miles to SR-32	Windows:	In Office
Year Built:	1995	Outside Security Lighting & Cameras:	Yes
Construction:	Concrete Block	Electrical Service:	480V 3 Phase, 600-amps
Column Spacing:	30' x 50'	Gas & Electric:	Duke Energy
Floor:	Concrete	Water & Sewer:	Clermont County
Clear Height:	18'-19'	Auditor's Information:	413112C251
Loading Facilities:	2 Docks (1 with leveler) 1 Drive-In (12' x 14')	Available:	September 1 st , 2026
Ventilation Fans:	Air louvers, exhaust fans, and ceiling fans	Master Lease Expiration:	February 28 th , 2030
Electric Truck Charging Stations:	Yes, 120V outlets	Lease Rate:	\$9.00/SF Modified Gross


INDUSTRIAL/FLEX BUILDING FOR SUBLEASE


FLOORPLAN





 TO I-275 VIA SR-32:
9 MIN | 4.6 MILES

 TO SR-32:
5 MIN | 2.4 MILES

 TO I-275 VIA OH-125:
8 MIN | 3.6 MILES

INTERSTATE
275

32

